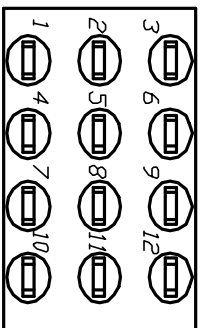
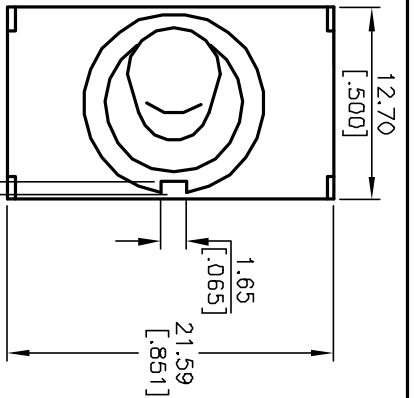


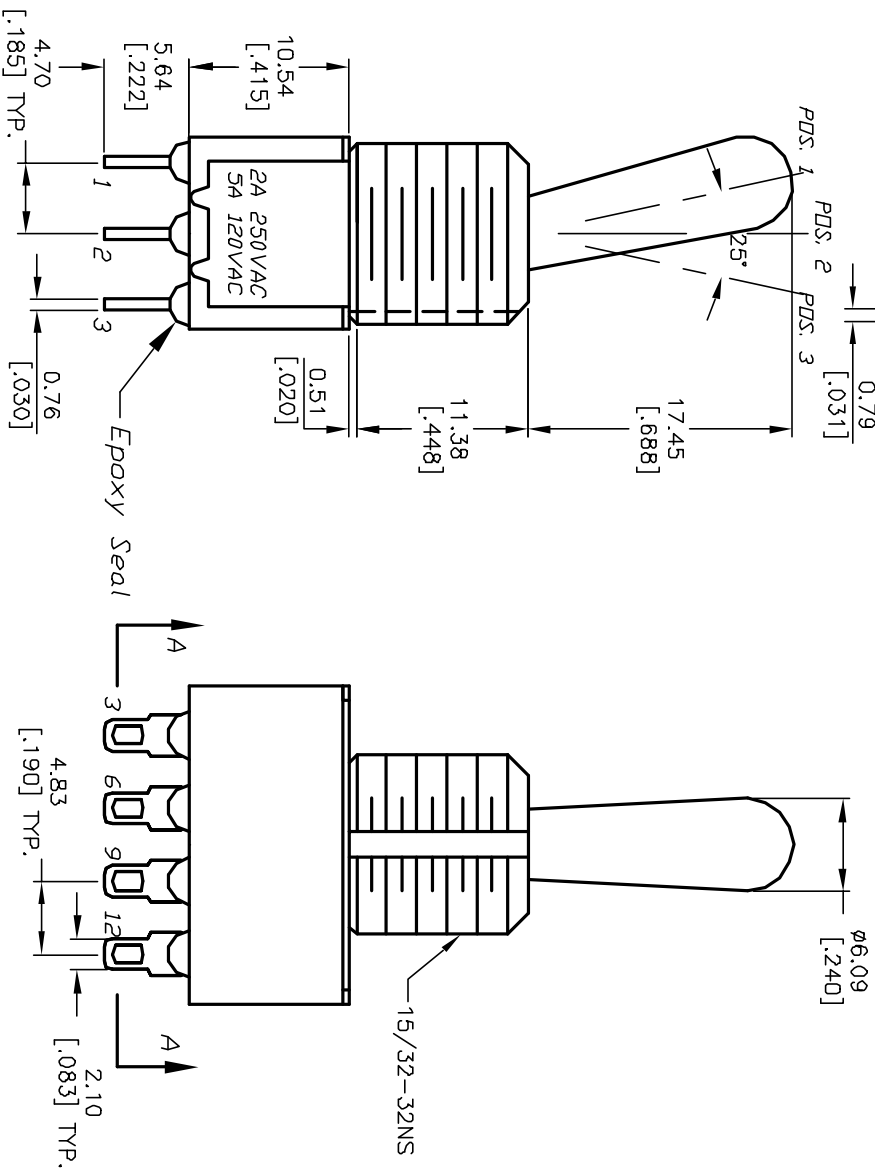
CIRCUIT: 4PDT

CONTACT CONFIGURATION

SWITCH FUNCTION		
PDS. 1	PDS. 2	PDS. 3
2-3,5-6 8-9,11-12	DPEN	2-1,5-4 8-7,11-10



VIEW A-A



NOTES:

- ALL DIMENSIONS IN MM [INCH]
- GENERAL TOLERANCE: X.X=±0.4  
X.XX=±0.25
- TERMINAL NUMBERS FOR REF ONLY
- RATING: 5A @120VACor 28VDC  
2A @250VAC. w/resistive loads
- CONTACT & TERM MATERIAL:  
Cu Alloy w/Silver plate.
- ELECTRIC LIFE: 50,000 make-and-break cycles  
at full load.
- INSULATION RESISTANCE: 1,000 Mega-ohm min.
- DIELECTRIC STRENGTH: 1,000 V RMS @sea level.
- OPERATING TEMP.: -30°C to 85°C
- ▲ DENOTES CRITICAL PARAMETER.

A	13134	RELEASED FOR PRODUCTION	5/13/03	AR
REV.	ECN No.	DESCRIPTION	DATE	CHKD

TITLE				
1004P3T8B13M1QE				
SCALE	DATE	DR	DWG	REV
2:1	5/13/03	AR	T143010	A

THE INFORMATION CONTAINED IN THIS DOCUMENT IS PROPRIETARY TO E-SWITCH AND IS NOT TO BE COPIED OR TRANSFERRED

**E-SWITCH®**