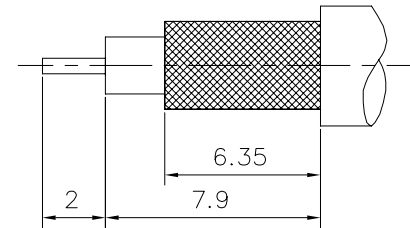
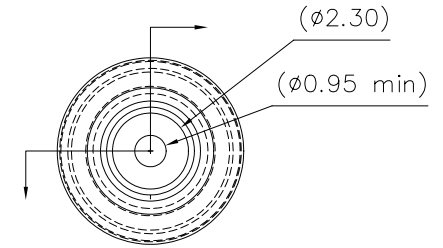
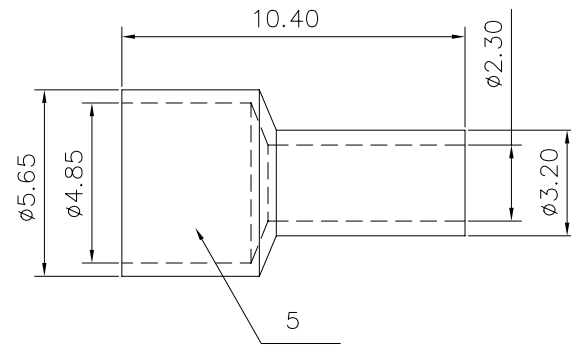
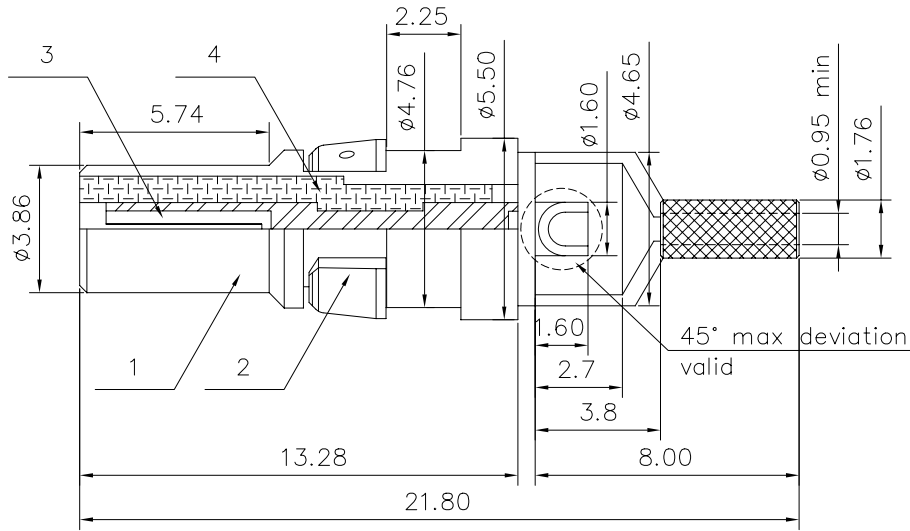


This document is the property of Amphenol Corporation and is delivered on the express condition that it is not to be disclosed, reproduced or used, in whole or in part, for manufacture or sale by anyone other than Amphenol Corporation without its prior consent, & that no right is granted to disclose or to use any information in this document.

REVISIONS				
SYM	ECN	DESCRIPTION	DATE	APPROVED
1			10/20/08	



Trim cable

MECHANICAL

- 1. Materials: refer to the table
- 2. Finish: refer to the table
- 3. Center contact:

Insertion force: 340g max with $\phi 1.04$ plug
 Withdrawal force: 14g min with $\phi 0.99$ plug

ELECTRICAL :

Impedance: 50 Ohms Nominal
 Frequency Range: 0 to 2.0 GHz
 Insulation Resistance: 5000 Megaohms Minimum
 Contact Resistance: (Milliohms maximum)
 Center Contact: 5.0
 Outer Contact: 3.0
 Voltage Standing Wave Ratio: 0 to 2.0 GHz

ENVIRONMENTAL

Operating Temperature range : -55°C up to $+125^{\circ}\text{C}$
 Vibration: MIL-STD-202, Method 204, Test Condition D
 Shock: MIL-STD-202, Method 213, Test Condition I
 Corrosion Resistance: MIL-STD-202, Method 101, Test Condition B



5	ferrule	brass, 4u" min. gold over 50u" min. nickel
4	insulator	PTFE, Color white
3	center contact	phosphor bronze, 30u" min. gold over 50u" min. nickel
2	ring	thermoplastic, Color black
1	outer contact	brass, 8u" min. gold over 50u" min. nickel
Sequence	Material	Remark

UNLESS OTHERWISE SPECIFIED TOLERANCES		APPROVAL	DATE	Amphenol®	
U.S. METRIC		DRAWN	Mary.ma		
.X +/-	0.15	CHECKED	lik.wang		
.XX +/-	0.10	CHECKED			
.XXX +/-	0.05			TITLE	
FRACTIONS +/-	2'	DRAWING FILE :		Straight shielded contacts Crimp ferrule	
ANGLES +/-				SIZE	
FOR MATERIALS AND FINISHES SEE NOTES				DRAWING NO.	
REMOVE SHARP EDGES		ANGLE OF PROJECTION		REV.	
DIMENSIONS				A4	
U.S. INCHES				C	L17DM53740
METRIC MM				SCALE	NONE
				SHEET 1 OF 1	