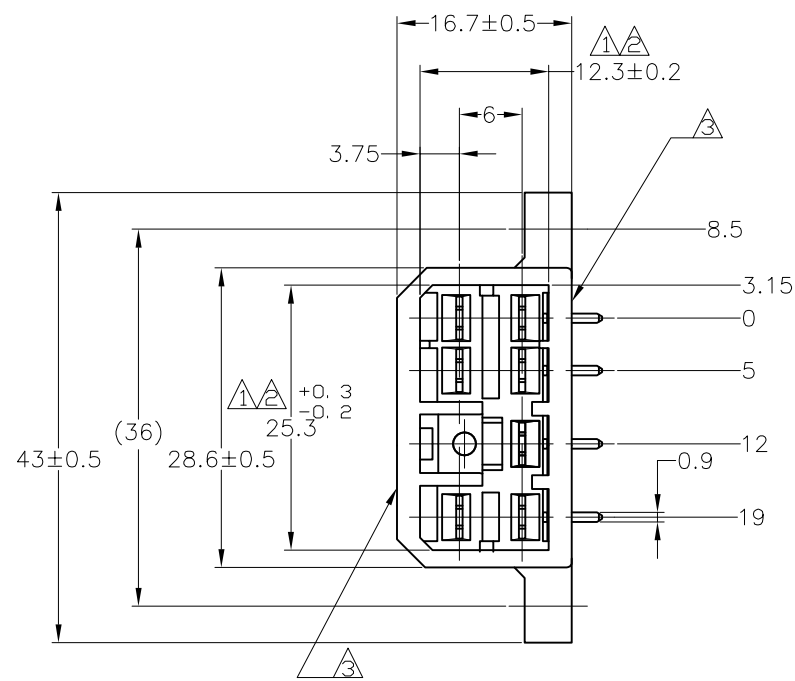
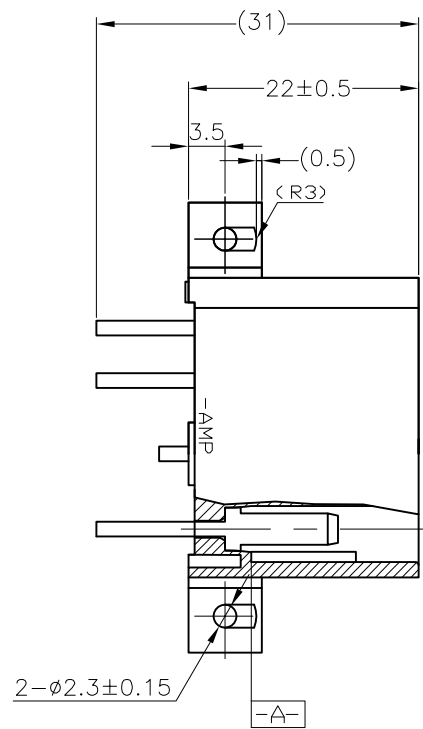


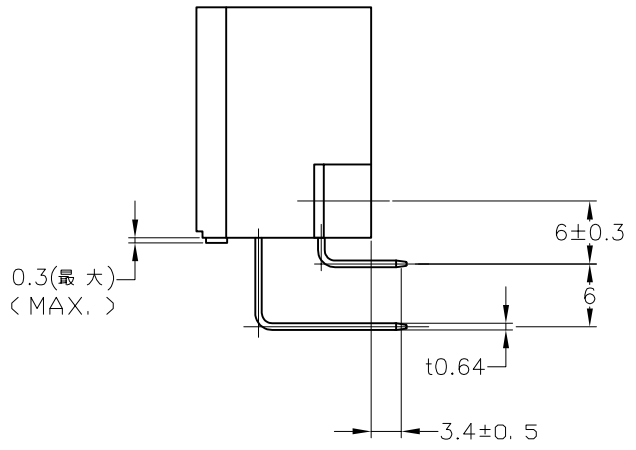
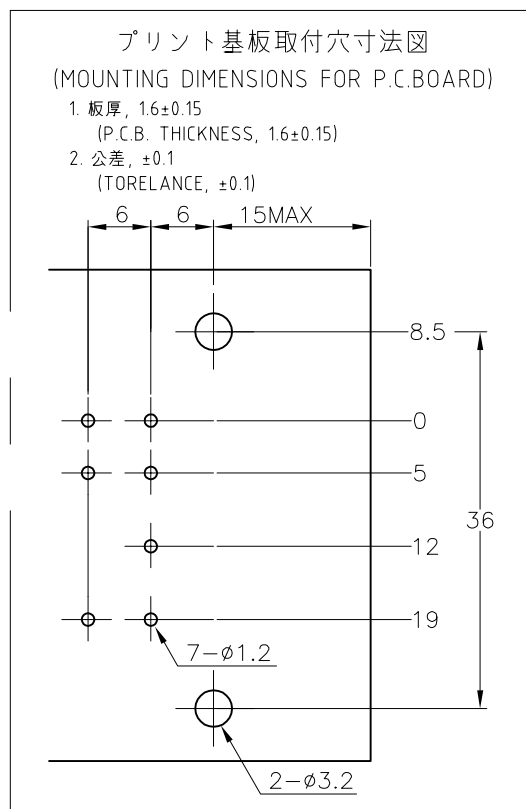
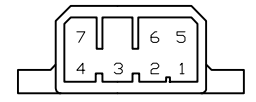
THIS DRAWING IS UNPUBLISHED. RELEASED FOR PUBLICATION  
 © COPYRIGHT - By - ALL RIGHTS RESERVED.

LOC		DIST		REVISIONS			
J		-		REV	DESCRIPTION	DATE	BY
				E6	REVISED	31AUG07	TS
				ECR-16-000439			KB



- 注記:
- A- 面より2mmの範囲で測定のこと。
  - 相手ハウジングと所定の機能を満たしてかん合できること。
  - フードの反りは0.2以内。
  - 4 推奨取付けねじ: JIS B 1115 又は、1122 タッピンねじ  
なべ1種又は2種、呼び径3長さ6mm以下。  
(締め付けトルク: 0.4N・m 以下)
  - 5 適用製品規格 No.108-5093
  - 6 相手ハウジングとのかん合力は、29.4N以下  
但し、リセプタクルコンタクトは含まない。
  - △ タブなしタイプ(表参照)回路番号下図参照のこと。

- NOTES:
- △ TO BE MEASURED WITHIN 2mm FROM -A-
  - △ IN COUPLING WITH THE PLUG HOUSING MATING SATISFIES FUNCTION
  - △ WARPAGE 0.2 MAX.
  - 4 RECOMMENDED MOUNTING SCREW; 3mmDIA, 6mmLENGTH<MAX.> PAN HEAD, CLASS 1 AND 2 TAPPING SCREW SPECIFIED IN JIS B1115, B1122 <TIGHTENING TORQUE 0.4N・m MAX.>
  - 5 SPEC. No. 108-5093
  - 6 IN COUPLING WITH THE PLUG HOUSING MATING FORCE 29.4N MAX WITHOUT RECEPTACLE CONTACT
  - △ NON TAB CONTACT'S TYPE <SEE TABLE>
  - CIRCUIT NUMBER



		SELECTIVE-TIN (MATTE)	SELECTIVE GOLD (0.38μm MIN.)	NATURAL	2-5172039-1
		SELECTIVE-TIN (MATTE)	SELECTIVE GOLD (0.76μm MIN.)	NATURAL	1-5172039-1
OBSOLETE	12.6		PRE-TIN	NATURAL	4-172039-1
OBSOLETE	2.6		PRE-TIN	NATURAL	3-172039-1
OBSOLETE		TIN-LEAD	SELECTIVE GOLD (0.38μm MIN.)	GREEN	2-172039-4
OBSOLETE		TIN-LEAD	SELECTIVE GOLD (0.38μm MIN.)	NATURAL	2-172039-1
OBSOLETE		TIN-LEAD	SELECTIVE GOLD (0.76μm MIN.)	GREEN	1-172039-4
OBSOLETE		TIN-LEAD	SELECTIVE GOLD (0.76μm MIN.)	NATURAL	1-172039-1
OBSOLETE			PRE-TIN	YELLOW	172039-7
OBSOLETE			PRE-TIN	GRAY	172039-6
OBSOLETE			PRE-TIN	BLUE	172039-5
			PRE-TIN	GREEN	172039-4
OBSOLETE			PRE-TIN	BROWN	172039-3
			PRE-TIN	BLACK	172039-2
			PRE-TIN	NATURAL	172039-1
△ NON TAB PLACES タブなし箇所		SOLDERING SIDE 半田付け部	CONTACT SIDE 接触部側	COLOR 色	PART NUMBER 製品型番
		CONTACT FINISH コンタクト仕上			

THIS DRAWING IS A CONTROLLED DOCUMENT.

DWN: T.SHINOHARA 31AUG07  
 CHK: K.BETSUI 31AUG07  
 APVD: K.BETSUI 31AUG07

TE Connectivity

7P HORIZONTAL TYPE CAP HOUSING ASS'Y  
 MULTI-INTERLOCK CONN. (WIRE TO P.C.B.)

SIZE: A2 CAGE CODE: 00779 DRAWING NO: 172039

SCALE: 2:1 SHEET: 1 of 1 REV: E6

MATERIAL: HSG: 66 NYLON CONTACT: BRASS

TOLERANCE UNLESS OTHERWISE SPECIFIED: 一般公差

0 ≤ x ≤ 10 : ±0.2  
 10 ≤ x ≤ 30 : ±0.25  
 30 ≤ x ≤ 100 : ±0.3  
 ANGLE 角度 : ±3°

FINISH 仕上: SEE TABLE

PRODUCT SPEC: 製品規格  
 APPLICATION SPEC: 取付適用規格

SEE NOTE 5