

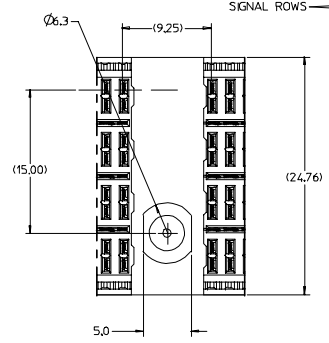
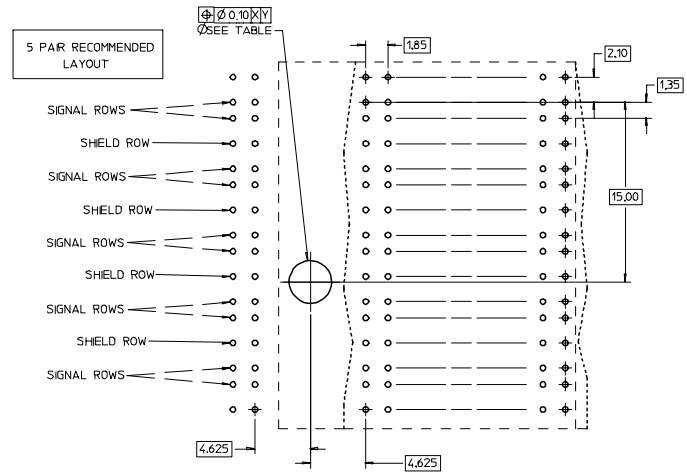
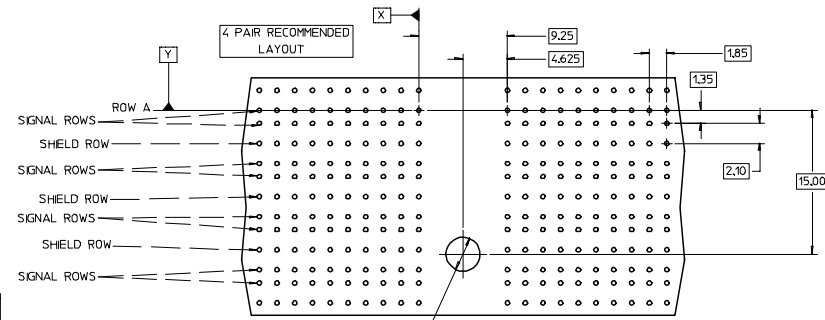
- NOTES:  
 1. REFER TO BACKPLANE SALES DRAWINGS FOR ROW AND COLUMN ASSIGNMENTS.  
 2. INSTALLATION TORQUE SPECIFICATIONS = 2.5 - 3.0 IN-LBS.  
 3. PLATED THRU HOLE TO CONNECT TO CHASSIS FOR GROUNDED GUIDE MODULE OPTION.  
 4. REFER TO PS-75221-999 FOR GBX PRODUCT SPECIFICATION.  
 5. 4-PAIR CONNECTORS SHOWN FOR ILLUSTRATION ONLY.

TABLE #1 - HOLE SPECIFICATIONS

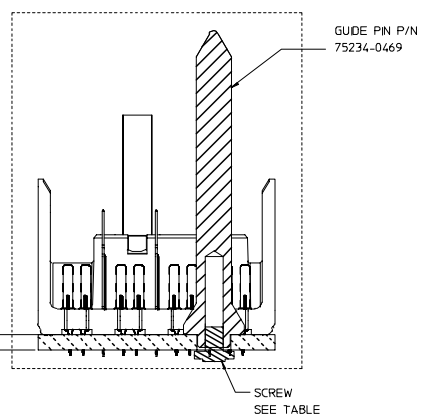
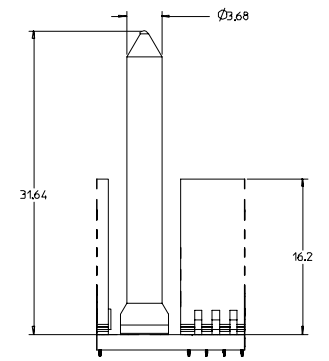
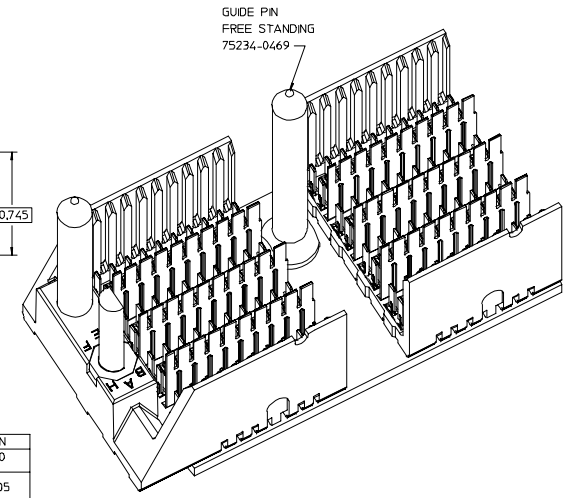
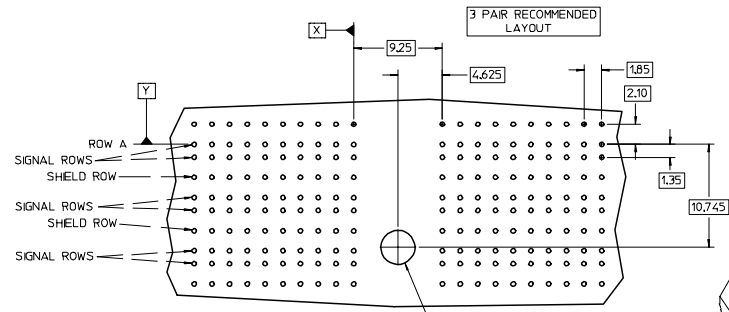
FINISHED HOLE SIZE	GROUNDING	UNGROUNDING
	Ø3.48-3.63	Ø3.48-3.63
PAD	Ø 6.5	N/A
PLATED	YES	NO
DRILL (mm)	3.66mm	----
DRILL (IN)	0.144"	----

TABLE #2 - SCREW SPECIFICATIONS

SCREW P/N	DESCRIPTION	BOARD THICKNESS
73774-1000	#2-56 x 0.375" LONG SQUARE CONICAL MACHINE SCREW	1.6-5.0 mm
73774-1005	#2-56 x 0.500" LONG SQUARE CONICAL MACHINE SCREW	5.0-8.0 mm
73774-1010	#2-56 x 0.625" LONG SQUARE CONICAL MACHINE SCREW	8.0-10.0 mm



PRE-RELEASED  
 PENDING CUSTOMER APPROVAL  
 2007/10/17



KIT P/N	BOARD THICKNESS	GUIDE PIN P/N	SCREW P/N
75234-1469	1.6 - 5.0mm	75234-0469	73774-1000
75234-2469	5.0-8.0 mm	75234-0469	73774-1005
75234-3469	8.0-10.0 mm	75234-0469	73774-1010

REVISED (IN/OR) EC NO: UCP2008-0890 DRWN: BINGHAM 2007/11/15 CHKD: 2007/11/16 APPR: JLAURX 2007/11/16 REV DESCRIPTION	QUALITY SYMBOLS	GENERAL TOLERANCES (UNLESS SPECIFIED)	SCALE 4:1	DESIGN UNITS METRIC	THIRD ANGLE PROJECTION	REVISE ON CAD ONLY
	0.0	4 PLACES ± --- ± --- 3 PLACES ± --- ± --- 2 PLACES ± 0.13 ± --- 1 PLACE ± 0.25 ± --- ANGULAR ± --- °	mm INCH	DIMENSION STYLE MM ONLY	TITLE	GBX BACKPLANE FREE STANDING GUIDE PIN BOARD LAYOUT DRAWING
B1	DRAFT WHERE APPLICABLE MUST REMAIN WITHIN DIMENSIONS	APPROVED BY SREED 2004/01/15	DRAWN BY NMARTIN 2004/01/15	CHECKED BY JLAURX 2004/01/15	MATERIAL NO. SEE CHART	DOCUMENT NO. SD-75234-100
THIS DRAWING CONTAINS INFORMATION THAT IS PROPRIETARY TO MOLEX INCORPORATED AND SHOULD NOT BE USED WITHOUT WRITTEN PERMISSION			SHEET NO. 1 OF 1		MOLEX INCORPORATED	