



CONCEALED HINGE



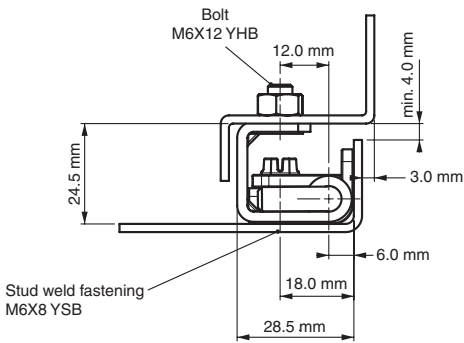
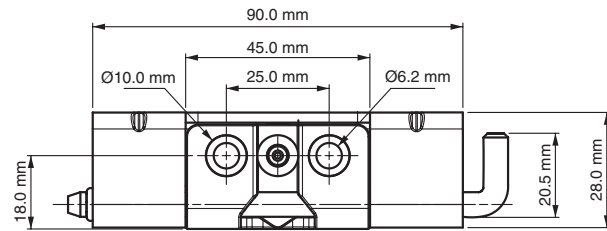
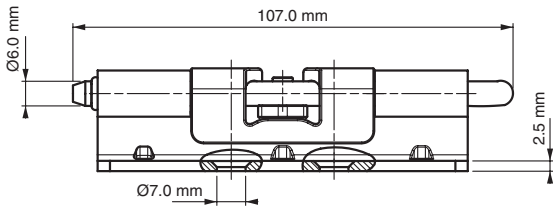
Specifications

- Material:
 - Body: Steel
 - Welding Part: Zinc Alloy (Zamak) DIN-EN 1774-ZnAl4Cu1
- Finish:
 - Body: Zinc plated
 - Welding Part: Zinc plated

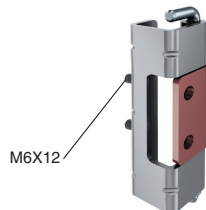
Features

- Suitable for heavy-duty applications
- Suitable for Left- and right-hand applications
- Suitable for 25 mm bend door enclosures
- Door part can be removed
- Applications: Electric panels, machinery covers

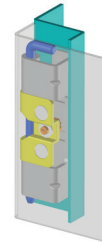
Version 2



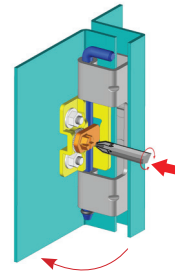
Stud version



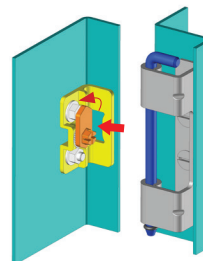
Position 1 - Closed door



Position 2 - After the door is opened, cam is rotated 90° with a screwdriver



Position 3 - The cover is removed



Hinge Rotation Angle



Note: Nuts are not supplied

Item Number	Hinge Rotation	Material	Finish	Version	Stud
9956320	110°	Steel	Zinc	2	No
9956321	110°	Steel	Zinc	2	Yes