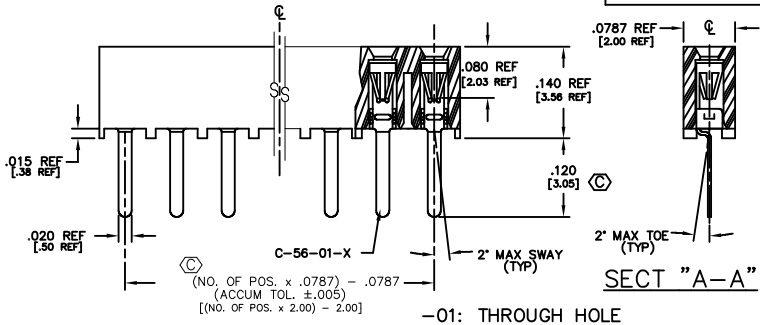
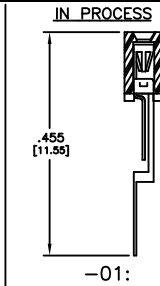
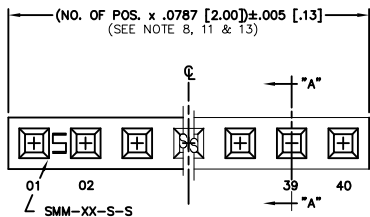


REVISION BG

DO NOT SCALE FROM THIS PRINT



* PINS INTERLEAVED AND ORIENTED SAME DIRECTION FOR -01 ONLY

NOTES:

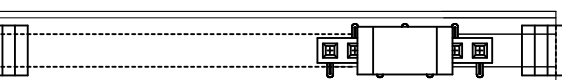
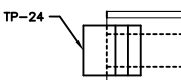
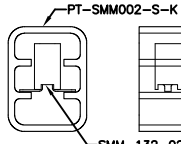
- RETENTION FORCE IN BODY TO BE: 1 lbs. MIN
- INSERTION FORCE TO BE: 3.0 oz. MAX.
- WITHDRAWAL FORCE TO BE: 0.4 oz. MIN.
- ⊙ REPRESENTS CRITICAL DIMS. FOR STATISTICAL PROCESS CONTROL.
- [] DIMS ARE IN METRIC AND ARE NOT CONTROLLING DIMS.
- SMM-105-01-X THRU SMM-140-01-X MUST USE PT-1-24-01-12.
- LC- OPTION FOR A 02 POSITION WILL HAVE ONLY ONE LOCKING CLIP (LC-05-T).
- "END WALLS" AFTER CUTTING SHOULD BE .017±.005.
- ALL OPTIONS: PACKAGE POSITIONS -04 THRU -40 IN TUBES. LAYER PACKAGE POSITIONS -02 & -03 WITH NO OPTIONS.
- 02 THRU -05 POSITION WITH -K OR -P TO BE PACKAGED IN -TR ONLY. -06 THRU -40 POSITION AVAILABLE IN TUBE OR -TR PACKAGING.
- MAX CUT FLASH: .010[.25]
- DUE TO THE HIGH AMOUNT OF INSERTION FORCE NEEDED, THE -LC OPTION IS NOT COMPATIBLE WITH AUTO PLACEMENT. SAMTEC RECOMMENDS MANUAL PLACEMENT FOR ALL ASSEMBLIES WITH THE -LC OPTION.
- FOR -02 LEAD STYLE: EVEN CUTS: LOSE 2 POSITIONS PER CUT; ODD CUTS: LOSE 1 POSITION PER CUT.
- INSULATOR MATERIAL: BLACK, LCP, UL 94 V0
- MAXIMUM PIN HEIGHT VARIATION: .003[.08] FROM ROW TO ROW AND PIN TO PIN, MUST BE MEASURED BETWEEN ADJACENT PINS.

DIMENSIONS ARE IN INCHES UNLESS OTHERWISE NOTED		TOLERANCES ARE:	
ONE PLACE DECIMALS: ± .1	THREE PLACE DECIMALS: ± .005	ANGLES	± 1°
TWO PLACE DECIMALS: ± .01	FOUR PLACE DECIMALS: ± .0020		

TITLE: 2 mm SOCKET STRIP (SINGLE ROW)
 DWG NO: SMM-1XX-XX-XX-S-XX-X-XX-XX
 SHEET 1 OF 1

SMM-1XX-XX-XX-S-XX-X-XX-XX

- NO. OF POS. PER ROW THROUGH HOLE -01 THRU -40 SURFACE MOUNT -02 THRU -40
- LEAD STYLE
 -01: THROUGH HOLE (C-56-01-X)
 -02: SURFACE MOUNT (C-56-02-X) (SEE NOTE 13)
- PLATING OPTION
 -S: 30μ" SELECTIVE GOLD IN CONTACT AREA, MATTE TIN ON TAIL.
 -F: 3μ" FLASH SELECTIVE GOLD IN CONTACT AREA, MATTE TIN ON TAIL.
 -H: 30μ" HEAVY GOLD IN CONTACT AREA, 3μ" GOLD ON TAIL.
 -L: 10μ" LIGHT SELECTIVE GOLD, IN CONTACT AREA, MATTE TIN TAIL.
 -SM: 30μ" SELECTIVE GOLD IN CONTACT AREA, MATTE TIN TAIL.
 -FM: 3μ" FLASH SELECTIVE GOLD IN CONTACT AREA, MATTE TIN TAIL.
- POLARIZING OPTION INDICATE POSITION (USE PK-07-N)
 -TR: TAPE & REEL MAX. POSITIONS AVAILABLE: 27 VERTICAL / 28 HORIZONTAL
- OPTION -P: PICK & PLACE PAD (USE PPP-09)
 -K: POLYIMIDE FILM PAD (.005 [1.13] THICKNESS) [2 POS MIN, SEE NOTE 10] (USE K-DOT-118-219-005)
- OPTION -LC: LOCKING CLIP USE 2 LC-05-TM (AVAILABLE ONLY WITH LEAD STYLE -02. SEE * DIMS) (SEE NOTES 7 & 12)
- ROW OPTION -S: SINGLE ROW (USE SMM-XX-S-S)

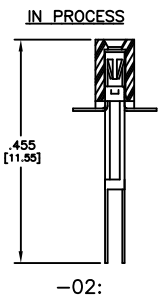
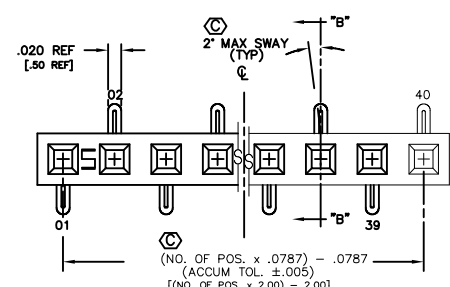
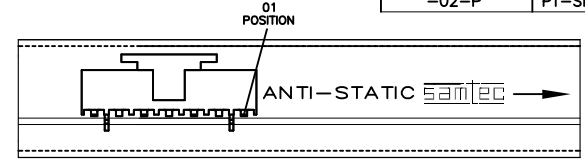
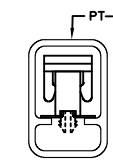
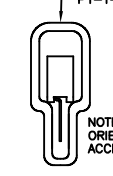


TUBE PACKAGING TABLE

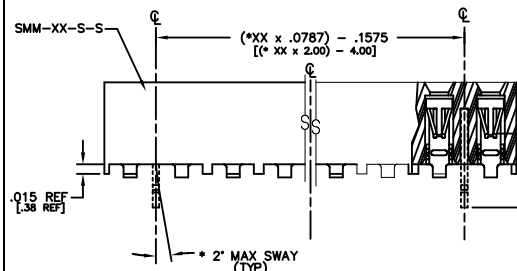
LEAD STYLE	TUBE	PLUG
-01	PT-1-24-01-12	TP-12
-01-P	PT-1-24-02-29	TP-24
-02		
-02-K, -02-LC, -02-LC-K	PT-SMM002-S-K	TP-24-02
-02-P	PT-SMM001-S-P	TP-24

PACKAGE PARTS IN TUBE AS SHOWN

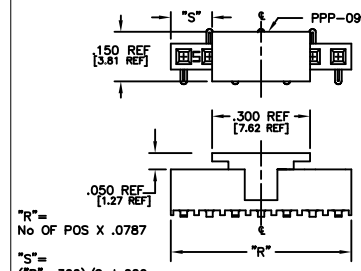
(POSITION PARTS WITH POS. -01 TOWARD ARROW AS SHOWN)



NOTE: MIXED PIN ORIENTATION ACCEPTABLE



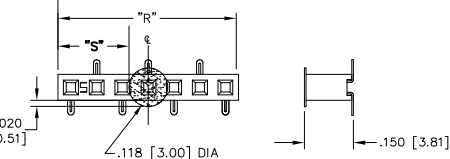
-02: SURFACE MOUNT



"R" = NO OF POS X .0787
 "S" = (R - .300) / 2 ± 0.20

-P: PICK AND PLACE PAD (PLACE PPP-09 ABOUT C.L. AS SHOWN)

-K: POLYIMIDE FILM PAD [2 POSITION MINIMUM, SEE NOTE 10]



NOTE:
 "R" = USED MEASURED DIMENSION (REF)
 "S" =
 ("R" - .118 [3.0]) / 2 ± 0.20 [51]

PROPRIETARY NOTE
 THE INFORMATION CONTAINED HEREIN IS THE PROPERTY OF SAMTEC CORPORATION AND IS NOT TO BE REPRODUCED OR TRANSMITTED IN ANY FORM OR BY ANY MEANS, ELECTRONIC OR MECHANICAL, INCLUDING PHOTOCOPYING, RECORDING, OR BY ANY INFORMATION STORAGE AND RETRIEVAL SYSTEM, WITHOUT THE WRITTEN PERMISSION OF SAMTEC CORPORATION.

520 PARK EAST BLVD., NEW ALBANY, INDIANA 47150
 PHONE (812) 944-6733 P.O. BOX 1147
 CODE 55322
 MADE BY: MATT KOLB S-22-81
 CHECKED BY: MCCARTIN
 DEM
 SMM-1XX-XX-XX-S-XX-X-XX-XX
 SHEET 1 OF 1

1/2 SCALE