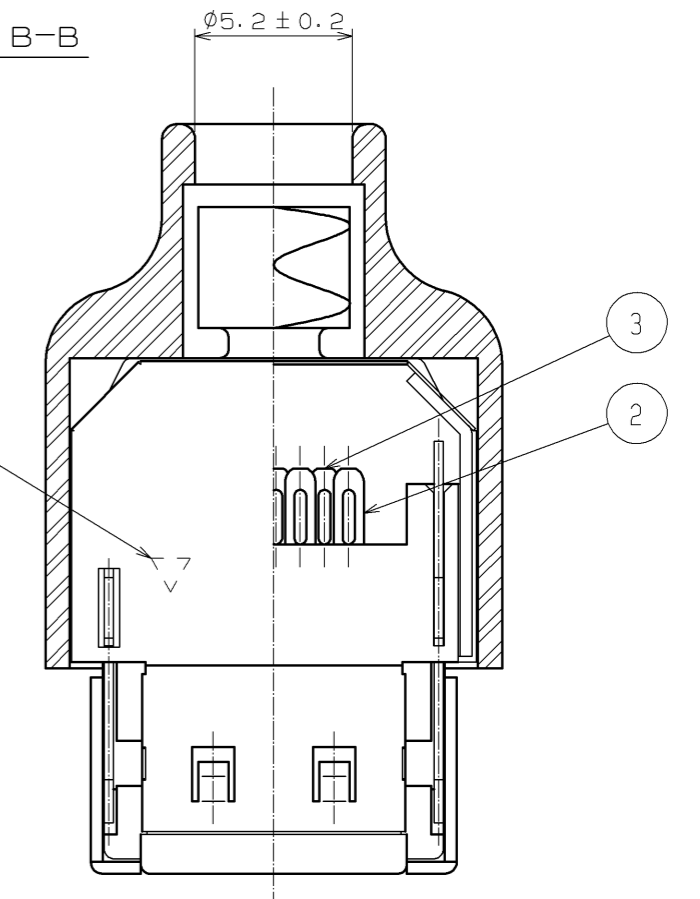
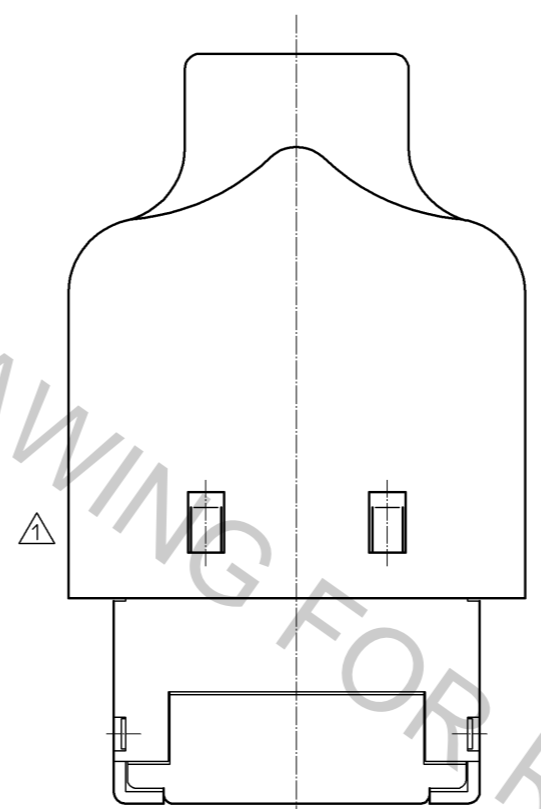
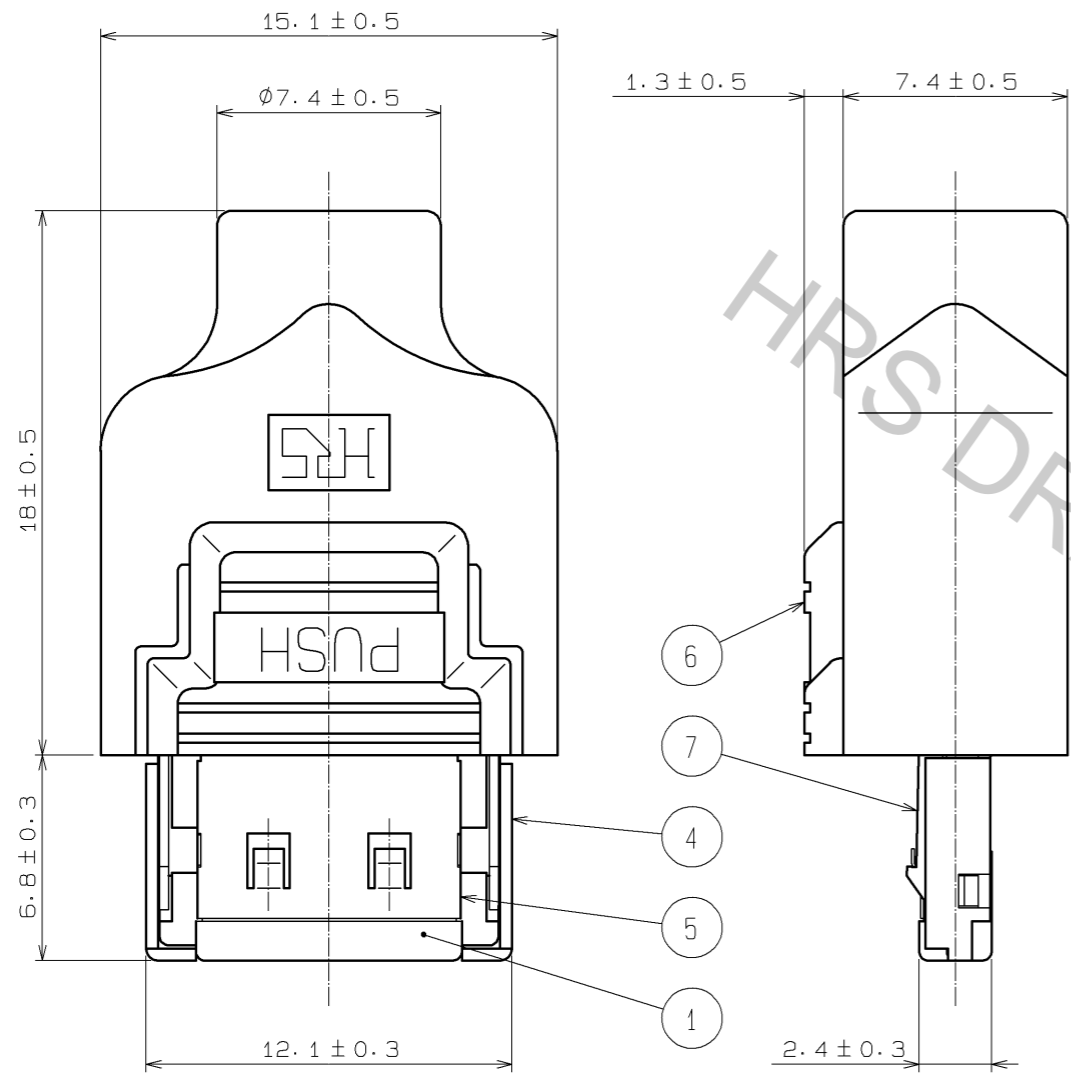
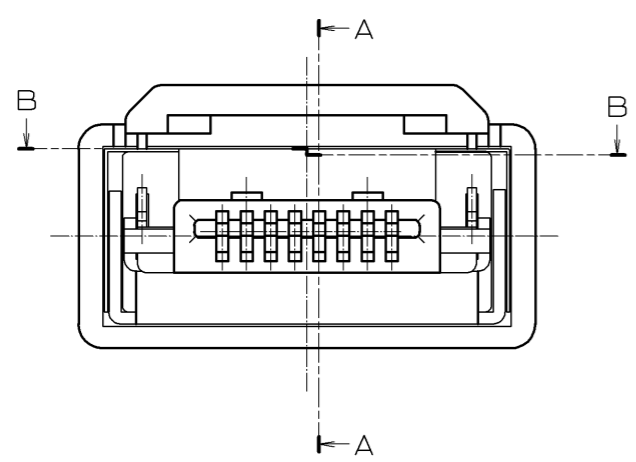
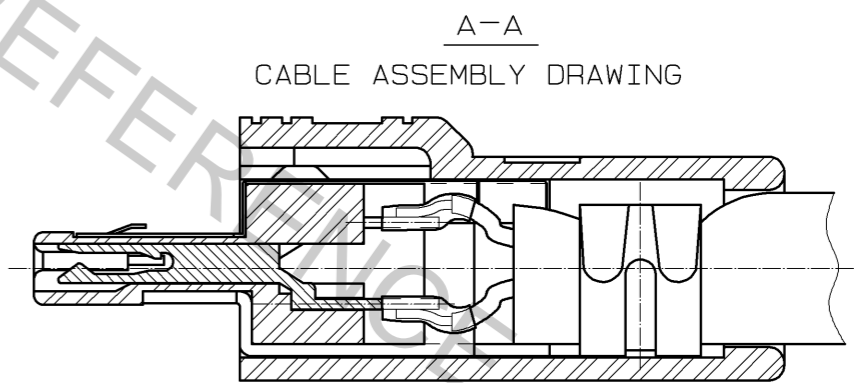


May.1.2017 Copyright 2017 HIROSE ELECTRIC CO., LTD. All Rights Reserved.



POLARIZATION
-MARK
(POLARIZATION MARK
SHALL BE PROCESSED
BY CHAMFERING.)



NOTE 1. THE REFERENCE NO. ④, ⑤ AND ⑥ SHALL BE ATTACHED.

NO.	MATERIAL	FINISH . REMARKS	NO.	MATERIAL	FINISH . REMARKS
3	COPPER ALLOY	CONTACT AREA:GOLD PLATING 0.2μm min. LEAD AREA:GOLD PLATING 0.03μm min. [△]	7	STAINLESS STEEL	
2	COPPER ALLOY	UNDER PLATING:NICKEL PLATING 2μm min.	6	POLYCARBONATE	BLACK·UL94HB
1	PPS	BLACK·UL94V-0	5	PHOSPHOR BRONZE	NICKEL PLATING 1μm min. [△]
			4	BRASS	NICKEL PLATING 1μm min. [△]

UNITS	SCALE	COUNT	DESCRIPTION OF REVISIONS	DESIGNED	CHECKED	DATE
mm	4 : 1	4	DIS-E-003308	TS. ITO	TA. ASO	10.06.14

APPROVED : A0. SUZUKI	06.05.22	DRAWING NO.	EDC3-045931-03
CHECKED : NF. MIYAZAKI	06.05.22	PART NO.	3240-8P-C(50)
DESIGNED : HS. KIKUCHI	06.05.22	CODE NO.	CL232-0001-4-50
DRAWN : HS. KIKUCHI	06.05.22		