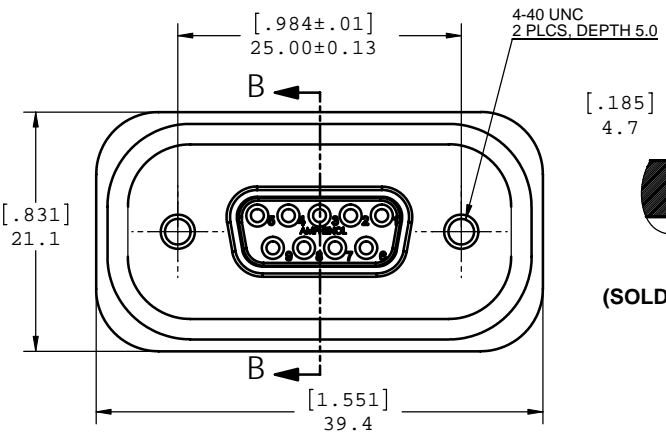
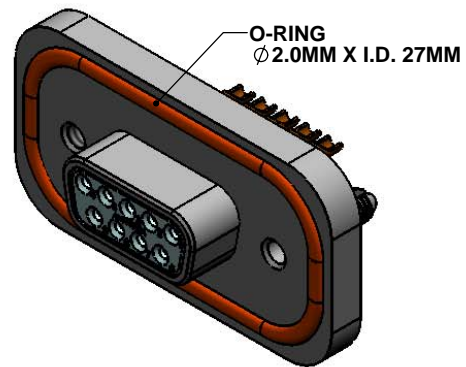
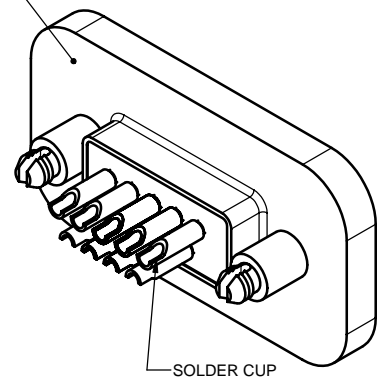
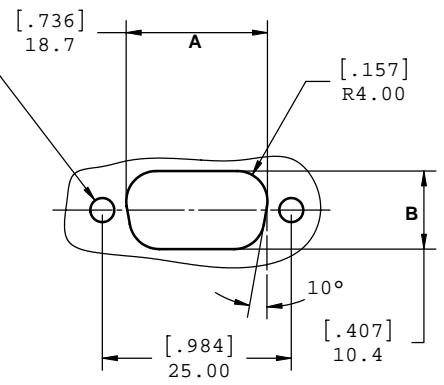
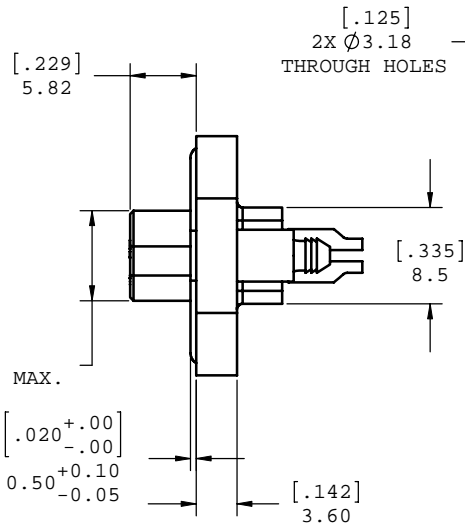


METAL DIE CAST OUTER SHELL



SECTION B-B
 SCALE 8:1
 (SOLDER CUP SHOWN)



RECOMMENDED PANEL CUT-OUT

* DIMENSIONS SHOWN ON A,B ARE ENLARGED FOR CLEARANCE FOR MATING PIN CONNECTOR.

- NOTES:
- MATERIAL:
 - SHELL: ZINC ALLOY 50 MICRO INCH MINIMUM NICKEL PLATING.
 - CONTACTS: COPPER ALLOY, 30 MICRO INCH GOLD OVER 50 MICRO INCH NICKEL PLATING.
 - INSULATOR: THERMOPLASTIC RESIN, UL94V-0 FLAMMABILITY RATING.
 - GASKETS: SILICONE RUBBER, 70 DUROMETER.
 - SEALING COMPOUND: POTTING EPOXY
 - FEATURES: SEALED CONNECTOR IN THE MATED AND UNMATED CONDITIONS.
 - OPERATING TEMPERATURE: -40°C TO +85°C.
 - ENVIRONMENT PERFORMANCE: IP67.
 - PART IS RoHS COMPLIANT.



UNLESS OTHERWISE SPECIFIED DIMENSIONS ARE IN MILLIMETER TOLERANCES ARE:		APPROVALS	DATE	Amphenol Canada Corp.			
DECIMALS	ANGLES	DRAWN	7/24/2006				
.XX ±.10	± 1°	DESIGNED	7/24/2006	TITLE RUGGED 9 SOCKET CONNECTOR D-SUB WITH SOLDER CUP			
.X ±.25		S.SEMENOV					
MATERIAL AND FINISH		CHECKED		SIZE	DWG. NO. P-MDBE-09SM-860		
		QA APP'D		C			
		IE APP'D		SCALE	3:1	PROJECT	MDB
		DWG APP'D	7/24/2006	SHEET	1 OF 1		
REF.	CODE IDENT. NO.						