

USED ON -

1530004

DIMENSIONING AND TOLERANCING PER ASME Y14.5M USD STANDARDS THIS DRAWING IS A CONTROLLED DOCUMENT.

PART NUMBER	REV	FIRST USED	TERMINATOR	FEED TYPE	DESCRIPTION
1530004-1	G		LEADMAKER	MECH POST FEED	CUTS CARRIER
1530004-2	G		BENCH	MECH PRE FEED	CUTS CARRIER
1530004-6	G		LEADMAKER	MECH POST FEED	CONTINUOUS CARRIER
7-1530004-1	G		LEADMAKER	MECH POST FEED	-1 AND SPARE PARTS
7-1530004-2	G		BENCH	MECH PRE FEED	-2 AND SPARE PARTS
7-1530004-6	G		LEADMAKER	MECH POST FEED	-6 AND SPARE PARTS
7-1530004-7	D		-	-	SPARE PARTS KIT

CRIMP DATA (AMP TERMINAL)
 TERMINAL NAME: TAB 5.8 X 0.8 - ASSY

CRIMP	SIZE	TYPE	RANGE
WIRE	3.30 [.130 IN]	F	3.00-4.00mm ²
INSUL	4.57 [.180 IN]	OV	3.30-4.50 [.130-.177 IN]
WIRE STRIP LENGTH	4.70 [.185 IN]		APPL INSTRUCTION 408-8322 & 408-8490
TERMINAL APPL SPEC	114-18052		FEED 19.50 [.768 IN]

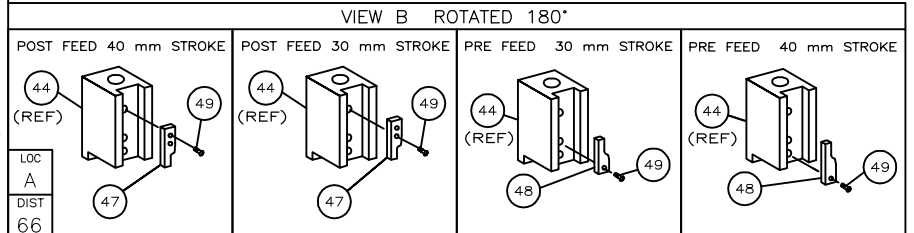
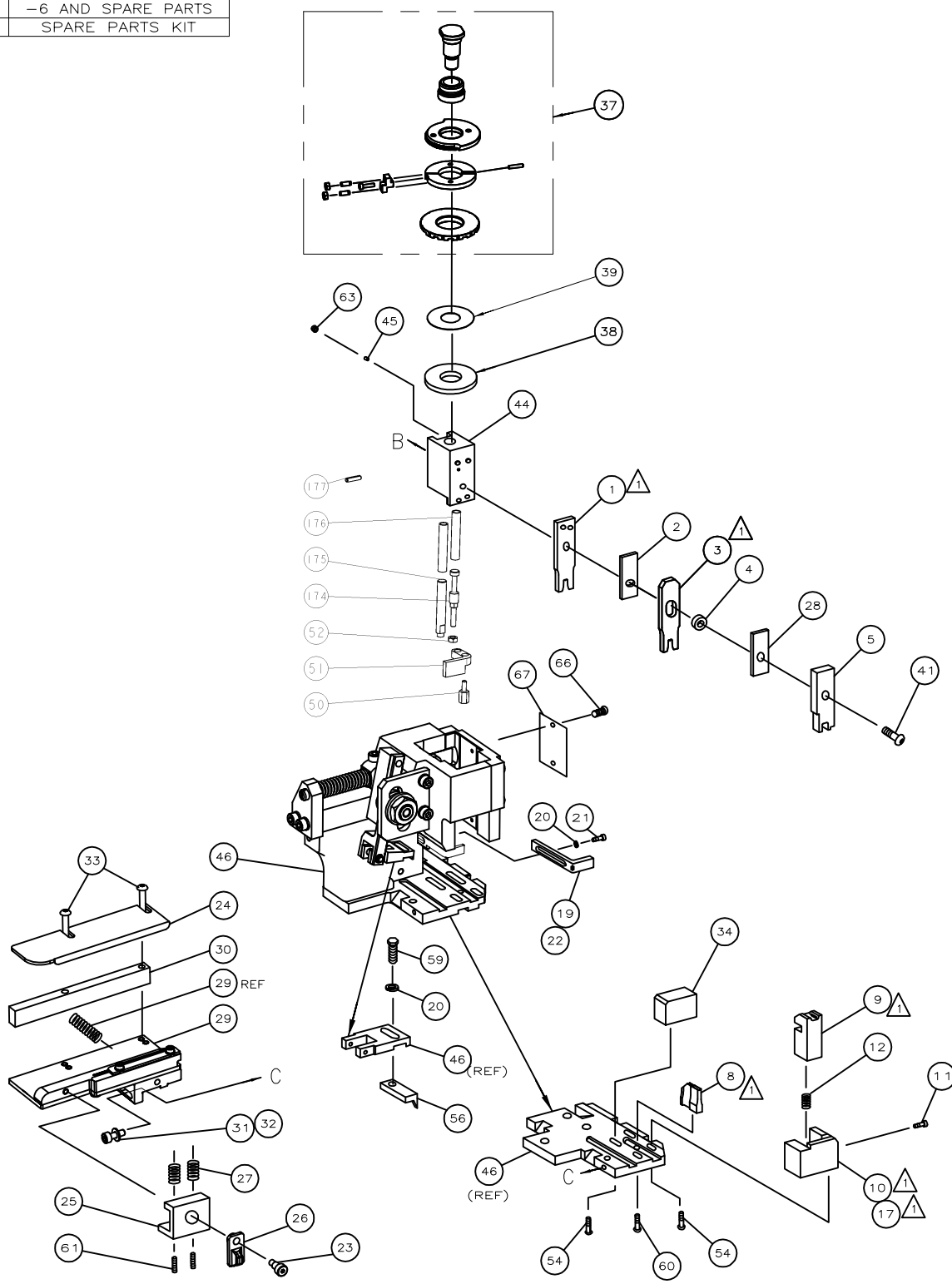
TERMINALS APPLIED

964308				
-	-	-	-	-
-	-	-	-	-
-	-	-	-	-
-	-	-	-	-
-	-	-	-	-
-	-	-	-	-
-	-	-	-	-
-	-	-	-	-
-	-	-	-	-
-	-	-	-	-

WIRE SIZE mm ² AWG	CRIMP HEIGHT *	REF SETTING *
4.00mm ²	2.33 ±0.05 [.092 ±.002 IN]	C0
3.50mm ²	2.23 ±0.05 [.088 ±.002 IN]	C6
3.00mm ²	2.11 ±0.05 [.083 ±.002 IN]	D5

SET UP GAGE 458637-3 LAYOUT L1426006

- ⚠️ RECOMMENDED SPARE PARTS.
 2. GREASE RAM, CAM, CAM FOLLOWER AND FEED ROD LIGHTLY.
 3. LUBRICATE DAILY PER THE APPLICATOR INSTRUCTION SHEET SUPPLIED WITH THE APPLICATOR.



*** WARNING:**
 ON INSTALLATION, SET WIRE DISC TO LARGEST WIRE SIZE SETTING. USE OF SETTINGS BELOW MIN REQUIRED CRIMP HEIGHT SETTING WILL CAUSE DAMAGE TO CRIMP TOOLING.

QTY	REQD	PER	ASSY	PART NO	DESCRIPTION	ITEM NO		
-	1	1	1	1	1	993111-8	PIN, SLOTTED SPRING 3.0X12.0	177
-	2	2	2	2	2	3-22280-7	SPRING, COMPRESSION	176
-	1	1	1	1	1	1752353-1	GUIDE PIN, HOLD DOWN	175
-	1	1	1	1	1	1901680-1	GUIDE PIN, HOLD DOWN	174
-	1	1	1	1	1	1530004	PRINT, APPLICATOR LOG SHEET	72
-	1	1	1	1	1	1338705-3	DOCUMENTATION PACKAGE	71
-	1	1	1	1	1	461264-5	PLATE, IDENTIFICATION	67
-	2	2	2	2	2	21017-2	SCR,DRIVE(#2x.19)ID PLATE	66
-	-	-	-	-	-	-	-	65
-	-	-	-	-	-	-	-	64
-	1	1	1	1	1	3-18031-0	SCR,SKT SET(M6X6)RAM	63
-	-	-	-	-	-	-	-	62
-	2	2	2	2	2	2-18032-5	SCR,SET(M5X20)DRAG	61
-	1	1	1	1	1	18024-7	SCR,BHC(M4X10)ANVIL	60
-	1	1	1	1	1	5-18022-2	SCR,HEX(M4X8)FEED FINGER	59
-	-	-	-	-	-	-	-	58
-	-	-	-	-	-	-	-	57
-	1	1	1	1	1	1338685-1	PAWL, FEED	56
-	-	-	-	-	-	-	-	55
-	4	4	4	4	4	18024-8	SCR,BHC(M4x12)SHEAR HOLDER	54
-	-	-	-	-	-	-	-	53
-	1	1	1	1	1	1-18030-0	NUT, HEX, REG M3.5	52
-	1	1	1	1	1	1901681-1	HOLD DOWN, TERMINAL	51
-	1	1	1	1	1	3-1752354-5	STANDOFF, HOLD DOWN	50
-	1	1	1	1	1	18024-3	SCR,BHC(M3X10)CAM	49
-	-	-	-	-	-	-	-	48
-	-	-	-	-	-	-	-	47
-	1	-	1	-	1	1338675-1	CAM, PRE FEED 30 & 40 mm ST	48
-	1	-	1	-	1	1338676-1	CAM, POST FEED 30 & 40 mm ST	47
-	1	1	1	1	1	1320999-3	APPLICATOR BASIC SUBASSY	46
-	1	1	1	1	1	690191-1	PLUG, NYLON	45
-	1	1	1	1	1	1633724-6	RAM	44
-	-	-	-	-	-	-	-	43
-	-	-	-	-	-	-	-	42
-	1	1	1	1	1	2-18024-6	SCR,BHC(M8X25)RAM	41
-	-	-	-	-	-	-	-	40
-	1	1	1	1	1	690125-1	SHIM SUBASSY	39
-	1	1	1	1	1	469367-7	SPACER, FINE ADJUST	38
-	1	1	1	1	1	879103-3	FINE ADJUST HEAD SUBASSY	37
-	-	-	-	-	-	-	-	36
-	-	-	-	-	-	-	-	35
-	1	1	1	1	1	1-1752356-5	SUPPORT, TERMINAL	34
-	2	2	2	2	2	1-18024-0	SCR,BHC(M4X20)STRIP GUIDE	33
-	1	1	1	1	1	18027-2	WASHER, FLAT(M4)	32
-	1	1	1	1	1	1-18023-2	SCR,SKT CAP(M4X12)MOUNT BLOCK	31
-	1	1	1	1	1	1-1320908-0	SPACER, STRIP GUIDE	30
-	1	1	1	1	1	1633073-2	STRIP GUIDE PLATE ASSY	29
-	1	1	1	1	1	1-455888-4	SPACER, FRONT SHEAR DEP	28
-	2	2	2	2	2	1-22284-0	SPRING, DRAG	27
-	1	1	1	1	1	356835-1	LEVER, DRAG RELEASE	26
-	1	1	1	1	1	240792-1	DRAG, TERMINAL	25
-	1	1	1	1	1	1320928-1	PLATE, STRIP GUIDE	24
-	1	1	1	1	1	980371-4	SCR,SHC SHLD	23
-	1	-	1	-	1	690472-2	STRIPPER	22
-	1	1	1	1	1	1-18023-1	SCR,SHC(M4X10)STRIPPER	21
-	2	2	2	2	2	18025-2	WASHER,LOCK(M4)STRIPPER	20
-	-	-	-	-	-	-	-	19
-	-	-	-	-	-	-	-	18
-	1	-	-	-	-	1338684-1	HOLDER, SHEAR, FRONT (NO-CUT)	17
-	-	-	-	-	-	-	-	16
-	-	-	-	-	-	-	-	15
-	-	-	-	-	-	-	-	14
-	-	-	-	-	-	-	-	13
-	1	1	1	1	1	5-22280-0	SPRING, SHEAR	12
-	1	1	1	1	1	356885-4	STOP, SHEAR	11
-	-	1	1	-	1	1320921-1	HOLDER, SHEAR, FRONT (CUT)	10
-	1	1	1	1	1	659547-2	SHEAR, FLOAT (FRONT)	9
-	1	2	2	2	1	1333209-1	ANVIL	8
-	-	-	-	-	-	-	-	7
-	-	-	-	-	-	-	-	6
-	1	1	1	1	1	2-879343-0	DEPRESSOR, SHEAR (FRONT)	5
-	1	1	1	1	1	1-238011-0	SPACER, BLOCK CRIMPER	4
-	1	2	2	2	1	805783-9	CRIMPER, INSULATION	3
-	1	1	1	1	1	455888-6	SPACER, CRIMPER	2
-	1	2	2	2	1	456410-4	CRIMPER, WIRE	1