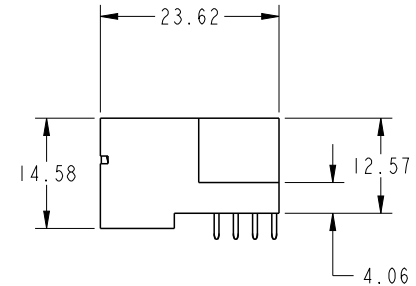
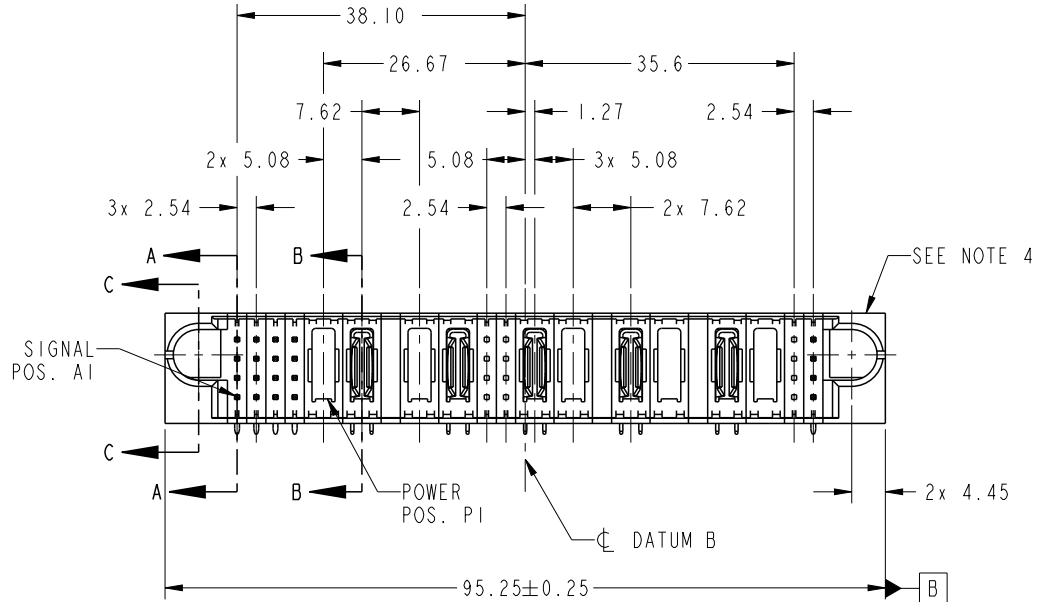


| | | | | | | | | | | | | | | | | | | | |
|-----------------------|------------------|--------|---|---|---|-------|----|----|----|-----|---|-------|----|----|----|-----|----|-----|---|
| PRODUCT NO. | ROWS | SIGNAL | | | | POWER | | | | SIG | | POWER | | | | SIG | | | |
| | | E1 | 1 | 2 | 3 | 4 | P1 | P2 | P3 | P4 | 5 | 6 | P5 | P6 | P7 | P8 | P9 | P10 | 7 |
| 51939-909-- NOTE 3 | D C B A | | | | | | | | | | | | | | | | | | |

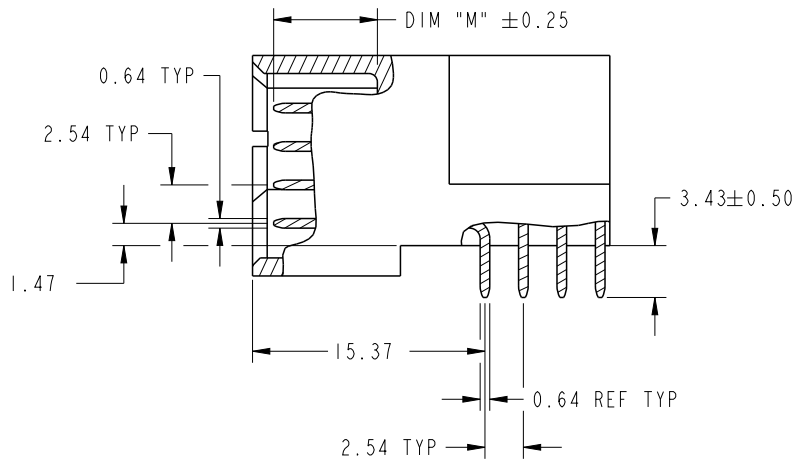


| CODE | DIM "M" MATING LENGTH | CONTACT TYPE |
|------|-----------------------|--------------|
| U | [6.86] | SIGNAL |
| T | [6.86] | SIGNAL |
| S | [6.86] | SIGNAL |
| R | [6.86] | SIGNAL |
| PA | [N/A] | POWER |
| H | [5.59] | SIGNAL |
| X | OMITTED | |

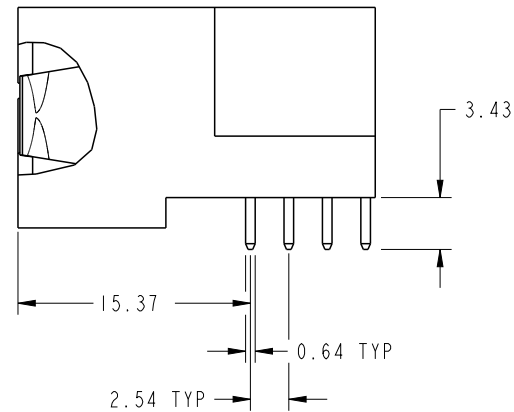
| | | | | | | | | | | |
|---------------------------------------|------------|-------|------------|-----------------|------------------------|--------|--------------|---|---------------------|----------|
| spec ref | - | dr | De-Ming Lu | 2014/07/19 | projection | MM | size | A4 | scale | 1:1 |
| tolerance std | ASME Y14.5 | eng | De-Ming Lu | 2014/09/27 | | | ecn no | - | | |
| TOLERANCES UNLESS OTHERWISE SPECIFIED | | chr | - | - | | | rel level | Released | | |
| surface | linear | 0.X | ±0.5 | www.fci.com | product family | | PwrBlade | title 16S + 4P + 8S + 6P + 8S RIGHT ANGLE SOLDER HEADER cat. no. * | dwg no 51939-909 | rev A |
| ASME Y14.5 | | 0.XXX | ±0.25 | | Product - Customer Drw | | sheet 1 of 4 | | | |
| | angular | 0° | ±2° | | | | | | | |

PRODUCT NUMBER

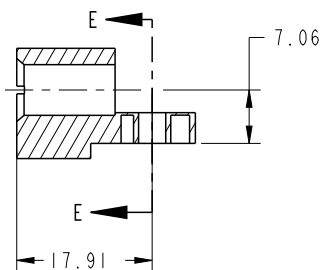
51939-909--
NOTE: 3



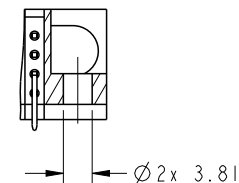
BROKEN-OUT SECTION A-A
SCALE 2:1



BROKEN-OUT SECTION B-B
SCALE 2:1



SECTION C-C

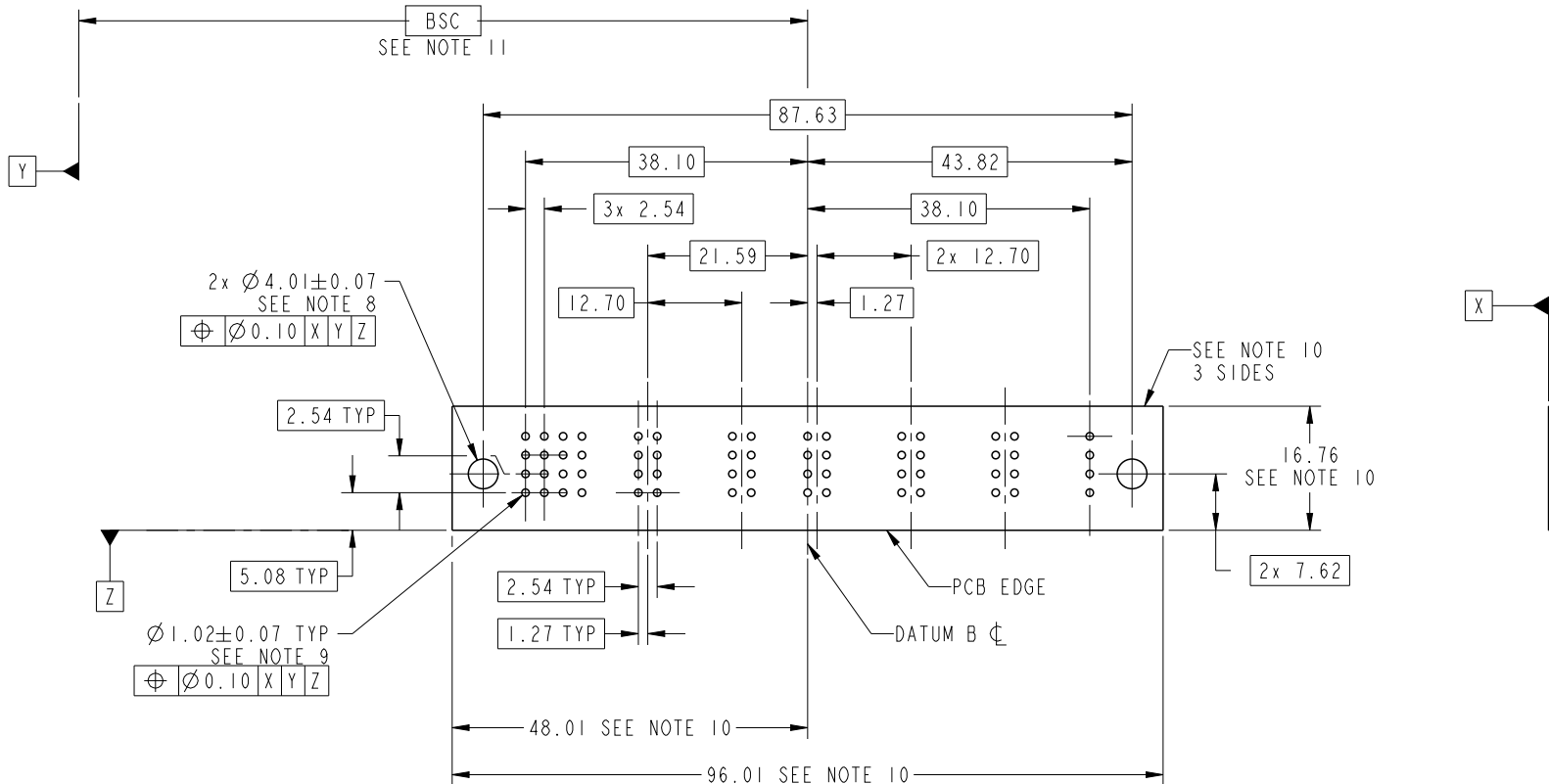


PARTIAL SECTION E-E

| | | | | | | | | |
|-------------|----------------|--|------------------------|----------|--------------|----------|-------|-----|
| dr | De-Ming Lu | 2014/07/19 | projection | MM ←→ | size | A4 | scale | 1:1 |
| eng | De-Ming Lu | 2014/09/27 | | | ecn no | - | | |
| chr | - | - | | | rel level | Released | | |
| appr | Pei-Ming Zheng | 2014/09/27 | product family | PwrBlade | rev | A | | |
| | title | 16S + 4P + 8S + 6P + 8S RIGHT ANGLE SOLDER HEADER | | dwg no | 51939-909 | | | |
| www.fci.com | cat. no. | * | Product - Customer Drw | | sheet 2 of 4 | | | |

PRODUCT NUMBER

51939-909__
NOTE: 3



RECOMMENDED PCB LAYOUT

| | | | | | | | | | |
|-------------|----------------|--|------------------------|----------|-----------|--------------|-------|-----|---|
| dr | De-Ming Lu | 2014/07/19 | projection | MM | size | A4 | scale | 1:1 | |
| eng | De-Ming Lu | 2014/09/27 | | | ecn no | - | | | |
| chr | - | - | | | rel level | Released | | | |
| appr | Pei-Ming Zheng | 2014/09/27 | product family | PwrBlade | | | | | |
| | title | 16S + 4P + 8S + 6P + 8S RIGHT ANGLE SOLDER HEADER | | | dwg no | 51939-909 | | rev | A |
| www.fci.com | cat. no. | * | Product - Customer Drw | | | sheet 3 of 4 | | | |

PRODUCT NUMBER

51939-909__
NOTE: 3

NOTES:

1. DIMENSIONS AND TOLERANCES ARE IN ACCORDANCE WITH ASME Y14.5M, 1994 UNLESS OTHERWISE SPECIFIED.

CONNECTOR NOTES:

- 2. HOUSING MATERIAL: UL 94 V-0 GLASS FILLED HIGH-TEMP THERMOPLASTIC
POWER CONTACT MATERIAL: COPPER ALLOY
SIGNAL PIN MATERIAL: COPPER ALLOY
- 3. SEE ITEM 1 & 2 IN PRINT 10064183 FOR PLATING SPEC OF 51939-909 AND 51939-909LF RESPECTIVELY.
- 4. MANUFACTURER'S NAME, DATE CODE AND OPTIONAL P/N TO APPEAR ON THIS SURFACE. THE MARK CAN BE OMITTED IF THERE IS NOT ENOUGH SPACE ON THIS SURFACE.
- 5. PRODUCT SPECIFICATION GS-12-149.
APPLICATION SPECIFICATION BUS-20-067.
- 6. PACKAGED IN TRAYS.

PCB NOTES:

- 7. ALL HOLE DIAMETERS ARE FINISHED HOLE SIZE.
- 8. MOUNTING HOLES, WHERE APPLICABLE, ARE UNPLATED.
- 9. $\varnothing 1.151 \pm 0.025$ DRILLED HOLES PLATED WITH
0.008 MIN SnPb OR Sn OVER 0.03
TO 0.08 Cu PLATING TO ACHIEVE
 $\varnothing 1.02 \pm 0.07$ HOLE.
- 10. CONNECTOR KEEP-OUT ZONE.
- 11. DATUM AND BASIC DIMENSIONS ARE ESTABLISHED BY CUSTOMER.

| | | | | | | | | |
|-------------|----------------|------------|----------------|------------------------|---|---------------------|-----------|----------|
| dr | De-Ming Lu | 2014/07/19 | projection | MM | size | A4 | scale | 1:1 |
| eng | De-Ming Lu | 2014/09/27 | | | ecn no | - | | |
| chr | - | - | | | product family | PwrBlade | rel level | Released |
| appr | Pei-Ming Zheng | 2014/09/27 | | | title 16S + 4P + 8S + 6P + 8S RIGHT ANGLE SOLDER HEADER | dwg no 51939-909 | rev A | |
| www.fci.com | | cat. no. | * | Product - Customer Drw | | sheet 4 of 4 | | |



Copyright FCI.