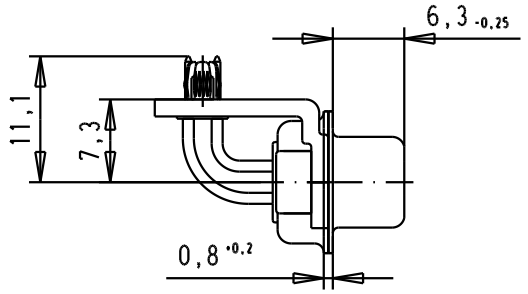
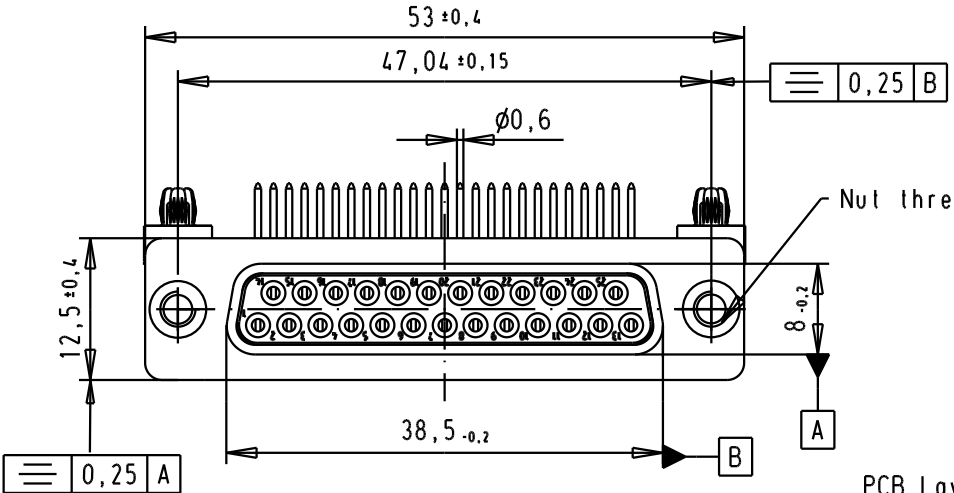


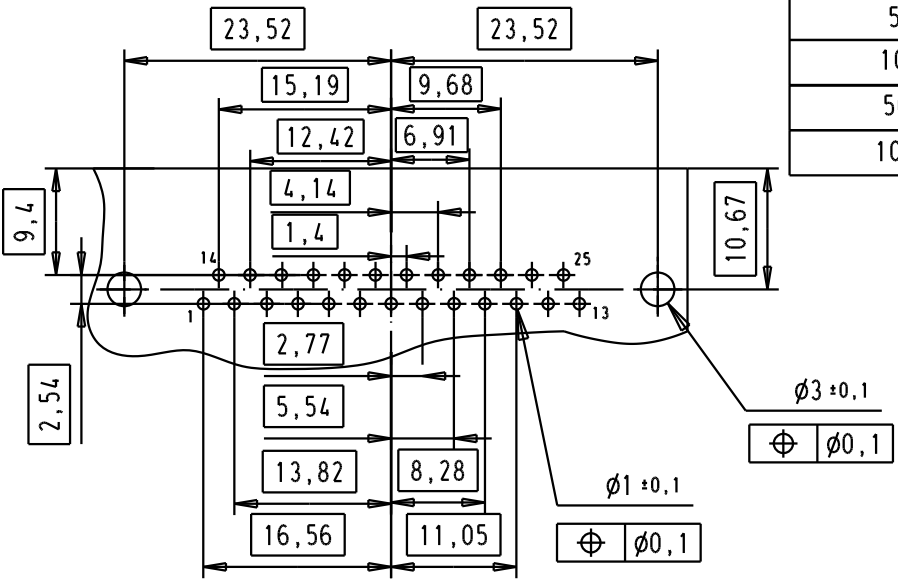
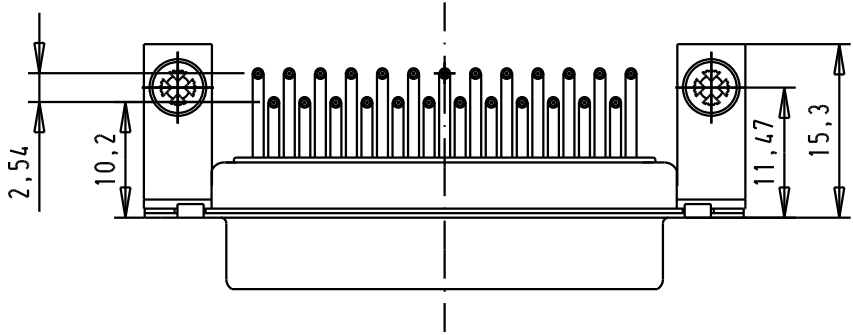
SPECIFICATION

Mating Cycles	500
Filter type	C
Capacitance	470pf ± 20%
Working Voltage	100v
Current Rating	7.5A
Insulation Resistance	>1GΩ

FREQUENCY (MHz)	ATTENUATION (dB)
5	-
10	1dB
50	10dB
100	15dB
500	35dB
1000	32dB



PCB Layout, Component side, thickness 1,6 mm



09643147223	M3
09643147222	UNC 4-40
Part number	Nut thread

Mod.	Dat.	Name
33416	19/01/06	JMDR
32137	16/08/04	TR
31058	8-JUL-02	CV
HARTING EURL F-95972 Paris		

All Dim. in mm  
Orig. Size DIN A 4

D-Sub, female, angled,  
25 Poles, turned solder pins,  
tin plated shell with brackets,  
board-locks and clinch nuts

TB 0964314722x