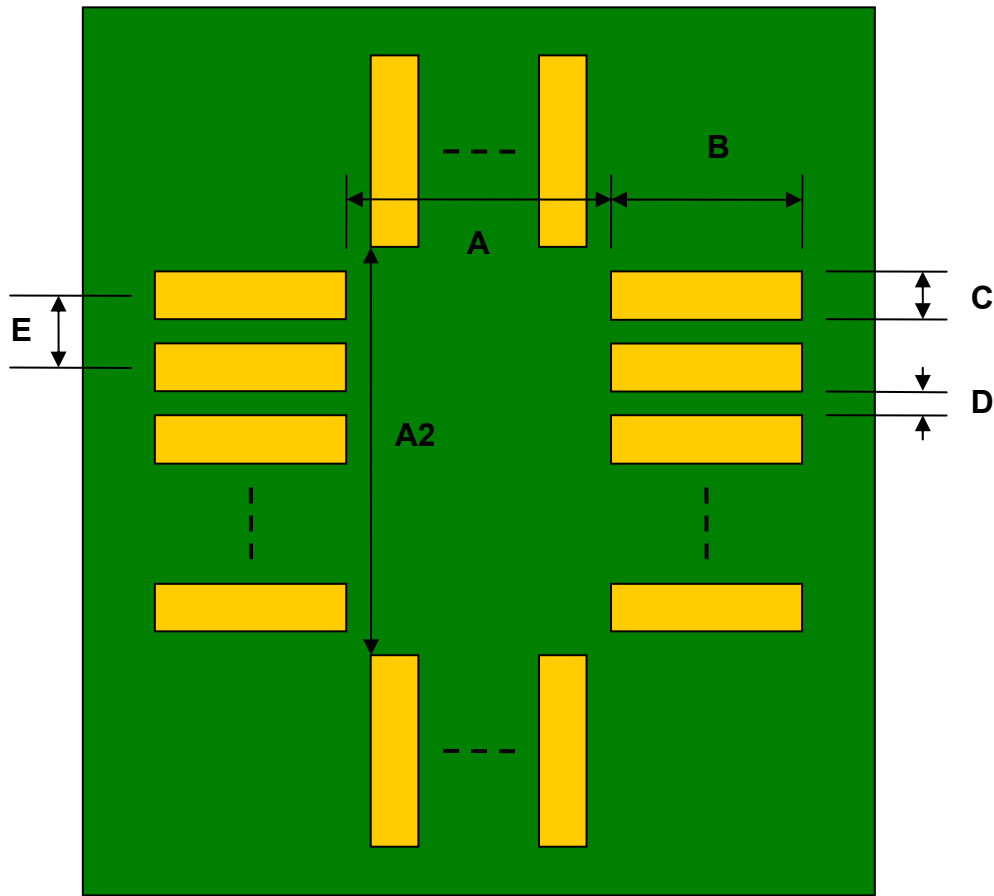


PLCC-20 Socket to DIP-20 SMT Adapter (1.27 mm pitch, 10 x 10 mm body)

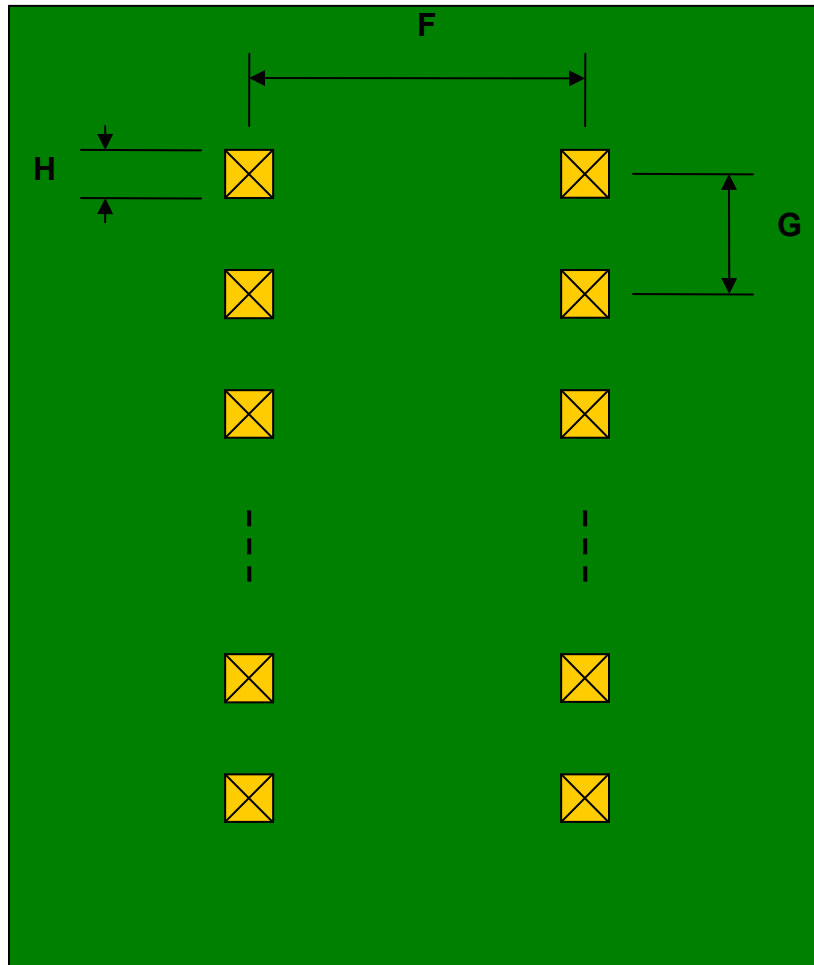
DIMENSIONS						
REF.	mm			inches		
	MIN.	TYP.	MAX.	MIN.	TYP.	MAX.
A		6.75				
A2		6.75				
B		2.75				
C		0.80				
D		0.47				
E		1.27				
F					0.300	
G					0.100	
H					0.025	

Top View (SMT Footprint)



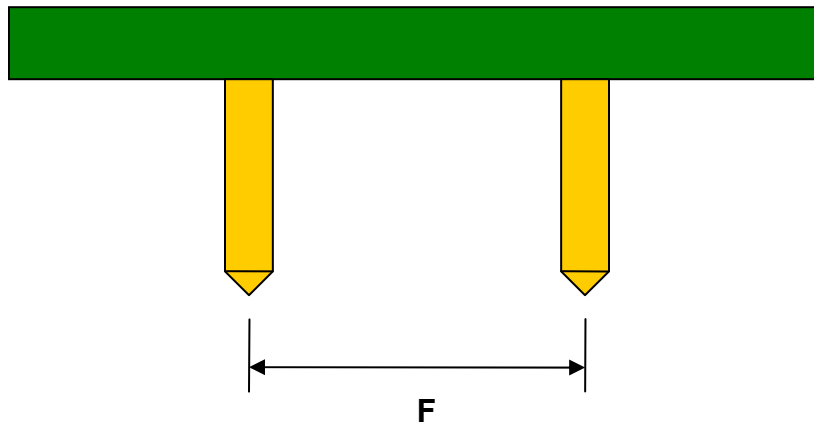
(Representative drawing only - not to scale)

Bottom View (DIP Pins)



(Representative drawing only - not to scale)

Side View (DIP Pins)



(Representative drawing only - not to scale)