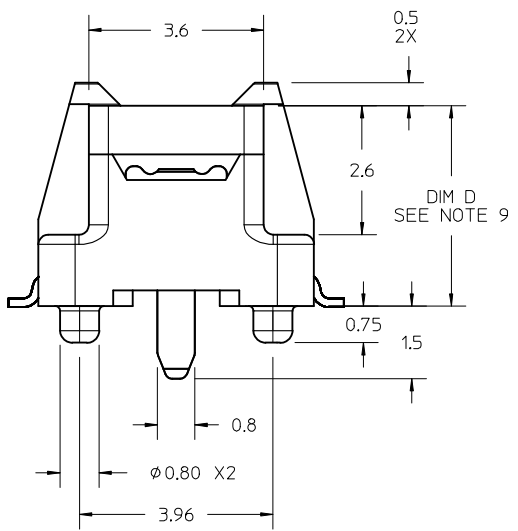
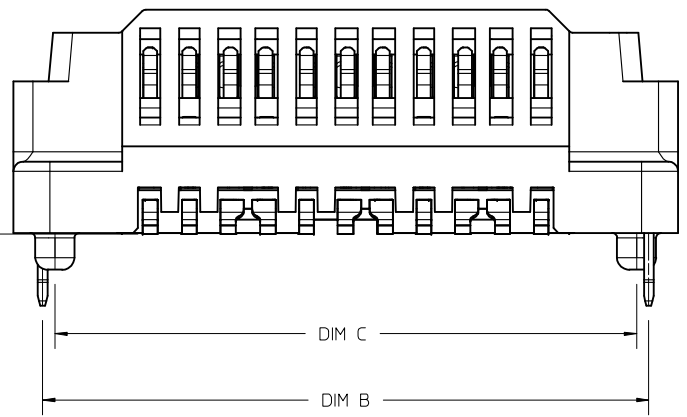
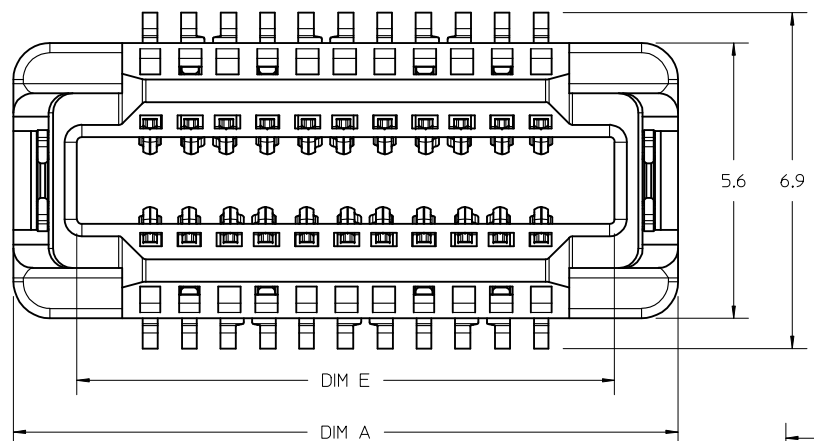


10	9	8	7	6	5	4	3	2	1
PART NUMBER	CKT SIZE	DIFF PAIRS	SPARE CKTS	DIM A	DIM B	DIM C	DIM E	DIM D	
171450-3102	22	6	2	13.6	12.40	11.90	11.0		4.10
171450-3106	60	16	8	28.8	27.60	27.10	26.2		4.10
171450-3114	82	22	10	41.6	40.40	39.90	11.0/ 26.2		4.10



- NOTES:
1. MATERIALS: HOUSING: LCP, UL94V-0, BLACK
CONTACTS: HIGH PERFORMANCE COPPER ALLOY
 2. FINISH: 0.76 μ m MIN SELECT GOLD IN CONTACT AREA,
SELECT MATTE TIN IN TAIL AREA, OVERALL NICKEL.
 3. PRODUCT SPECIFICATION: PS-171446-0001
 4. PACKAGING SPECIFICATION: PK-70873-6002
 5. MATES WITH SPEEDSTACK PLUGS: 171446 & 171810
 6. APPLICATION SPECIFICATION: AS-171450-9999
 7. COSMETIC SPECIFICATION: PS-45499-002 CLASS B
 8. PART STATUS: CONTACT MOLEX
 9. DIM D ON THIS DRAWING PLUS DIM D ON DRAWING # SD-171446-1000
EQUALS THE SYSTEM MATED STACK HEIGHT
 10. PARTS SHIPPED WITH PICK AND PLACE COVERS.

UPDATE EDGE CARD EC NO: UCP2015-5331 DRWN: JB INGHAM 2015/08/24 CHKD: DMC GOWAN 2015/08/24 APPR: DMC GOWAN 2015/09/18	QUALITY SYMBOLS $\nabla = 0$ $\nabla = 0$ $\nabla = 0$	GENERAL TOLERANCES (UNLESS SPECIFIED)		DIMENSION STYLE MM ONLY		SCALE 10:1	DESIGN UNITS METRIC	THIRD ANGLE PROJECTION		
				DRAWN BY JB INGHAM		DATE 2014/11/11		TITLE SPEEDSTACK RECEPTACLE ASSEMBLY SALES DRAWING 		
				CHECKED BY DMC GOWAN		DATE 2014/11/11				
				APPROVED BY DMC GOWAN		DATE 2015/01/26		DOCUMENT NO. SD-171450-3000		SHEET NO. 1 OF 8

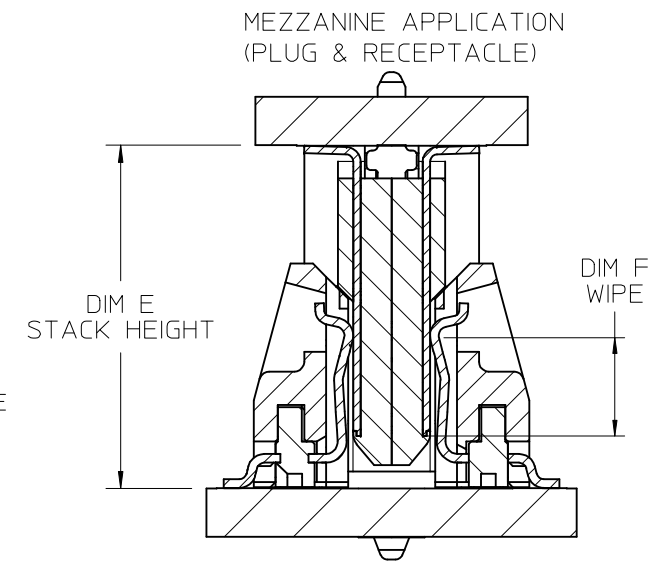
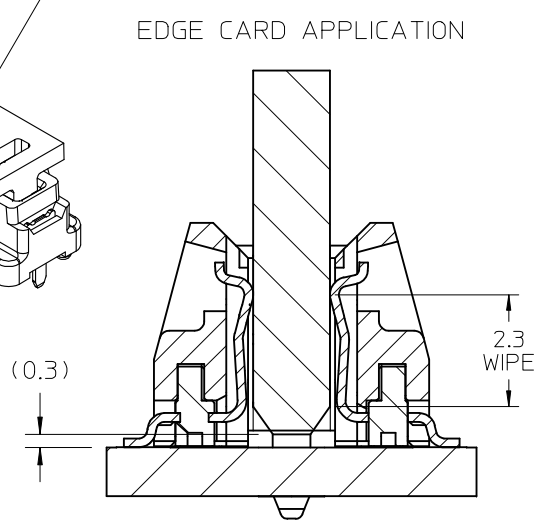
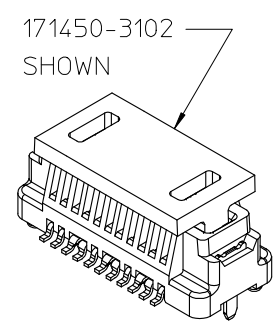
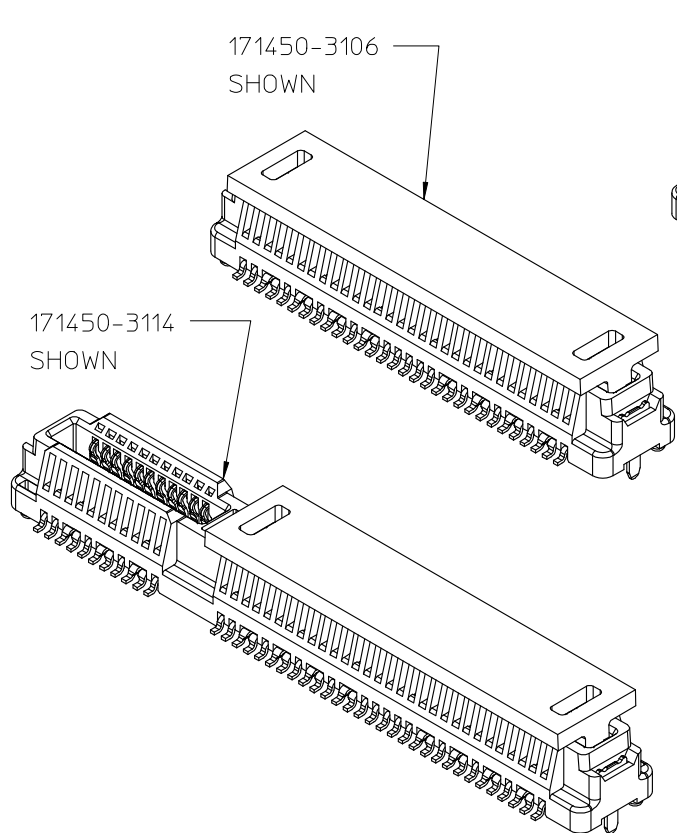
ANGULAR $\pm 1/2^\circ$
DRAFT WHERE APPLICABLE
MUST REMAIN WITHIN DIMENSIONS

SIZE B

THIS DRAWING CONTAINS INFORMATION THAT IS PROPRIETARY TO MOLEX INCORPORATED AND SHOULD NOT BE USED WITHOUT WRITTEN PERMISSION

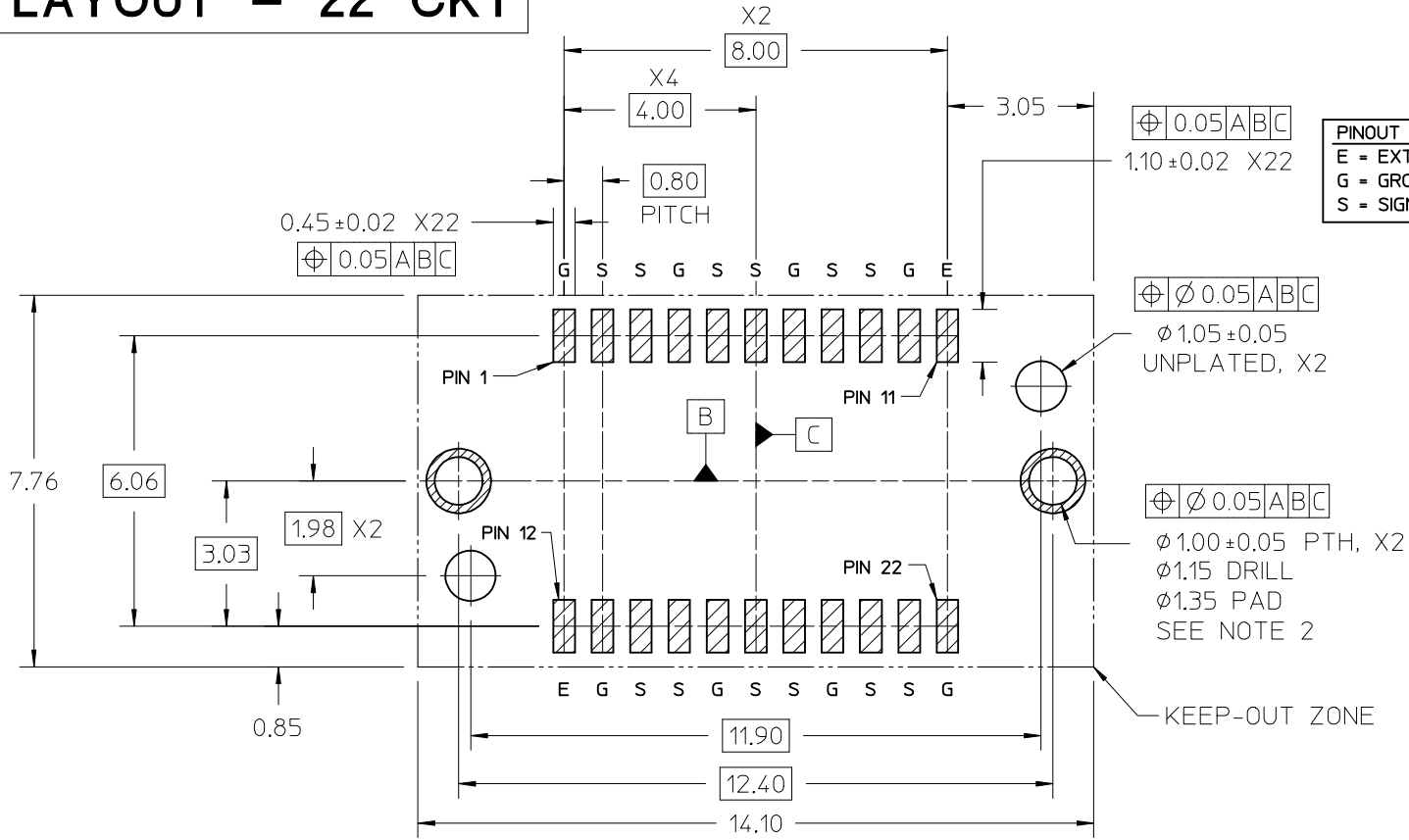
MEZZANINE (PLUG & RECEPTACLE) STACKING CHART

RECEPTACLE OPTIONS	CIRCUITS	MOLEX P/N	HEIGHT	PLUG OPTIONS (1mm WIPE)				PLUG OPTIONS (2mm WIPE)				
				HEIGHT	1mm	2mm	3mm	4mm	1mm	2mm	3mm	4mm
				22 CKT	171446-1101	171446-1102	171446-1103	171446-1104	171446-1105	171446-1106	171446-1107	171446-1108
				60 CKT	171446-1109	171446-1110	171446-1111	171446-1112	171446-1113	171446-1114	171446-1115	171446-1116
22 CKT	171450-3102	4mm	5/1	6/1	7/1	8/1	5/2	6/2	7/2	8/2		
60 CKT	171450-3106											
82 CKT	171450-3114											
				STACK HEIGHT (DIM E)/WIPE (DIM F)								



SEE SHEET 1 EC NO: UCP2015-5331 DRWN: JBINGHAM 2015/08/24 CHKD: DMCGOWAN 2015/08/24 APPR: DMCGOWAN 2015/09/18	QUALITY SYMBOLS ▽/0 ▽/0 ▽/0	GENERAL TOLERANCES (UNLESS SPECIFIED) <table border="1"> <thead> <tr> <th></th> <th>mm</th> <th>INCH</th> </tr> </thead> <tbody> <tr> <td>4 PLACES</td> <td>±---</td> <td>±---</td> </tr> <tr> <td>3 PLACES</td> <td>±---</td> <td>±---</td> </tr> <tr> <td>2 PLACES</td> <td>±0.13</td> <td>±---</td> </tr> <tr> <td>1 PLACE</td> <td>±0.25</td> <td>±---</td> </tr> <tr> <td>0 PLACE</td> <td>±---</td> <td>±---</td> </tr> </tbody> </table>		mm	INCH	4 PLACES	±---	±---	3 PLACES	±---	±---	2 PLACES	±0.13	±---	1 PLACE	±0.25	±---	0 PLACE	±---	±---	DIMENSION STYLE MM ONLY	SCALE 10:1	DESIGN UNITS METRIC	THIRD ANGLE PROJECTION
		mm	INCH																					
	4 PLACES	±---	±---																					
	3 PLACES	±---	±---																					
2 PLACES	±0.13	±---																						
1 PLACE	±0.25	±---																						
0 PLACE	±---	±---																						
MATERIAL NO. SEE CHART	DRAWN BY JBINGHAM	DATE 2014/11/11	CHECKED BY DMCGOWAN	DATE 2014/11/11	TITLE SPEEDSTACK RECEPTACLE ASSEMBLY SALES DRAWING																			
DRAFT WHERE APPLICABLE MUST REMAIN WITHIN DIMENSIONS	ANGULAR ±1/2°	APPROVED BY DMCGOWAN	DATE 2015/01/26	DOCUMENT NO. SD-171450-3000	SHEET NO. 2 OF 8																			
SIZE B	THIS DRAWING CONTAINS INFORMATION THAT IS PROPRIETARY TO MOLEX INCORPORATED AND SHOULD NOT BE USED WITHOUT WRITTEN PERMISSION																							

PCB LAYOUT - 22 CKT



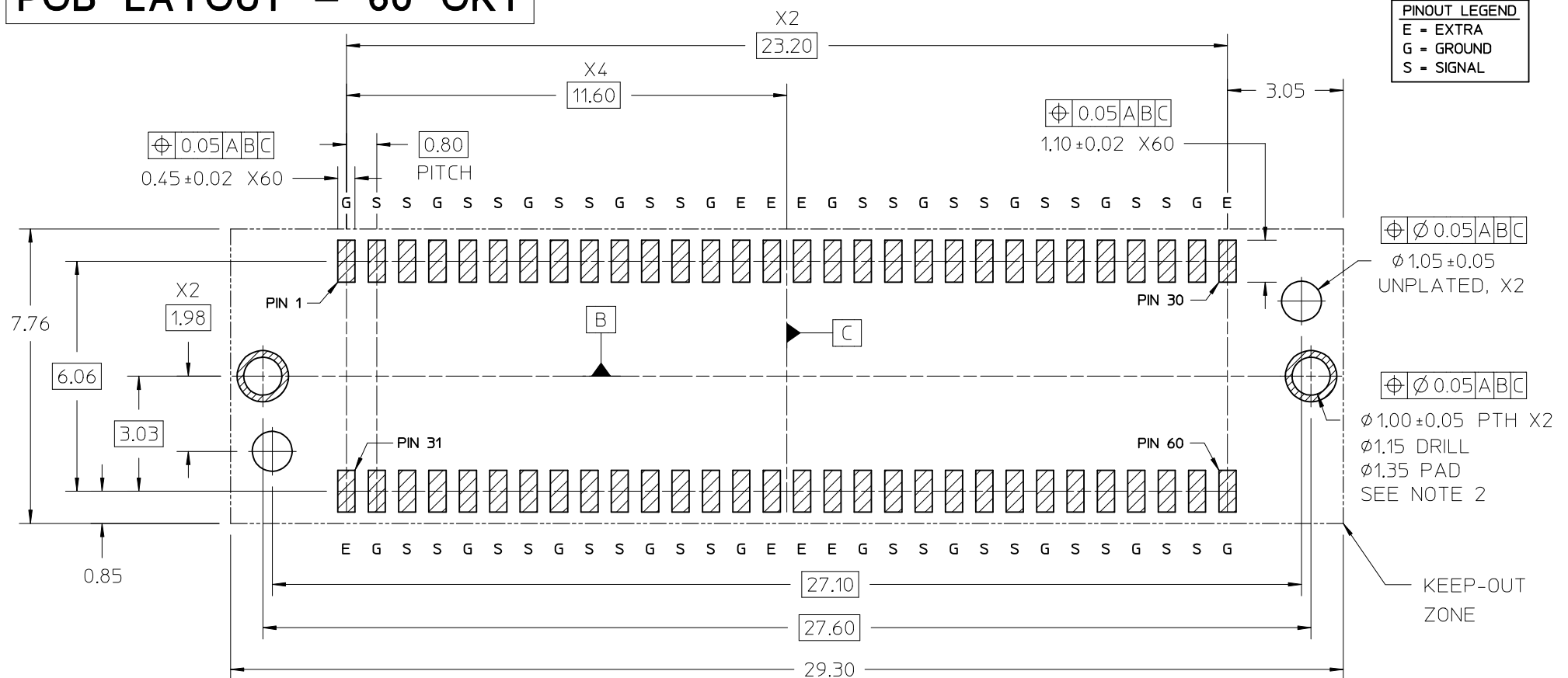
PINOUT LEGEND
 E = EXTRA
 G = GROUND
 S = SIGNAL

PCB LAYOUT (COMPONENT SIDE)
 SOLDER PASTE THICKNESS: 0.15 MIN
 DATUM [A] IS THE BOTTOM SURFACE OF THE PCB

- NOTES:
- PIN NUMBERING IS FOR REFERENCE ONLY. OTHER PIN NUMBERS WILL NOT AFFECT THE OPERATION OF THE CONNECTOR.
 - RETENTION NAIL MUST BE SOLDERED ONTO THE PCB FOR PROPER CONNECTOR FUNCTION.

SEE SHEET 1 EC NO: UCP2015-5331 DRAWN: JBINGHAM 2015/08/24 CHKD: DMCGOWAN 2015/08/24 APPR: DMCGOWAN 2015/09/18	QUALITY SYMBOLS ▽=0 ▽=0 ▽=0	GENERAL TOLERANCES (UNLESS SPECIFIED)		DIMENSION STYLE MM ONLY		SCALE 10:1	DESIGN UNITS METRIC	THIRD ANGLE PROJECTION		
		4 PLACES ± --- ± ---		DRAWN BY JBINGHAM		DATE 2014/11/11		TITLE SPEEDSTACK RECEPTACLE ASSEMBLY SALES DRAWING molex DOCUMENT NO. SD-171450-3000 SHEET NO. 3 OF 8		
		3 PLACES ± --- ± ---		CHECKED BY DMCGOWAN		DATE 2014/11/11				
		2 PLACES ± 0.13 ± ---		APPROVED BY DMCGOWAN		DATE 2015/01/26				
1 PLACE ± 0.25 ± ---		MATERIAL NO. SEE CHART								
0 PLACE ± --- ± ---		ANGULAR ± 1/2° DRAFT WHERE APPLICABLE MUST REMAIN WITHIN DIMENSIONS		SIZE B		THIS DRAWING CONTAINS INFORMATION THAT IS PROPRIETARY TO MOLEX INCORPORATED AND SHOULD NOT BE USED WITHOUT WRITTEN PERMISSION				

PCB LAYOUT - 60 CKT



PINOUT LEGEND	
E	= EXTRA
G	= GROUND
S	= SIGNAL

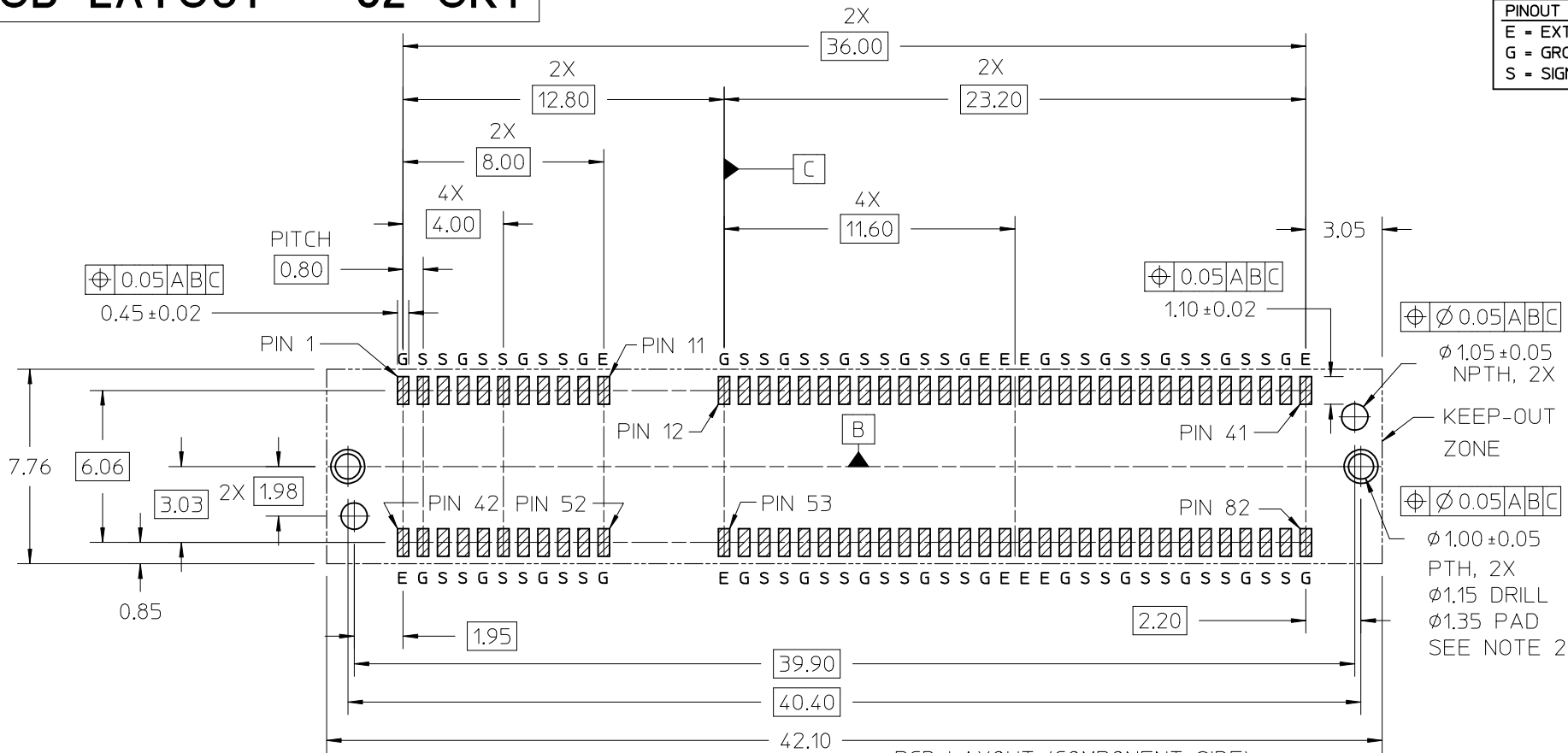
PCB LAYOUT (COMPONENT SIDE)
 SOLDER PASTE THICKNESS: 0.15 MIN
 DATUM [A] IS THE BOTTOM SURFACE OF THE PCB

- NOTES:
- PIN NUMBERING IS FOR REFERENCE ONLY. OTHER PIN NUMBERS WILL NOT AFFECT THE OPERATION OF THE CONNECTOR.
 - RETENTION NAIL MUST BE SOLDERED ONTO THE PCB FOR PROPER CONNECTOR FUNCTION.

SEE SHEET 1 EC NO: UCP2015-5331 DRAWN: JBINGHAM 2015/08/24 CHKD: DMCGOWAN 2015/08/24 APPR: DMCGOWAN 2015/09/18	QUALITY SYMBOLS	GENERAL TOLERANCES (UNLESS SPECIFIED)		DIMENSION STYLE		SCALE	DESIGN UNITS	THIRD ANGLE PROJECTION	
	F/0 F/0 F/0	mm		MM ONLY		10:1	METRIC	DRAWN BY: JBINGHAM 2014/11/11 CHECKED BY: DMCGOWAN 2014/11/11 APPROVED BY: DMCGOWAN 2015/01/26 MATERIAL NO. SEE CHART DOCUMENT NO. SD-171450-3000	
		INCH		DATE					
		4 PLACES ± --- ± ---		DATE					
3 PLACES ± --- ± ---		DATE							
2 PLACES ± 0.13 ± ---		DATE		TITLE		SPEEDSTACK RECEPTACLE ASSEMBLY SALES DRAWING molex			
1 PLACE ± 0.25 ± ---		DATE		SHEET NO.					
0 PLACE ± --- ± ---		DATE		4 OF 8		THIS DRAWING CONTAINS INFORMATION THAT IS PROPRIETARY TO MOLEX INCORPORATED AND SHOULD NOT BE USED WITHOUT WRITTEN PERMISSION			

PCB LAYOUT - 82 CKT

PINOUT LEGEND	
E	- EXTRA
G	- GROUND
S	- SIGNAL



PCB LAYOUT (COMPONENT SIDE)

SOLDER PASTE THICKNESS: 0.15 MIN
 DATUM [A] IS THE BOTTOM SURFACE OF THE PCB

NOTES:

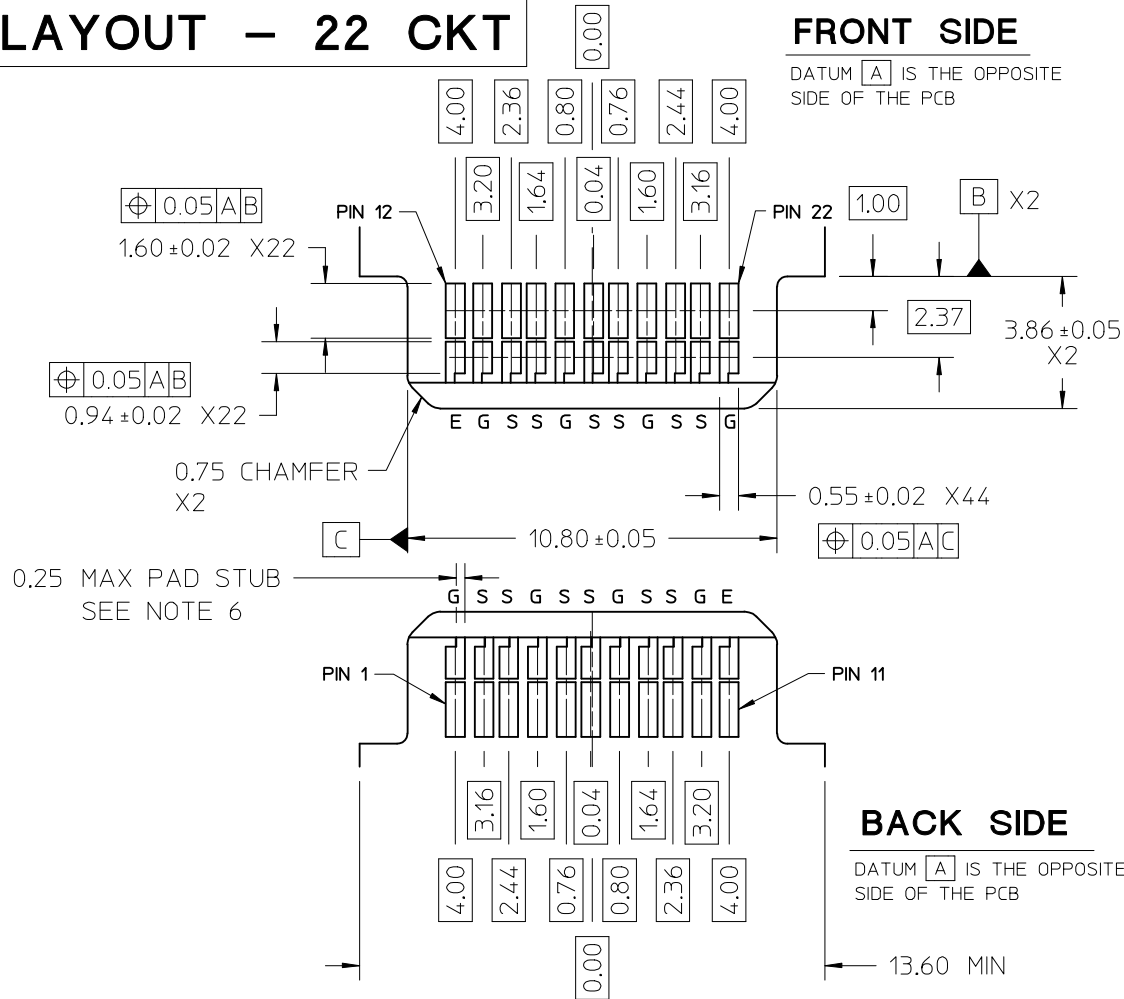
- PIN NUMBERING IS FOR REFERENCE ONLY. OTHER PIN NUMBERS WILL NOT AFFECT THE OPERATION OF THE CONNECTOR.
- RETENTION NAIL MUST BE SOLDERED ONTO THE PCB FOR PROPER CONNECTOR FUNCTION.

SEE SHEET 1 EC NO: UCP2015-5331 DRAWN: JBINGHAM 2015/08/24 CHKD: DMCGOWAN 2015/08/24 APPR: DMCGOWAN 2015/09/18	QUALITY SYMBOLS	GENERAL TOLERANCES (UNLESS SPECIFIED)	DIMENSION STYLE MM ONLY	SCALE 6:1	DESIGN UNITS METRIC	THIRD ANGLE PROJECTION
	▽=0	mm INCH	DRAWN BY DATE JBINGHAM 2014/11/11	TITLE	SPEEDSTACK RECEPTACLE ASSEMBLY SALES DRAWING molex DOCUMENT NO. SD-171450-3000 SHEET NO. 5 OF 8	
	▽=0	4 PLACES ± --- ± ---	CHECKED BY DATE DMCGOWAN 2014/11/11			
	▽=0	3 PLACES ± 0.13 ± ---	APPROVED BY DATE DMCGOWAN 2015/01/26			
▽=0	2 PLACES ± 0.25 ± ---					
		0 PLACE ± --- ± ---	MATERIAL NO.			
		ANGULAR ±1/2° DRAFT WHERE APPLICABLE MUST REMAIN WITHIN DIMENSIONS	SIZE B	THIS DRAWING CONTAINS INFORMATION THAT IS PROPRIETARY TO MOLEX INCORPORATED AND SHOULD NOT BE USED WITHOUT WRITTEN PERMISSION		

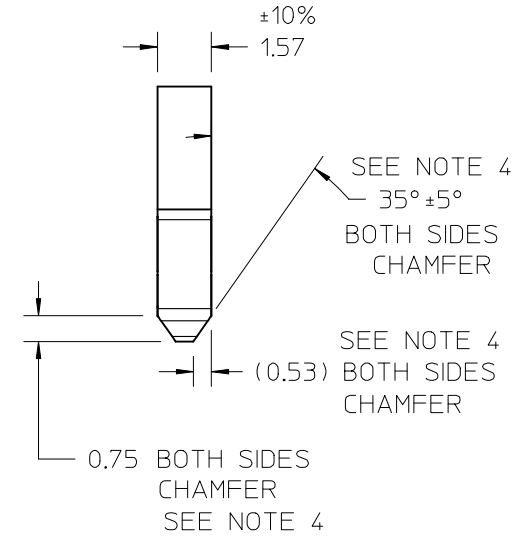
EDGECARD LAYOUT - 22 CKT

FRONT SIDE

DATUM **A** IS THE OPPOSITE SIDE OF THE PCB



OVER CONTACT PADS



BACK SIDE

DATUM **A** IS THE OPPOSITE SIDE OF THE PCB

PINOUT LEGEND

- E = EXTRA
- G = GROUND
- S = SIGNAL

NOTES:

1. PIN NUMBERING IS FOR REFERENCE ONLY. OTHER PIN NUMBERS WILL NOT AFFECT THE OPERATION OF THE CONNECTOR.
2. EDGE CARD SHOULDERS STOP ON RECEPTACLE SHOULDERS. EDGE CARD BOTTOM DOES NOT CONTACT RECEPTACLE PCB.
3. PAD SET BACK FROM CHAMFER ENOUGH TO ACCOMMODATE LARGEST CHAMFER WITHOUT DAMAGE TO PAD EDGE.
4. CHAMFER DEPTH SHOULD BE AS LARGE AS PRACTICAL TO ENSURE CORRECT MATING TO THE RECEPTACLE.
5. ALL CHAMFERED EDGES SHOULD BE ROUNDED WHERE POSSIBLE.
6. INTERNAL PLATING BRIDGES ARE PREFERRED TO ELIMINATE PAD STUB.

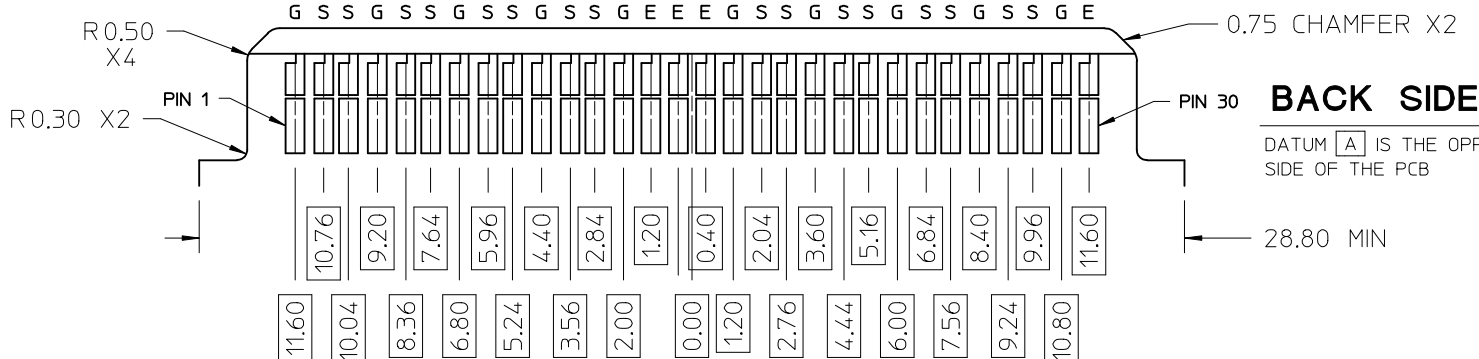
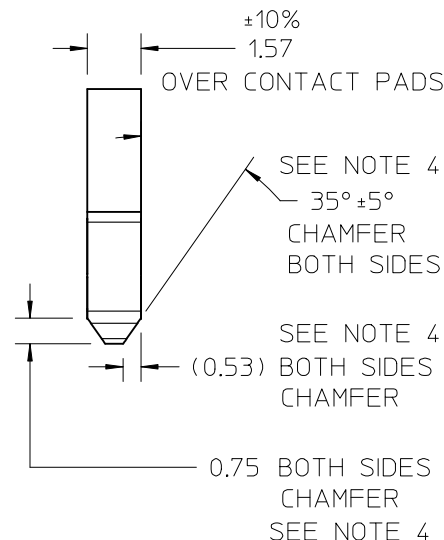
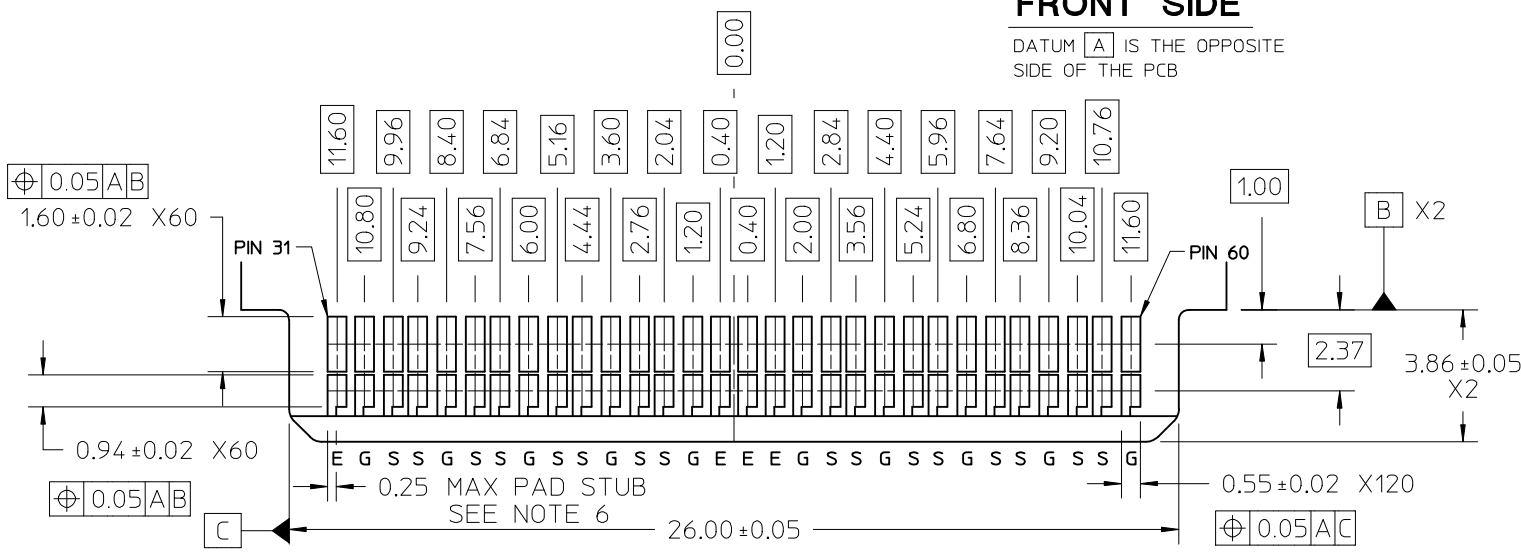
SEE SHEET 1 EC NO: UCP2015-5331 DRAWN: JBINGHAM 2015/08/24 CHKD: DMCGOWAN 2015/08/24 APPR: DMCGOWAN 2015/09/18	QUALITY SYMBOLS ▽=0 ▽=0 ▽=0	GENERAL TOLERANCES (UNLESS SPECIFIED)		DIMENSION STYLE		SCALE	DESIGN UNITS	THIRD ANGLE PROJECTION			
				MM ONLY		7:1	METRIC				
				DRAWN BY DATE		TITLE		SPEEDSTACK RECEPTACLE ASSEMBLY SALES DRAWING molex			
				CHECKED BY DATE		APPROVED BY DATE					
		MATERIAL NO.		DOCUMENT NO.		SHEET NO.					
		SEE CHART		SD-171450-3000		6 OF 8					
		THIS DRAWING CONTAINS INFORMATION THAT IS PROPRIETARY TO MOLEX INCORPORATED AND SHOULD NOT BE USED WITHOUT WRITTEN PERMISSION									

EDGE CARD LAYOUT - 60 CKT

PINOUT LEGEND	
E	= EXTRA
G	= GROUND
S	= SIGNAL

FRONT SIDE

DATUM [A] IS THE OPPOSITE SIDE OF THE PCB



BACK SIDE

DATUM [A] IS THE OPPOSITE SIDE OF THE PCB

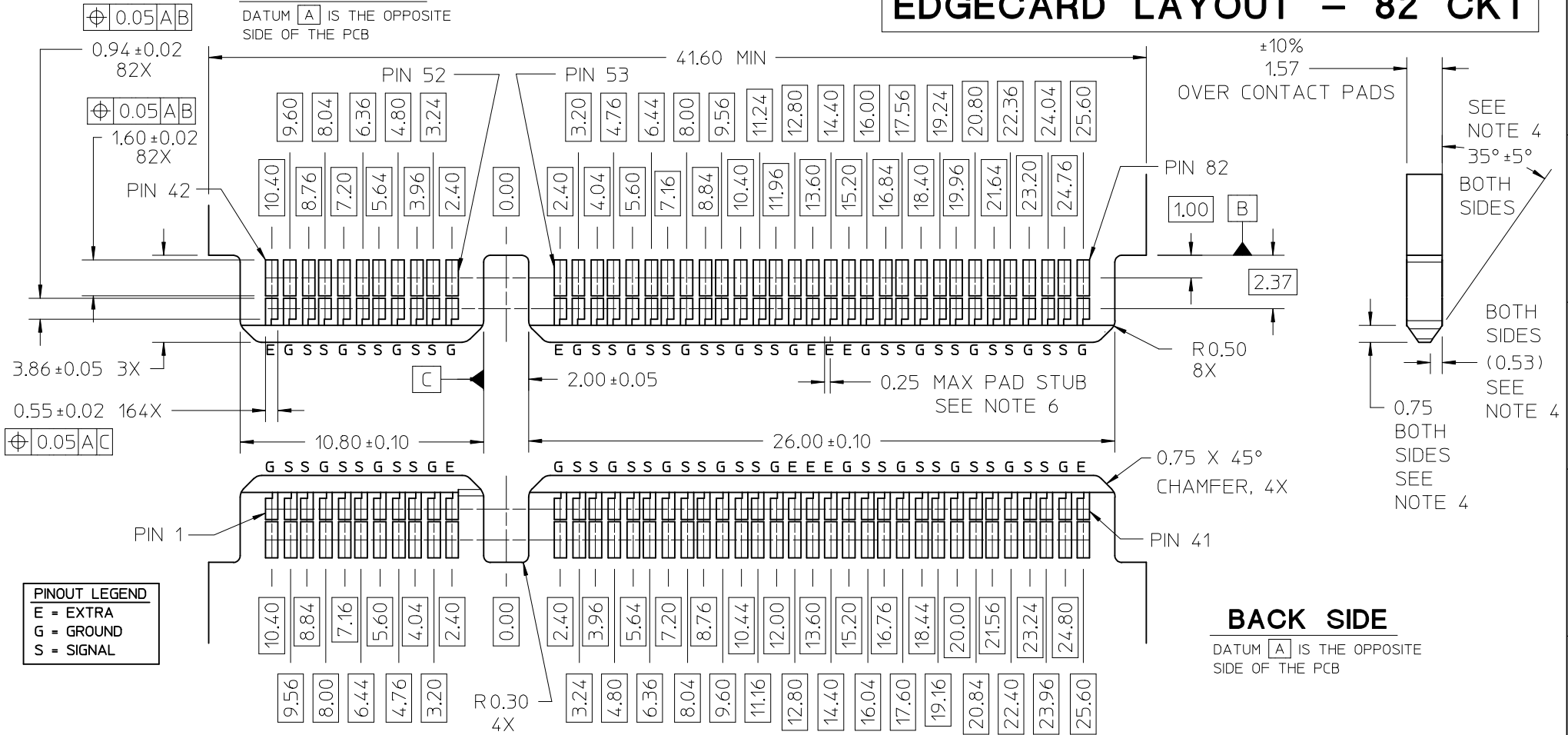
- NOTES:
- PIN NUMBERING IS FOR REFERENCE ONLY. OTHER PIN NUMBERS WILL NOT AFFECT THE OPERATION OF THE CONNECTOR.
 - EDGE CARD SHOULDERS STOP ON RECEPTACLE SHOULDERS. EDGE CARD BOTTOM DOES NOT CONTACT RECEPTACLE PCB.
 - PAD SET BACK FROM CHAMFER ENOUGH TO ACCOMMODATE LARGEST CHAMFER WITHOUT DAMAGE TO PAD EDGE.
 - CHAMFER DEPTH SHOULD BE AS LARGE AS PRACTICAL TO ENSURE CORRECT MATING TO THE RECEPTACLE.
 - ALL CHAMFERED EDGES SHOULD BE ROUNDED WHERE POSSIBLE.
 - INTERNAL PLATING BRIDGES ARE PREFERRED TO ELIMINATE PAD STUB.

SEE SHEET 1 EC NO: UCP2015-5331 DRWN: JBINGHAM 2015/08/24 CHKD: DMCGOWAN 2015/08/24 APPR: DMCGOWAN 2015/09/18	QUALITY SYMBOLS ▽=0 ▽=0 ▽=0	GENERAL TOLERANCES (UNLESS SPECIFIED)		DIMENSION STYLE MM ONLY		SCALE 7:1	DESIGN UNITS METRIC	THIRD ANGLE PROJECTION	
		4 PLACES ± --- ± ---	mm INCH	DRAWN BY JBINGHAM	DATE 2014/11/11	TITLE SPEEDSTACK RECEPTACLE ASSEMBLY SALES DRAWING			
		3 PLACES ± --- ± ---	± 0.13 ± ---	CHECKED BY DMCGOWAN	DATE 2014/11/11	molex			
		2 PLACES ± 0.25 ± ---	± --- ± ---	APPROVED BY DMCGOWAN	DATE 2015/01/26	MATERIAL NO. SEE CHART	DOCUMENT NO. SD-171450-3000	SHEET NO. 7 OF 8	
ANGULAR ±1/2° DRAFT WHERE APPLICABLE MUST REMAIN WITHIN DIMENSIONS		THIS DRAWING CONTAINS INFORMATION THAT IS PROPRIETARY TO MOLEX INCORPORATED AND SHOULD NOT BE USED WITHOUT WRITTEN PERMISSION							

EDGECARD LAYOUT – 82 CKT

FRONT SIDE

DATUM **A** IS THE OPPOSITE SIDE OF THE PCB



BACK SIDE

DATUM **A** IS THE OPPOSITE SIDE OF THE PCB

NOTES:

- PIN NUMBERING IS FOR REFERENCE ONLY. OTHER PIN NUMBERS WILL NOT AFFECT THE OPERATION OF THE CONNECTOR.
- EDGE CARD SHOULD STOP ON RECEPTACLE SHOULDERS. EDGE CARD BOTTOM DOES NOT CONTACT RECEPTACLE PCB.
- PAD SET BACK FROM CHAMFER ENOUGH TO ACCOMMODATE LARGEST CHAMFER WITHOUT DAMAGE TO PAD EDGE.
- CHAMFER DEPTH SHOULD BE AS LARGE AS PRACTICAL TO ENSURE CORRECT MATING TO THE RECEPTACLE.
- ALL CHAMFERED EDGES SHOULD BE ROUNDED WHERE POSSIBLE.
- INTERNAL PLATING BRIDGES ARE PREFERRED TO ELIMINATE PAD STUB.

SEE SHEET 1 EC NO: UCP2015-5331 DRAWN: JB INGHAM 2015/08/24 CHKD: DMC GOWAN 2015/08/24 APPR: DMC GOWAN 2015/09/18	QUALITY SYMBOLS ▽=0 ▽=0 ▽=0	GENERAL TOLERANCES (UNLESS SPECIFIED)		DIMENSION STYLE MM ONLY		SCALE 6:1	DESIGN UNITS METRIC	THIRD ANGLE PROJECTION	
		mm		INCH		DRAWN BY JB INGHAM		DATE 2014/11/11	
		4 PLACES ± ---		± ---		CHECKED BY DMC GOWAN		DATE 2014/11/11	
		3 PLACES ± ---		± ---		APPROVED BY DMC GOWAN		DATE 2015/01/26	
2 PLACES ± 0.13		± ---		MATERIAL NO.		DOCUMENT NO. SD-171450-3000		SHEET NO. 8 OF 8	
1 PLACE ± 0.25		± ---		SEE CHART		THIS DRAWING CONTAINS INFORMATION THAT IS PROPRIETARY TO MOLEX INCORPORATED AND SHOULD NOT BE USED WITHOUT WRITTEN PERMISSION			
0 PLACE ± ---		± ---		ANGULAR ± 1/2°					
				DRAFT WHERE APPLICABLE MUST REMAIN WITHIN DIMENSIONS					