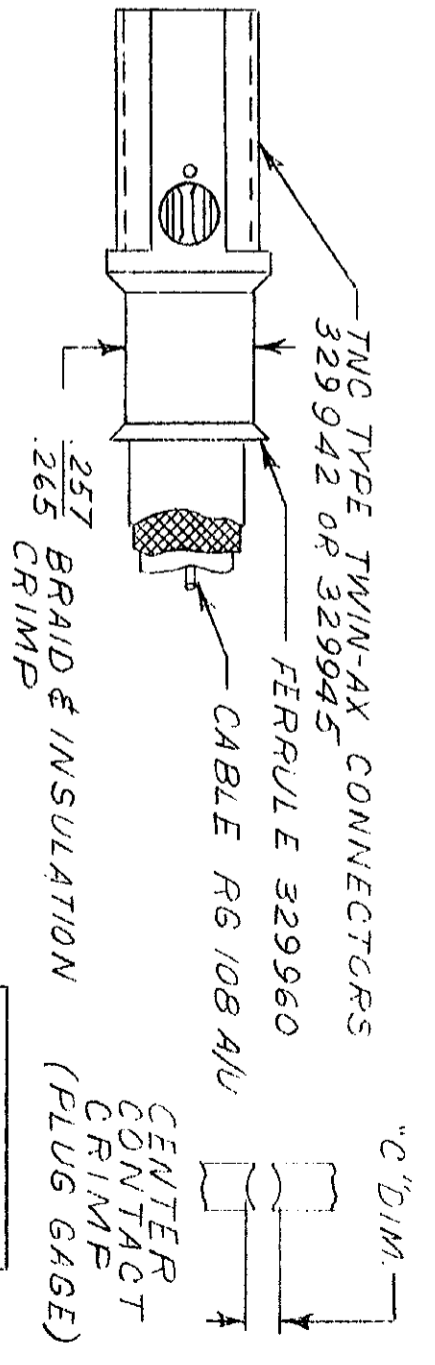
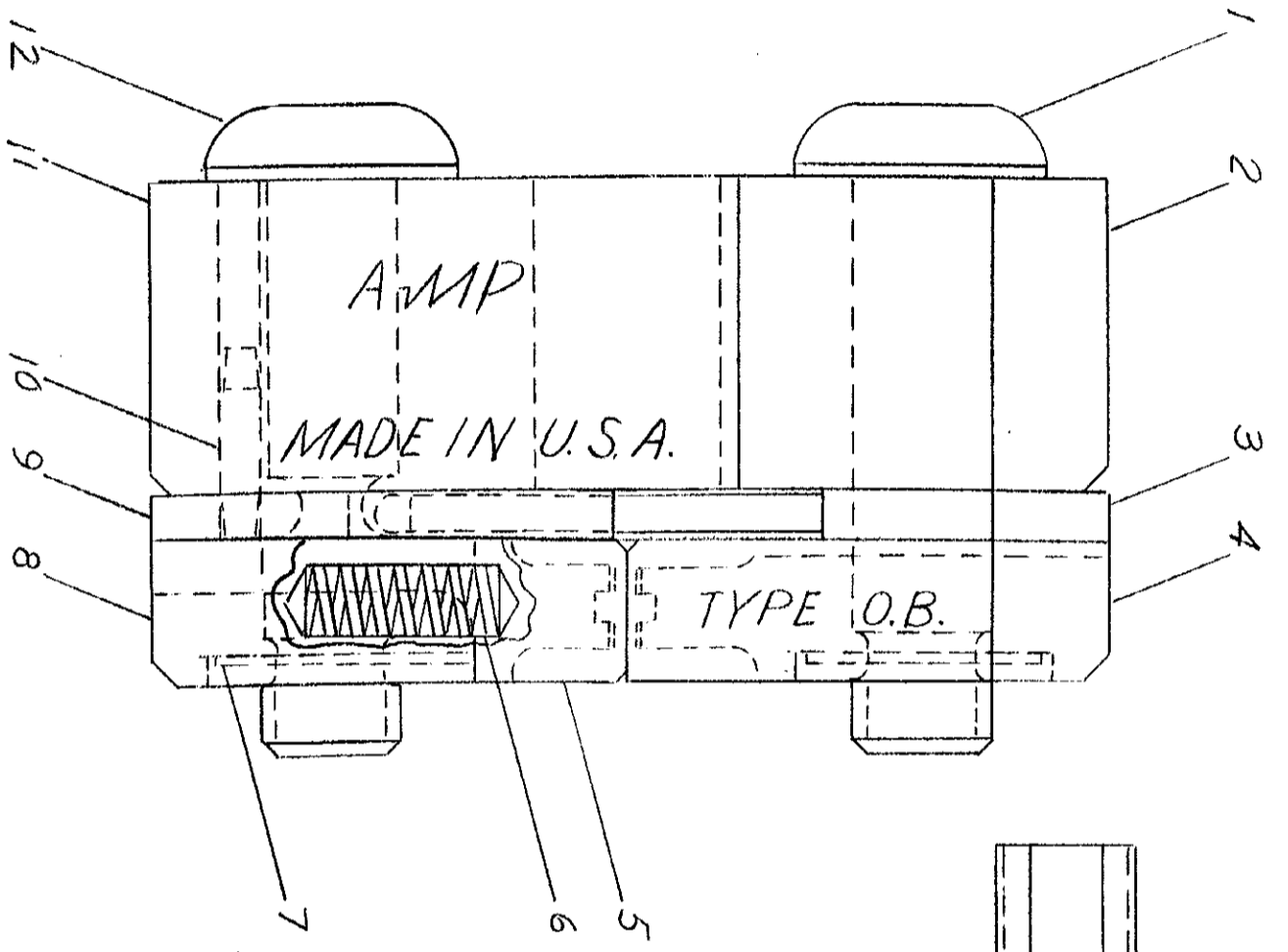
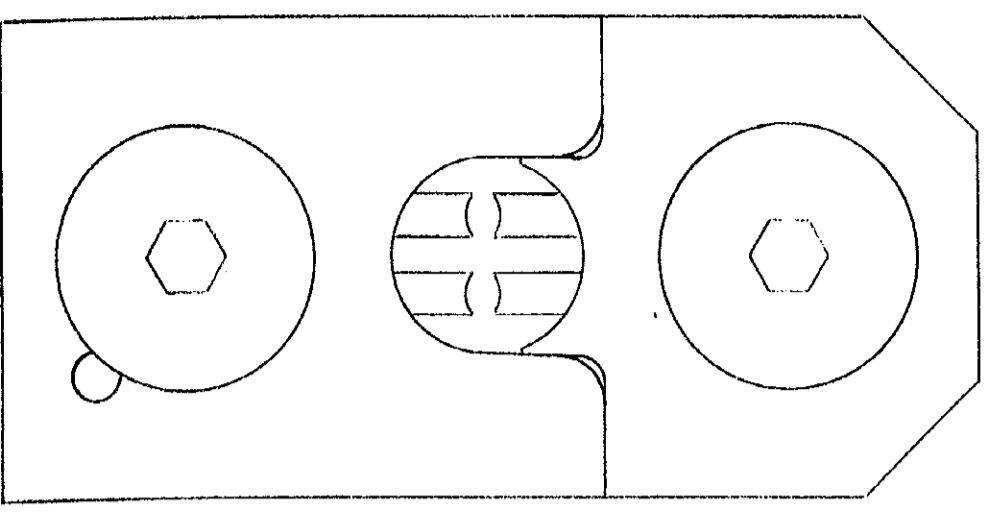


PRINT DIST

DIMENSIONS IN INCHES. DO NOT SCALE PRINT



METHOD OF GAGING CRIMP DIMENSIONS

THE CRIMP DIMENSIONS APPLY ONLY TO THE ABOVE COMBINATIONS ON A CRIMPED PRODUCT

"C" DIM.	
GO	NO GO
.040	.044

SUPERSEDED BY U.S. 1933-3

1	4-306131-4	SCREW-SPECIAL	12
1	1-306540-8	INDENTER-INSULATION	11
1	21028-2	PIN-SLOTTED	10
1	9-305832-8	SPACER-SPECIAL	9
1	306543-3	BARREL-BLOCK	8
2	1-21046-3	RING-RETAINING	7
2	305182	SPRING	6
1	306545	INSERT-BARREL-LOWER	5
1	306201	INSERT-BARREL-UPPER	4
1	2-306113-3	EJECTOR	3
1	1-306539-8	ANVIL-INSULATION	2
1	4-306131-3	SCREW-SPECIAL	1

REVISION RECORD		DR		CHK		DATE	
LTR	NO	BY	DATE	BY	DATE	BY	DATE
A	5	SRP	8/15/65	SRP	8/15/65	SRP	8/15/65
NUMBER 69410-1 DESCRIPTION 69410-1 DR G. J. Ziegler 11-10-65 CHK G. J. Ziegler 11-10-65 DE G. J. Ziegler 11-10-65 NAME G. J. Ziegler 11-10-65							
MATERIAL AND FINISH				CLASS			
WIRE - RANGE - INSULATION				TYPE			
RG-108 A/U				O.B. TWIN COAX			
TOLERANCE EXCEPT AS NOTED ± .015				SCALE 4-1			
LOC M				NO B			
NAME DIE ASSEMBLY				REV A			
REMARKS CUSTOMER COPY REFERENCE ONLY AMP INCORPORATED HARRISBURG, PENNA.							