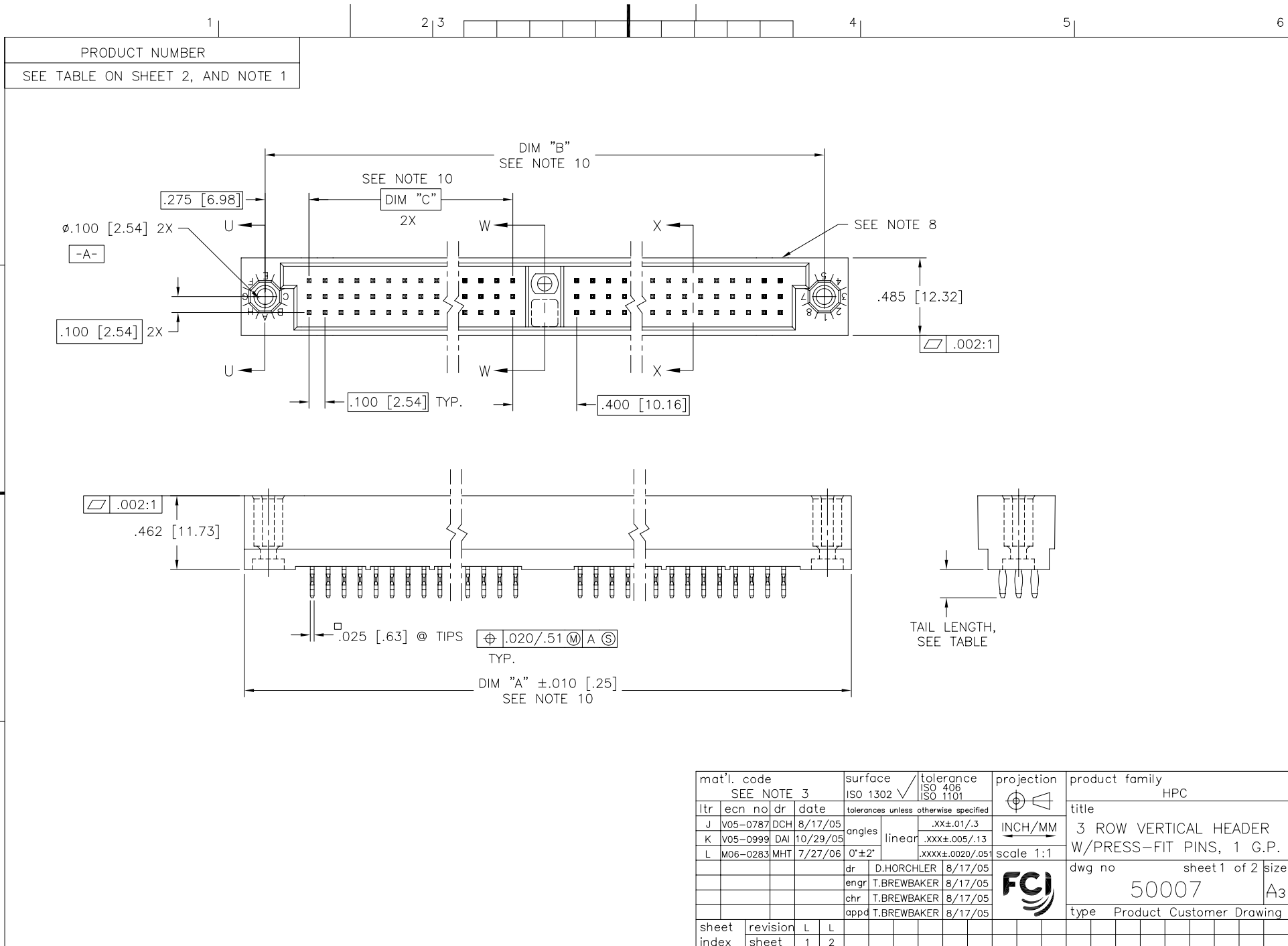


Copyright FCI  
 FCIconnect.com

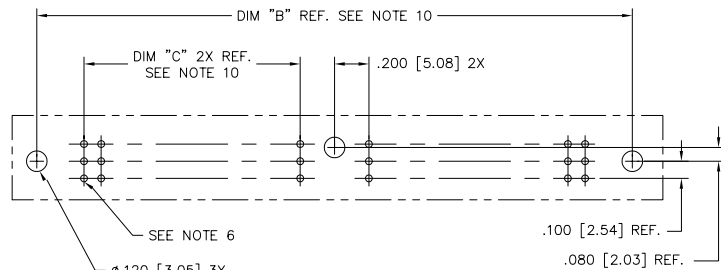


mat'l. code SEE NOTE 3		surface ISO 1302 ✓		tolerance ISO 406 ISO 1101		projection ⊕		product family HPC	
ltr	ecm no	dr	date	tolerances unless otherwise specified		INCH/MM		title	
J	v05-0787	DCH	8/17/05	angles	linear	.xx±.01/.3		3 ROW VERTICAL HEADER	
K	v05-0999	DAI	10/29/05			.xxx±.005/.13		W/PRESS-FIT PINS, 1 G.P.	
L	M06-0283	MHT	7/27/06	0'±2'		.xxxx±.0020/.051		scale 1:1	
		dr	D.HORCHLER	8/17/05				dwg no	
		enr	T.BREWBAKER	8/17/05	sheet 1 of 2 size				
		chr	T.BREWBAKER	8/17/05	50007 A3				
		appd	T.BREWBAKER	8/17/05	type Product Customer Drawing				
sheet index	revision sheet	L	L						
		1	2						

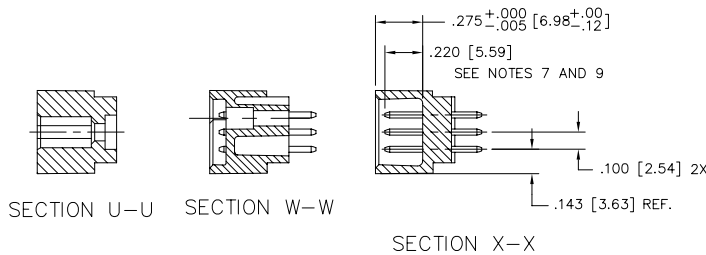
PRODUCT NUMBER	TERMINAL PLATING	TAIL LENGTH ±.015/.38
50007-1YYA	30u"/0.76u Au	.177/4.50
50007-1YYC	30u"/0.76u Au	.533/13.54
50007-1YYD	30u"/0.76u Au	.733/18.62
50007-1YYG	30u"/0.76u Au	.250/6.35
50007-1YYL	30u"/0.76u Au	.188/4.78 FOR .062" PCB
50007-1YYP	30u"/0.76u Au	.470/11.94 FOR .062" PCB/SHROUD
50007-3YYA	50u"/1.27u Au	.177/4.50
50007-3YYC	50u"/1.27u Au	.533/13.54
50007-3YYD	50u"/1.27u Au	.733/18.62
50007-3YYG	50u"/1.27u Au	.250/6.35
50007-3YYL	50u"/1.27u Au	.188/4.78 FOR .062" PCB
50007-3YYP	50u"/1.27u Au	.470/11.94 FOR .062" PCB/SHROUD
50007-5YYA	30u"/0.76u GXT	.177/4.50
50007-5YYALF	30u"/0.76u GXT	.177/4.50
50007-5YYC	30u"/0.76u GXT	.533/13.54
50007-5YYCLF	30u"/0.76u GXT	.533/13.54
50007-5YYD	30u"/0.76u GXT	.733/18.62
50007-5YYDLF	30u"/0.76u GXT	.733/18.62
50007-5YYG	30u"/0.76u GXT	.250/6.35
50007-5YYGLF	30u"/0.76u GXT	.250/6.35
50007-5YYL	30u"/0.76u GXT	.188/4.78 FOR .062" PCB
50007-5YYLLF	30u"/0.76u GXT	.188/4.78 FOR .062" PCB
50007-5YYP	30u"/0.76u GXT	.470/11.94 FOR .062" PCB/SHROUD
50007-5YYPLF	30u"/0.76u GXT	.470/11.94 FOR .062" PCB/SHROUD

NOTES:

- ① PRODUCT NUMBERING CODE:  
 50007 - X YYY Z LF  
 LEAD FREE (OPTIONAL)  
 TAIL LENGTH SEE TABLE  
 NO. OF POSITIONS SEE NOTE 2  
 PLATING SEE TABLE  
 BASE NUMBER
  
- PRODUCT NUMBERING CODE FOR  
 SELECT LOAD PART NUMBERS:  
 50007 - XYYY LF  
 LEAD FREE (OPTIONAL)  
 SEQUENCE NUMBER  
 ALWAYS 'XX'  
 BASE NUMBER
  
- ② THIS PRODUCT IS CONFIGURED IN SIZES OF 20 thru 122 COLUMNS IN INCREMENTS OF TWO.  
 i.e.: 20,22,24,26,.....118,120,122.
- ③ HOUSING MATERIAL: GLASS AND MINERAL FILLED HIGH TEMP. THERMOPLASTIC. FLAME RETARDANT PER UL94V-0. COLOR: BLACK.  
 PIN MATERIAL: PHOS BRONZE
4. THIS PRODUCT ( WITH "LF" SUFFIX ) MEETS EUROPEAN UNION DIRECTIVES AND OTHER COUNTRY REGULATIONS AS DESCRIBED IN GS-22-008.
5. THIS HOUSING WILL WITHSTAND EXPOSURE TO 260 DEGREES C PEAK TEMPERATURE FOR 10-30 SECONDS IN A CONVECTION, INFRA-RED OR VAPOR PHASE OVEN.
- ⑥  $\phi$ .0453/1.151 DRILLED HOLE PLATED WITH .0003/.007 MIN. SnPb OVER .001/.03 to .003/.08 Cu. PLATING TO ACHIEVE A  $\phi$ .040±.003/1.02±.08 HOLE.
- ⑦ TO ASSURE PROPER INSTALLATION: TOOLING, AS SPECIFIED IN INSTRUCTION MANUAL 155915-001 MUST BE USED. PIN MATING LENGTH WILL BE ±.002/.05 AFTER INSTALLATION.
- ⑧ COMPANY NAME, PART NUMBER AND LOT CODE TO APPEAR ON THIS SURFACE PER BUS-12-108.
9. REFERENCE 50808 FOR F.M.L.B. AVAILABLE OPTIONS AND WORKSHEET.
- ⑩ LENGTH DIMENSION FORMULAS:  
 DIM "A" = .100/2.54 x NO. OF COLUMNS + 1.05/26.7  
 DIM "B" = .100/2.54 x NO. OF COLUMNS + .750/19.05  
 DIM "C" = .100/2.54 x NO. OF COLUMNS - .100/2.54



RECOMMENDED PCB LAYOUT  
 (ALL HOLES LOCATED ON .100/2.54 GRID  
 UNLESS OTHERWISE SPECIFIED)



mat'l. code SEE NOTE 3		surface ISO 1302 ✓	tolerance ISO 406 ISO 1101	projection INCH/MM	product family HPC
ltr	ecn	no	dr	date	tolerances unless otherwise specified
L					angles linear .xx±.01/.3 .xxx±.005/.13 .xxxx±.0020/.05
					0°±2'
			dr	D.HORCHLER	8/17/05
			enrg	T.BREWBAKER	8/17/05
			chr	T.BREWBAKER	8/17/05
			appd	T.BREWBAKER	8/17/05
sheet	revision				
index	sheet				
					title 3 ROW VERTICAL HEADER W/PRESS-FIT PINS, 1 G.P.
					dwg no 50007
					sheet 2 of 2 size A3
					type Product Customer Drawing