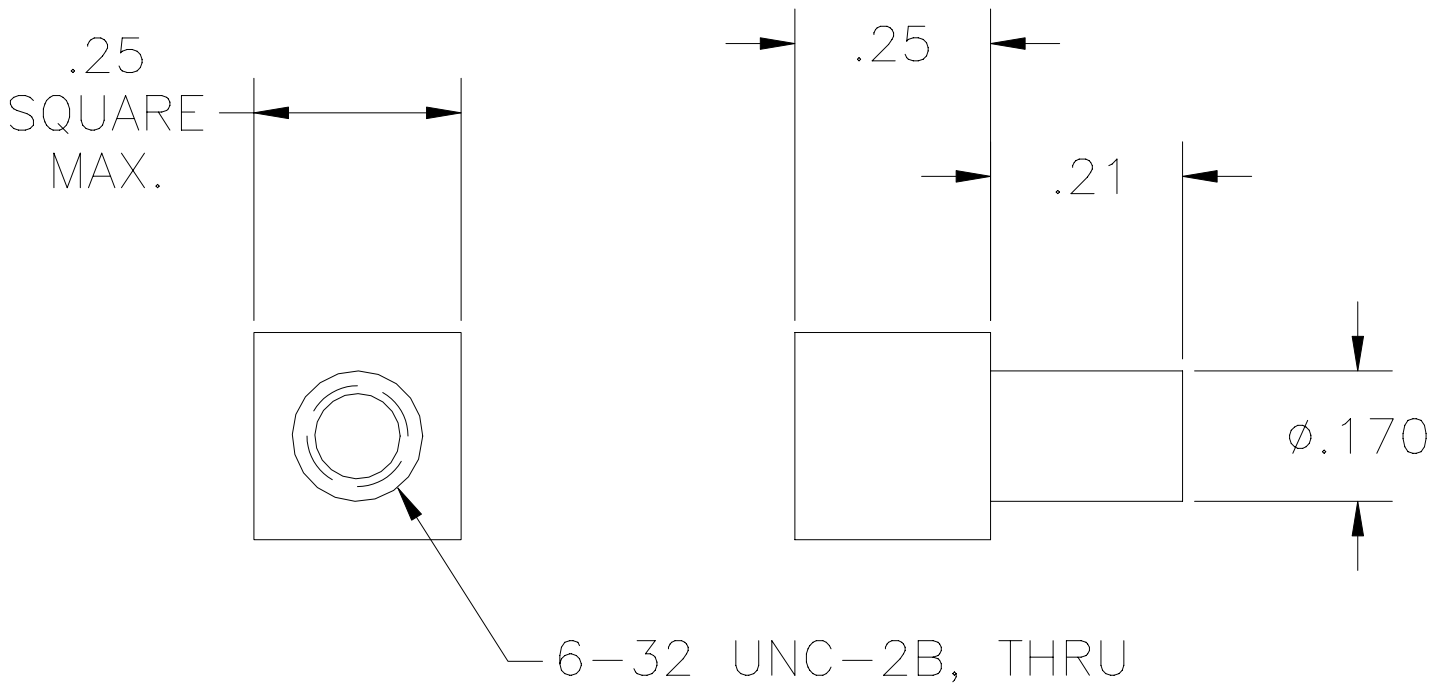


REVISIONS			
LTR	DESCRIPTION	DATE	APPROVED
C	REVISED PER ECN T-21393	14APR97	T.SEATON

NOTES:

- PART USED WITH MTC100-XXX-XXX RECEPTACLE ASSEMBLIES.
- $\triangle$  WEIGHT: .0037 LBS. [1.678 gr.] MAX.
- MATERIAL: STAINLESS STEEL PER QQ-S-763.
- FINISH: CADMIUM PLATED PER QQ-P-416.



SPECIFICATION CONTROL DRAWING

If this document is printed it becomes uncontrolled.  
Check with the web for latest revision.

UNLESS OTHERWISE SPECIFIED DIMENSIONS ARE IN INCHES. METRIC DIMENSIONS ARE IN BRACKETS.  DECIMALS .XXX ± .005 [ mm ] .XX ± .01 [ mm ] ANGLES .X ± WEIGHT $\triangle$ lbs [ g ]	DRAWN	LUTTICAN	10-2-89	<i>Raychem</i> RAYCHEM CORPORATION 300 CONSTITUTION DRIVE MENLO PARK, CALIFORNIA 94025			
	CHECKED						
	APPROVED	BLAIR	10-2-89	TITLE NUT, ADAPTER CADMIUM PLATED MTC SERIES			
	APPROVED						
	CAD NAME T21393			SIZE	CODE IDENT. NO.	DWG. NO.	REV
	THIRD ANGLE PROJECTION			A	06090	CHA-0095	C
				DO NOT SCALE THIS DRAWING		SHEET 1 OF 1	