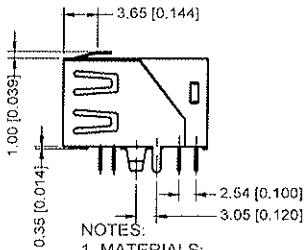
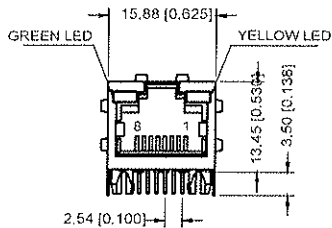
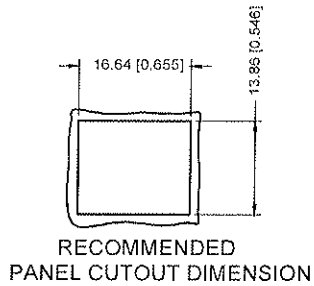
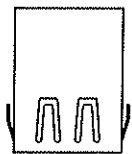


TOLERANCE UNLESS OTHERWISE SPECIFIED IN MM:  
 0 ± 0.50 ANGLE 3°  
 0.0 ± 0.38  
 0.00 ± 0.25  
 0.000 ± 0.10

THIS IS A C.A.D. GENERATED DRAWING  
 DO NOT MAKE MANUAL REVISIONS TO MASTER.

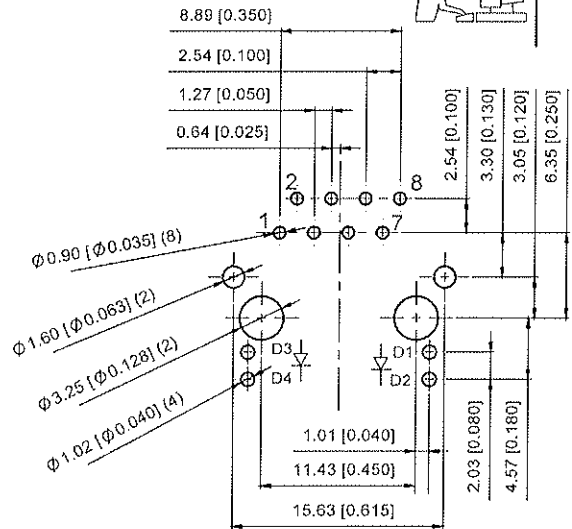
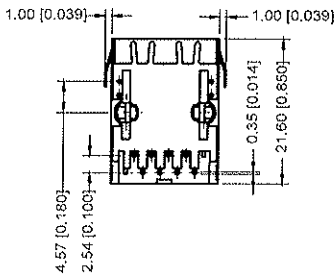
ISSUE NUMBER  
 ORIGINAL



NOTES:  
 1. MATERIALS:  
 HOUSING: HIGH TEMPERATURE NYLON, UL94 V-0, COLOR: BLACK  
 CONTACTS: 0.35MM PHOSPHOR BRONZE PLATED WITH  
 GOLD PLATING AND TIN IN SOLDER AREA

PART NO	GOLD PLATING THICKNESS
A64-112-231N411	GOLD FLASH PLATING
A64-113-231N411	15 MICRO INCHES OF GOLD
A64-114-231N411	30 MICRO INCHES OF GOLD

- SHIELD: 0.20MM COPPER ALLOY WITH NICKEL PLATING  
 2. OPERATING TEMPERATURE: 0°C TO +70°C  
 3. MATE WITH MODULAR PLUG CONFORMING TO  
 FCC PART 68, SUBPART F.  
 4. DIMENSION: MM [INCHES]



RECOMMENDED P.C.B. LAYOUT  
 TOLERANCE: ±0.05[±0.002]

RJ45 MAGNETIC JACK WITH LED, 8P, 8C  
 SHIELDED/10/100 Mbps FILTER

ACAD REFERENCE NO.: A64-112-231N411

DRAWN R. STA. MONICA DATE: JAN. 24/2011

CHECKED: DATE:

PART NUMBER

SEE NOTE

SHEET 1 OF 2

DRAWING NUMBER

A64-112-231N411

ISSUE

1



THIS SERIES FULLY CONFORMS TO THE  
 EUROPEAN UNION DIRECTIVES 2002/95/EC  
 AND 2002/96/EC FOR RoHS COMPLIANCE.



EDAC INC  
 TORONTO, ONTARIO  
 CANADA

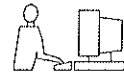
YOUR CONNECTION TO QUALITY & SERVICE

THESE DRAWINGS AND SPECIFICATIONS  
 ARE THE PROPERTY OF EDAC INC. AND  
 SHALL NOT BE REPRODUCED, OR COPIED  
 OR USED AS THE BASIS FOR THE  
 MANUFACTURE OR SALE OF APPARATUS  
 WITHOUT WRITTEN PERMISSION.

ELECTRICAL CIRCUIT:

TOLERANCE UNLESS OTHERWISE SPECIFIED IN MM:  
 0 ± 0.50 ANGLE 3°  
 0.0 ± 0.20  
 0.09 ± 0.25  
 0.000 ± 0.10

THIS IS A C.A.D. GENERATED DRAWING  
 DO NOT MAKE MANUAL REVISIONS TO MASTER.



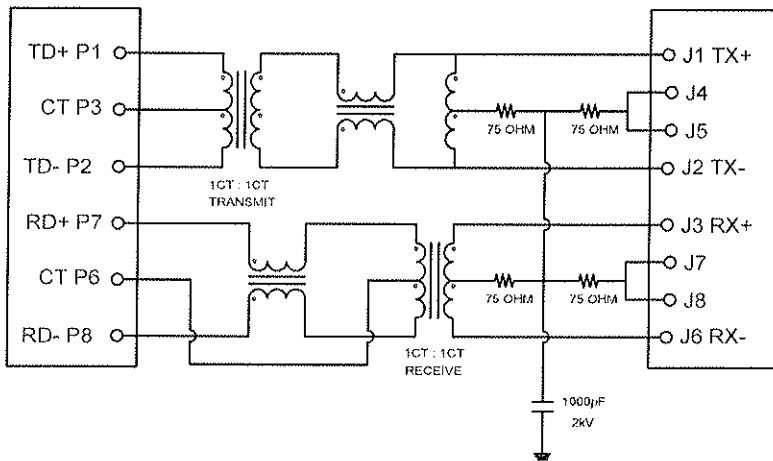
ISSUE NUMBER  
 ORIGINAL ①

TEST NOTES:(25±5°C)

- 1.TR:(100KHz,0.1V);  
 PINS:(P1-P2):(J1-J2)=1:1±3%  
 PINS:(P7-P8):(J3-J6)=1:1±3%
- 2.LX:(100KHz,100mV,8mA, DC Bias)  
 PINS:(P1,P2),(P7,P8)=350uH MINIMUM
- 3.DCR:  
 PINS:(P1-P2),(J1-J2),(J3-J6)= 1.0 OHMS MAXIMUM  
 PINS:(P7-P8)= 1.2 OHMS MAXIMUM
- 4.HIPOT:  
 PINS(P7,P6,P8)TO(J3,J6)=1500VAC FOR 2 SECONDS  
 PINS(P1,P3,P2)TO(J1,J2)=1500VAC FOR 2 SECONDS
- 5.INSERTION LOSS:  
 -1.0dB MAXIMUM AT 1MHz TO 100MHz;
- 6.RETURN LOSS:  
 -20dB MINIMUM AT 1MHz TO 30MHz;  
 -15dB MINIMUM AT 30MHz TO 60MHz  
 -10dB MINIMUM AT 60MHz TO 80MHz
- 7.CROSS TALK:  
 -30dB MINIMUM AT 1MHz TO 100MHz
- 8.COMMON TO COMMON MODE REJECTION:  
 -30dB MINIMUM AT 1MHz TO 100MHz

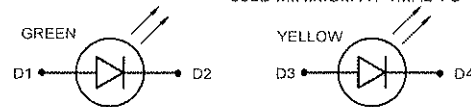
CONNECTOR SOLDER SIDE

RJ45 CONTACT SIDE



Color	Lens Color	Vf(v) @20mA		Iv(mcd) @10mA		Viewing angle 2θ 1/2
		Min	Max	Min	Typ	
Yellow	Yellow Diffused	1.7	2.8	3.0	6.0	116
Green	Green Diffused	1.7	2.8	3.5	6.0	116

LED CIRCUIT:



RJ45 MAGNETIC JACK WITH LED, 8P, 8C  
 SHIELDED/10/100 Mbps FILTER



THIS SERIES FULLY CONFORMS TO THE EUROPEAN UNION DIRECTIVES 2002/95/EC AND 2002/96/EC FOR RoHS COMPLIANCY.



EDAC INC  
 TORONTO, ONTARIO  
 CANADA

YOUR CONNECTION TO QUALITY & SERVICE

THESE DRAWINGS AND SPECIFICATIONS ARE THE PROPERTY OF EDAC INC. AND SHALL NOT BE REPRODUCED OR COPIED OR USED AS THE BASIS FOR THE MANUFACTURE OR SALE OF APPARATUS WITHOUT WRITTEN PERMISSION.

ACAD REFERENCE NO.: A64-112-231N411

DRAWN:R.STA.MONICA DATE: JAN.24/2011

CHECKED: DATE:

PART NUMBER

SEE NOTE

DRAWING NUMBER  
 A64-112-231N411

ISSUE  
 1