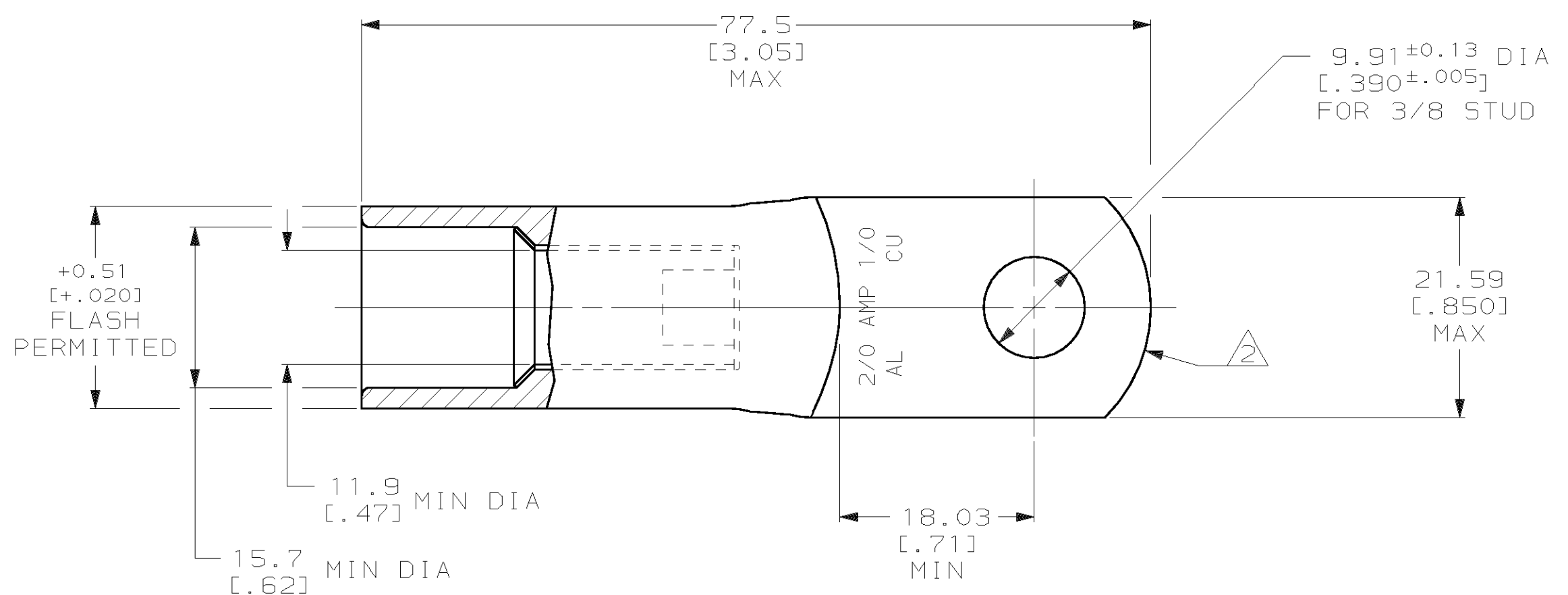


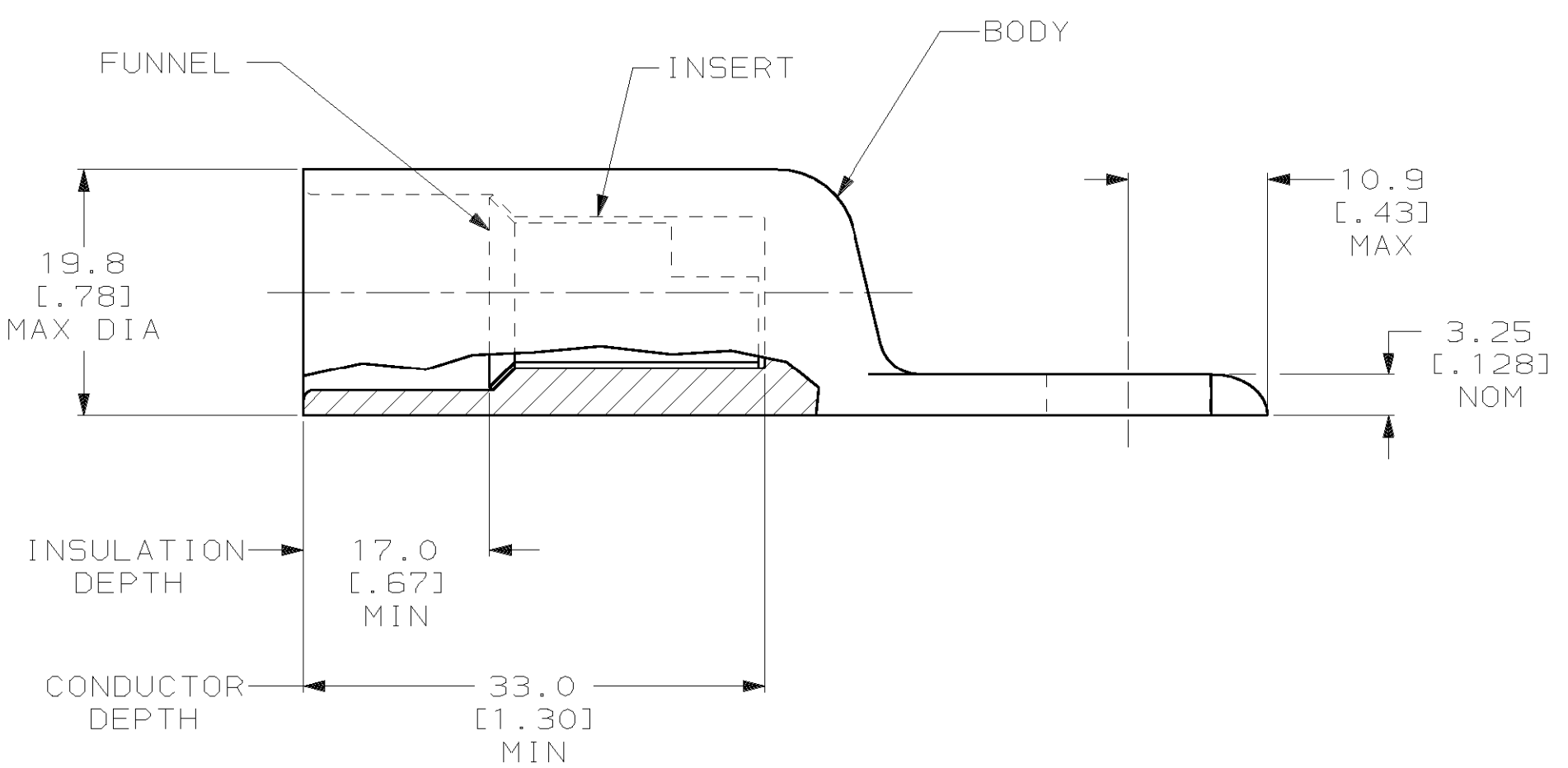
THIS DRAWING IS UNPUBLISHED. RELEASED FOR PUBLICATION  
 © COPYRIGHT 19 BY AMP INCORPORATED. ALL INTERNATIONAL RIGHTS RESERVED.

LOC		DIST		P		F		REVISIONS				
G		86						ZONE	LTR	DESCRIPTION	DATE	APPD
								B		REV PER 0G3A-0828-00	09JAN01	3 <sup>RD</sup> MS



1 WIRE INSULATION: 12.70 [.500] - 13.97 [.550] DIA

△ THE TONGUE RADIUS FEATURE IS NOT A TOOLING CONTROLLED DIMENSION AND MAY NOT BE A TRUE RADIUS.



INSERT & FUNNEL: BRASS MIL-C-50 NICKEL PL PER QQ-N-290 0.00762 [.000300] AVG THK BODY: COPPER ASTM-B187 ANNEALED TIN PL PER MIL-T-10727 0.00381 [.000150] MIN THK	55944-1
--	---------

MATERIAL & FINISH		PART NO			
DO NOT SCALE PRINT. UNLESS SPECIFIED DIMENSIONS IN mm [INCHES] TOLERANCES ON:	DR 4/29/93 DK SCHRUM	<b>AMP</b> AMP Incorporated Harrisburg, PA 17105-3608			
2 PLC DEC ± -	CHK 5/5/93 WJ VOCKROTH				
3 PLC DEC ± -	APPD 5/5/93 RE ROSER	NAME TERMINAL, RING TONGUE, COPALUM™, SEALED, WIRE SIZE: 71.3mm <sup>2</sup> [2/0] ALUMINUM 53.9mm <sup>2</sup> [1/0] COPPER			
ANGLES ± -	APPD 5/5/93 CR RHODS				
MATERIAL SEE TABLE	PRODUCT SPEC 108-11011 TENTATIVE	SIZE	CAGE CODE 00779	DRAWING NO	C=55944
FINISH SEE TABLE	APPLICATION SPEC 114-2134	SCALE	2:1	SHEET	1 OF 1
	WEIGHT 75.0±5.0 GRAMS				

THIS DRAWING IS A CONTROLLED DOCUMENT FOR AMP INCORPORATED. IT IS SUBJECT TO CHANGE AND THE CONTROLLING ENGINEERING ORGANIZATION SHOULD BE CONTACTED FOR THE LATEST REVISION.