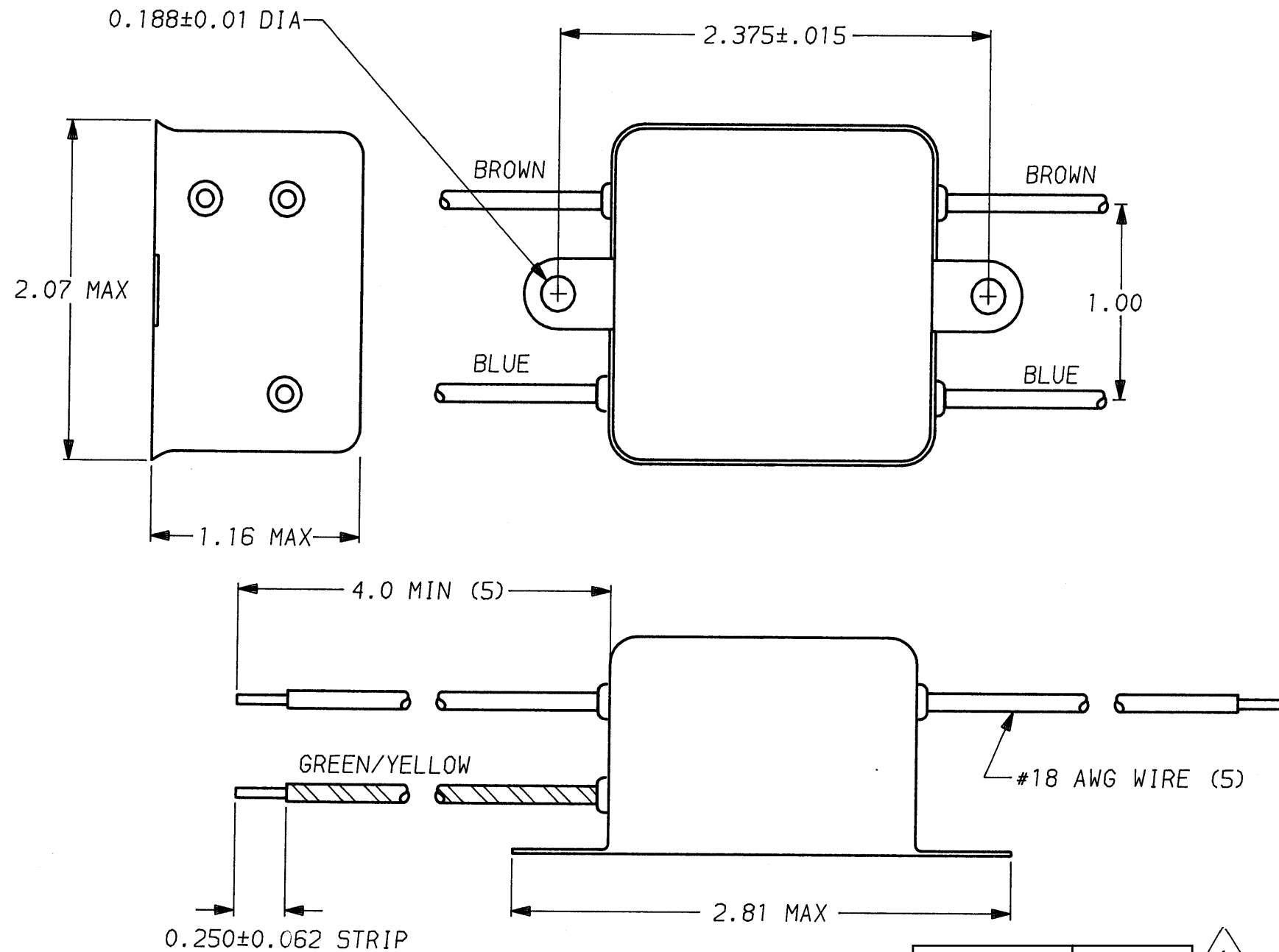


DESCRIPTION	APPROVED BY	DATE	REV
	C. Westaby	11-30-90	0
ECO-09-026495	AEG	10DEC09	1



**SAFETY ORGANIZATION(S):**

THIS FILTER HAS BEEN FORMALLY RECOGNIZED, CERTIFIED OR APPROVED BY THE LISTED AGENCY. THEREFORE, ALL TEST/REQUIREMENTS SPECIFIED IN THE LATEST REVISION OF THE FOLLOWING AGENCY STANDARDS HAVE BEEN MET:

UL RECOGNIZED  
 CSA CERTIFIED (PENDING)  
 VDE APPROVED (PENDING)

OPERATING SPECIFICATIONS:  
 LINE VOLTAGE/CURRENT:  
 LINE FREQUENCY:  
 MAX. LEAKAGE CURRENT, EACH  
 LINE TO GROUND  
 OPERATING AMBIENT TEMP. RANGE:

UL 1283  
 CSA 22.2, NO.0,0.4,8  
 VDE 565-3

1 AMP., 120/250 VAC  
 1 AMP./40°C, 250 VAC  
 50-60Hz

.35 mA @ 120V 60 Hz  
 .59 mA @ 250V 50 Hz  
 -10°C TO +40°C @ RATED CURRENT, I<sub>r</sub>

IN AN AMBIENT, T<sub>a</sub>, HIGHER THAN 40°C, THE MAXIMUM OPERATING CURRENT, I<sub>o</sub>, IS AS FOLLOWS:

$$I_o = I_r \sqrt{\frac{85 - T_a}{45}}$$

**RELIABILITY SPECIFICATIONS:**

STORAGE TEMPERATURE: -40°C TO +85°C  
 HUMIDITY: 21 DAYS @ 40°C 95% RH  
 CURRENT OVERLOAD TEST: 6 TIMES RATED CURRENT FOR 8 SECONDS

**TEST SPECIFICATIONS:**

INDUCTANCE: 1.86 mH NOMINAL  
 CAPACITANCE: (MEASURED @ 1 KHz, 0.25 VAC MAX., 25°C ±1°C)  
 LINE TO GROUND: .0047µF ±20%  
 LINE TO LINE: .81µF ±20%  
 DISCHARGE RESISTOR 330KΩ  
 LINE/GROUND AND LINE/LINE 6000 MΩ (MIN) AT 100 VDC  
 INSULATION RESISTANCE 20°C AND 50% RH

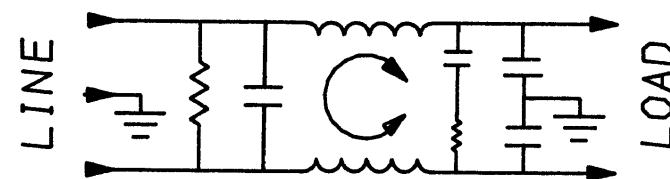
**RECOMMENDED RECEIVING INSPECTION HIPOT:**

LINES TO GROUND: 2250 VDC FOR 1 MINUTE  
 LINE TO LINE: 1450 VDC FOR 1 MINUTE

**FILTER APPROVAL:**

THE BEST WAY TO SELECT AND QUALIFY A FILTER IS FOR YOUR ENGINEERING TO TEST THE UNIT IN YOUR EQUIPMENT.

~~1609034-2~~ OBSOLETE 1  
 6609034-2



1 OBSOLETE PARTS: OBSOLETE CIS STREAMLINING PER D.RENAUD/D.SINISI

		50Ω - 50Ω (MINIMUM) INSERTION LOSS							
FREQUENCY MHz		.15	.5	1	2	5	10	20	30
COMMON dB		18	33	43	48	48	48	50	40
DIFF. dB		25	58	68	68	65	50	50	50

This document is proprietary to CORCOM INC. and is not to be reproduced nor used for manufacturing purposes except on CORCOM's order or prior written consent.

TOLERANCE EXCEPT AS NOTED  
 DECIMAL: .XXX .XX .X ANGLES ± 1°  
 ENGLISH: ± .025  
 METRIC: ± —  
 MATERIAL: AS SUPPLIED  
 FINISH: AS SUPPLIED



POWER LINE FILTER		SCALE	DATE	DRG. NO.	REV.
		NTS	11-5-90	1 VDK3.	1
DRW. BY	ORIGINATOR				
CFW	CFW				