

ATLANTIC VERSION TERMINATOR INTERFACE ADAPTER	PART NUMBER	REVISION	DESCRIPTION	FEED TYPE	CONVERT TO	PART NUMBERS REQUIRED					
	2150008-1	C	FINE CRIMP HEIGHT ADJUST	MECHANICAL	PNEUMATIC FEED	2119950-1	2119792-2	-	2119641-1	-	2063440-1
					SERVO LATCH PLATE	2119951-1	1901697-1	8-2150008-5	-	2168400-7 (QUANTITY 2)	
					SMART APPLICATOR	2161326-1	-	8-2150008-4	-	-	
	2150008-2	C	FINE CRIMP HEIGHT ADJUST	PNEUMATIC	MECHANICAL FEED	2119949-1	2063961-1	5-18022-5	2119653-1	-	-
					SERVO LATCH PLATE	2119951-1	1901697-1	8-2150008-5	-	2168400-7 (QUANTITY 2)	
					SMART APPLICATOR	2161326-1	-	8-2150008-4	-	-	
	2150008-5	C	FINE CRIMP HEIGHT ADJUST	SERVO LATCH PLATE	MECHANICAL FEED	2119949-1	2063961-1	5-18022-5	2119653-1	-	-
					PNEUMATIC FEED	2119950-1	2119792-2	-	2119641-1	-	2063440-1
	2150008-6	C	NON-CRIMP HEIGHT ADJUST	SERVO LATCH PLATE	-	-	-	-	-	-	-
	2150008-7	C	FINE CRIMP HEIGHT ADJUST	NONE	-	-	-	-	-	-	-
	7-2150008-7	A	CRIMP TOOLING KIT	-	-	-	-	-	-	-	-

APPLICATOR DATA		
CRIMP SIZE	TYPE	
WIRE 3.30 mm [.130]	F	
INSUL 4.57 mm [.180]	F	
APPLICATOR INSTRUCTIONS 408-10390		

TERMINAL DATA: TE TERMINAL		TE CRIMP SPECIFICATION	
TERMINAL NAME: RING TERMINAL			
WIRE STRIP LENGTH	INSULATION DIAMETER RANGE		
5.40-5.70 mm [.213-.224 IN]	Ø2.67-3.68 mm [.105-.145 IN]		
TERMINAL APPLICATION SPECIFICATION	114-2084		
TERMINALS APPLIED			
TE TERMINAL	TE TERMINAL	TE TERMINAL	TE TERMINAL
350436-2	61794-1	61795-1	61795-8
350436-3	61794-4	61795-3	63640-1
350436-4	61794-5	61795-4	640051-1
61793-1	61794-6	61795-5	640052-1
61793-3	61794-8	61795-6	

WIRE SIZE	CRIMP HEIGHT mm [INCH]	CRIMP HEIGHT REFERENCE SETTING
14 AWG	2.18 +/- 0.05 [.086 +/- .002]	6.8
16 AWG	1.98 +/- 0.05 [.078 +/- .002]	8.6
18 AWG	1.85 +/- 0.05 [.073 +/- .002]	10.0

- 1. RECOMMENDED SPARE PARTS
- 2. GREASE BEARING SURFACES LIGHTLY
- 3. LUBRICATE DAILY PER THE APPLICATOR INSTRUCTION SHEET SUPPLIED WITH THE APPLICATOR.
- 4. APPLICATOR SPECIFIC DATA TO BE ENTERED INTO BLANK MEMORY CHIP AT ASSEMBLY. SEE BELOW FOR PART NUMBER:
 MECHANICAL FEED WITH "SMART APPLICATOR" CONVERSION: 8-2150008-4
 PNEUMATIC FEED WITH "SMART APPLICATOR" CONVERSION: 8-2150008-4
 SERVO FEED WITH "FINE CRIMP HEIGHT ADJUST": 8-2150008-5
 SERVO FEED WITH "NON-CRIMP HEIGHT ADJUST": 8-2150008-6
- 5. ADJUSTMENT OF THE STRIPPER MAY BE REQUIRED WHEN MOVING THE APPLICATOR BETWEEN BENCH AND LEADMAKER APPLICATIONS.
- 6. APPLY PART NUMBER 1-23419-5 LOCTITE TO THREADS OF ITEMS 50, 62 & 242. FOR -6 ONLY APPLY PART NUMBER 1-23419-5 LOCTITE TO THREADS OF ITEMS 37, 50 & 242.
- 7. GREASE THREADS, GROOVE AND O-RING ON ITEMS 35 & 252.
- 8. MAGNET, ITEM 166 MUST BE ORIENTED CORRECTLY IN ORDER TO PROPERLY ACTUATE THE COUNTER.
- 9. CRIMP HEIGHT REFERENCE SETTING WAS THE SETTING USED WHEN THE APPLICATOR WAS QUALIFIED AT THE FACTORY. ADJUSTMENT MAY BE NECESSARY WHEN RUNNING APPLICATOR IN THE FIELD.
- 10. SPARE FEED CAM STORAGE LOCATION REFER TO INSTRUCTION SHEET FOR ADDITIONAL INFORMATION.
- 11. THE RECOMMENDED SET-UP FOR END FEED APPLICATORS IS POST-FEED WITH ITEM 2119653-1. THE APPLICATOR CAN BE CONFIGURED FOR PRE-FEED WITH ITEM 2119652-1 BUT MAY ENCOUNTER PROBLEMS WITH SOME APPLICATIONS. FEED ISSUES OR TERMINAL JAMMING MAY OCCUR IN THE PRE-FEED CONFIGURATION.
- 12. WHEN ASSEMBLING -6 NON-CRIMP HEIGHT ADJUST APPLICATOR USE SHIM PACK 2119957-2 TO ALIGN APPLICATOR'S MAXIMUM WIRE CRIMP HEIGHT AT NORMAL TERMINATOR SHUT HEIGHT

***WARNING**
 ON INSTALLATION, SET WIRE DISC, ITEM 40 TO LARGEST WIRE SIZE SETTING. USE OF SETTINGS BELOW MINIMUM REQUIRED CRIMP HEIGHT SETTING WILL CAUSE DAMAGE TO CRIMP TOOLING.

-77	-7	-6	-5	-2	-1	PART NO	DESCRIPTION	ITEM NO
-	-	1	-	-	-	2119957-2	APPLICATOR SHIM PACK	260
-	1	-	1	1	1	8-21084-0	O-RING, .676 ID, .070 DIA. MAT.	252
-	-	-	-	1	-	2119640-1	PUSH ROD, AIR FEED	250
-	-	-	-	1	-	2079988-1	BUSHING, LCH5-12, MISUMI	249
-	-	-	-	1	-	2119641-1	FEED CAM, AIR FEED	248
-	1	-	1	1	1	2119798-1	DETENT PIN	247

ATLANTIC VERSION
 Shown on sheets 1 of 4 & 2 of 4
 (Pacific version shown on sheets 3 of 4 & 4 of 4)

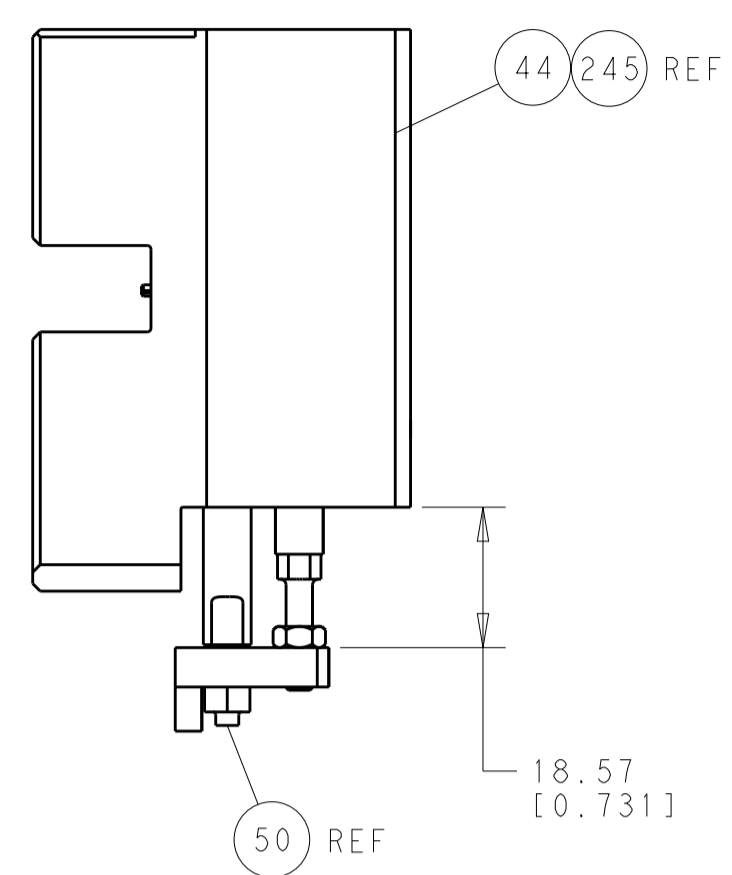
SET UP GAUGE	LOC	DIST	REVISIONS			
2119599-2	A	66	REV	DATE	BY	APPV
	A		RELEASE	20APR2012	L.Z	S.X
	B		ECR-13-001589	28JAN2013	L.Z	S.X
	C		ECR-13-002763	14FEB2013	BW	GB

REV	DATE	DESCRIPTION	DATE	BY	APPV			
-	1	-	1	1	1	1-22279-3	SPRING, COMPRESSION	246
-	-	1	-	-	-	2119759-1	RAM, AMP STYLE, END FEED, NON-ADJUST	245
-	1	1	1	1	1	2119082-9	CAM, SNAIL, INSULATION ADJUSTMENT	244
-	1	1	1	1	1	2079764-1	WASHER, WAVE SPRING, CREST-TO-CREST	243
-	1	1	1	1	1	2119083-1	RETAINER, INSULATION DIAL	242
-	-	2	2	-	-	2168400-7	SHCS, LOW HEAD, RoHS, M5 X 10	240
-	-	-	-	-	1	2119580-1	MECHANICAL FEED ASSEMBLY	239
-	-	-	-	1	-	2063440-1	AIR FEED MODULE	238
-	-	1	1	-	-	2119740-2	TAG, IDENTIFICATION	213
-	-	REFREF	-	-	-	1901697-1	FEED FINGER ASSEMBLY, EF	183
-	1	1	1	1	1	6-993111-6	PIN, SLOTTED SPRING 3.0 X 14.0	177
-	1	1	1	1	1	8-22280-7	SPRING, COMPRESSION	176
-	1	1	1	1	1	1752353-2	GUIDE PIN, HOLDDOWN	175
-	1	1	1	1	1	1901680-2	GUIDE PIN, HOLDDOWN	174
-	-	-	-	2	-	21045-3	RING, RETAIN, EXTERN, 3/16 CRESCENT	172
-	1	1	1	1	1	994969-1	MAGNET, RARE EARTH HIGH ENERGY	166
-	REFREF	REFREF	REFREF	REFREF	REFREF	994970-2	COUNTER, MAGNETIC	164
-	-	-	-	1	-	240638-1	SPRING, FEED FINGER	163
-	-	-	-	1	-	3-23627-7	PIN, RETAIN, GRVD, 3/16 X .854	137
-	-	REFREF	-	-	-	-	MEMORY CHIP, PROGRAMMED	135
-	-	1	1	-	-	1633743-1	SERVO FEED LATCH ASM	133
-	1	1	1	1	1	455888-5	SPACER, CRIMPER	82
-	1	1	1	1	1	2119956-2	DOCUMENTATION PACKAGE	71
-	2	2	2	2	2	2-18032-2	SCR, SET, FLT POINT M3 X 10.0	70
-	1	-	-	1	1	2119740-1	TAG, IDENTIFICATION	67
-	2	2	2	2	2	2168078-1	SCREW, DRIVE, RH, RoHS	66
-	1	1	1	1	1	1901681-5	HOLDDOWN, TERMINAL	65
-	1	-	1	1	1	2119793-1	LIMITER, ADJUSTMENT BOLT	63
-	3	-	3	3	3	992763-5	SCR, SET, SOC, CONE POINT, M3 X 4.0	62
-	1	1	1	1	1	2079383-4	SCR, BHSC, RoHS (M4 X 8)	60
-	-	-	-	-	1	5-18022-5	SCR, HEX HD CAP, M4 X 6.0	59
-	-	-	-	-	1	2063961-1	FEED FINGER	58
-	4	4	4	4	4	2168400-4	SHCS, LOW HEAD, RoHS, M4 X 8	57
-	2	2	2	2	2	2168083-3	SCR, SKT HD CAP, RoHS, M4 X 12.0	56
-	2	2	2	2	2	5018030-2	NUT, HEX, REG, RoHS, M4	55
-	2	2	2	2	2	5018030-1	NUT, HEX, REG, RoHS, M3	54
-	2	2	2	2	2	986965-8	NUT, LOCK, HEX, TORQUE (M4)	53
-	1	1	1	1	1	1-5018030-0	NUT, HEX, REG, RoHS, M3.5	52
-	-	-	-	1	-	2119792-2	PAWL, EF, AIR	51
-	1	1	1	1	1	1976055-5	STANDOFF, HOLD-DOWN	50
-	-	-	-	1	2	18023-9	SCR, SKT HD CAP M4 X 6.0	49
-	-	-	-	-	1	2119652-1	FEED CAM, PRE FEED	48
-	-	-	-	-	1	2119653-1	FEED CAM, POST FEED	47
-	1	1	1	1	1	2119655-5	APPLICATOR BASIC ASSEMBLY, EF	46
-	1	-	1	1	1	2119369-1	RAM, AMP STYLE, END FEED	44
-	1	1	1	1	1	2079383-7	SCR, BHSC, RoHS (M8 X 25)	41
-	1	-	1	1	1	2119645-1	DISC, NUMBERED FA WIRE ADJUSTMENT	40
-	1	-	1	1	1	2119957-1	APPLICATOR SHIM PACK	39
-	1	1	1	1	1	2119644-2	RAM WASHER, PRECISION	38
-	1	1	1	1	1	2119085-1	FA HEAD, ATLANTIC STYLE	37
-	1	-	1	1	1	2119092-1	BOLT, ADJUSTMENT	35
-	8	8	8	8	8	1-18028-2	WASHER, FLAT, REG M4	33
-	2	2	2	2	2	2168083-9	SCR, SKT HD CAP, RoHS, M4 X 20	31
-	2	2	2	2	2	1-2168083-0	SCR, SKT HD CAP, RoHS, M4 X 10	29
-	1	1	1	1	1	240639-1	STRIPPER (MACHINING)	27
-	2	2	2	2	2	1320906-1	STUD, THREADED	25
-	1	1	1	1	1	1752371-1	PLATE, STRIP GUIDE	24
-	2	2	2	2	2	2-22281-3	SPRING, COMPRESSION	22
-	1	1	1	1	1	1752373-4	DRAG	20
-	1	1	1	1	1	1-1901696-5	STRIP GUIDE, REAR	19
-	1	1	1	1	1	1-1901695-5	STRIP GUIDE, FRONT	18
-	4	4	4	4	4	1-2079383-1	SCR, BHSC, RoHS (M6 X 12)	17
-	1	1	1	1	1	1752360-1	SPACER, HOLD-DOWN	13
-	1	1	1	1	1	240833-1	PLATE, REAR SHEAR	11
-	-	-	-	-	-	-	-	10
-	1	1	1	1	1	1-690495-5	PLATE, FRONT SHEAR	9
-	1	1	1	1	1	1333221-5	ANVIL, EF .130	8
-	1	1	1	1	1	2217206-4	BLADE, SLUG	7
-	1	1	1	1	1	1-240641-8	SPACER	5
-	1	1	1	1	1	238009-1	BLOCK, FL CRIMPER SPACER	4
-	1	1	1	1	1	2119582-3	CRIMPER, INSULATION F PREMIUM	3
-	1	1	1	1	1	455888-6	SPACER, CRIMPER	2
-	1	1	1	1	1	456410-7	CRIMPER, WIRE PREMIUM	1

DIMENSIONS:	TOLERANCES UNLESS OTHERWISE SPECIFIED:	DRAWN:	DATE:	CHK:	DATE:	NAME:	SCALE:	SHEET:	OF:	REV:
mm	0 PLC ±.05 1 PLC ±.05 2 PLC ±.05 3 PLC ±.05 4 PLC ±.05 ANGLES ±.0001	L. ZHANG	11JAN2012	L. ZHANG	11JAN2012	TE Connectivity Harrisburg, PA 17105-3608	1:1	1	4	C
MATERIAL:	FINISH:	APVD:	S. XI	11JAN2012	PRODUCT SPEC:	Ocean End Feed Applicator	SIZE:	CAGE CODE:	DRAWING NO:	RESTRICTED TO:
							A1	00779	©=2150008	
Customer Accessible Production Drawing										

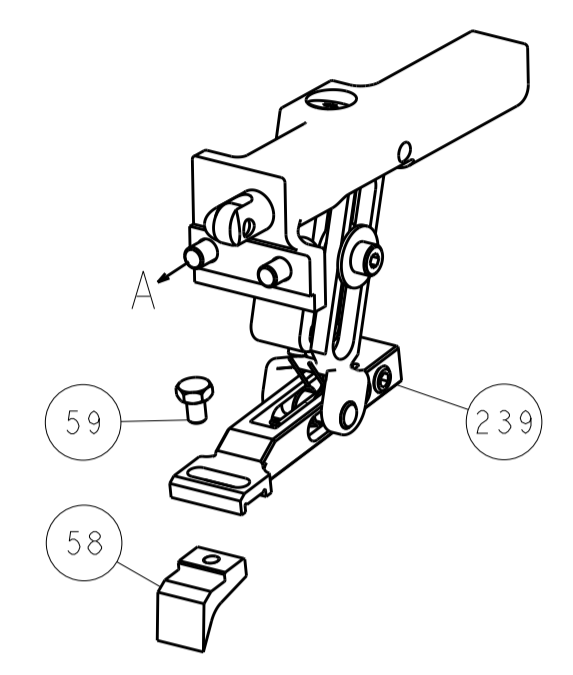
LOC	DIST	REV	DATE	BY	APPV
A	66				

REVISIONS			
REV	DATE	BY	APPV
-	-	-	-
-	-	-	-

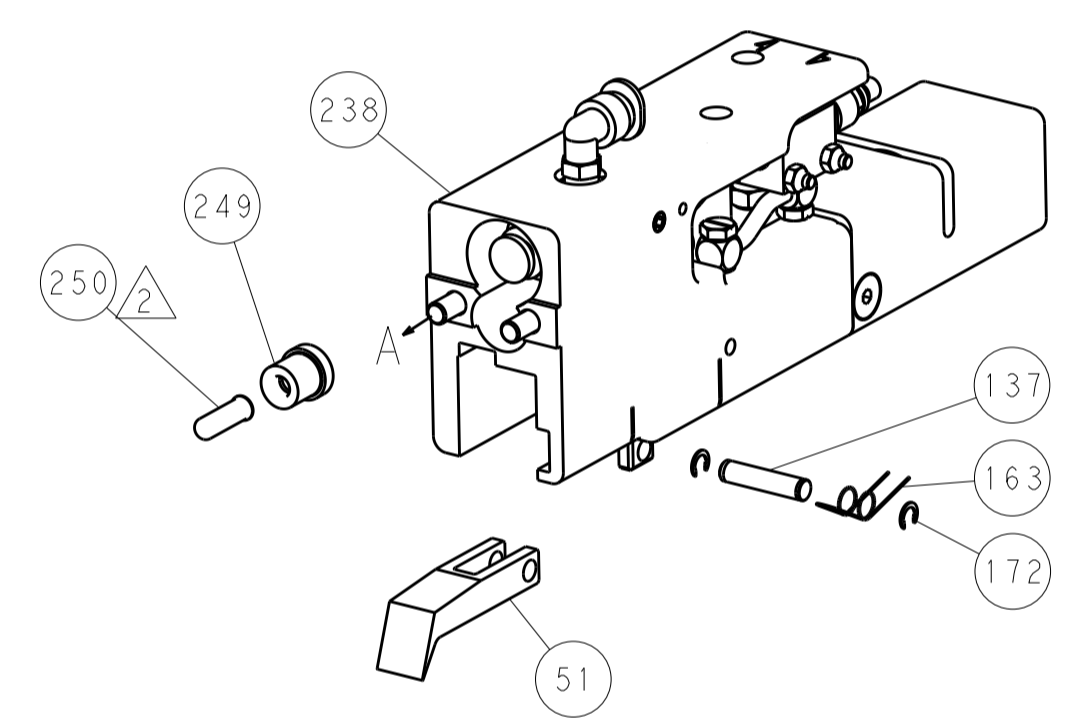


HOLDDOWN SET-UP

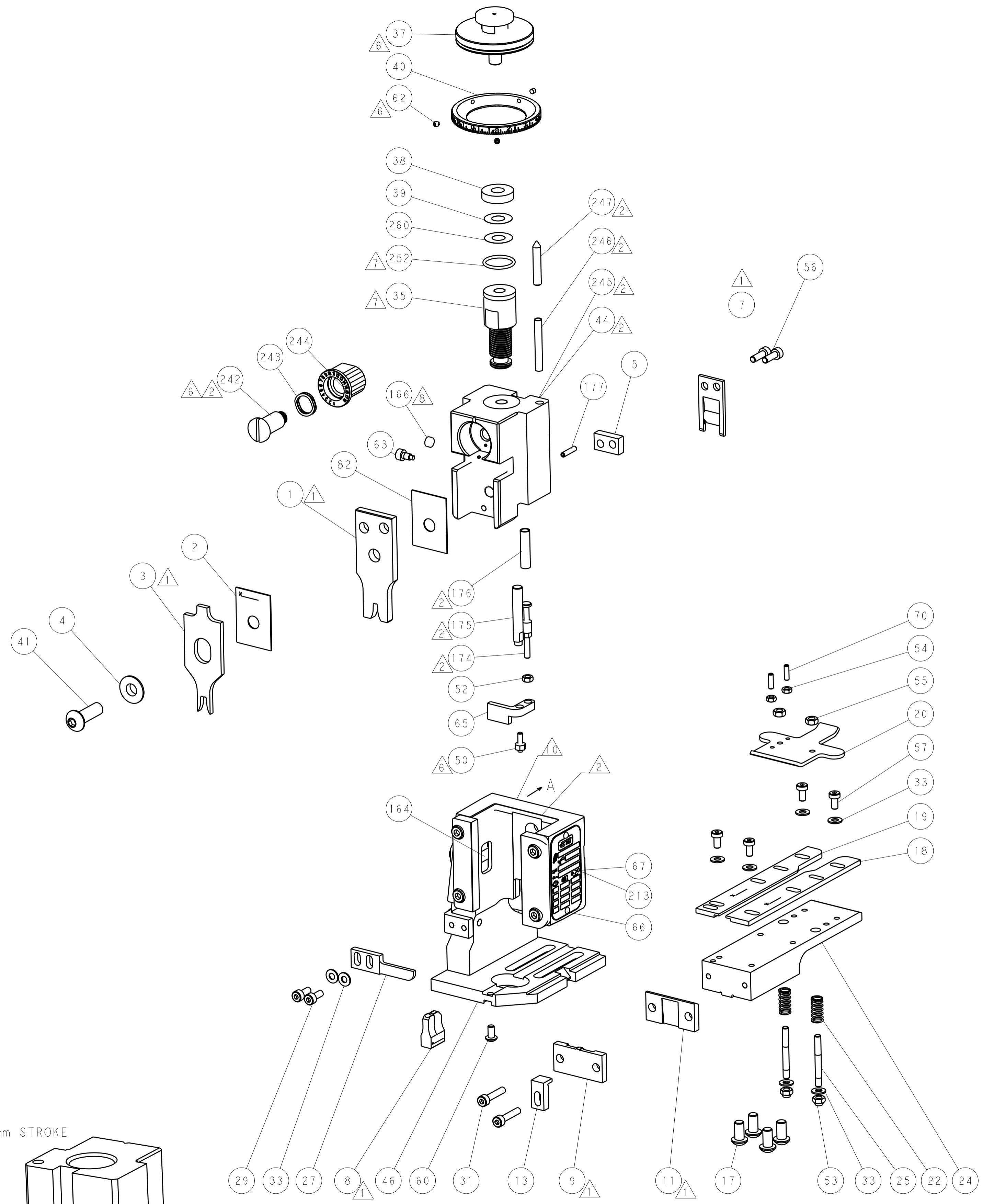
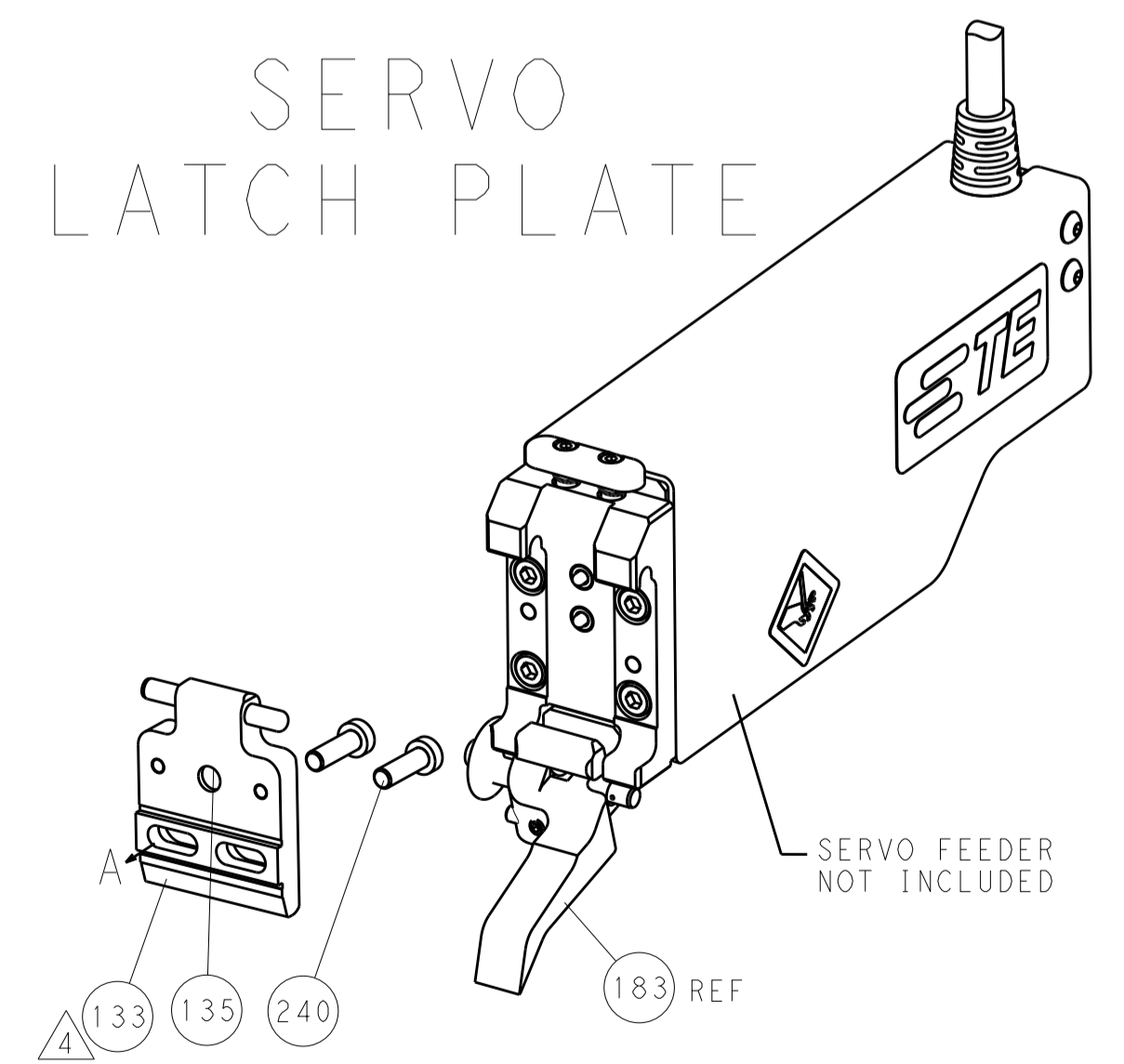
FEED TYPE
MECHANICAL



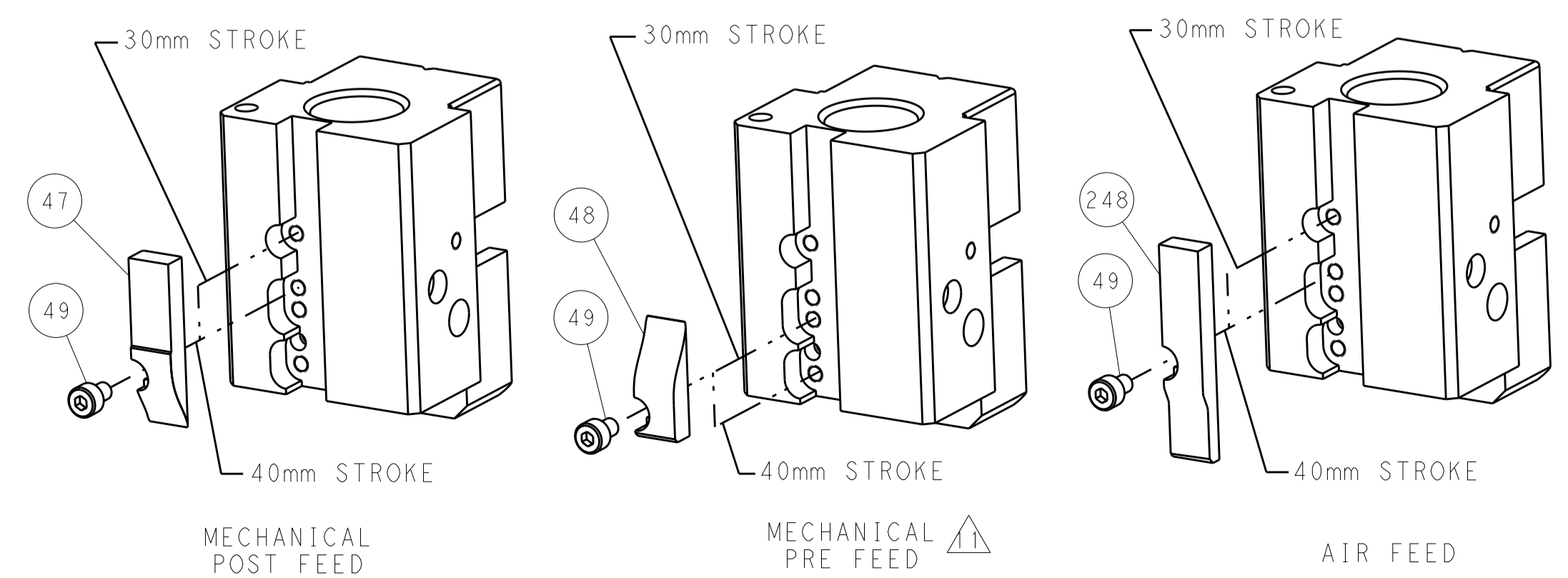
PNEUMATIC



SERVO
LATCH PLATE



CAM POSITIONS



ATLANTIC VERSION
 Shown on sheets 1 of 4 & 2 of 4
 (Pacific version shown on sheets 3 of 4 & 4 of 4)

DIMENSIONS:		TOLERANCES UNLESS OTHERWISE SPECIFIED:		OWN: L. ZHANG 11JAN2012	TE Connectivity Harrisburg, PA 17105-3608
mm		0 PLC ±0.5		CHK: L. ZHANG 11JAN2012	
FINISH:		1 PLC ±0.13		APPV: S. XI 11JAN2012	NAME: Ocean End Feed Applicator
MATERIAL:		2 PLC ±0.013		PRODUCT SPEC:	
		3 PLC ±0.001		APPLICATION SPEC:	SIZE: CAGE CODE DRAWING NO. RESTRICTED TO
		4 PLC ±0.0001		WEIGHT:	A1 00779 ©=2150008
		ANGLES:		Customer Accessible Production Drawing	SCALE: 1:1 SHEET 2 OF 4 REV C

PACIFIC VERSION TERMINATOR INTERFACE ADAPTER	PART NUMBER	REVISION	DESCRIPTION	FEED TYPE	APPLICATOR STYLE CONVERSION CHART						
					CONVERT TO	PART NUMBERS REQUIRED					
	2-2150008-1	C	FINE CRIMP HEIGHT ADJUST	MECHANICAL	PNEUMATIC FEED	2119950-1	2119792-2	-	2119641-2	-	2063440-1
					SERVO LATCH PLATE	2119951-1	1901697-1	8-2150008-5	-	-	2168400-7 (QUANTITY 2)
					SMART APPLICATOR	2161326-1	-	8-2150008-4	-	-	-
	2-2150008-2	C	FINE CRIMP HEIGHT ADJUST	PNEUMATIC	MECHANICAL FEED	2119949-1	2063961-1	5-18022-5	2119653-2	-	-
					SERVO LATCH PLATE	2119951-1	1901697-1	8-2150008-5	-	-	2168400-7 (QUANTITY 2)
					SMART APPLICATOR	2161326-1	-	8-2150008-4	-	-	-
	2-2150008-5	C	FINE CRIMP HEIGHT ADJUST	SERVO LATCH PLATE	MECHANICAL FEED	2119949-1	2063961-1	5-18022-5	2119653-2	-	-
					PNEUMATIC FEED	2119950-1	2119792-2	-	2119641-2	-	2063440-1
	2-2150008-7	C	FINE CRIMP HEIGHT ADJUST	NONE	-	-	-	-	-	-	-
	7-2150008-7	A	CRIMP TOOLING KIT	-	-	-	-	-	-	-	-

APPLICATOR DATA		
CRIMP	SIZE	TYPE
WIRE	3.30 mm [.130]	F
INSUL	4.57 mm [.180]	F
APPLICATOR INSTRUCTIONS 408-10390		

TERMINAL DATA: TE TERMINAL	TE CRIMP SPECIFICATION		
TERMINAL NAME: RING TERMINAL			
WIRE STRIP LENGTH 5.40-5.70 mm [.213-.224 IN]	INSULATION DIAMETER RANGE Ø2.67-3.68 mm [.105-.145 IN]		
TERMINAL APPLICATION SPECIFICATION 114-2084			
TERMINALS APPLIED			
TE TERMINAL	TE TERMINAL	TE TERMINAL	TE TERMINAL
350436-2	61794-1	61795-1	61795-8
350436-3	61794-4	61795-3	63640-1
350436-4	61794-5	61795-4	640051-1
61793-1	61794-6	61795-5	640052-1
61793-3	61794-8	61795-6	

WIRE SIZE	CRIMP HEIGHT mm [INCH]	CRIMP HEIGHT REFERENCE SETTING
14 AWG	2.18 +/- 0.05 [.086 +/- .002]	6.8
16 AWG	1.98 +/- 0.05 [.078 +/- .002]	8.6
18 AWG	1.85 +/- 0.05 [.073 +/- .002]	10.0

- RECOMMENDED SPARE PARTS
- GREASE BEARING SURFACES LIGHTLY
- 3. LUBRICATE DAILY PER THE APPLICATOR INSTRUCTION SHEET SUPPLIED WITH THE APPLICATOR.
- APPLICATOR SPECIFIC DATA TO BE ENTERED INTO BLANK MEMORY CHIP AT ASSEMBLY. SEE BELOW FOR PART NUMBER:
 MECHANICAL FEED WITH "SMART APPLICATOR" CONVERSION: 8-2150008-4
 PNEUMATIC FEED WITH "SMART APPLICATOR" CONVERSION: 8-2150008-4
 SERVO FEED WITH "FINE CRIMP HEIGHT ADJUST": 8-2150008-5
- 5. ADJUSTMENT OF THE STRIPPER MAY BE REQUIRED WHEN MOVING THE APPLICATOR BETWEEN BENCH AND LEADMAKER APPLICATIONS.
- APPLY PART NUMBER 1-23419-5 LOCTITE TO THREADS OF ITEMS 50, 62 & 242.
- GREASE THREADS, GROOVE AND O-RING ON ITEMS 139 & 153.
- MAGNET, ITEM 166 MUST BE ORIENTED CORRECTLY IN ORDER TO PROPERLY ACTUATE THE COUNTER.
- CRIMP HEIGHT REFERENCE SETTING WAS THE SETTING USED WHEN THE APPLICATOR WAS QUALIFIED AT THE FACTORY. ADJUSTMENT MAY BE NECESSARY WHEN RUNNING APPLICATOR IN THE FIELD.
- SPARE FEED CAM STORAGE LOCATION REFER TO INSTRUCTION SHEET FOR ADDITIONAL INFORMATION.
- THE RECOMMENDED SET-UP FOR END FEED APPLICATORS IS POST-FEED WITH ITEM 2119653-1. THE APPLICATOR CAN BE CONFIGURED FOR PRE-FEED WITH ITEM 2119652-1 BUT MAY ENCOUNTER PROBLEMS WITH SOME APPLICATIONS. FEED ISSUES OR TERMINAL JAMMING MAY OCCUR IN THE PRE-FEED CONFIGURATION.

***WARNING**
 ON INSTALLATION, SET WIRE DISC, ITEM 40 TO LARGEST WIRE SIZE SETTING. USE OF SETTINGS BELOW MINIMUM REQUIRED CRIMP HEIGHT SETTING WILL CAUSE DAMAGE TO CRIMP TOOLING.

-77-27-25-22-21	PART NO	DESCRIPTION	ITEM NO
-	1 1 1 1	2119782-1 FINE ADJUST HEAD ASM, PACIFIC STYLE	251
-	-	2119640-1 PUSH ROD, AIR FEED	250
-	-	2079988-1 BUSHING, LCH5-12, MISUMI	249
-	1 1 1 1	1-22279-3 SPRING, COMPRESSION	246

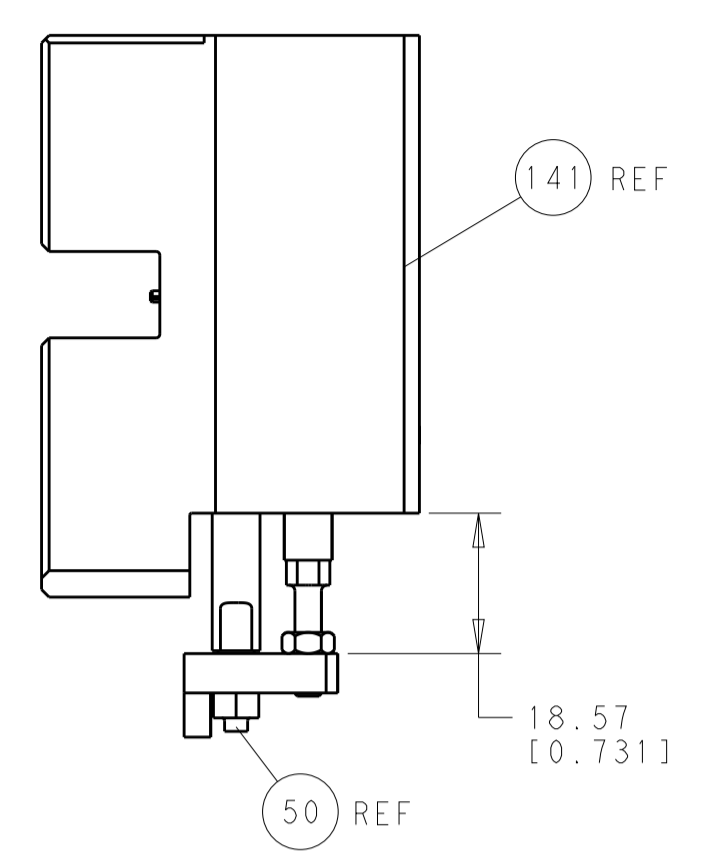
PACIFIC VERSION
 Shown on sheets 3 of 4 & 4 of 4
 (Atlantic version shown on sheets 1 of 4 & 2 of 4)

SET UP GAUGE	LOC	DIST	REVISIONS			
2119599-2	A	66	REV	DATE	BY	APPV
			-	SEE SHEET 1		

REV	DATE	BY	APPV	DESCRIPTION	DATE	BY	APPV		
-	1	1	1	1	2119082-9			CAM, SNAIL, INSULATION ADJUSTMENT	244
-	1	1	1	1	2079764-1			WASHER, WAVE SPRING, CREST-TO-CREST	243
-	1	1	1	1	2119083-1			RETAINER, INSULATION DIAL	242
-	-	2	-	-	2168400-7			SHCS, LOW HEAD, RoHS, M5 X 10	240
-	-	-	-	1	2119580-1			MECHANICAL FEED ASSEMBLY	239
-	-	-	-	1	2063440-1			AIR FEED MODULE	238
-	-	1	-	-	2119740-2			TAG, IDENTIFICATION	213
-	4	4	4	4	2079383-9			SCR, BHSC, RoHS (M6 X 20)	186
-	-	REF	-	-	1901697-1			FEED FINGER ASSEMBLY, EF	183
-	1	1	1	1	6-993111-6			PIN, SLOTTED SPRING 3.0 X 14.0	177
-	1	1	1	1	8-22280-7			SPRING, COMPRESSION	176
-	1	1	1	1	1752353-2			GUIDE PIN, HOLDDOWN	175
-	1	1	1	1	1901680-2			GUIDE PIN, HOLDDOWN	174
-	-	-	2	-	21045-3			RING, RETAIN, EXTERN, 3/16 CRESCENT	172
-	1	1	1	1	994969-1			MAGNET, RARE EARTH HIGH ENERGY	166
-	REF	REF	REF	REF	994970-2			COUNTER, MAGNETIC	164
-	-	-	1	-	240638-1			SPRING, FEED FINGER	163
-	1	1	1	1	8-21084-1			O-RING, .801 ID, .070 DIA. MAT.	153
-	-	-	1	-	2119641-2			FEED CAM, AIR FEED	152
-	1	1	1	1	2119798-2			DETENT PIN	145
-	1	1	1	1	2079383-8			SCR, BHSC, RoHS (M4 X 16)	144
-	-	-	-	1	2119653-2			FEED CAM, POST FEED	142
-	1	1	1	1	2119655-6			APPLICATOR BASIC ASSEMBLY, EF	141
-	1	1	1	1	2119651-1			RAM, ASIAN STYLE, END FEED	140
-	1	1	1	1	2119092-2			BOLT, ADJUSTMENT	139
-	-	-	1	-	3-23627-7			PIN, RETAIN, GRVD, 3/16 X .854	137
-	-	REF	-	-	SEE NOTE 4			MEMORY CHIP, PROGRAMMED	135
-	-	1	-	-	1633743-1			SERVO FEED LATCH ASM	133
-	1	1	1	1	455888-5			SPACER, CRIMPER	82
-	1	1	1	1	2119956-2			DOCUMENTATION PACKAGE	71
-	2	2	2	2	2-18032-2			SCR, SET, FLT POINT M3 X 10.0	70
-	1	-	1	1	2119740-1			TAG, IDENTIFICATION	67
-	2	2	2	2	2168078-1			SCREW, DRIVE, RH, RoHS	66
-	1	1	1	1	1901681-5			HOLDDOWN, TERMINAL	65
-	1	1	1	1	2119793-1			LIMITER, ADJUSTMENT BOLT	63
-	3	3	3	3	992763-5			SCR, SET, SOC, CONE POINT, M3 X 4.0	62
-	-	-	-	1	5-18022-5			SCR, HEX HD CAP, M4 X 6.0	59
-	-	-	-	1	2063961-1			FEED FINGER	58
-	4	4	4	4	2168400-4			SHCS, LOW HEAD, RoHS, M4 X 8	57
-	2	2	2	2	2168083-3			SCR, SKT HD CAP, RoHS, M4 X 12.0	56
-	2	2	2	2	5018030-2			NUT, HEX, REG, RoHS, M4	55
-	2	2	2	2	5018030-1			NUT, HEX, REG, RoHS, M3	54
-	2	2	2	2	986965-8			NUT, LOCK, HEX, TORQUE (M4)	53
-	1	1	1	1	1-5018030-0			NUT, HEX, REG, RoHS, M3.5	52
-	-	-	1	-	2119792-2			PAWL, EF, AIR	51
-	1	1	1	1	1976055-5			STANDOFF, HOLD-DOWN	50
-	-	-	1	2	18023-9			SCR, SKT HD CAP M4 X 6.0	49
-	-	-	-	1	2119652-1			FEED CAM, PRE FEED	48
-	1	1	1	1	2079383-7			SCR, BHSC, RoHS (M8 X 25)	41
-	1	1	1	1	2119645-1			DISC, NUMBERED FA WIRE ADJUSTMENT	40
-	1	1	1	1	2119957-1			APPLICATOR SHIM PACK	39
-	1	1	1	1	2119644-2			RAM WASHER, PRECISION	38
-	8	8	8	8	1-18028-2			WASHER, FLAT, REG M4	33
-	2	2	2	2	2168083-9			SCR, SKT HD CAP, RoHS, M4 X 20	31
-	2	2	2	2	1-2168083-0			SCR, SKT HD CAP, RoHS, M4 X 10	29
-	1	1	1	1	240639-1			STRIPPER (MACHINING)	27
-	2	2	2	2	1320906-1			STUD, THREADED	25
-	1	1	1	1	1752371-1			PLATE, STRIP GUIDE	24
-	2	2	2	2	2-22281-3			SPRING, COMPRESSION	22
-	1	1	1	1	1752373-4			DRAG	20
-	1	1	1	1	1-1901696-5			STRIP GUIDE, REAR	19
-	1	1	1	1	1-1901695-5			STRIP GUIDE, FRONT	18
-	1	1	1	1	1752360-1			SPACER, HOLD-DOWN	13
-	1	1	1	1	240833-1			PLATE, REAR SHEAR	11
-	-	-	-	-	-			-	10
-	1	1	1	1	1-690495-5			PLATE, FRONT SHEAR	9
-	1	1	1	1	1333221-5			ANVIL, EF .130	8
-	1	1	1	1	2217206-4			BLADE, SLUG	7
-	1	1	1	1	1-240641-8			SPACER	5
-	1	1	1	1	238009-1			BLOCK, FL CRIMPER SPACER	4
-	1	1	1	1	2119582-3			CRIMPER, INSULATION F PREMIUM	3
-	1	1	1	1	455888-6			SPACER, CRIMPER	2
-	1	1	1	1	456410-7			CRIMPER, WIRE PREMIUM	1

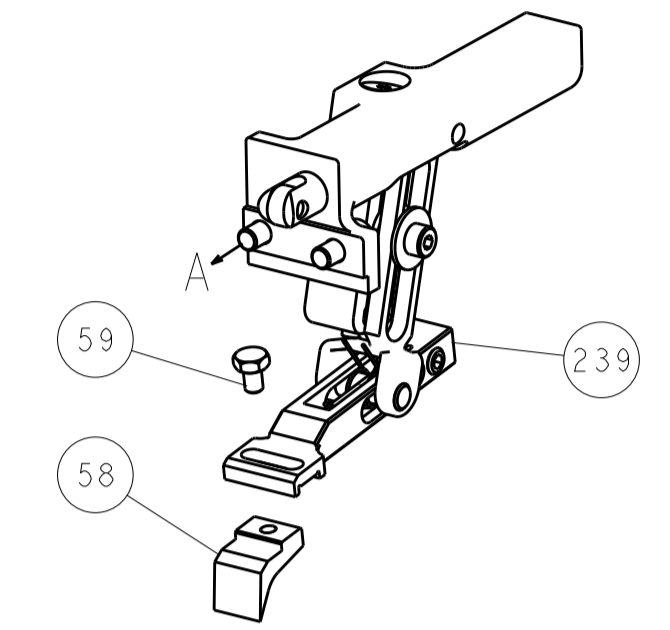
DIMENSIONS:	TOLERANCES UNLESS OTHERWISE SPECIFIED:	DATE	BY	APPV	NAME
mm	0 PLC ±.5 1 PLC ±0.5 2 PLC ±0.13 3 PLC ±0.013 4 PLC ±0.0001 ANGLES ±.0001	11JAN2012	L. ZHANG	L. ZHANG	TE Connectivity Harrisburg, PA 17105-3608
		11JAN2012	S. XI	S. XI	Ocean End Feed Applicator
					SIZE: A1 CASE CODE: 00779 DRAWING NO: C=2150008
					Customer Accessible Production Drawing SCALE: 1:1 SHEET 3 OF 4 REV: C

LOC		DIST		REVISIONS			
A	66	P	LTM	DESCRIPTION	DATE	DWN	APVD
		-	-	SEE SHEET 1	-	-	-

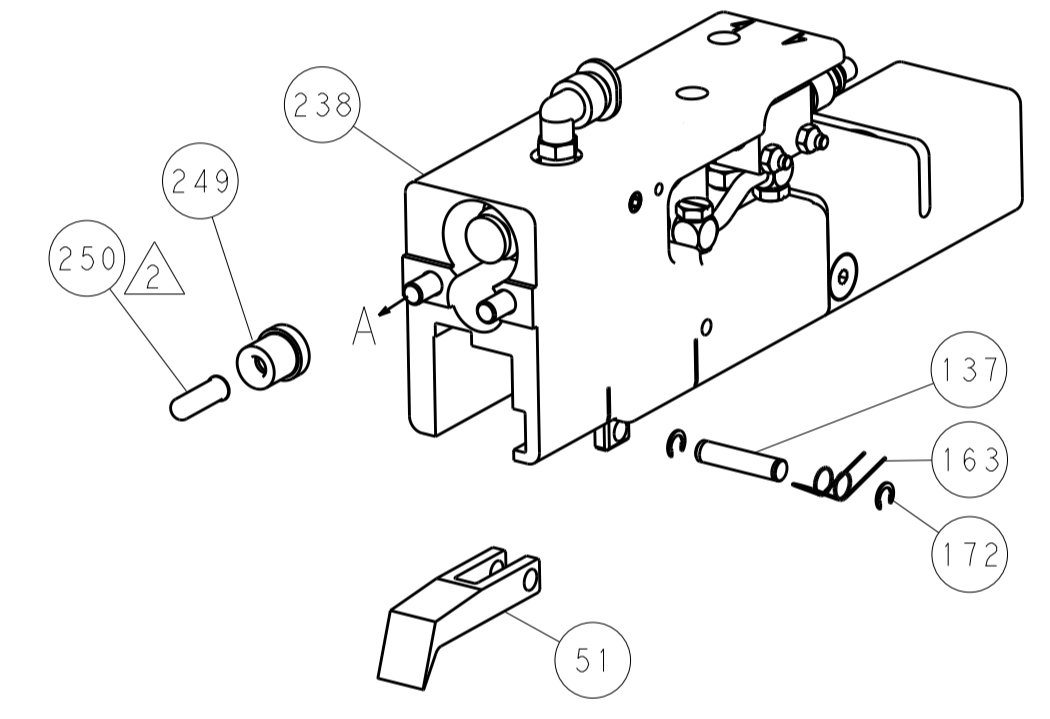


HOLDDOWN SET-UP

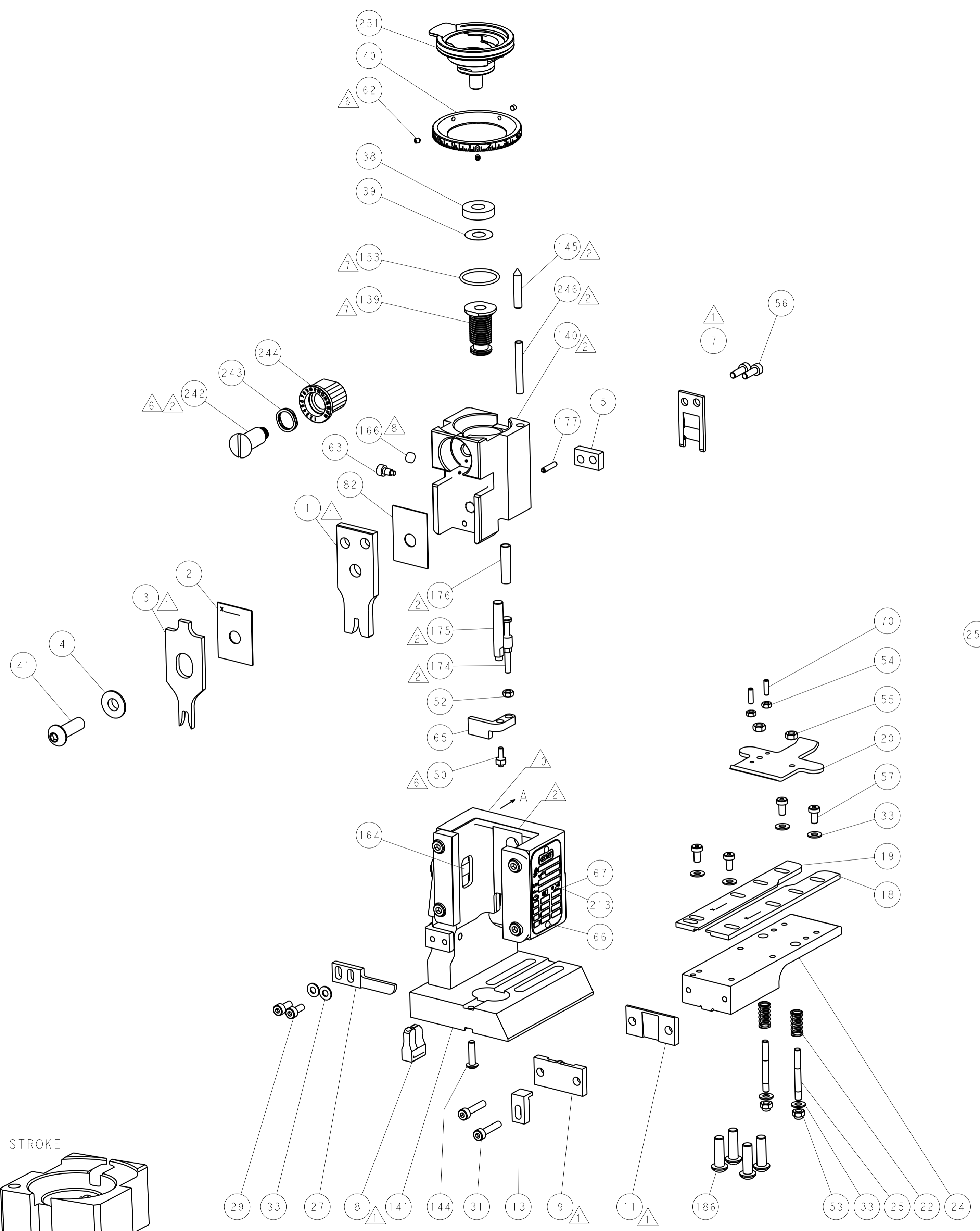
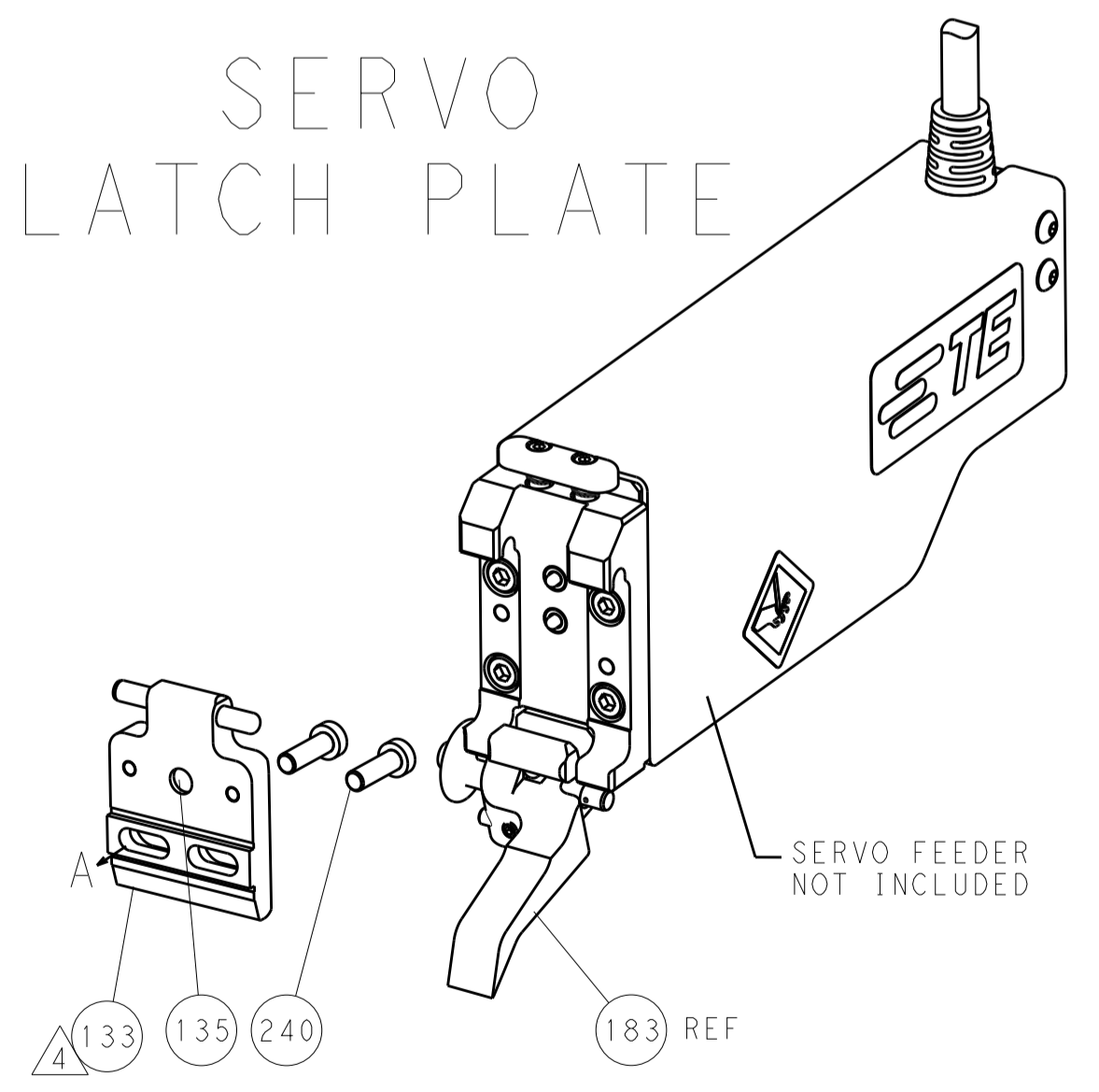
FEED TYPE
MECHANICAL



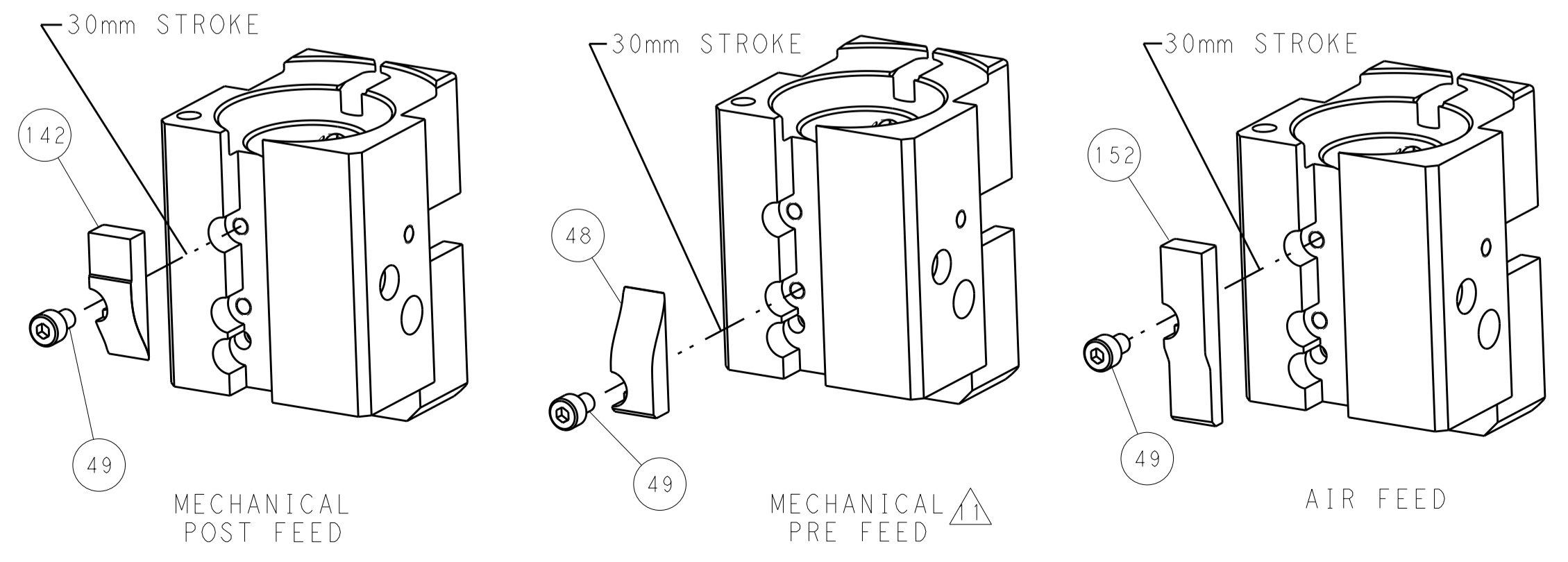
PNEUMATIC



SERVO
LATCH PLATE



CAM POSITIONS



PACIFIC VERSION
 Shown on sheets 3 of 4 & 4 of 4
 (Atlantic version shown on sheets 1 of 4 & 2 of 4)

DIMENSIONS:		TOLERANCES UNLESS OTHERWISE SPECIFIED:		DWN L. ZHANG 11JAN2012		STE TE Connectivity Harrisburg, PA 17105-3608	
mm	0 PLC ±0.5	1 PLC ±0.5	2 PLC ±0.13	3 PLC ±0.013	4 PLC ±0.001	5 PLC ±0.001	ANGLES ±
MATERIAL:	FINISH:	WEIGHT:	SCALE:	Customer Accessible Production Drawing	SCALE 1:1	SHEET 4 OF 4	REV C