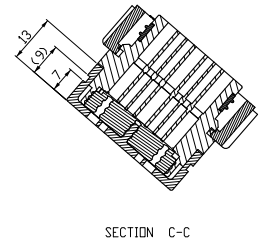
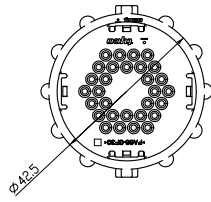
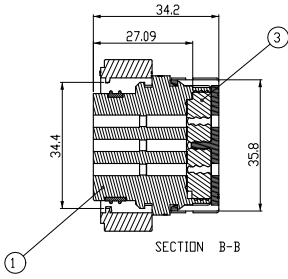
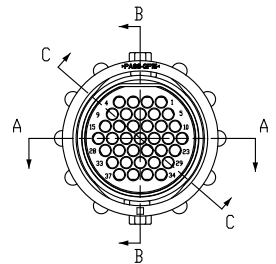
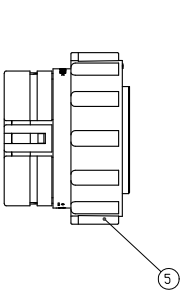
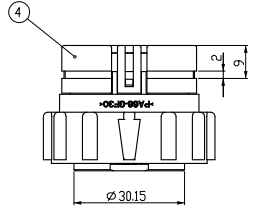
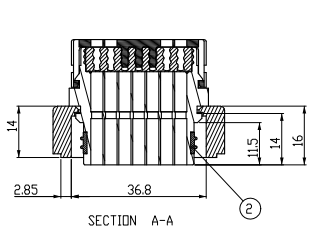
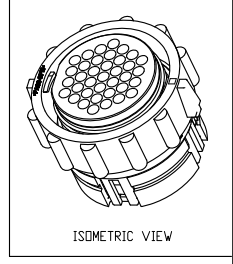


| LOC | DIST | REVISIONS |     |                         |           |     |      |
|-----|------|-----------|-----|-------------------------|-----------|-----|------|
| DS  | -    | P         | LYR | DESCRIPTION             | DATE      | DWN | APVD |
|     |      | A         |     | RELEASED                | 09.JUL'07 | DG  | JK   |
|     |      | B         |     | REVISED (ECR-09-008790) | 16.JUL'09 | KT  | HG   |



- NOTE
- 본 부품은 ES91500-00을 만족할 것.
  - <상대 CONNECTOR P/N: 91206-82000 (TE P/N: 1897260)와 ASS'Y 상태에서 만족할 것>
  - 각 단자 삽입력은 TE Production Spec. 108-10042(4.2磅)를 따를 것.
  - 다음 사용환경을 만족할 것.
    - 내열성: -40 ~ 150 °C
    - 내유성: 상기온도 인진오일에서 내유성 확보할 것.
    - 내진성: 30G
  - 가능성 유해한 흄, 균열, 결함 등이 없을 것.
  - APPLIED TERMINAL P/N: SEE TABLE 1
  - MATING TAB P/N: SEE TABLE 2
  - 지시하지 않은 ROUND는 지면 R로 할 것.
  - DRAFT ANGLE MAX. 0.5°
  - FLASH=MAX 0.2, WARPAGE=MAX 0.2
  - 표시하지 않은 일반 공차는 ES02514-00의 2급을 따를 것.
  - 단자 삽입시 SEAL PROTECTOR(P/N:208338-1)를 반드시 사용할 것.

< TABLE 1 >

| TYPE | PART NO. | WIRE SIZE(mm <sup>2</sup> /AWG) | INSULATION DIA.(mm) | CONDUCTOR STRANDING (NUMBER X AWG) |
|------|----------|---------------------------------|---------------------|------------------------------------|
| III+ | 66100-8  | 0.85 / 18                       | 1.778               | 19 X 30                            |

< TABLE 2 >

| TYPE | PART NO. | WIRE SIZE(mm <sup>2</sup> /AWG) | INSULATION DIA.(mm) | CONDUCTOR STRANDING (NUMBER X AWG) |
|------|----------|---------------------------------|---------------------|------------------------------------|
| III+ | 66098-8  | 0.85 / 18                       | 1.778               | 19 X 30                            |

| QTY | FINISH/COLOR | MATERIAL       | DESCRIPTION   | PART NO.  | Q'TY | ASSY P/N  |
|-----|--------------|----------------|---------------|-----------|------|-----------|
| 5   | BLACK        | PA66-GF15      | COUPLING RING | 1897265-2 | 1    | 1897263-1 |
| 4   | BLACK        | PA66-GF30      | COVER HOUSING | 1897262-2 | 1    |           |
| 3   | RED          | SILICON RUBBER | FAMILY SEAL   | 1897905-6 | 1    |           |
| 2   | RED          | SILICON RUBBER | INNER SEAL    | 1897906-6 | 1    |           |
| 1   | BLACK        | PA66-GF30      | PLUG HOUSING  | 1897264-2 | 1    |           |

|                                  |  |   |  |  |  |
|----------------------------------|--|---|--|--|--|
| DIMENSIONS: (mm)<br>             |  | TO DIMENSIONS UNLESS OTHERWISE SPECIFIED<br>0 PLC ±<br>1 PLC ±<br>2 PLC ±<br>3 PLC ±<br>4 PLC ±<br>ANGLES ± |  | DWN: KT JANG<br>CHK: JW JANG<br>APVD: HJ OH<br>NAME: AMP KOREA, Kyungson, Korea<br>PRODUCT SPEC: EUI 37P PLUG ASS'Y<br>APPLICATION SPEC: |  |
| MATERIAL: SEE TABLE<br>FINISH: - |  | WEIGHT: A2<br>CUSTOMER DRAWING:   |  | SIZE: A2<br>CAGE CODE: 00779<br>DRAWING NO: C=1897263<br>RESTRICTED TO: -<br>SCALE: 1:1<br>SHEET: 1 OF 1<br>REV: B                       |  |