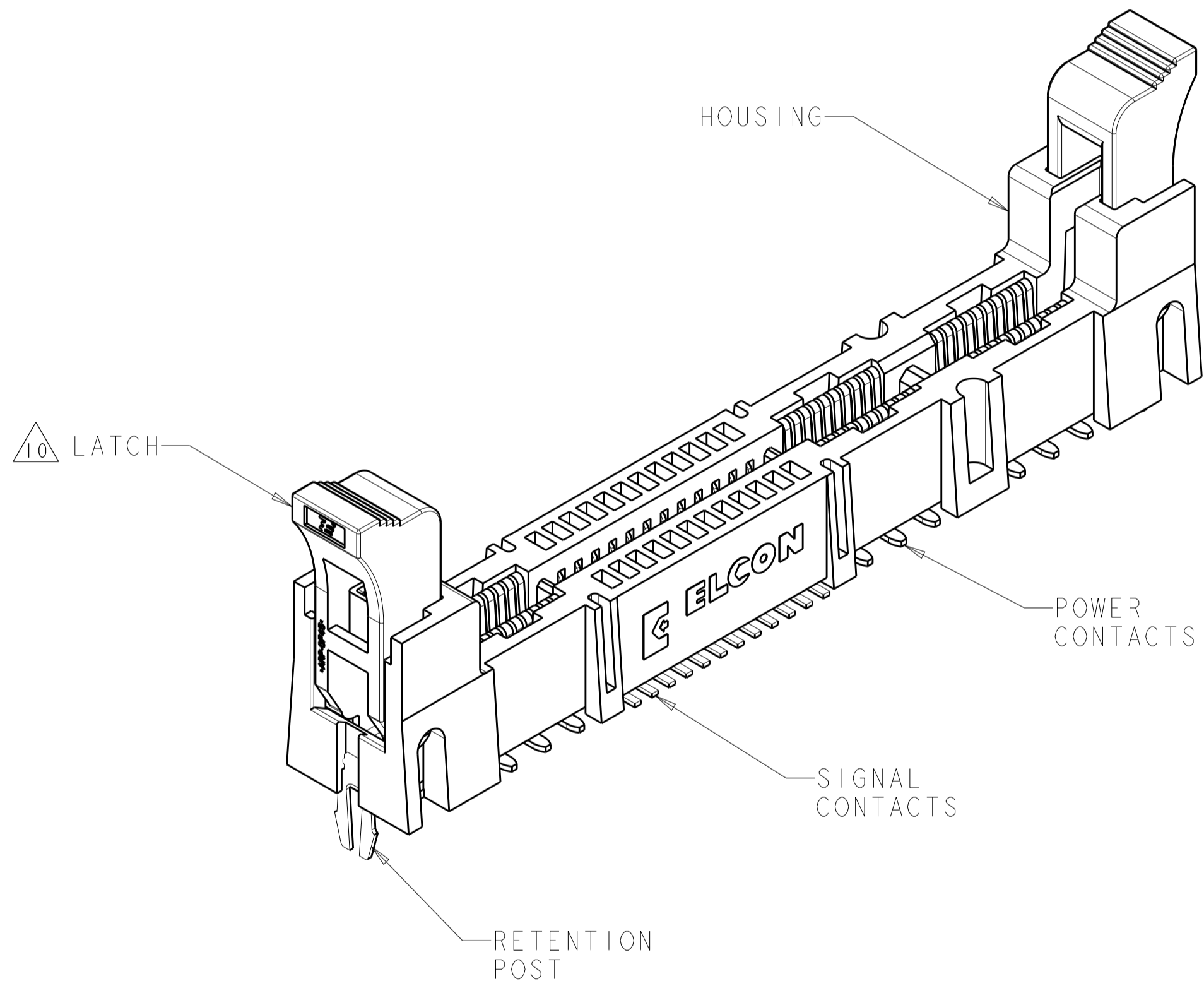


| LOC | DIST | REVISIONS | | | | | |
|-----|------|-----------|-----|-----------------------------|-----------|-----|------|
| | | REV | LTN | DESCRIPTION | DATE | DWN | APVD |
| GP | 00 | G1 | | REVISED PER ECO-11-016901 | 05APR2012 | KH | AS |
| | | G2 | | ADD MODULE EXTRACTION GUIDE | 10JUL2012 | AY | SZ |

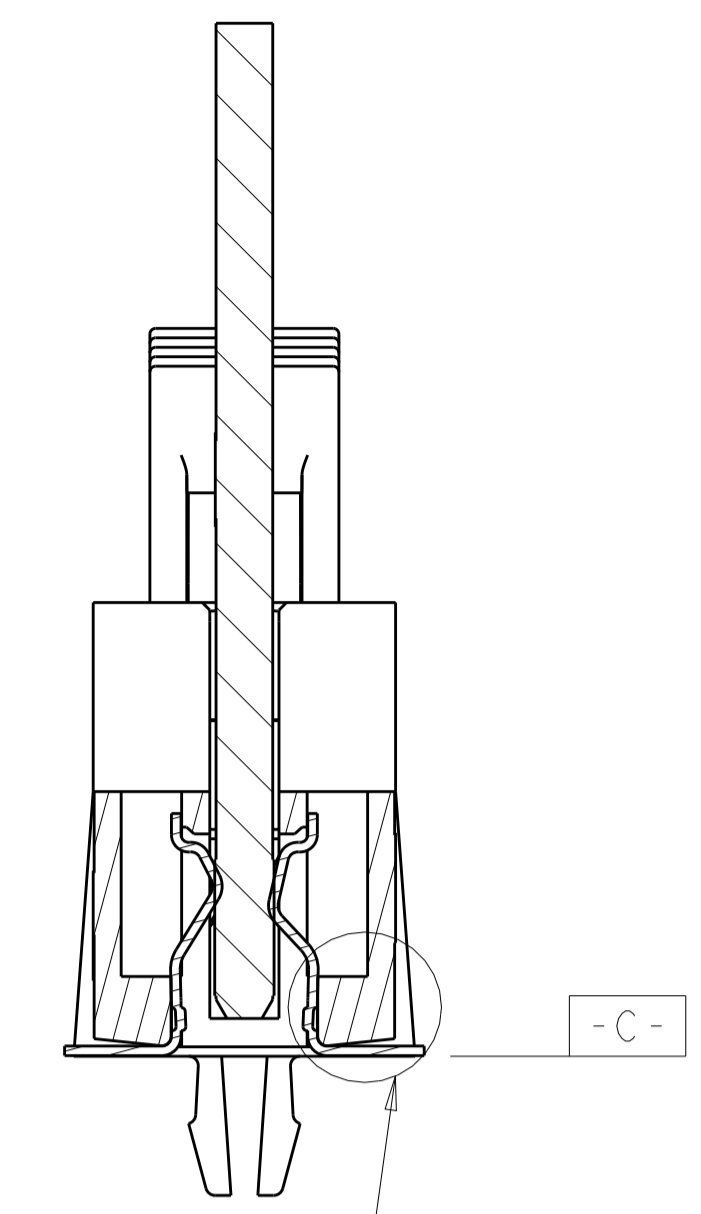
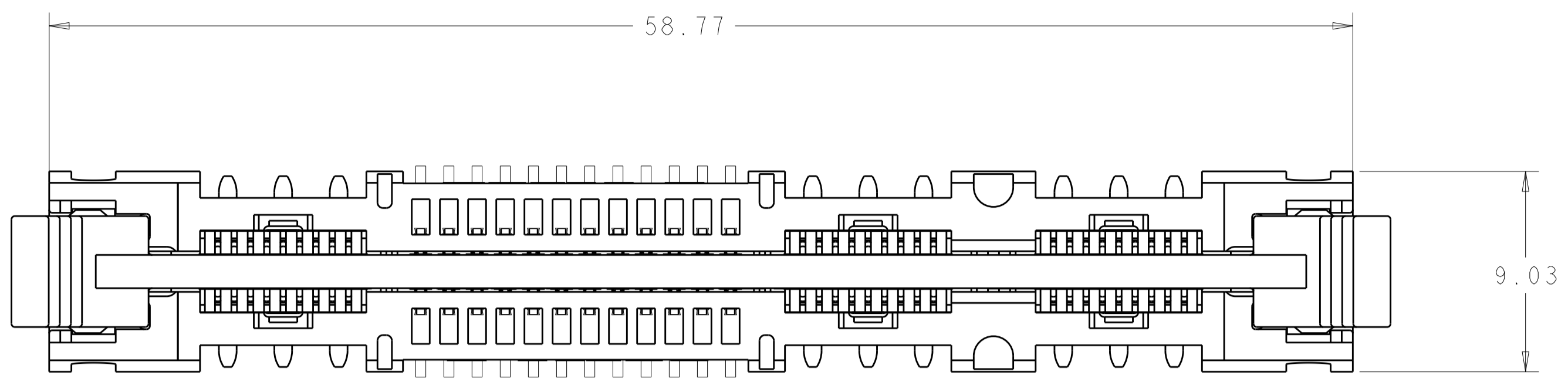


1. PART NUMBER CHANGES AND OR DESIGN CHANGES AFFECTING ITEM INTERCHANGEABILITY REQUIRE PRIOR TYCO ELECTRONICS APPROVAL AND AUTHORIZATION BY REVISION TO THIS DRAWING.
2. MATERIAL:
 HOUSING: GLASS FILLED POLYESTER, COLOR-BLACK
 UL94V-0 FLAMMABILITY RATED
 LATCHES: THERMOPLASTIC, GLASS REINFORCED,
 COLOR: BLACK, UL94V-0 FLAMMABILITY RATED
 CONTACTS: COPPER ALLOY
 RETENTION POST: COPPER ALLOY
3. FINISH:
 SIGNAL CONTACTS:
 MATING AREA-0.76µm MIN GOLD OVER 3.81µm MIN NICKEL
 0.64µm MIN NICKEL PLATE OVER REMAINDER
 SMT TAILS-3.81µm MIN MATTE TIN OVER NICKEL PLATE
 POWER CONTACTS:
 1.27µm MIN NICKEL PLATE ALL OVER
 MATING AREA-0.76µm MIN GOLD OVER NICKEL PLATE
 SMT TAILS-3.05µm MIN TIN OVER NICKEL PLATE
 RETENTION POSTS:
 3.05µm MIN MATTE TIN OVER 0.63µm MIN NICKEL
4. ITEMS PROVIDED TO THIS SPECIFICATION TO BE PERMANENTLY IDENTIFIED WITH PART NUMBER AND DATE CODE.
5. MAXIMUM BURR OF 0.013 ON CARD TAB AREA.
6. SET TRACE BACK FROM PC BOARD EDGE. NO SOLDERMASK ALLOWED BETWEEN PC BOARD EDGE AND TRACE.
7. CONNECTOR ACCEPTS 1.57±0.13 THICK PC BOARD.
8. KEEP OUT AREA FOR COMPONENTS ONLY.
9. FEATURE REQUIRED FOR USE WITH EJECTOR.
10. CAUTION:
 LATCHES ARE INTENDED FOR RETENTION OF PC BOARD TO CONNECTOR. DO NOT ATTEMPT TO FULLY EJECT PC BOARD FROM CONNECTOR WHILE DISENGAGING LATCHES, DAMAGE TO LATCHES AND OR CONNECTOR MAY OCCUR.
11. RECOMMENDED GOLD FINGER LENGTH FOR RELIABLE CONTACT.
12. DATUMS AND BASIC DIMENSIONS ESTABLISHED BY CUSTOMER.
13. FOR DESIGN OBJECTIVES SEE 108-2301.

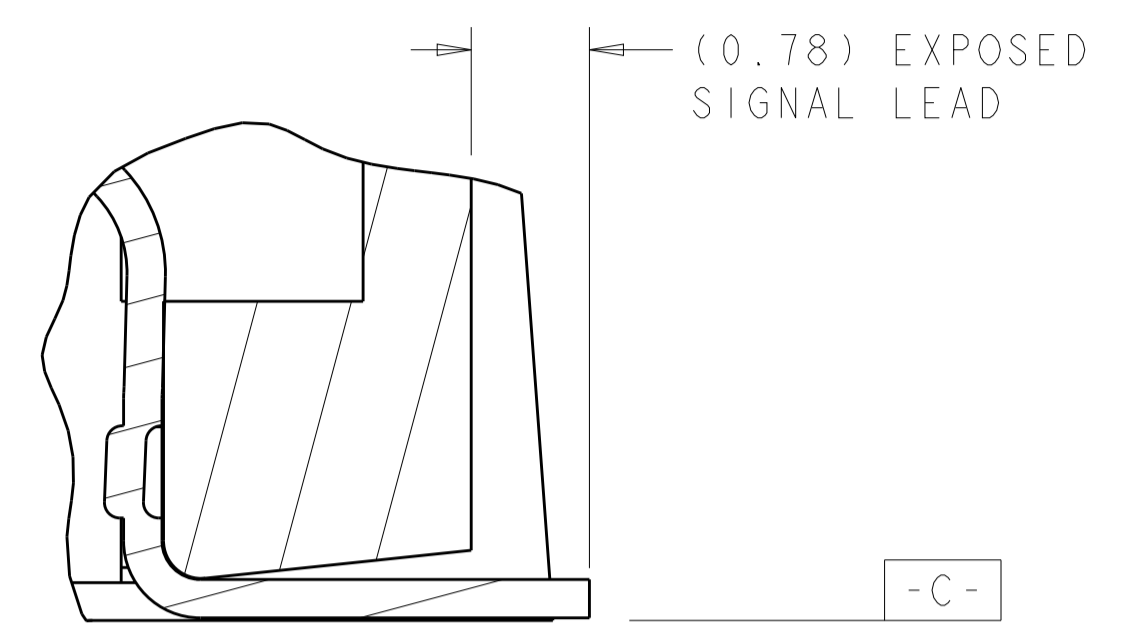
| | |
|---------|-------------|
| 4.61 | 1926155-4 |
| 4.19 | 1926155-3 |
| 3.68 | 1926155-2 |
| DIM "A" | PART NUMBER |

| | | | | | |
|--|--|----------------------|---------------------|--|--|
| THIS DRAWING IS A CONTROLLED DOCUMENT. | | DWN G. PETERS/DTI | 25MAY2006 | TE Connectivity NAME: SOCKET CONNECTOR WITH LATCH, SMT P2-S24-P4 MINI CROWN EDGE | |
| DIMENSIONS: | | CM | - | | |
| TOLERANCES UNLESS OTHERWISE SPECIFIED: | | APVD | N. REESER 25MAY2006 | PRODUCT SPEC | |
| mm | | APPLICATION SPEC | | SIZE | |
| 0 PLC ±.5 | | WEIGHT | | A100779C=1926155 | |
| 1 PLC ±.25 | | CUSTOMER DRAWING | | SCALE 1:1 SHEET 1 OF 5 REV G2 | |
| 2 PLC ±.25 | | | | | |
| 3 PLC ±.25 | | | | | |
| 4 PLC ±.25 | | | | | |
| ANGLES ±.2 | | | | | |
| FINISH | | | | | |

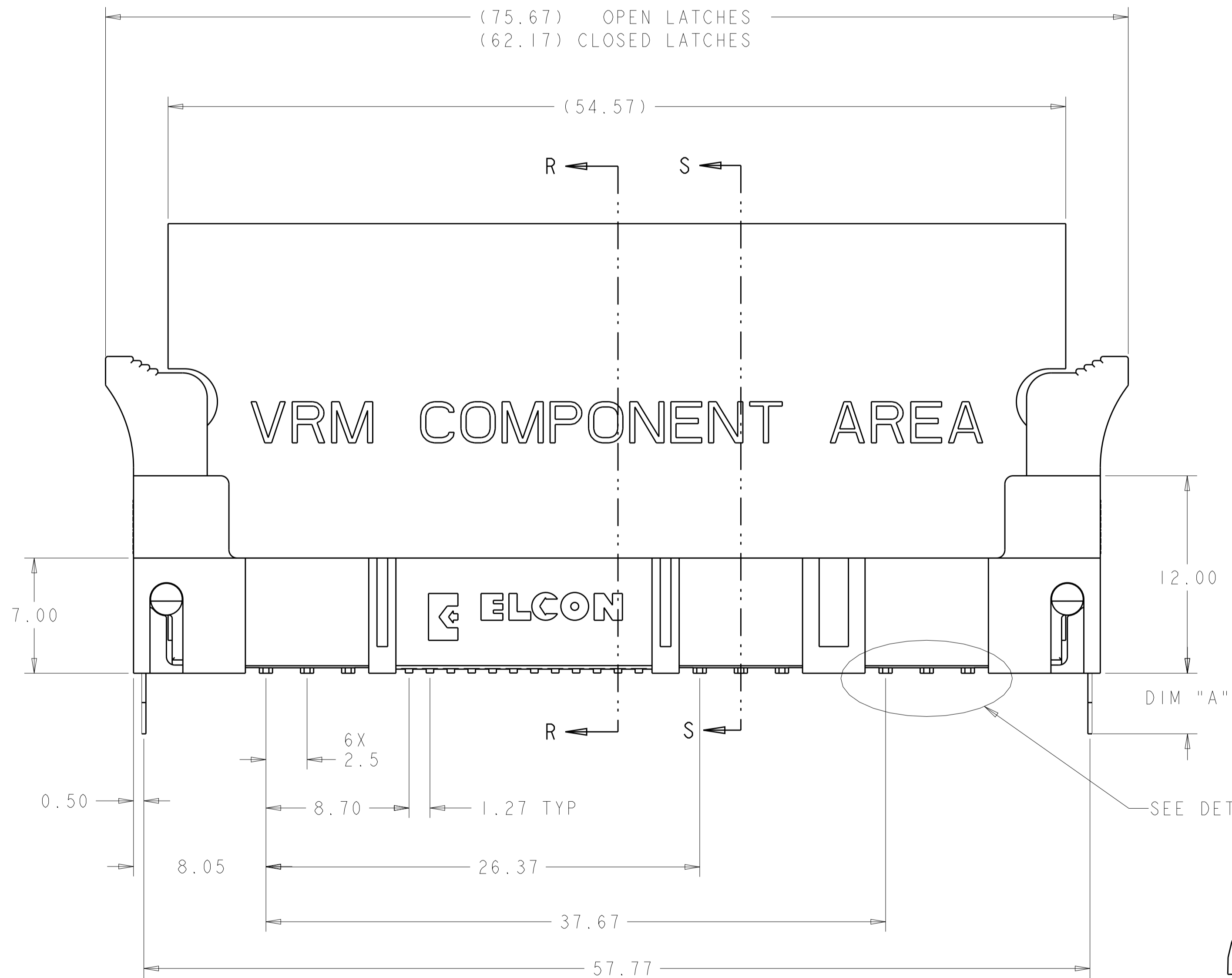
| LOC | DIST | REVISIONS | | | |
|-----|------|-------------|------|-----|------|
| P | LTN | DESCRIPTION | DATE | DWN | APVD |
| - | - | SEE SHEET 1 | - | - | - |



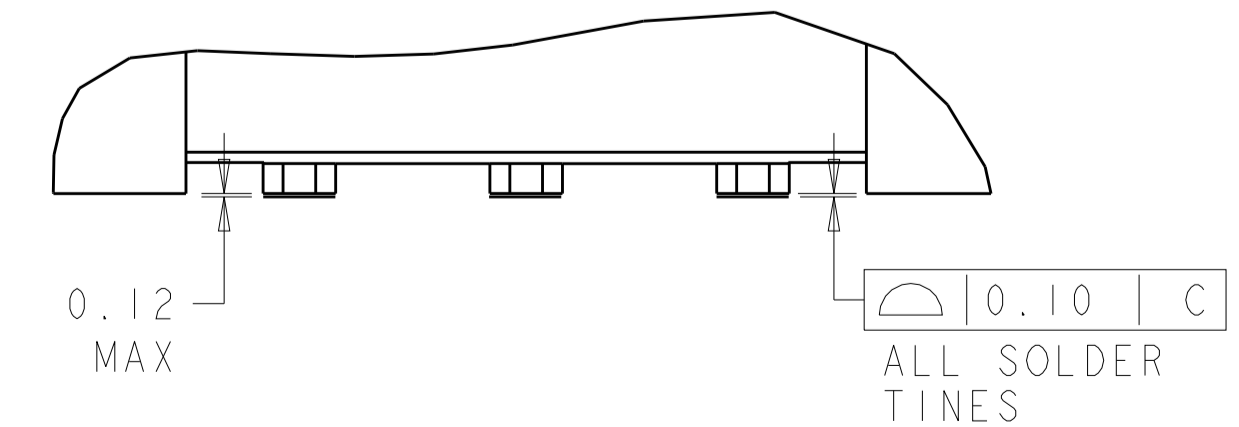
SECTION R-R
SEE DETAIL H



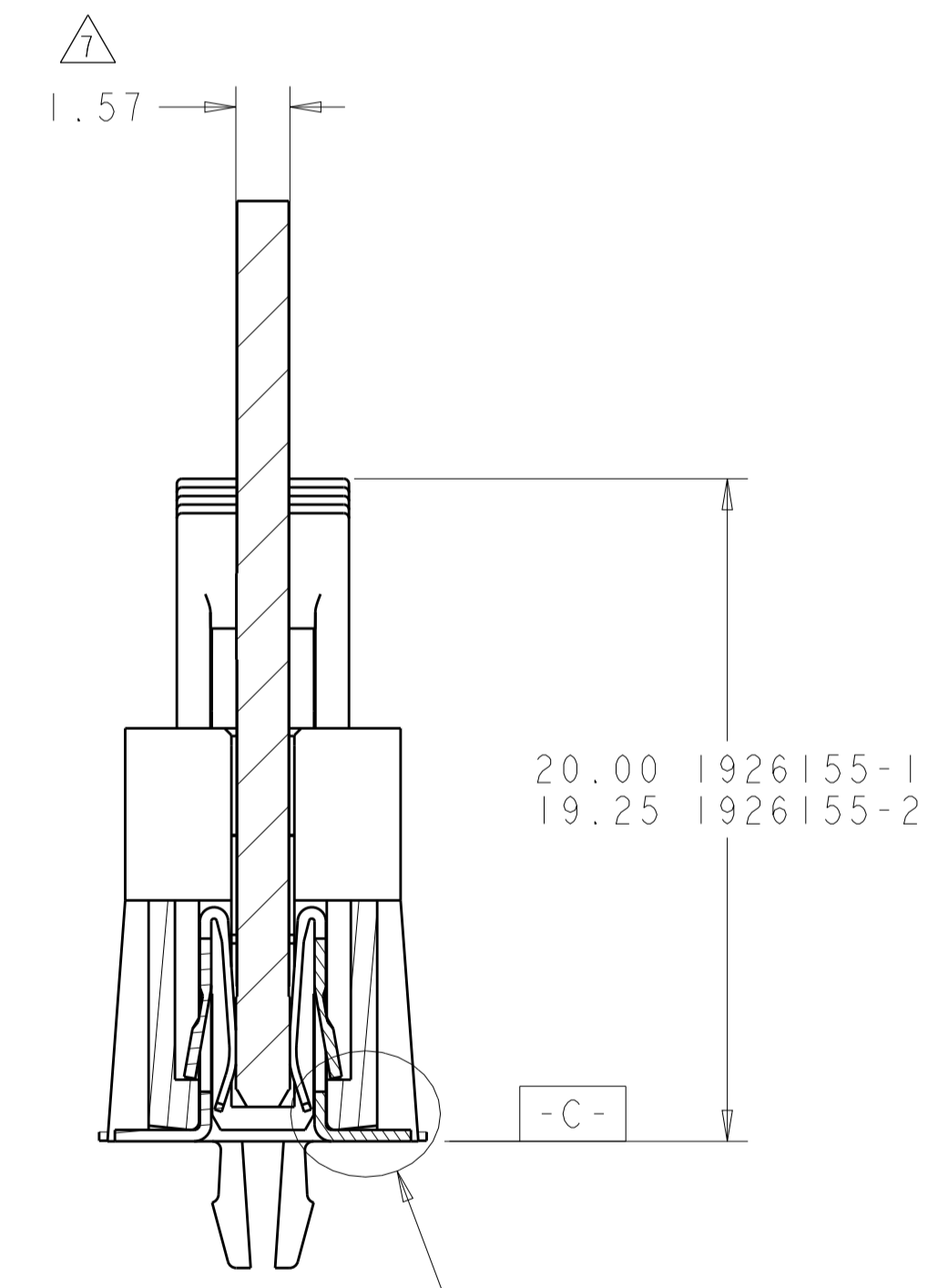
DETAIL H
SCALE 20:1



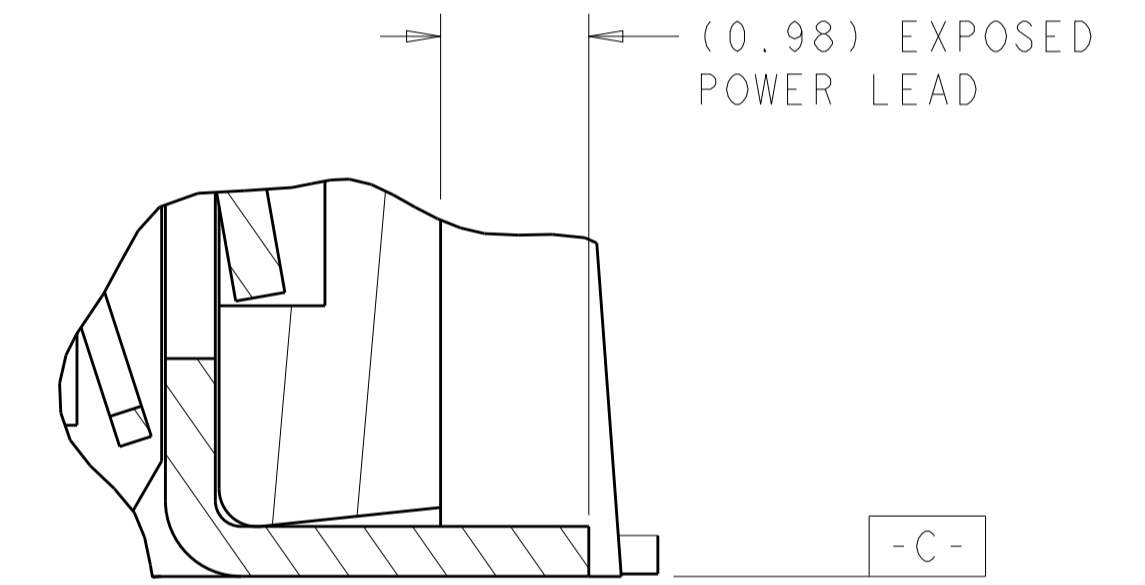
SEE DETAIL Z



DETAIL Z
SCALE 12:1



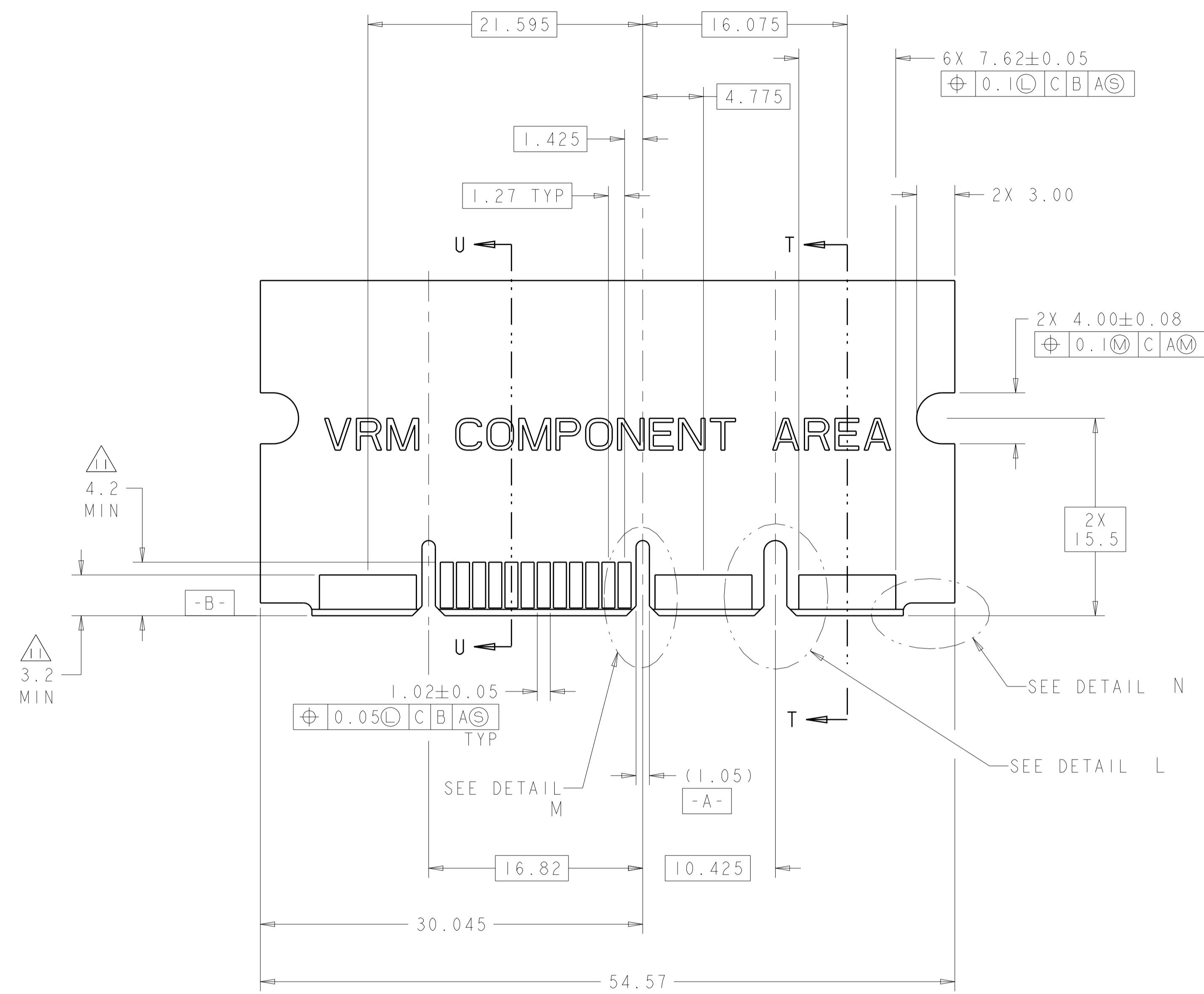
SECTION S-S



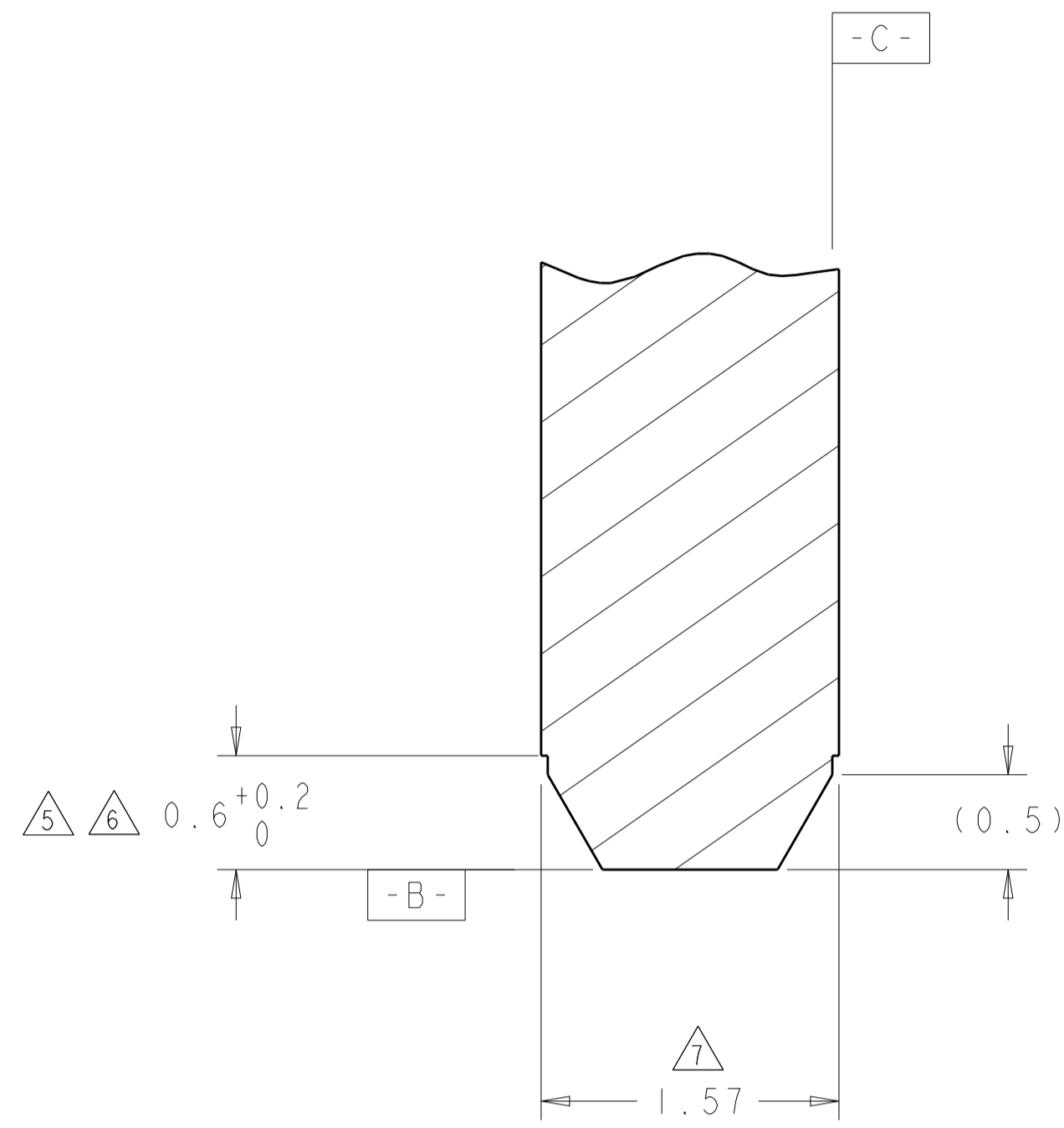
DETAIL G
SCALE 20:1

| | | | |
|--|--|--|---|
| THIS DRAWING IS A CONTROLLED DOCUMENT. | | DWN: G. PETERS/DTI 25MAY2006 | TE Connectivity NAME: SOCKET CONNECTOR WITH LATCH, SMT P2-S24-P4 MINI CROWN EDGE |
| DIMENSIONS: mm | | CHK: N. BESSER 25MAY2006 | |
| 0 PLC ±.5 1 PLC ±.5 2 PLC ±.25 3 PLC ±.25 4 PLC ±.25 ANGLES ±.2 | | APVD: N. BESSER 25MAY2006 PRODUCT SPEC: APPLICATION SPEC: SIZE: CAGE CODE: DRAWING NO: WEIGHT: | RESTRICTED TO: A100779C=1926155 SCALE: 5:1 SHEET 2 OF 5 REV: G2 |
| MATERIAL: FINISH: | | CUSTOMER DRAWING | |

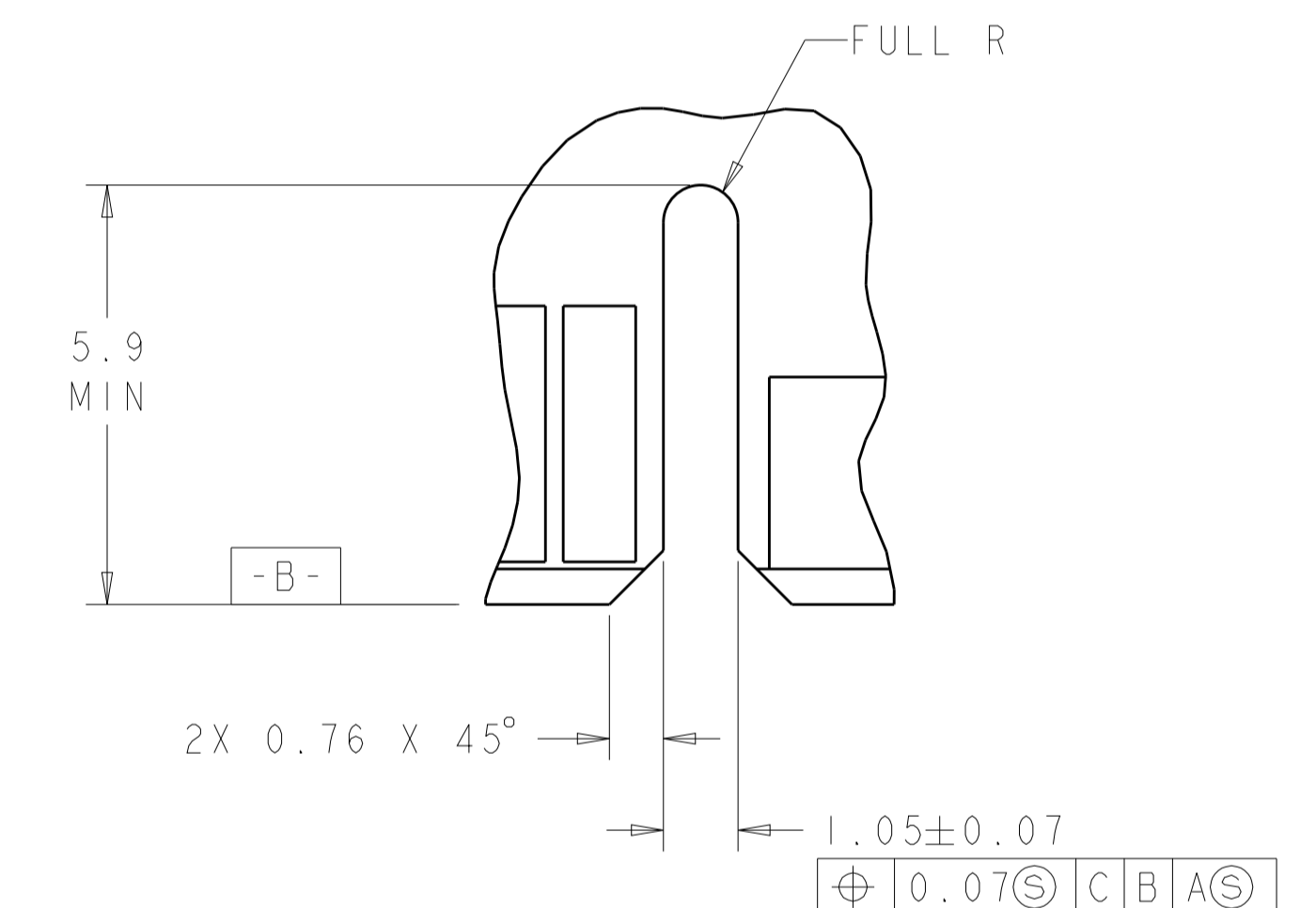
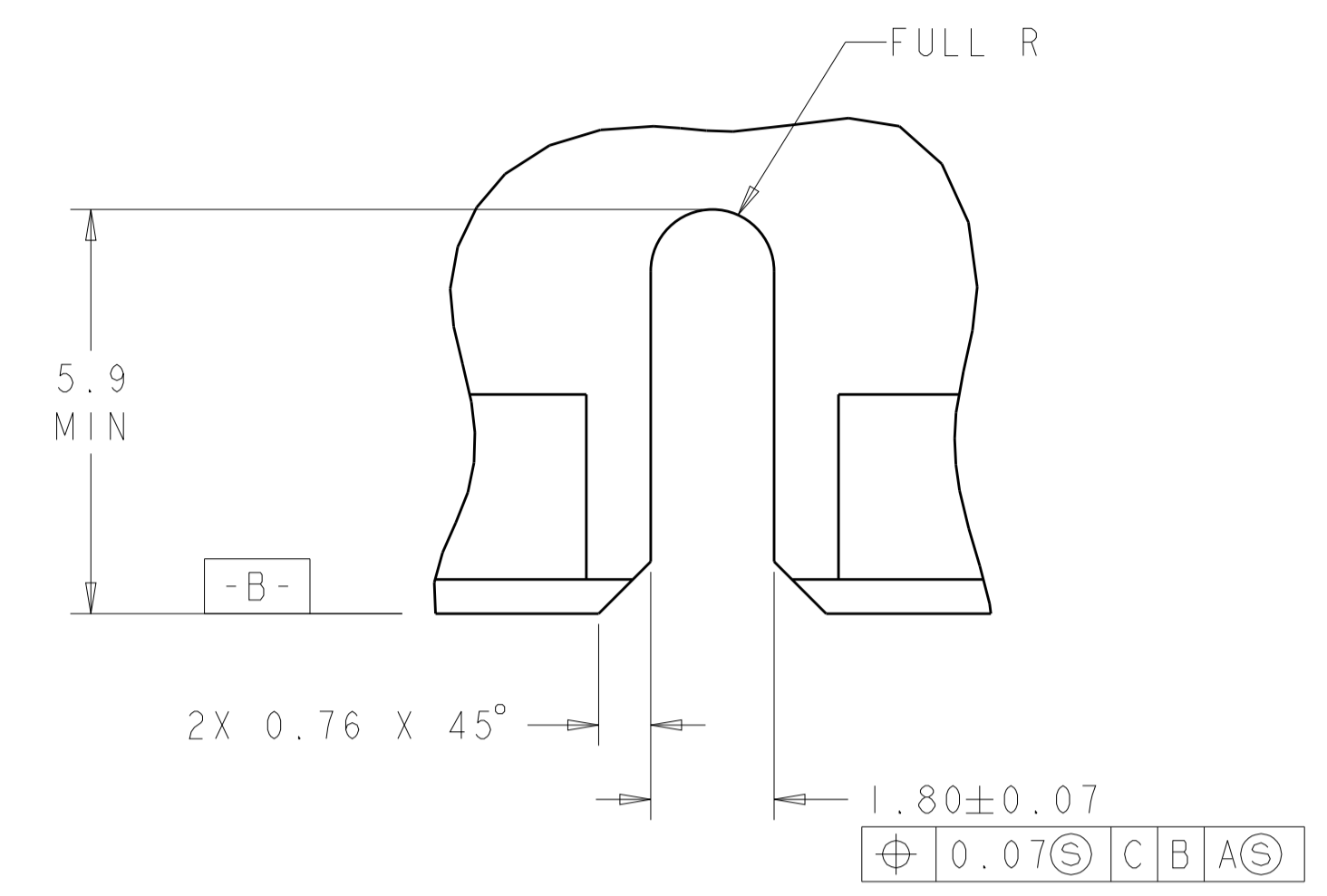
| LOC | DIST | REVISIONS | | | |
|-----|------|-------------|------|----|------|
| GP | 00 | REV | DATE | BY | APPV |
| - | - | SEE SHEET 1 | - | - | - |



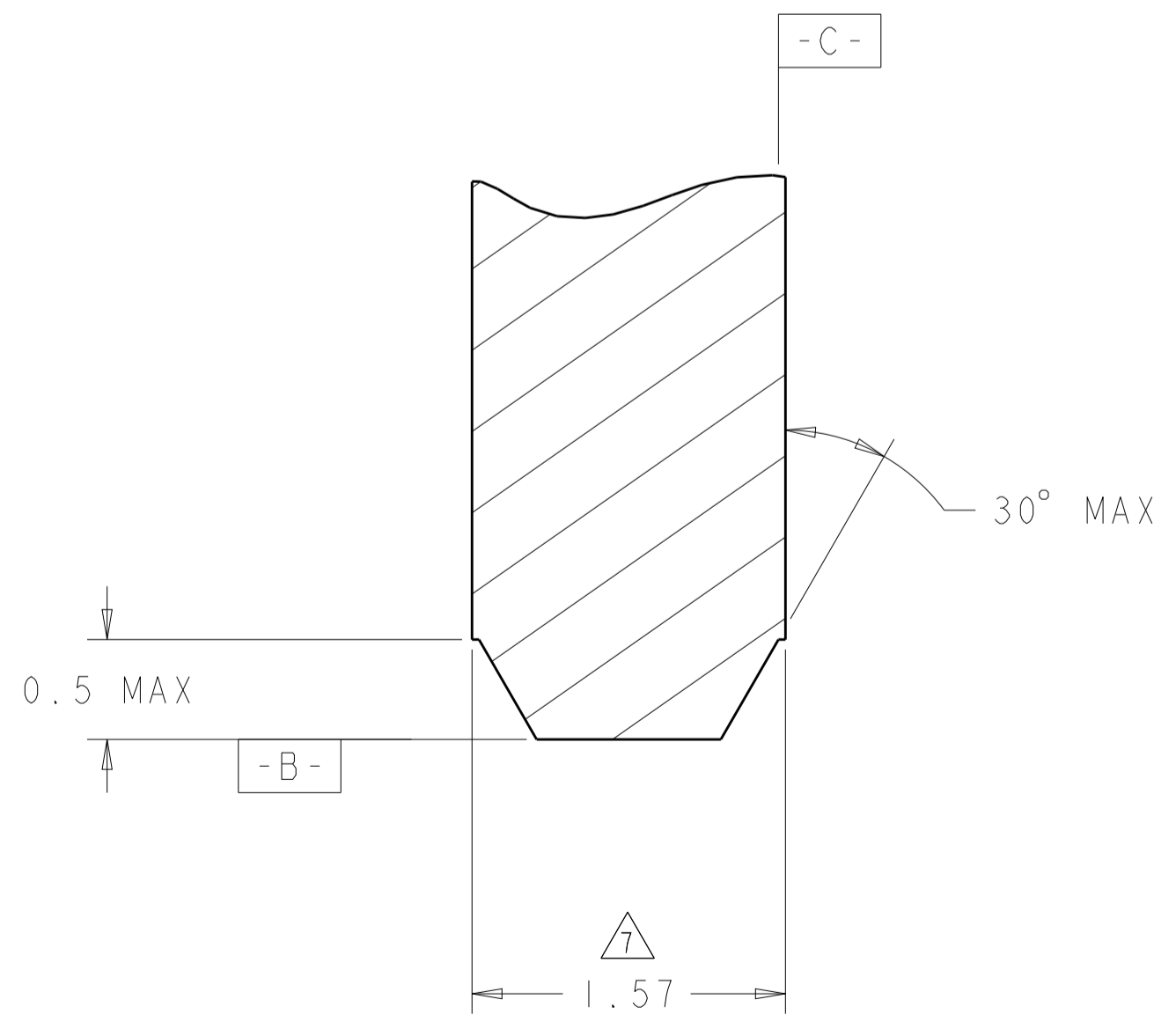
RECOMMENDED MATING BOARD
SCALE 4:1



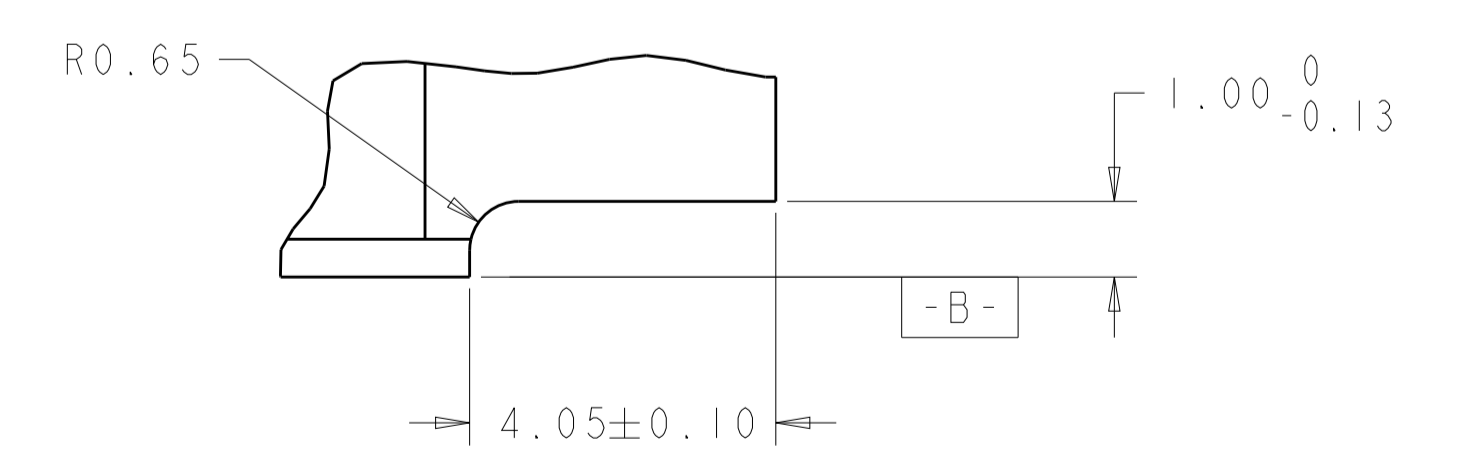
SECTION U-U
SCALE 30:1



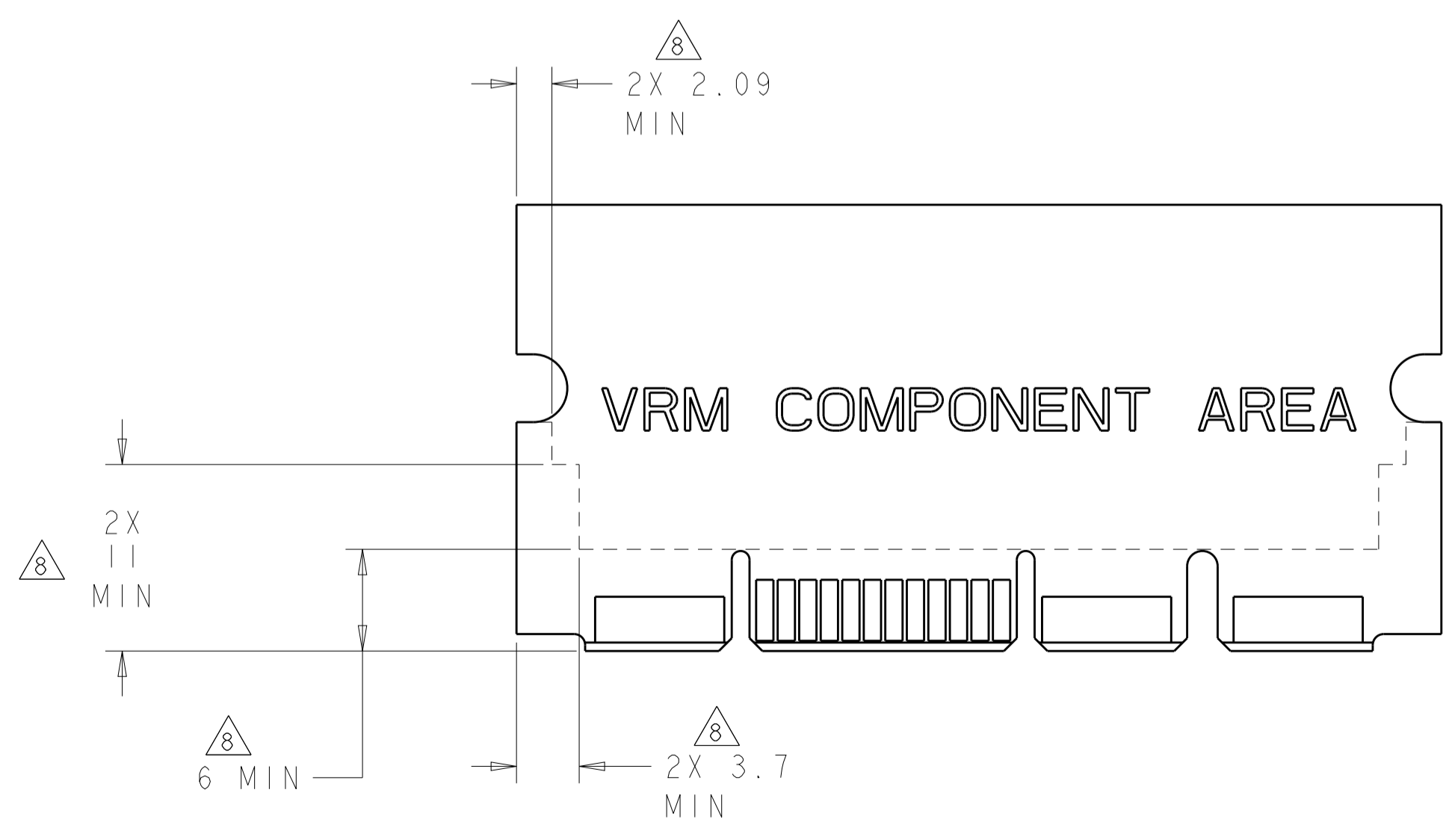
DETAIL M
2X TYPICAL
SCALE 10:1



SECTION T-T
SCALE 30:1



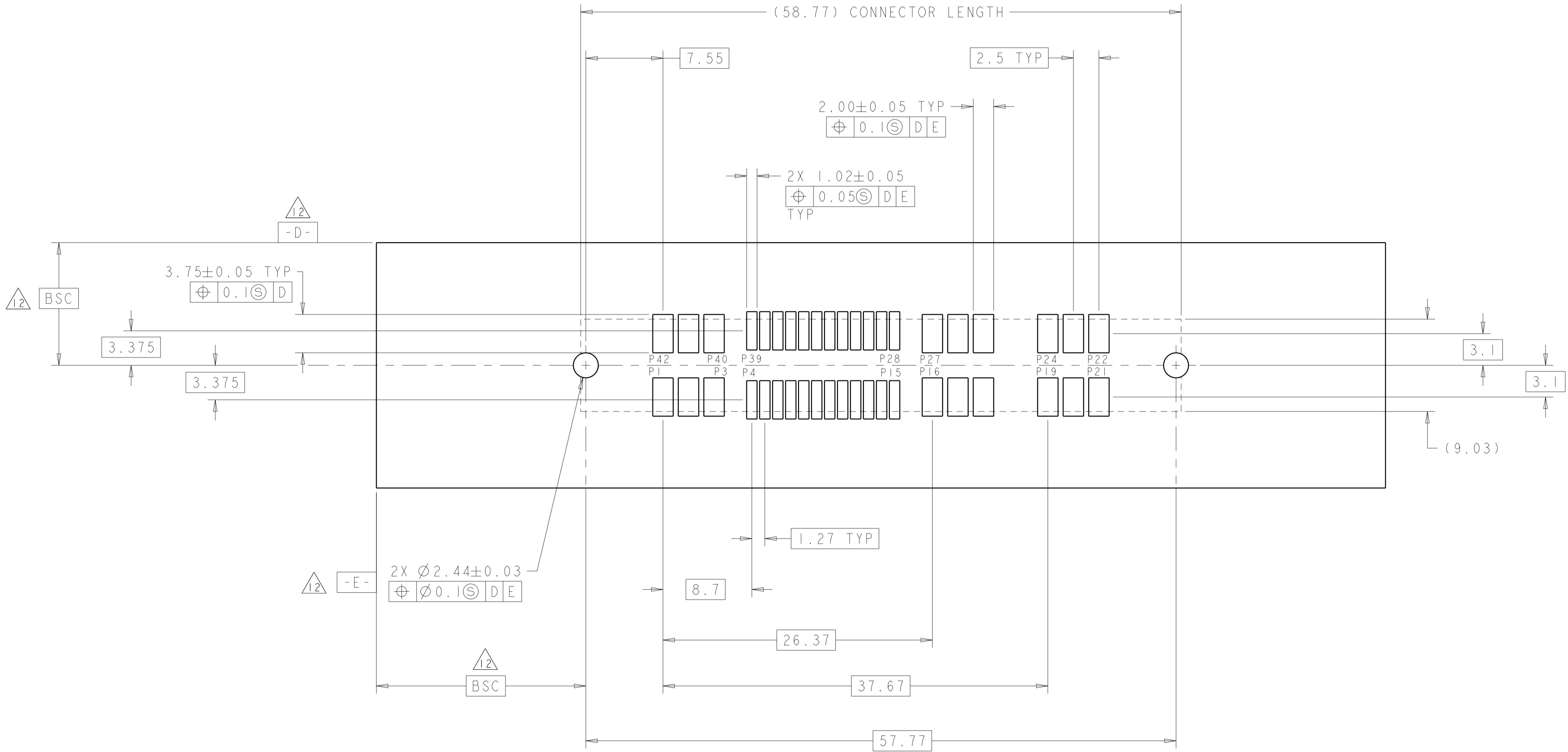
DETAIL N
2X TYPICAL
SCALE 10:1



RECOMMENDED PC BOARD KEEP OUT AREA
SCALE 3:1

| | | | | |
|--|--|--------------------|-----------|---|
| THIS DRAWING IS A CONTROLLED DOCUMENT. | | DWN: G. PETERS/DTI | 25MAY2006 | STE TE Connectivity |
| DIMENSIONS: mm | | CHK: N. REESER | 25MAY2006 | |
| TOLERANCES UNLESS OTHERWISE SPECIFIED: | | APVD: N. REESER | 25MAY2006 | NAME: SOCKET CONNECTOR WITH LATCH, SMT P2-S24-P4 MINI CROWN EDGE |
| 0 PLC ±.5 | | PRODUCT SPEC | | |
| 1 PLC ±.5 | | APPLICATION SPEC | | SIZE: CAGE CODE: DRAWING NO: A100779C=1926155 |
| 2 PLC ±.25 | | RESTRICTED TO | | |
| 3 PLC ±.25 | | WEIGHT | | SCALE: 5:1 SHEET 3 OF 5 REV: G2 |
| 4 PLC ±.25 | | CUSTOMER DRAWING | | |
| ANGLES ±.2 | | | | |
| FINISH | | | | |

| LOC | | DIST | | REVISIONS | | | | |
|-----|-----|------|-----|-----------|-------------|------|-----|------|
| P | LTN | DATE | DNM | APVD | DESCRIPTION | DATE | DNM | APVD |
| - | - | - | - | - | SEE SHEET 1 | - | - | - |



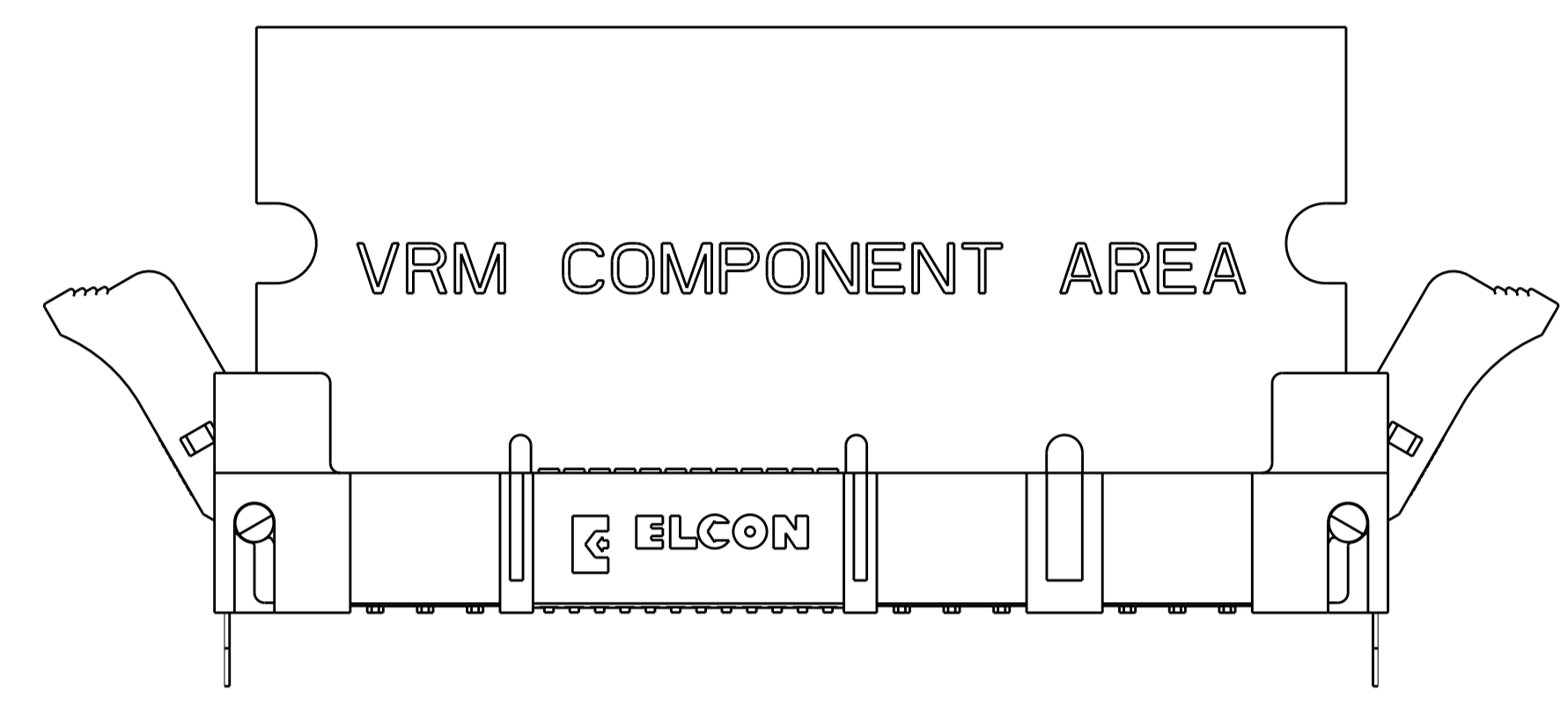
RECOMMENDED SOLDER LAND GUIDELINE
 AS VIEWED FROM CONNECTOR SIDE
 SCALE 4:1

| | | | |
|--|--|--|---|
| THIS DRAWING IS A CONTROLLED DOCUMENT. | | DWN G. PETERS/DTI 25MAY2006 | TE Connectivity |
| DIMENSIONS: mm | | CHK - | |
| | | TOLERANCES UNLESS OTHERWISE SPECIFIED: | NAME SOCKET CONNECTOR WITH LATCH, SMT P2-S24-P4 MINI CROWN EDGE |
| MATERIAL - | | FINISH - | APVD W. REESER 25MAY2006 |
| CUSTOMER DRAWING | | SCALE 5:1 | RESTRICTED TO |
| | | SHEET 4 OF 5 | REV G2 |

| LOC | DIST | REVISIONS | | | | | |
|-----|------|-----------|-----|-------------|------|-----|------|
| | | P | LTN | DESCRIPTION | DATE | DWN | APVD |
| GP | 00 | - | - | SEE SHEET 1 | - | - | - |
| | | | | | | | |
| | | | | | | | |

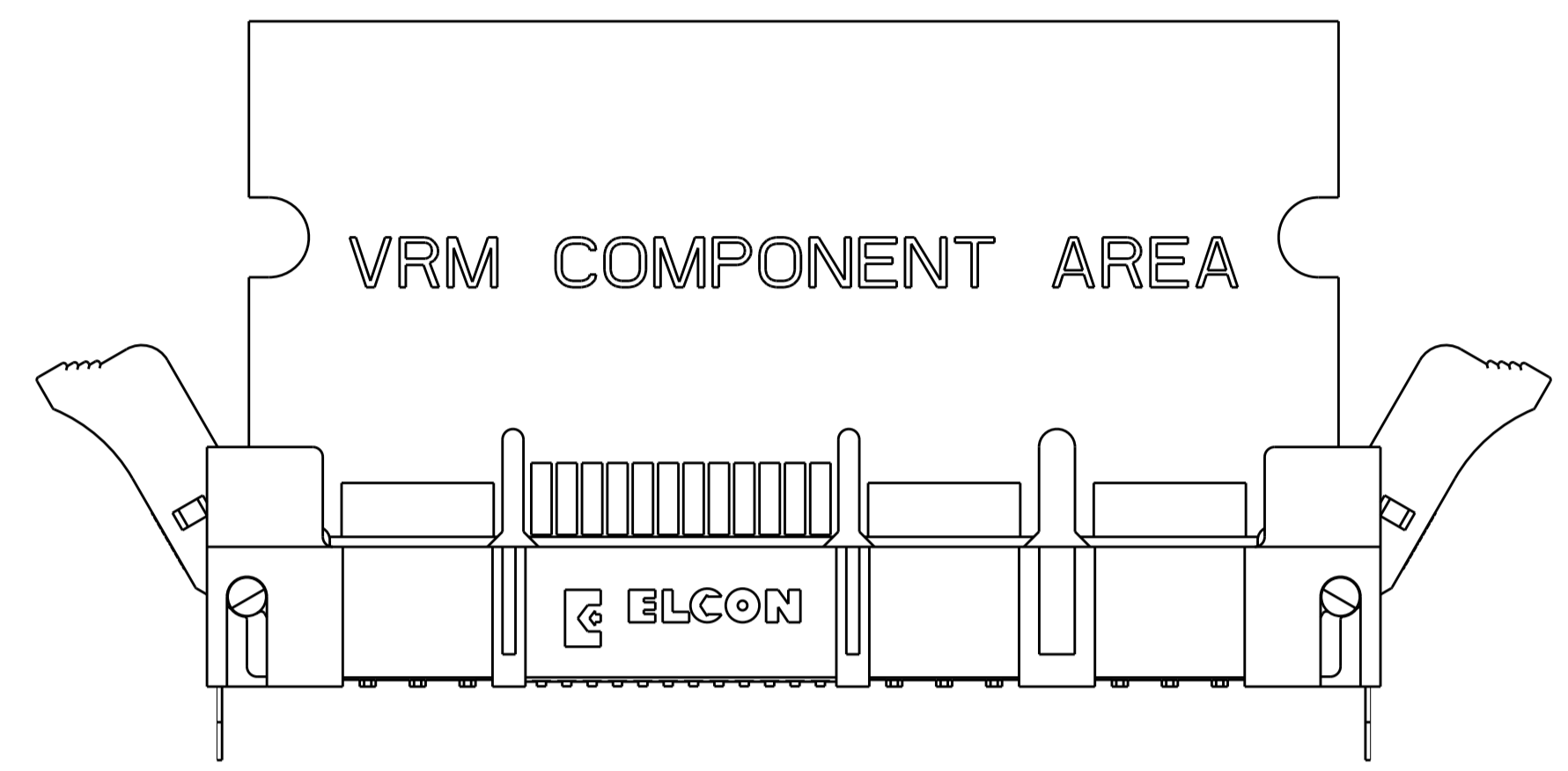
MODULE EXTRACTION GUIDE

STEP 1



THE MODULE IS REMOVED FROM THE SOCKET FIRST BY SIMULTANEOUSLY ROTATING EACH LATCH APPROXIMATELY 30 DEGREES AWAY FROM THE HOUSING END. AT FULL ROTATION OF THE LATCH, THE MODULE IS NOT COMPLETELY DISLODGED. THE MODULE WILL STILL BE APPROXIMATELY 15% ENGAGED.

STEP 2



THE COMPLETE REMOVAL OF THE MODULE WILL BE DONE BY PULLING IT STRAIGHT UP THROUGH THE BOARD SUPPORT TOWERS WITH TWO HANDS TO INSURE VERTICAL REMOVAL.

| | | | |
|--|--|------------------------------|--|
| THIS DRAWING IS A CONTROLLED DOCUMENT. | | DWN: G. PETERS/DTI 25MAY2006 | TE Connectivity |
| DIMENSIONS: mm | | CHK: - | |
| TOLERANCES UNLESS OTHERWISE SPECIFIED: 0 PLC ±.1 1 PLC ±.5 2 PLC ±.25 3 PLC ±.1 4 PLC ±.1 ANGLES ±.2 | | APVD: N. REESER 25MAY2006 | NAME: SOCKET CONNECTOR WITH LATCH, SMT P2-S24-P4 MINI CROWN EDGE |
| | | PRODUCT SPEC: - | RESTRICTED TO: - |
| MATERIAL: - | | APPLICATION SPEC: - | SIZE: A1 |
| FINISH: - | | WEIGHT: - | CAGE CODE: 1926155 |
| CUSTOMER DRAWING | | SCALE: 1:1 | SHEET 5 OF 5 REV: G2 |