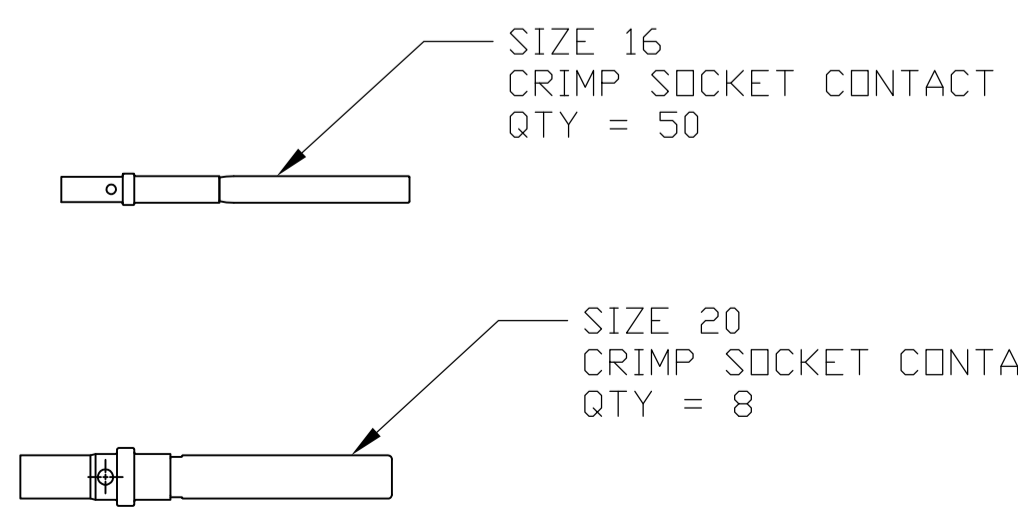
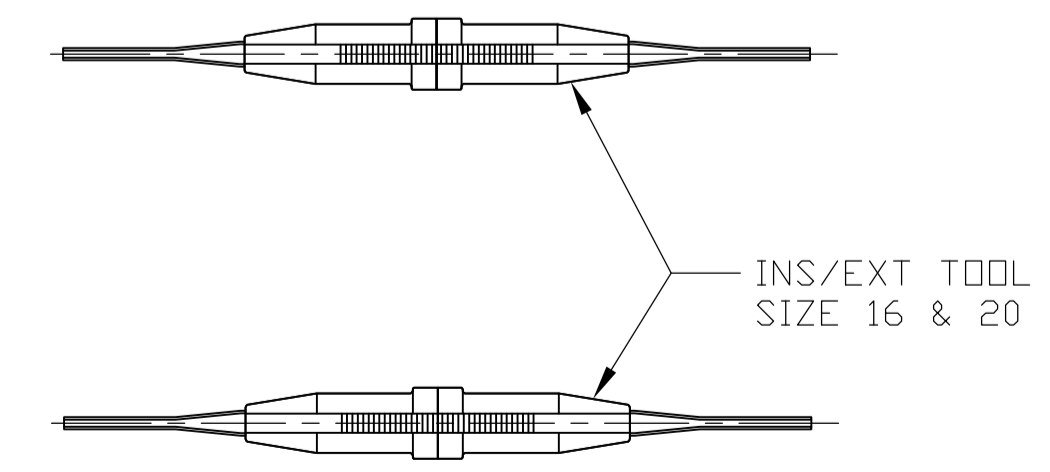
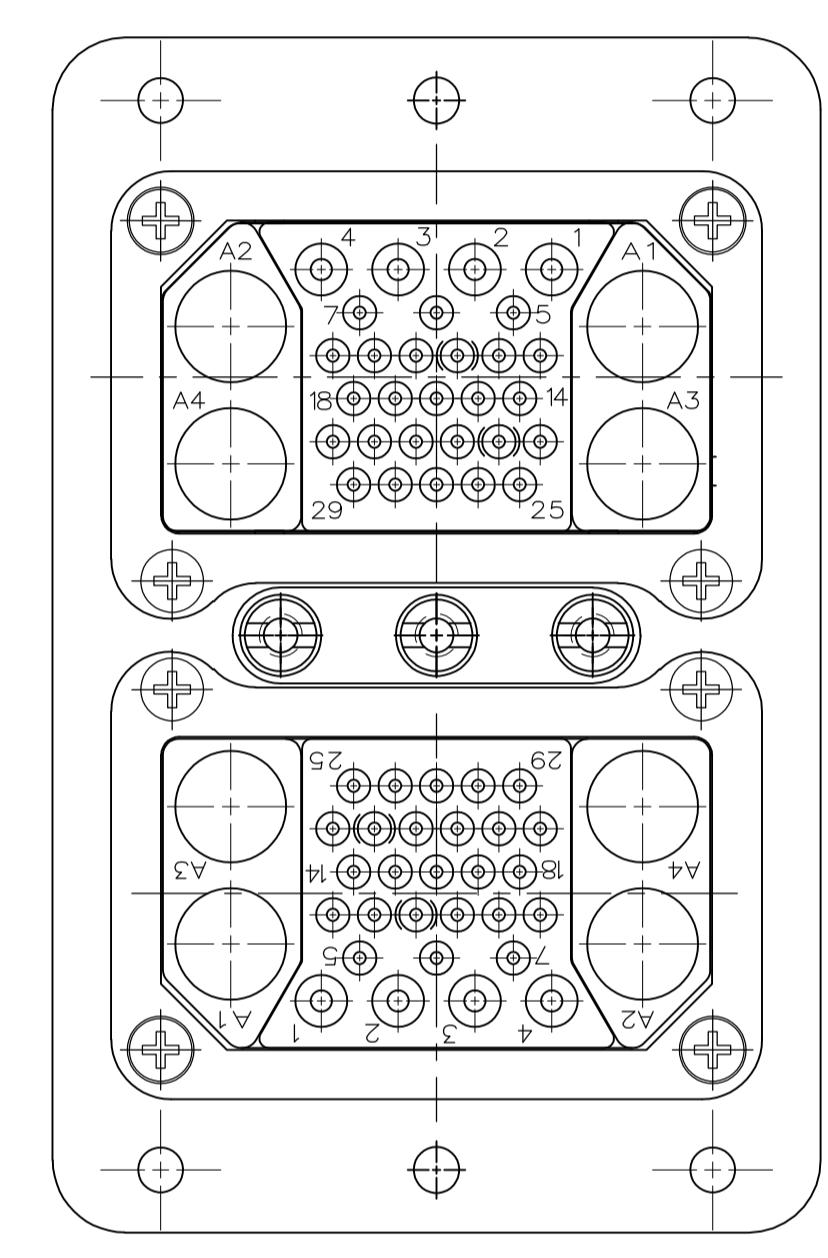
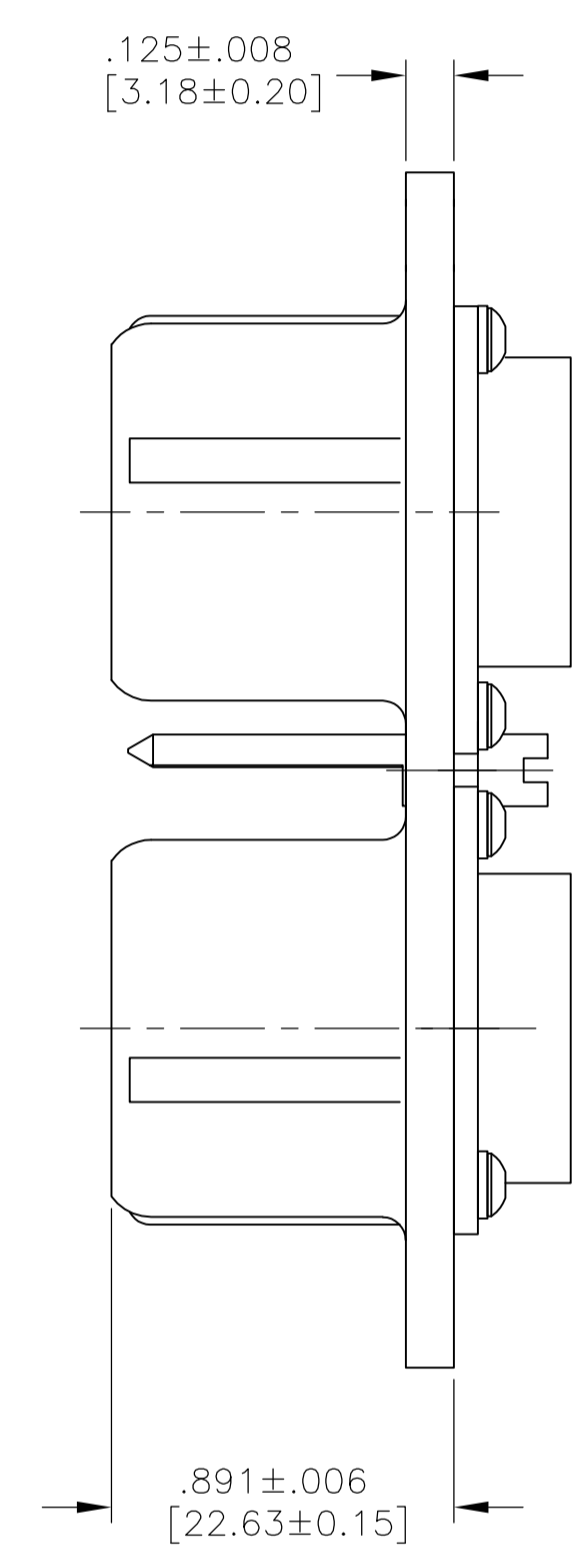
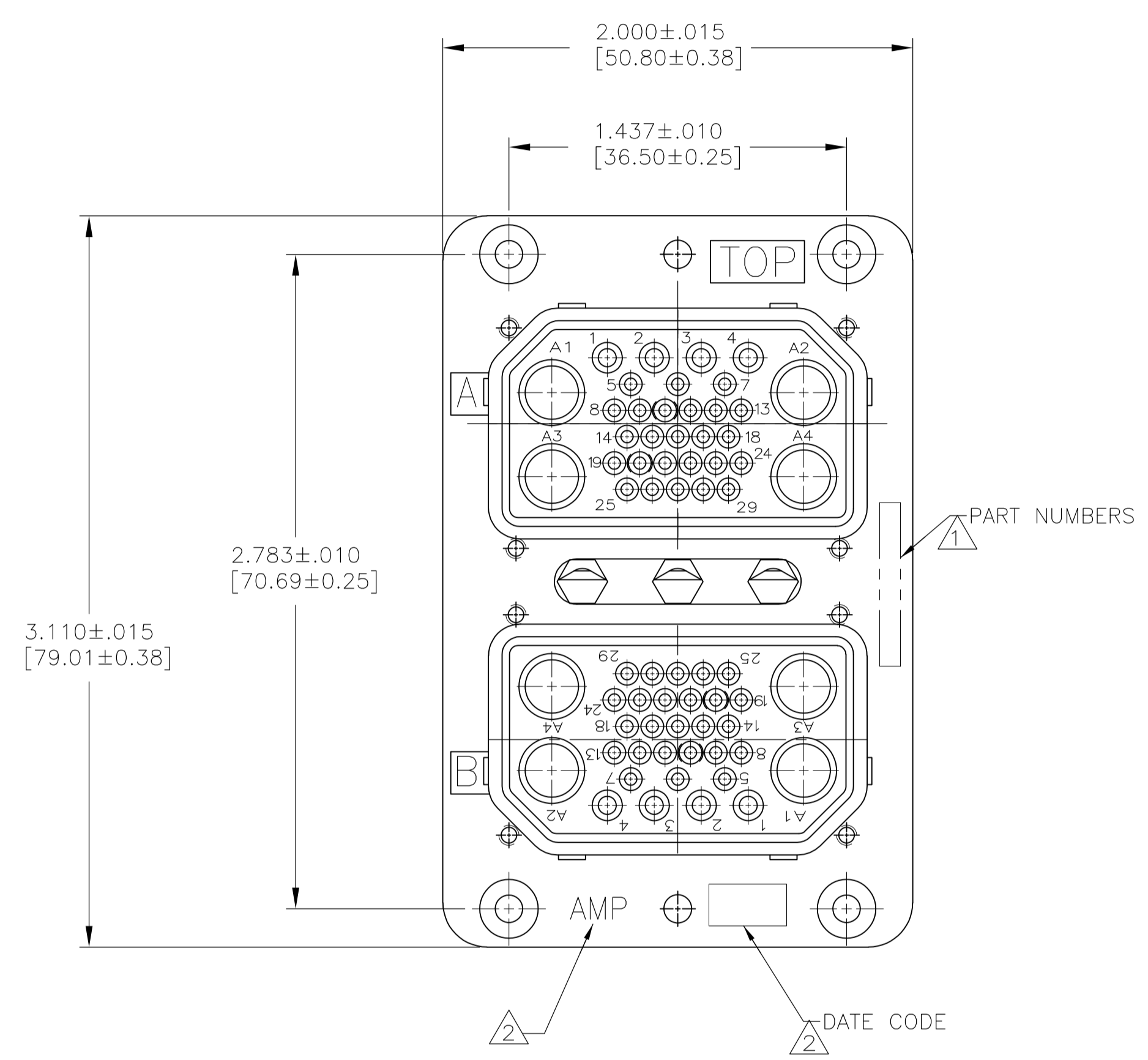


LOC		DIST		REVISIONS			
P	LTR	DESCRIPTION	DATE	DNW	APVD		
A		RELEASED	3-13-14	CT	DE		

1. TE PART NO. AND DESCRIPTIVE PART NO. MARKED IN THESE AREAS.
2. "AMP" AND DATE CODE MARKED IN THIS AREA.
3. KEYING ASSEMBLED IN THE "01" POSITION.
4. MATERIAL AND FINISH:
SHELL: DIE CAST ALUMINUM ALLOY PER SPEC QQ-A-591.
STANDARD FINISH: CADMIUM PLATE PER QQ-P-416, TYPE I, CLASS 2 YELLOW CHROMATE CONVERSION.
INSERT RETENTION PLATE: ALUMINUM ALLOY, BLUE ANODIZE PER MIL-A-8625.
SCREWS AND WASHERS: STAINLESS STEEL, PASSIVATED.
POLARIZING POSTS: STAINLESS STEEL, PASSIVATED.
POLARIZING NUTS: BRASS, CADMIUM PLATED.



1218528-1
PART NUMBER

THIS DRAWING IS A CONTROLLED DOCUMENT.		DNW C.C.THOMAS 3-13-14	TE Connectivity	
DIMENSIONS: INCHES [MM]		CHK D.FABY 3-13-14	NAME ASSY,ARINC 404,RM2P33C4S33C4S-0001 (200)	
TOLERANCES UNLESS OTHERWISE SPECIFIED: 0 PLC ± - 1 PLC ± - 2 PLC ± - 3 PLC ± .005 [0.13] 4 PLC ± - ANGLES ± -		APVD D.FABY 3-13-14	APPLICATION SPEC	
MATERIAL		SIZE A1	CAGE CODE 00779	DRAWING NO 1218528
FINISH		WEIGHT	RESTRICTED TO	
		CUSTOMER DRAWING		SCALE 2:1 SHEET 1 OF 1 REV A