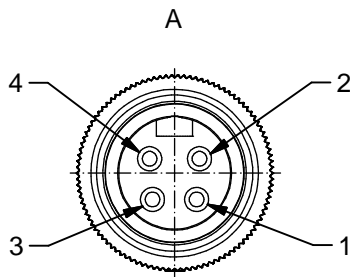


Technical specification:

Rated voltage: IEC 60664-1	300 V
Overvoltage category: IEC 60664-1	2
Overvoltage: IEC 60664-1	2,7 kV
Current rating: IEC 60512-3 at 40°C	0,75mm ² 1,5mm ² 8 A 10 A
Insulation resistance: IEC 60512	>=100 MΩ
Pollution degree: IEC 60664-1	3/2
Degree of protection: IEC 60529	IP 68, in mated condition
Temperature range:	-30°C ... +80°C
Mating cycles: IEC 60512-9a	>=100
Termination:	crimped

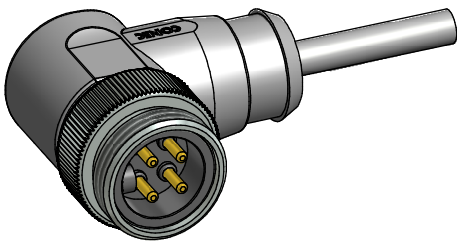


Contact assignment:

- 1 ■ brown
- 2 ■ white
- 3 ■ blue
- 4 ■ black

Materials:

Contact:	CuZn
Contact plating:	Nickel, gold plated
Contact carrier:	TPU, UL 94
Coupling screw:	CuZn, nickel plated
Moulding body:	TPU, UL 94, grey



Part no:	Description:	Length L:	Cable:
41-01056	SAL - 7/8 - RSW4 - 2 / A3	2m	PVC, UL 2464, grey, 4x0,75mm ² Cable: 781-A37400
41-01057	SAL - 7/8 - RSW4 - 3 / A3	3m	
41-01058	SAL - 7/8 - RSW4 - 5 / A3	5m	
41-01059	SAL - 7/8 - RSW4 - 10 / A3	10m	
41-xxxxx	SAL - 7/8 - RSW4 - ... / A3	x	
41-01153	SAL - 7/8 - RSW4 - 2 / A3 / 150	2m	PVC, UL 2464, grey, 4x1,50mm ² Cable: 781-A3840G
41-01154	SAL - 7/8 - RSW4 - 3 / A3 / 150	3m	
41-01155	SAL - 7/8 - RSW4 - 5 / A3 / 150	5m	
41-01156	SAL - 7/8 - RSW4 - 10 / A3 / 150	10m	
41-xxxxx	SAL - 7/8 - RSW4 - ... / A3 / 150	x	

D see data sheet cable

DO NOT ALTER CAD DRAWING BY HAND Directive 2011/65/EU RoHS compliant	Index: d 24.04.14 MG Ä5178 Cable 781-A38400 superseded by 781-A3840G, data sheet revised, temperature range: IEC removed	dim. in mm		title: Male connector 7/8" angled	
		date	name		
	tolerance of cable: L ≤ 4m: L + 40mm L > 4m: L + 1%	drawn	10.10.07	Franz	dwg no: 41K1A307
	general tolerance: 0 ± 0,50mm 0,0 ± 0,25mm 0,00 ± 0,10mm	appd.	10.10.07	Mankopf	
	CONEC ®			part no:	see table

THIS DRAWING MAY NOT BE COPIED OR REPRODUCED IN ANY WAY, AND MAY NOT BE PASSED ON TO A THIRD PARTY WITHOUT WRITTEN PERMISSION. OWNERSHIP AND COPYRIGHT OF CONEC GmbH