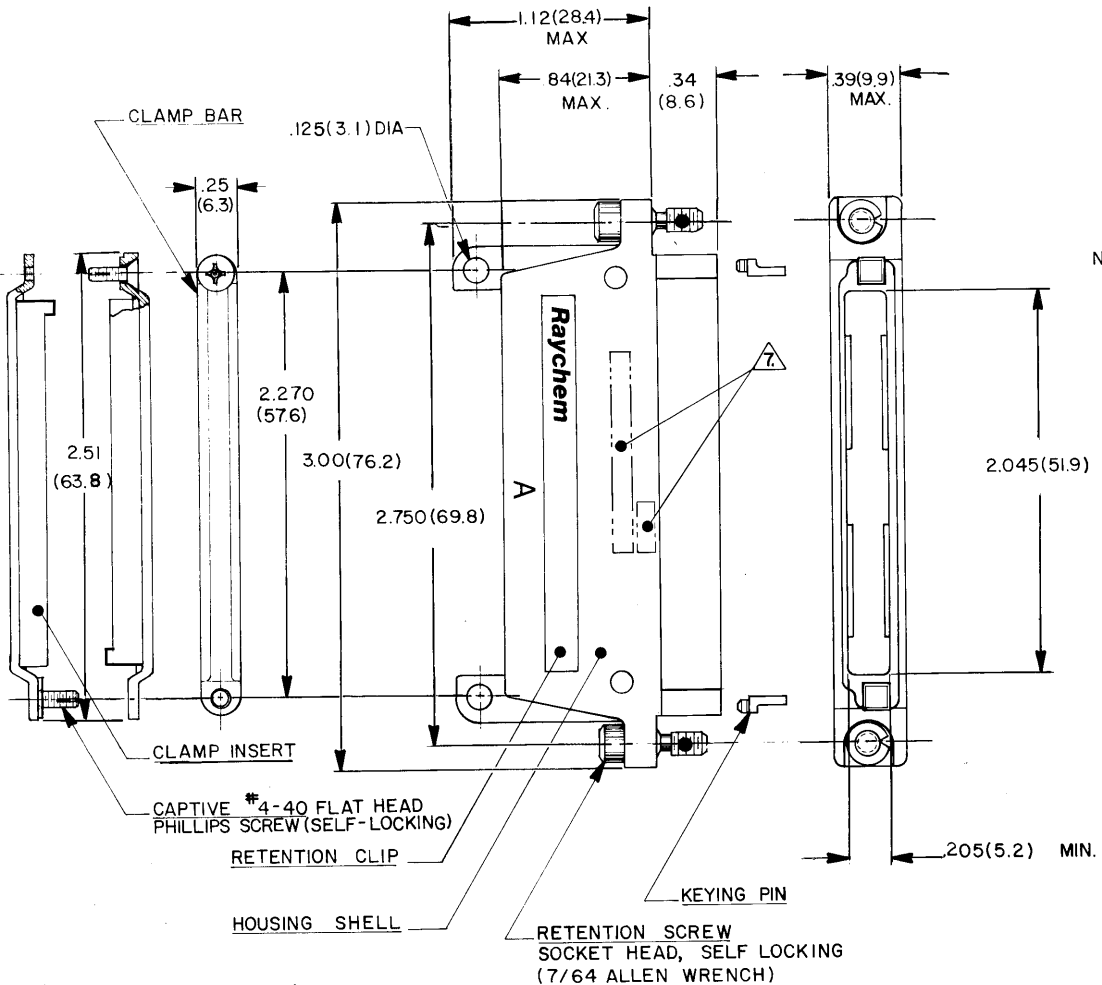


DATE	REV	BY	APP	DATE	APPROVED
	A	CHANGE PER	DCO 00817	10-11	Hub
	B	REV PER	ECO 12-020967	CT	12-12 KH



NOTES:

- MATERIAL:
 - 1-A. HOUSING SHELL; ALUMINUM ALLOY PER QQ-A-591.
 - 1-B. RETENTION SCREW; STAINLESS STEEL PER QQ-S-763 300 SERIES.
 - 1-C. RETENTION CLIP; COPPER ALLOY I72 PER QQ-C-533.
 - 1-D. KEYING PIN; POLYARYLENE THERMOPLASTIC, MOLDED
 - 1-E. CLAMP BAR; STAINLESS STEEL PER QQ-S-763 300 SERIES.
 - 1-F. CLAMP INSERT; SILICONE ELASTOMER PER ZZ-R-765.
 - 1-G. CAPTIVE SCREW; STAINLESS STEEL PER QQ-S-763 300 SERIES.
 - FINISH:
 - 2-A. HOUSING SHELL; NICKEL PLATED PER MIL-C-26074, CLASS 3, GRADE B.
 - 2-B. RETENTION SCREW; PASSIVATED PER QQ-P-35.
 - 2-C. RETENTION CLIP; NICKEL PLATED PER MIL-C-26074, CLASS 2, GRADE B.
 - 2-D. CLAMP BAR; PASSIVATED PER QQ-P-35.
 - 2-E. CAPTIVE SCREW; PASSIVATED PER QQ-P-35.
 - HOUSING MEETS THE REQUIREMENTS OF **Raychem** SPECIFICATION D-6014.
 - FOR MOUNTING/MATING AND KEYING INFORMATION, SEE **Raychem** DRAWING D652-0012.
 - (2) KEYING PINS ARE SUPPLIED NOT INSTALLED WITH EACH PLUG.
 - DUST COVER SUPPLIED INSTALLED WITH EACH PLUG.
- Raychem** PART NO. MTC100-YH2-009 AND DATE CODE IS STAMPED APPROXIMATELY AS SHOWN. © Raychem Corporation 1979

WEIGHT (MAX)	LBS.	GRAMS
	.0728	33.01

9 CONFIGURATION CONTRON PER ES 71001 APPLIES.

CONNECTOR SPECIFICATION CONTROL DRAWING

UNLESS OTHERWISE SPECIFIED DIMENSIONS ARE IN INCHES BRACKETED DIMENSIONS () ARE METRIC AND TOLERANCES ARE: .XXX : ± .005 (0.1MM) .XX : ± .02 (0.5MM) X : ±	DRAWN	SA LOPEZ	8/2/79	Raychem	RAYCHEM CORPORATION 300 CONSTITUTION DRIVE MENLO PARK, CALIFORNIA 94025		
	CHECKED		8-2-79		TITLE	PLUG HOUSING 2 INCH WITH CABLE CLAMP	
	APPROVED		8-2-79		MTC100 SERIES - CONDUCTIVE FINISH		
	APPROVED		8-2-79	SIZE	CODE IDENT	DWG. NO.	
				C	NO. 06090	MTC100-YH2-009	
	PROJECT	6448-H008		WEIGHT		SHEET 1 OF 1	

If this document is printed it becomes uncontrolled. Check with the web for latest revision.

DO NOT SCALE THIS DRAWING

CONFIGURATION CONTROL