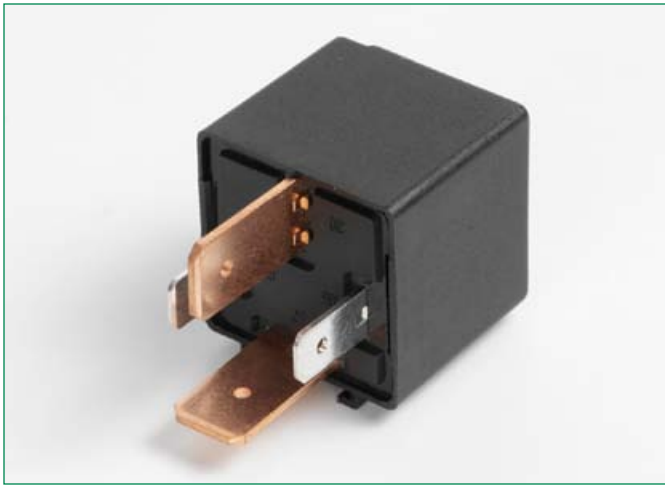


**STARTER Relays**

RoHS

Relays



**Specifications**

**Normally open relay**

**Color Case:** Black

**Color Base:** Black

**Packaging:**

Series Seriens	Pack Size
020405xxTXN	10
020405xxZ	200

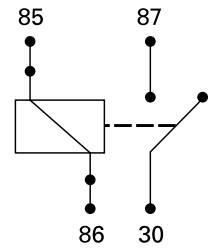
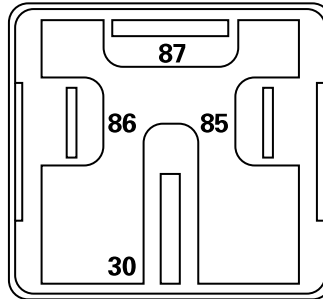
HOMOLOGATION IN ACCORDANCE WITH:

**E3** REGULATION N.10 ECE-ONU/02

**e3** EUROPEAN DIRECTIVE DIR.95/54 CE

Remote control switches for automotive applications available for 12V and 24V rated circuits.

Relais für Anwendungen im Automobilbereich, erhältlich für 12V und 24V Bordnetze.



**Pins nr 30 and 87 are 9.5 mm**

**Normally open relay**

Part Number Artikel-Nr.	Volt	Ampere	Feature Merkmal	Diagram/Schema
02040502_	12V	50A	-	A
02040501_	12V	70A	-	A
02040505_	24V	30A	-	A
02040504_	24V	40A	-	A
02040503_	24V	50A	-	A



**Bracket for ISO MINI Relay or STARTER Relay**

**Part Number  
Artikel-Nr.**

02040700\_

Series Seriens	Pack Size
020407xxTXN	10
020407xxZ	500

Last figure of part number = packaging code, see Section "Packaging Index," pg. 149.