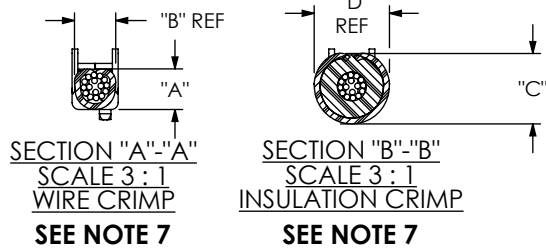


DO NOT SCALE FROM THIS PRINT



FOR CRIMP INSPECTION CALLOUTS

CONTACT/TERMINAL - LEAD STYLE - CRIMP - AWG - CABLE TYPE

SEE TABLE 1

FOR EXAMPLE, IF INSPECTING A CRIMP OF C-179-02-X WITH 26AWG DWC, THE CALLOUT FOR INSPECTION WOULD BE "C-179-02-CRIMP-26-DWC"

TABLE 5	
CUT CABLE	DEPTH/DIMENSION
BWC-01-04-01	0.55
BWC-01-16-01	1.34
BWC-02-10-01	0.71
BWC-02-32-01	1.18
BWC-05-14-01	0.31
UCA-01-01	0.47
UCA-02-01	0.55
UCA-03-01	0.63
ECA-01-01	0.79
ECA-02-02	0.79
SCTP-05-02	0.83
SCTP-08-02	1.10
LSPC-26100-05-P5-H	1.10
LSPC-26100-08-H	1.26
LSPC-26100-12-H	1.57
STCP-08-01	0.91
SCTP-12-01	1.06
SCTP-16-01	1.18
SCTP-24-01	1.42
LSPC-30100-05-P5-H	0.79
LSPC-26100-09	1.18
LSPC-26100-08-P5-H	1.18
LSPC-26100-08	1.10
LSPC-26100-12	1.26

TABLE 4: OVERALL LENGTH SUBTRACTORS (SEE NOTE 8)			
SERIES	"F"	"G"	"H"
MMSSX/ MMSDX	0.250	0.500	N/A
MMTSX/ MMTDX	0.464	N/A	0.714
MPSS	0.300	0.600	N/A
PMSSX/ PMSDX	0.479	0.958	N/A
S2SDX	0.224	0.448	N/A
SFSSX/ SFSDX	0.249	0.498	N/A
T2SDX	0.375	0.750	0.600
TFSSX/ TFSDX	0.400	0.800	0.675
PESS	0.623	1.246	N/A
S1SSX/ S1SDX	0.110	0.220	N/A
SMSX	0.250	0.500	N/A
MPCC	SIGNAL WIRE	0.113	0.226
	POWER WIRE	0.312	0.624

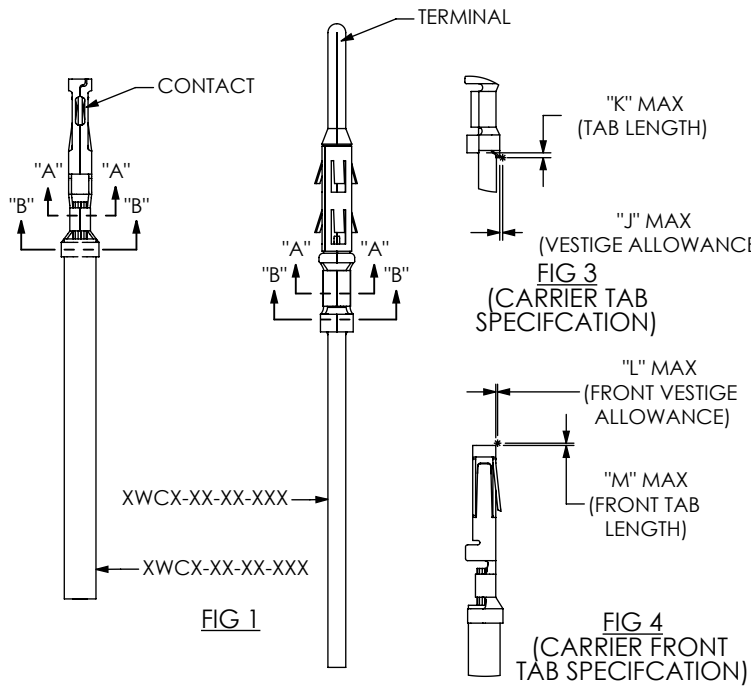
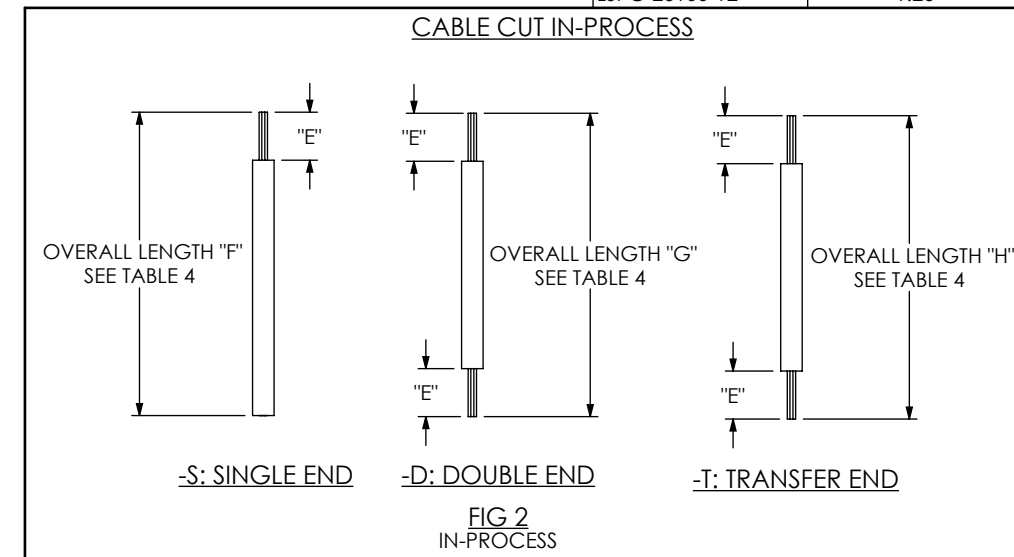


TABLE 6 TOLERANCE	
CONTACT/TERMINAL	"C"
T-C114-2426-X	+/- .002
T-C114-2830-X	+/- .002
C-281-2426-XX	+/- .002
C-C393-2426-X	+/- .002
C-C393-2830-X	+/- .002



- NOTES:
1. REPRESENTS A CRITICAL DIMENSION.
 2. ALL CRIMP AND STRIP DIMENSIONS SHOWN SHALL SUPERCEDE ANY EQUIVALENT SPECIFICATIONS THAT ARE SUPPLIED BY TOOLING MANUFACTURER.
 3. FOR LENGTHS LESS THAN 12 IN, TOLERANCE SHALL BE +/- .125. FOR OTHER LENGTHS, TOLERANCE SHALL BE +/- .2%.
 4. NOTE DELETED
 5. PULL FORCE MUST MEET REQUIRED TABLE 1 SPECIFICATION FOR WIRE GAUGE BEING USED.
 6. THE "E" TOLERANCE +/- .020 FOR C-310 AUTOMATED CUT/STRIP PROCESS.
 7. CRIMP TOLERANCE FOR "A"-MA IS +/- .001, "A"-HT IS +/- .002 AND "C" IS BLOCK TOLERANCE, UNLESS OTHERWISE NOTED IN TABLE 6.
 8. CUT LENGTH IS ASSEMBLY LENGTH MINUS OVERALL LENGTH SUBTRACTOR.

UNLESS OTHERWISE SPECIFIED, DIMENSIONS ARE IN INCHES.

TOLERANCES ARE:
 DECIMALS ANGLES
 .XX: ±.01 [.3] 2°
 .XXX: ±.005 [.13]
 .XXXX: ±.0020 [.051]

PROPRIETARY NOTE
 THIS DOCUMENT CONTAINS CONFIDENTIAL AND PROPRIETARY INFORMATION AND ALL DESIGN, MANUFACTURING, REPRODUCTION, USE, PATENT RIGHTS AND SALES RIGHTS ARE EXPRESSLY RESERVED BY SAMTEC, INC. THIS DOCUMENT SHALL NOT BE DISCLOSED, IN WHOLE OR PART, TO ANY UNAUTHORIZED PERSON OR ENTITY NOR REPRODUCED, TRANSFERRED OR INCORPORATED IN ANY OTHER PROJECT IN ANY MANNER WITHOUT THE EXPRESS WRITTEN CONSENT OF SAMTEC, INC.



520 PARK EAST BLVD, NEW ALBANY, IN 47150
 PHONE: 812-944-6733 FAX: 812-948-5047
 e-Mail: info@SAMTEC.com code: 55322

DO NOT SCALE DRAWING SHEET SCALE: 1:0.571429

DESCRIPTION:	CRIMP/STRIP SPECIFICATIONS
DWG. NO.	CRIMP-SPECIFICATIONS
BY:	D.SCHMELZ 10-11-2010
	SHEET 1 OF 5

TABLE 1: CRIMP AND STRIP DIMENSIONS

CONTACT/ TERMINAL	AWG	CABLE	"A"	"B"	"C"	"D"	"E" (Strip Length)	"K" MAX (Tab Length)	"J" MAX (Vestige Length)	"M" MAX (Front Tab Length)	"L" MAX (Front Vestige Length)	PULL FORCE MIN (Lbs)
			IN	IN	IN	IN	IN	IN	IN	IN	IN	IN
C-169-02-XX-X	-24	DWC-24-10-300	.0360	.0580	.073	.075	.128	.0200	.0020	N/A	N/A	5
	-22	DWC-22-10-300	.0390	.0580	.075	.075	.128	.0200	.0020	N/A	N/A	8
	-20	DWC-20-10-300	.0410	.0580	.087	.075	.128	.0200	.0020	N/A	N/A	13
C-169-03-XX-X	-20	DWC-20-10-600	.0470	.0740	.120	.135	.115	.0200	.0020	N/A	N/A	13
	-18	DWC-18-10-600	.0520	.0740	.125	.135	.115	.0200	.0020	N/A	N/A	20
	-18	*DWCT-18-01-TC	.0520	.0740	.116	.135	.115	.0200	.0020	N/A	N/A	20
	-16	DWC-16-10-600	.0620	.0740	.135	.135	.128	.0200	.0020	N/A	N/A	30
C-169-04-XX-X	-24	DWCT-24-01-TC	.0380	.0580	.054	.064	.128	.0200	.0020	N/A	N/A	5
C-179-02-X	-30	DWC-30-10-300	.0250	.0430	.052	.057	.133	.0120	.0020	N/A	N/A	1.5
	-28	DWC-28-10-300	.0260	.0430	.052	.057	.133	.0120	.0020	N/A	N/A	2
	-26	DWC-26-10-300	.0270	.0430	.061	.057	.133	.0120	.0020	N/A	N/A	3
C-179-03-X	-24	DWC-24-10-300	.0310	.0570	.075	.075	.128	.0120	.0020	N/A	N/A	5
	-22	DWC-22-10-300	.0340	.0570	.081	.075	.128	.0120	.0020	N/A	N/A	8
	-20	DWC-20-10-300	.0360	.0570	.083	.075	.128	.0120	.0020	N/A	N/A	13
	-20	DWCT-20-01-TC	.0360	.0570	.081	.076	.128	.0120	.0020	N/A	N/A	13
	-24	DWCT-24-01-TC	.0310	.0570	.070	.075	.128	.0120	.0020	N/A	N/A	5
	-24	BWC-02-XX-01	.0310	.0570	.075	.075	.128	.0120	.0020	N/A	N/A	5
C-179-04-X	-30	DWCT-30-01-TC	.0250	.0430	.047	.056	.128	.0120	.0020	N/A	N/A	1.5
	-28	DWCT-28-01-TC	.0260	.0430	.048	.056	.128	.0120	.0020	N/A	N/A	2
C-198-2024-01-X	-24	DWC-24-10-300	.0280	.0580	.072	.063	.098	.0120	.0020	N/A	N/A	5
	-22	DWC-22-10-300	.0310	.0580	.072	.066	.098	.0120	.0020	N/A	N/A	8
	-20	DWC-20-10-300	.0360	.0580	.082	.066	.098	.0120	.0020	N/A	N/A	13
T-1R31-2024-01-XX	-24	DWC-24-10-300	.0280	.0580	.072	.063	.098	.0120	.0020	N/A	N/A	5
		BWC-02-XX-01	.0280	.0580	.067	.063	.098	.0120	.0020	N/A	N/A	5
	-22	DWC-22-10-300	.0300	.0580	.072	.066	.098	.0120	.0020	N/A	N/A	8
	-20	DWC-20-10-300	.0360	.0580	.082	.066	.098	.0120	.0020	N/A	N/A	13
C-198-2628-01-X	-28	DWC-28-10-300	.0250	.0480	.055	.054	.098	.0120	.0020	N/A	N/A	2
	-26	DWC-26-10-300	.0250	.0480	.060	.062	.098	.0120	.0020	N/A	N/A	3
T-1R31-2428-01-XX	-28	DWC-28-10-300	.0250	.0480	.055	.054	.098	.0120	.0020	N/A	N/A	2
	-26	DWC-26-10-300	.0260	.0480	.060	.062	.098	.0120	.0020	N/A	N/A	3
C203-2830-XX	-30	DWCT-30-01-TC	.0170	.0300	.037	.039	.105	.0075	.0030	.0020	.0010	1.5
	-30	DWC-30-10-300	.0170	.0300	.045	.038	.105	.0075	.0030	.0020	.0010	1.5
	-28	DWC-28-10-300	.0180	.0300	.045	.038	.105	.0075	.0030	.0020	.0010	2
	-28	DWCT-28-01-TC	.0180	.0300	.037	.039	.105	.0075	.0030	.0020	.0010	2
	-28	BWC-05-XX-01	.0180	.0300	.045	.038	.095	.0075	.0030	.0020	.0010	2
C-246-01-X	-16	DWC-16-10-600	.0680	.1100	.145	.160	.197	.0300	.0030	N/A	N/A	30
	-14	DWC-14-10-600	.0750	.1100	.160	.160	.197	.0300	.0030	N/A	N/A	50

* FOR EXISTING CUSTOMERS ONLY

PROPRIETARY NOTE
 THIS DOCUMENT CONTAINS CONFIDENTIAL AND PROPRIETARY INFORMATION AND ALL DESIGN, MANUFACTURING, REPRODUCTION, USE, PATENT RIGHTS AND SALES RIGHTS ARE EXPRESSLY RESERVED BY SAMTEC, INC. THIS DOCUMENT SHALL NOT BE DISCLOSED, IN WHOLE OR PART, TO ANY UNAUTHORIZED PERSON OR ENTITY NOR REPRODUCED, TRANSFERRED OR INCORPORATED IN ANY OTHER PROJECT IN ANY MANNER WITHOUT THE EXPRESS WRITTEN CONSENT OF SAMTEC, INC.

DO NOT SCALE DRAWING

 SHEET SCALE: 1.75:1



DESCRIPTION:
 CRIMP/STRIP SPECIFICATIONS

DWG. NO.
 CRIMP-SPECIFICATIONS

BY: D.SCHMELZ 10-11-2010 SHEET 2 OF 5

TABLE 1: CRIMP AND STRIP DIMENSIONS (CONTINUED)

CONTACT/TERMINAL (Tab Burr)	AWG	CABLE	"A"	"B"	"C"	"D"	"E" (STRIP LENGTH)	"K" MAX (Tab Length)	"J" MAX (Vestige Length)	"M" MAX (Front Tab Length)	"L" MAX (Front Vestige Length)	PULL FORCE MIN (Lbs)
			IN	IN	IN	IN	IN	IN	IN	IN	IN	IN
C-281-2830-XX	-30	DWC-30-XX-300	.0170	.0330	.035	.042	.125	.0075	.0010	.0020	.0020	1.5
	-30	DWCT-30-01-TC	.0170	.0330	.035	.042	.125	.0075	.0010	.0020	.0020	1.5
	-28	DWC-28-XX-300	.0180	.0330	.040	.042	.125	.0075	.0010	.0020	.0020	2
	-28	DWCT-28-01-TC	.0180	.0330	.040	.042	.125	.0075	.0010	.0020	.0020	2
C-281-2426-XX	-26	DWC-26-XX-300	.0230	.0350	.057	.055	.125	.0075	.0010	.0020	.0020	3
	-24	DWCT-24-01-TC	.0280	.0350	.055	.055	.125	.0075	.0010	.0020	.0020	5
	-24	DWC-24-XX-300/BWC-08-10-01	.0280	.0350	.064	.055	.125	.0075	.0010	.0020	.0020	5
CC20X-2024-01-XX	-22	DWC-22-10-300	.0310	.0580	.073	.066	.058	.0075	.0010	N/A	N/A	8
	-24	DWC-24-10-300	.0280	.0580	.071	.064	.098	.0075	.0010	N/A	N/A	5
CC62-1618-01-XX	-18	DWC-18-10-300	.0550	.0900	.160	.160	.148	.0250	.0030	N/A	N/A	20
	-16	DWC-16-10-300	.0560	.0950	.113	.118	.128	.0250	.0030	N/A	N/A	30
CT62-1618-01-XX	-18	DWC-18-10-300	.0550	.0900	.160	.160	.148	.0250	.0030	N/A	N/A	20
	-16	DWC-16-10-300	.0540	.0950	.113	.118	.128	.0250	.0030	N/A	N/A	30
CC62-2024-01-XX	-22	DWC-22-10-300/BWC-01-04-01/ BWC-01-16-01	.0380	.0660	.072	.087	.148	.0250	.0030	N/A	N/A	8
CT62-2024-01-XX	-22	DWC-22-10-300/BWC-01-04-01/ BWC-01-16-01	.0380	.0660	.072	.087	.148	.0250	.0030	N/A	N/A	8
C-198-2024-01-X	-24	BWC-02-XX-01	.0280	.0580	.055	.063	.128	.0120	.0020	N/A	N/A	5
C-310-1012-X	-10	DWC-10-10-600	.1130	.1360	.205	.225	.230 (SEE NOTE 6)	.0400	.0030	N/A	N/A	80
	-12	DWC-12-10-600	.1030	.1360	.198	.225	.230 (SEE NOTE 6)	.0400	.0030	N/A	N/A	70
C-309-01-XX	-28	DWCT-28-01-TC	.0165	.0277	.039	.032	.055	.0060	.0010	N/A	N/A	2
	-28	DWC-28-XX-300	.0170	.0277	.039	.032	.055	.0060	.0010	N/A	N/A	2
	-30	DWC-30-XX-300	.0160	.0277	.039	.032	.055	.0060	.0010	N/A	N/A	1.5
	-30	DWCT-30-01-TC	.0160	.0277	.039	.032	.055	.0060	.0010	N/A	N/A	1.5
C-383-2426-X	-24	DWC-24-100-300	.0280	.0450	.065	.070	.115	.0120	.0020	.0050	.0020	5
	-24	DWCT-24-01-TC	.0280	.0450	.058	.070	.115	.0120	.0020	.0050	.0020	5
	-26	DWC-26-100-300	.0270	.0450	.055	.070	.115	.0120	.0020	.0050	.0020	3
T-1M44-2830-XX	-30	DWC-30-10-300	.0170	.0300	.045	.038	.105	.0075	.0030	N/A	N/A	1.5
	-30	DWCT-30-01-TC	.0170	.0300	.037	.039	.105	.0075	.0030	N/A	N/A	1.5
	-28	BWC-05-14-01	.0200	.0300	.045	.038	.095	.0075	.0030	N/A	N/A	2
	-28	DWC-28-10-300	.0180	.0300	.045	.038	.105	.0075	.0030	N/A	N/A	2
	-28	DWCT-28-01-TC	.0180	.0300	.037	.039	.105	.0075	.0030	N/A	N/A	2
	-28	DWC-28-10-300	.0180	.0300	.045	.038	.105	.0075	.0030	N/A	N/A	2
T-1M74-01-X	-30	DWC-30-10-300	.0200	.0330	.045	.057	.128	.0090	.0010	N/A	N/A	1.5
	-28	DWC-28-10-300	.0210	.0330	.050	.057	.128	.0090	.0010	N/A	N/A	2
	-26	DWC-26-10-300	.0230	.0330	.055	.057	.128	.0090	.0010	N/A	N/A	3

PROPRIETARY NOTE
 THIS DOCUMENT CONTAINS CONFIDENTIAL AND PROPRIETARY INFORMATION AND ALL DESIGN, MANUFACTURING, REPRODUCTION, USE, PATENT RIGHTS AND SALES RIGHTS ARE EXPRESSLY RESERVED BY SAMTEC, INC. THIS DOCUMENT SHALL NOT BE DISCLOSED, IN WHOLE OR PART, TO ANY UNAUTHORIZED PERSON OR ENTITY NOR REPRODUCED, TRANSFERRED OR INCORPORATED IN ANY OTHER PROJECT IN ANY MANNER WITHOUT THE EXPRESS WRITTEN CONSENT OF SAMTEC, INC.

DO NOT SCALE DRAWING

SHEET SCALE: 1:75:1



520 PARK EAST BLVD, NEW ALBANY, IN 47150
 PHONE: 812-944-6733 FAX: 812-948-5047
 e-Mail: info@SAMTEC.com code: 55322

DESCRIPTION:
 CRIMP/STRIP SPECIFICATIONS

DWG. NO.
CRIMP-SPECIFICATIONS

BY: D.SCHMELZ 10-11-2010 SHEET 3 OF 5

TABLE 1: CRIMP AND STRIP DIMENSIONS (CONTINUED)

CONTACT/TERMINAL (Tab Burr)	AWG	CABLE	"A"	"B"	"C"	"D"	"E" (STRIP LENGTH)	"K" MAX (Tab Length)	"J" MAX (Vestige Length)	"M" MAX (Front Tab Length)	"L" MAX (Front Vestige Length)	PULL FORCE MIN
			IN	IN	IN	IN	IN	IN	IN	IN	IN	IN
T1M74-02-X	-24	DWCT-24-01-TC	.0270	.0430	.070	.075	.128	.0090	.0010	N/A	N/A	5
	-24	DWC-24-10-300	.0270	.0430	.075	.075	.128	.0090	.0010	N/A	N/A	5
	-22	DWC-22-10-300	.0310	.0430	.079	.075	.128	.0090	.0010	N/A	N/A	8
	-20	DWC-20-10-300	.0380	.0430	.083	.075	.128	.0090	.0010	N/A	N/A	13
	-20	DWCT-20-01-TC	.0380	.0430	.076	.075	.128	.0090	.0010	N/A	N/A	13
T1M74-03-X	-30	DWCT-30-01-TC	.0200	.0330	.042	.046	.128	.0090	.0010	N/A	N/A	1.5
	-28	DWCT-28-01-TC	.0220	.0330	.045	.046	.128	.0090	.0010	N/A	N/A	2
T-1M82-2830-XX	-30	DWC-30-XX-300	.0170	.0330	.035	.042	.125	.0075	.0010	N/A	N/A	1.5
	-30	DWCT-30-01-TC	.0170	.0330	.035	.042	.125	.0075	.0010	N/A	N/A	1.5
	-28	DWCT-28-01-TC	.0180	.0330	.040	.042	.125	.0075	.0010	N/A	N/A	2
	-28	DWC-28-XX-300	.0180	.0330	.040	.042	.125	.0075	.0010	N/A	N/A	2
T-1M82-2426-XX	-26	DWC-26-XX-300	.0230	.0330	.057	.055	.125	.0075	.0010	N/A	N/A	3
	-24	DWCT-24-01-TC	.0280	.0330	.055	.055	.125	.0075	.0010	N/A	N/A	5
	-24	DWC-24-XX-300/BWC-08-10-01	.0280	.0330	.066	.055	.125	.0075	.0010	N/A	N/A	5
C-394-2020-X	-20	DWC-20-10-300	.0380	.0550	.076	.071	.140	.0120	.0020	N/A	N/A	13
T-C114-2426-X	-24	BWC-MCP-24-12-02	.0240	.0380	.0380	.039	.075	.0075	.0010	N/A	N/A	5
	-24	DWC-24L-XX-300	.0240	.0380	.0380	.039	.075	.0075	.0010	N/A	N/A	5
	-24	DWCT-24-01-TC	.0240	.0380	.0380	.039	.075	.0075	.0010	N/A	N/A	5
	-26	DWCT-26-01-TC	.0220	.0380	.0380	.039	.075	.0075	.0010	N/A	N/A	3
T-C114-2830-X	-28	BWC-MCP-28-12-02	.0180	.0320	.0380	.039	.075	.0075	.0030	N/A	N/A	2
	-28	DWC-28-XX-300	.0180	.0320	.0380	.039	.075	.0075	.0030	N/A	N/A	2
	-30	DWC-30-XX-300	.0160	.0320	.0380	.039	.075	.0075	.0030	N/A	N/A	1.5
C-C393-2426-X	-24	BWC-MCP-24-12-02	.0240	.0380	.0380	.039	.075	.0075	.0010	N/A	N/A	5
	-24	DWC-24L-XX-300	.0240	.0380	.0380	.039	.075	.0075	.0010	N/A	N/A	5
	-24	DWCT-24-01-TC	.0240	.0380	.0380	.039	.075	.0075	.0010	N/A	N/A	5
	-26	DWCT-26-01-TC	.0220	.0380	.0380	.039	.075	.0075	.0010	N/A	N/A	3.0
C-C393-2830-X	-28	BWC-MCP-28-12-02	.0180	.0320	.0380	.039	.075	.0075	.0030	N/A	N/A	2
	-28	DWC-28-XX-300	.0180	.0320	.0380	.039	.075	.0075	.0030	N/A	N/A	2
	-30	DWC-30-XX-300	.0160	.0320	.0380	.039	.075	.0075	.0030	N/A	N/A	1.5
C-C396-3234-X	-32	DWCT-32-01-TC	.0120	.0210	.0280	.023	.060	.0030	.0030	.0030	.0010	1

PROPRIETARY NOTE
 THIS DOCUMENT CONTAINS CONFIDENTIAL AND PROPRIETARY INFORMATION AND ALL DESIGN, MANUFACTURING, REPRODUCTION, USE, PATENT RIGHTS AND SALES RIGHTS ARE EXPRESSLY RESERVED BY SAMTEC, INC. THIS DOCUMENT SHALL NOT BE DISCLOSED, IN WHOLE OR PART, TO ANY UNAUTHORIZED PERSON OR ENTITY NOR REPRODUCED, TRANSFERRED OR INCORPORATED IN ANY OTHER PROJECT IN ANY MANNER WITHOUT THE EXPRESS WRITTEN CONSENT OF SAMTEC, INC.

DO NOT SCALE DRAWING

SHEET SCALE: 1:75:1



520 PARK EAST BLVD, NEW ALBANY, IN 47150
 PHONE: 812-944-6733 FAX: 812-948-5047
 e-Mail: info@SAMTEC.com code: 55322

DESCRIPTION:
 CRIMP/STRIP SPECIFICATIONS

DWG. NO.
CRIMP-SPECIFICATIONS

BY: D.SCHMELZ 10-11-2010 SHEET 4 OF 5

TABLE 2						
CONTACT	AWG WIRE	HAND TOOLING	AUTO TOOLING		EXTRACTION AND REPAIR TOOLING	
			CAT 3000 & AMP G	MECAL BY STARN	CONTACT EXTRACTION TOOL	INSERTION TOOL
C310	10~12	CAT-HT-310-1012-14	CAT-MA-310-1012-FR-02	MECAL-MN-310-1012-FR	N/A	CAT-IN-PESS
CC69 and C169	16~20	CAT-HT-169-1620-13	CAT-MA-169-1620-FR-02	MECAL-MN-169-1620-FR	CAT-EX-169-01	N/A
	20~24	CAT-HT-169-2024-13	CAT-MA-169-2024-FR-01	MECAL-MN-169-2024-FR	CAT-EX-169-01	N/A
	24~26	N/A	CAT-MA-169-2424-FR-03	MECAL-MN-169-2424-FR	CAT-EX-169-01	N/A
CC79 and C179	20~24	CAT-HT-179-2030-13	CAT-MA-179-2024-FR-01	MECAL-MN-179-2024-FR	CAT-EX-179-01	N/A
	26~30	CAT-HT-179-2030-13	CAT-MA-179-2630-FR-01	MECAL-MN-179-2630-FR	CAT-EX-179-01	N/A
	28~30	N/A	CAT-MA-179-2830-FR-03	MECAL-MN-179-2830-FR	CAT-EX-179-01	N/A
CC20 and C198	20~24	N/A	CAT-MA-198-2024-FR-01	N/A	N/A	N/A
	26~28	N/A	CAT-MA-198-2628-FR-01	N/A	N/A	N/A
CT20 and T1R31	20~24	N/A	CAT-MA-198-2024-FR-01	N/A	N/A	N/A
	26~28	N/A	CAT-MA-198-2628-FR-01	N/A	N/A	N/A
CC62 and C194	16~18	N/A	CAT-MA-062-1618-FR-01	N/A	CAT-EX-062-01	N/A
	20~24	N/A	CAT-MA-062-2024-FR-01	N/A	CAT-EX-062-01	N/A
	20~24	N/A	CAT-MA-062-2024-FR-02	N/A	CAT-EX-062-01	N/A
	26~30	N/A	CAT-MA-062-2630-FR-01	N/A	CAT-EX-062-01	N/A
	26~30	N/A	CAT-MA-062-2630-FR-02	N/A	CAT-EX-062-01	N/A
CT62 and T1R29	16~18	N/A	CAT-MA-062-1618-FR-01	N/A	CAT-EX-062-01	N/A
	20~24	N/A	CAT-MA-062-2024-FR-01	N/A	CAT-EX-062-01	N/A
	20~24	N/A	CAT-MA-062-2024-FR-02	N/A	CAT-EX-062-01	N/A
	26~30	N/A	CAT-MA-062-2630-FR-01	N/A	CAT-EX-062-01	N/A
	26~30	N/A	CAT-MA-062-2630-FR-02	N/A	CAT-EX-062-01	N/A
CT03 and T1M44	28~30	CAT-HT-144-2830-12	CAT-MA-144-2830-FR-01	MECAL-MN-144-2830-FR	CAT-EX-169-01	N/A
CC03 and C203	28~30	CAT-HT-203-2830-12	CAT-MA-203-2830-FR-01	MECAL-MN-203-2830-FR	CAT-EX-169-01	N/A
CC46 and C246	14~16	CAT-HT-246-1416-14	CAT-MA-246-1416-FR-02	MECAL-MN-246-1416-FR	CAT-EX-MPSS-01	N/A
	C281	24~26	CAT-HT-281-2430-13	CAT-MA-281-2426-FR-01	MECAL-MN-281-2426-FR	CAT-EX-169-01
28~30		CAT-HT-281-2430-13	CAT-MA-281-2830-FR-01	MECAL-MN-281-2830-FR	CAT-EX-169-01	N/A
T1M74	20~24	CAT-HT-174-2030-13	CAT-MA-174-2024-FR-01	MECAL-MN-174-2024-FR	CAT-EX-74-01	N/A
	26~30	CAT-HT-174-2030-13	CAT-MA-174-2630-FR-01	MECAL-MN-174-2630-FR		N/A
	28~30	N/A	CAT-MA-174-2830-FR-03	MECAL-MN-174-2830-FR		N/A
T-1M82	24~26	CAT-HT-281-2430-13	CAT-MA-182-2426-FR-01	MECAL-MN-182-2426-FR	CAT-EX-169-01	N/A
	28~30	CAT-HT-281-2430-13	CAT-MA-182-2830-FR-01	MECAL-MN-182-2830-FR	CAT-EX-169-01	N/A
C309	28~30	CAT-HT-309-2830-12	CAT-MA-309-2830-FR-01	MECAL-MN-309-2830-FR	N/A	N/A
C383	24~26	CAT-HT-383-2426-13	CAT-MA-383-2426-FR-01	MECAL-MN-383-2426-FR	CAT-EX-74-01	N/A
C394	20	N/A	CAT-MA-394-2020-FR-01	MECAL-MN-394-2020-FR	N/A	N/A
C-C393 AND T-C114	24~26	CAT-HT-393-2430-13	CAT-MA-393-2426-FR-01	N/A	CAT-EX-MCX-8-01	N/A
	28~30	CAT-HT-393-2430-13	CAT-MA-393-2830-FR-01	MECAL-MN-393-2830-FR		N/A
C-C396	32	CAT-HT-396-3232-12	CAT-MA-396-3232-FR-03	MECAL-MN-396-3232-FR	N/A	N/A

CAT: CRIMP APPLICATION TOOLING
 -MA: MACHINE APPLICATOR
 -HT: HAND TOOL
 -XXX: CONTACT
 -XXXX: GAUGE RANGE
 -FR: PRE FEED 40MM STROKE
 -XX: INSULATION THICKNESS
 -01 (FOR 300V)
 -02 (FOR 600V)
 -03 (FOR TEFLON)

PROPRIETARY NOTE
 THIS DOCUMENT CONTAINS CONFIDENTIAL AND PROPRIETARY INFORMATION AND ALL DESIGN, MANUFACTURING, REPRODUCTION, USE, PATENT RIGHTS AND SALES RIGHTS ARE EXPRESSLY RESERVED BY SAMTEC, INC. THIS DOCUMENT SHALL NOT BE DISCLOSED, IN WHOLE OR PART, TO ANY UNAUTHORIZED PERSON OR ENTITY NOR REPRODUCED, TRANSFERRED OR INCORPORATED IN ANY OTHER PROJECT IN ANY MANNER WITHOUT THE EXPRESS WRITTEN CONSENT OF SAMTEC, INC.

DO NOT SCALE DRAWING
 SHEET SCALE: 1:0.571429



520 PARK EAST BLVD, NEW ALBANY, IN 47150
 PHONE: 812-944-6733 FAX: 812-948-5047
 e-Mail: info@SAMTEC.com code: 55322

DESCRIPTION: CRIMP/STRIP SPECIFICATIONS

DWG. NO. CRIMP-SPECIFICATIONS

BY: D.SCHMELZ 10-11-2010 SHEET 5 OF 5