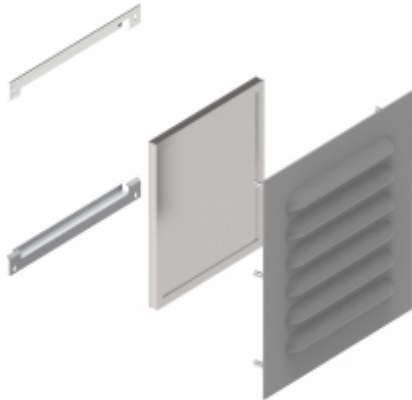


## Type 3R Louvered Vent Kits *1481L3R Series*



### Features

- Provides ventilation in enclosures for either Indoor or outdoor locations
- Gasketed sealing kit provides protection to nema 3R
- Aluminum filter mesh provides ingress protection for both solid debris and outdoor rain conditions
- Easily field install kit includes all hardware.
- Louver plates are offered in both 14 gauge steel with ANSI61 Gray power coat finish or 304 Stainless Steel
- Sold in QTY 1



Part Number		Overall Size H x W (inches)	Number of Louvers	Louver Length (inches)
ANSI 61 Gray	Stainless Steel			
<b>1481L3R55GY</b>	<b>1481L3R55SS</b>	5.56 x 5.30	3	3.00
<b>1481L3R56GY</b>	<b>1481L3R56SS</b>	5.30 x 6.30	3	4.00
<b>1481L3R66GY</b>	<b>1481L3R66SS</b>	6.40 x 6.30	4	4.00
<b>1481L3R68GY</b>	-	6.40 x 8.30	4	6.00
<b>1481L3R88GY</b>	-	8.69 x 8.30	6	6.00
<b>1481L3R610GY</b>	-	6.62 x 10.30	4	8.00
<b>1481L3R810GY</b>	-	9.0 x 10.30	6	8.00
<b>1481L3R1110GY</b>	-	11.37 x 10.30	8	8.00
<b>1481L3R1510GY</b>	-	16.12 x 10.30	9	8.00

### Replacement Aluminum Filters

Part Number	Size H x W (in)
<b>LFK55</b>	3.15 x 3.00
<b>LFK56</b>	3.25 x 4.00
<b>LFK66</b>	4.375 x 4.00
<b>LFK68</b>	4.375 x 6.00
<b>LFK88</b>	6.625 x 6.00
<b>LFK610</b>	4.563 x 8.00
<b>LFK810</b>	6.938 x 8.00
<b>LFK1110</b>	9.313 x 8.00
<b>LFK1510</b>	14.062 x 8.00

*Data subject to change without notice*

