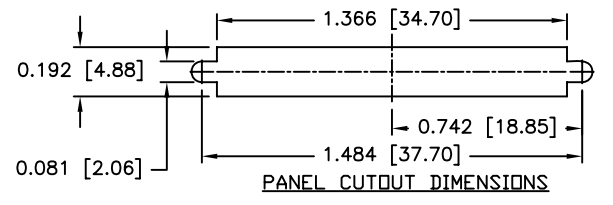
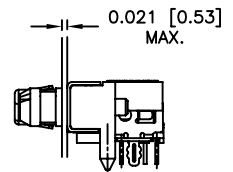
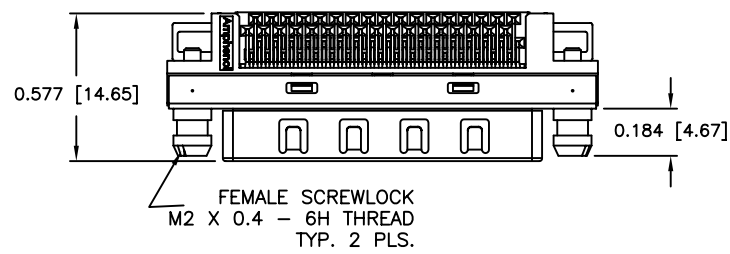
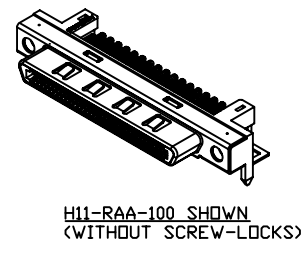
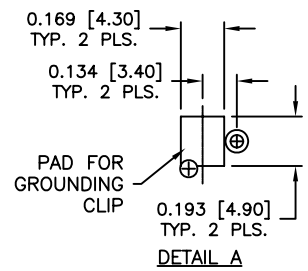
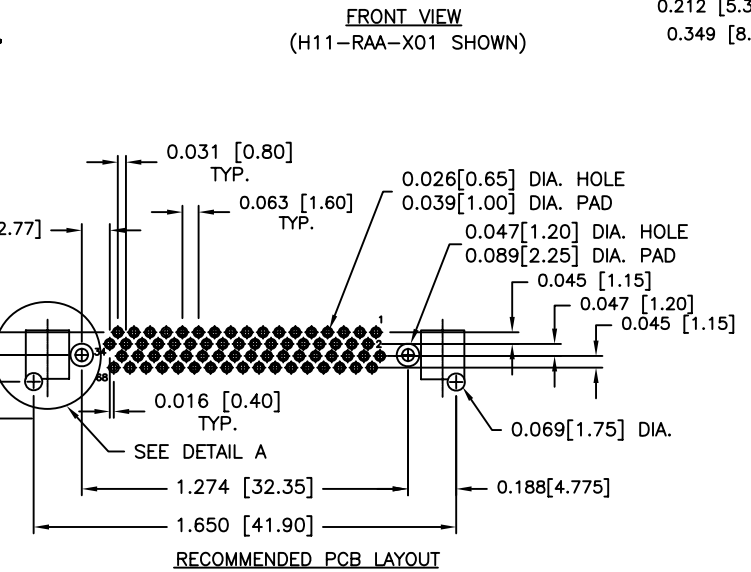
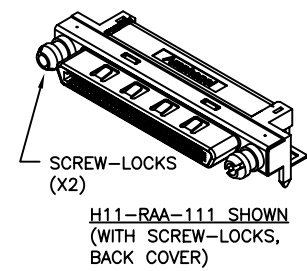
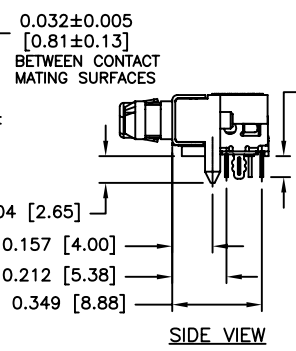
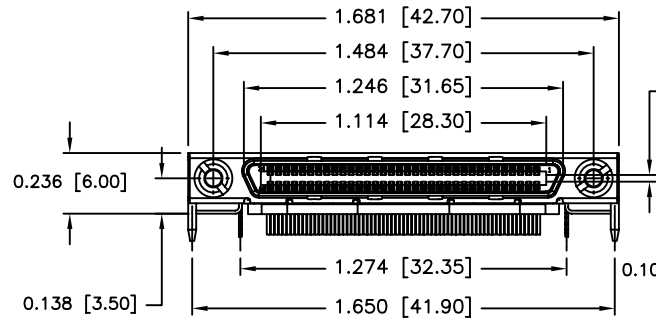
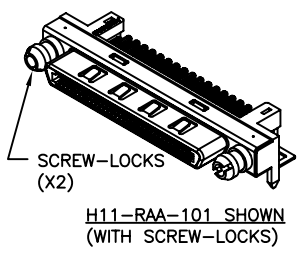


THIS DOCUMENT CONTAINS PROPRIETARY INFORMATION AND SUCH INFORMATION MAY NOT BE DISCLOSED TO OTHERS FOR ANY PURPOSE OR USED FOR MANUFACTURING PURPOSES WITHOUT PERMISSION FROM AMPHENOL CANADA CORP.

REVISIONS			DATE	APPROVED
REV.	EDN	DESCRIPTION		
A		PROPOSAL	AUG. 15/02	K.B.
C		PER ECN E0401B	MAY 28/04	K.L.
D		PROPOSAL	JAN 14/09	A.G.



- NOTES: (FOR REFERENCE)
- MATERIAL -
CONTACTS: PHOSPHOR BRONZE
30 microinches GOLD OVER 50 microinches NICKEL IN MATING AREA.
150 - 300 microinches TIN LEAD OVER NICKEL UNDERPLATE IN TERMINATION AREA.
INSULATION MATERIAL: GLASS FILLED THERMOPLASTIC UL 94V-0.
SHELL: STEEL, NICKEL OR BRIGHT TIN PLATE OVER COPPER UNDERPLATE.
GROUNDING CLIP: STEEL, TIN PLATE OVER NICKEL UNDERPLATE.
CENTER SHIELD: BRASS, NICKEL PLATE OVER COPPER UNDER PLATE.
 - RATINGS AND CHARACTERISTICS -
RATED VOLTAGE: 30 V rms.
CURRENT RATING AT 55°C (131°F)
1.5 A SINGLE CONTACT
0.5 A 50% ENERGIZED
0.3 A 100% ENERGIZED
INSULATION RESISTANCE: 500 m ohms min.
CONTACT RESISTANCE: 60 m ohms maximum
DURABILITY CYCLING: 2000 min.
CLIMATIC TEMPERATURE RANGE: -55°C (-67°F) TO +85°C (185°F)



AMPHENOL PART NUMBER CONFIGURATION

H11-RAA-1 X X - X

CONTACT PLATING OPTIONS
1: 30μ" GOLD OVER 50μ" NICKEL.

SPECIALLY MODIFIER
NONE: STANDARD, DIM T=.082
1: DIM T=.125
N: DIM T=.082
WITH NON-MAGNETIC SHELL AND SCREW

FEATURE OPTIONS
00: WITHOUT SCREW-LOCKS
01: WITH SCREW-LOCKS
11: WITH SCREW-LOCKS, BACK COVER.
(BACK COVER IS CURRENTLY NOT TOOLED YET)

UNLESS OTHERWISE SPECIFIED DIMENSIONS ARE IN INCHES	APPROVALS	DATE	Amphenol Canada Corp.	
	DRAWN S.C.	AUG 15, 02	TITLE	
	DESIGNED L K	JUNE 9, 98	VHDCI FIXED BOARD RIGHT ANGLE SINGLE VERSION	
	CHECKED			
MATERIAL AND FINISH	BY APPD		SIZE	REV. D
REF.	E APPD		DWG. NO.	P-H11-RAA-1XX-X
CORE IDENT. NO.	DWG APPD		SCALE	2 = 1
03554			PROJECT	SHEET 1 OF 1