

THIS DRAWING IS UNPUBLISHED.

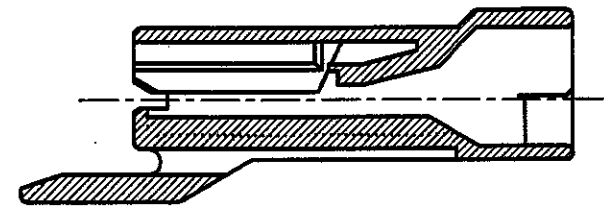
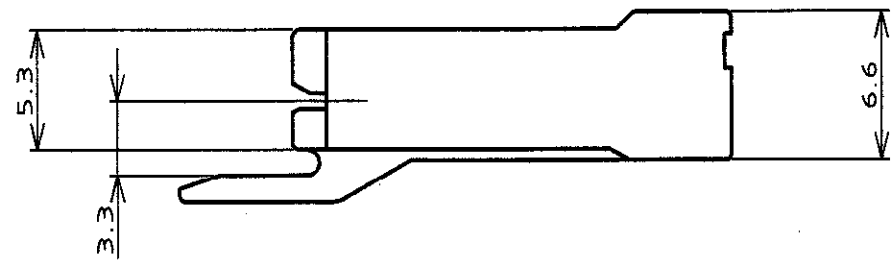
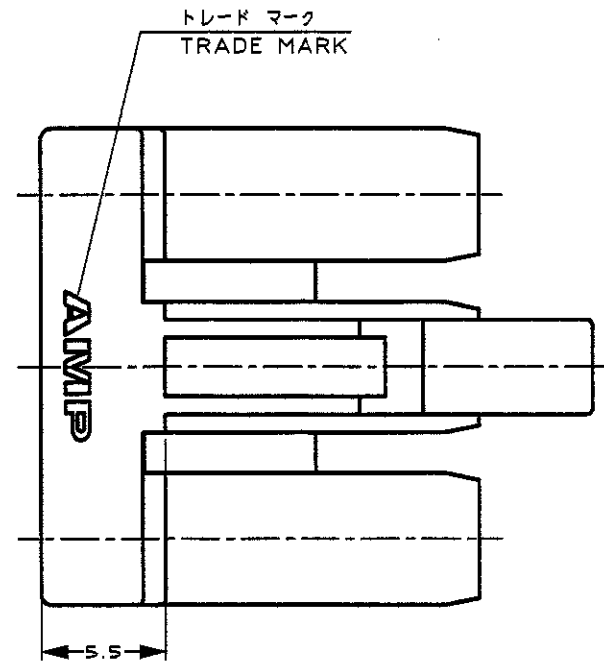
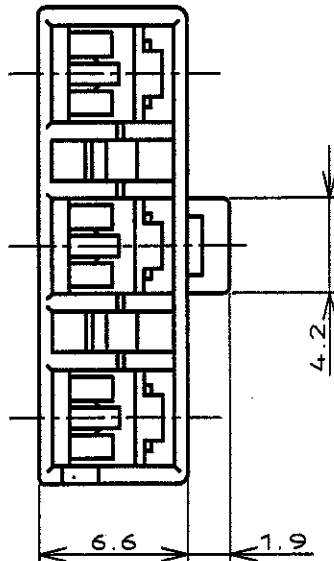
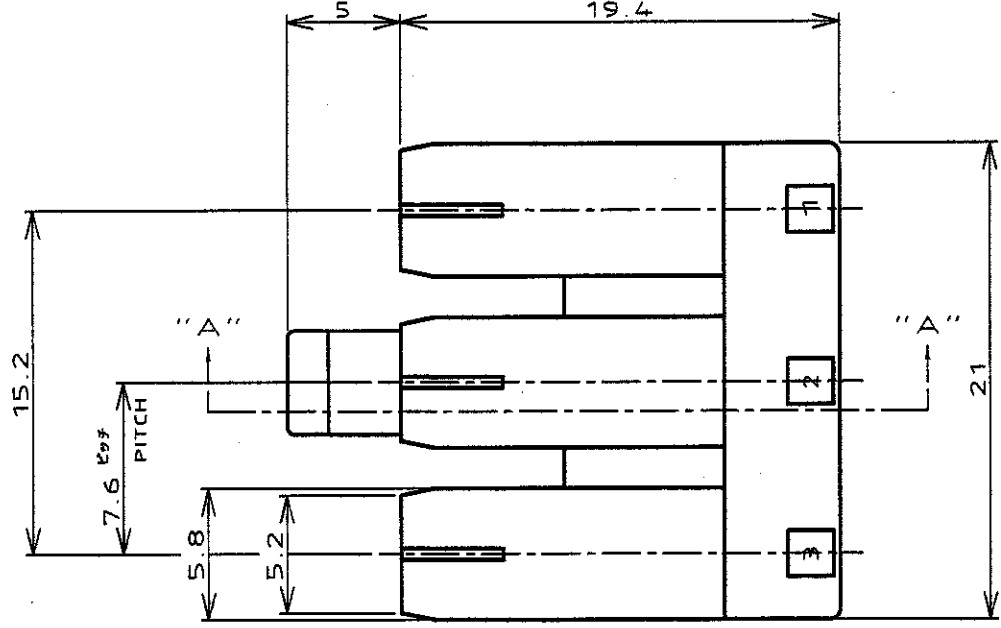
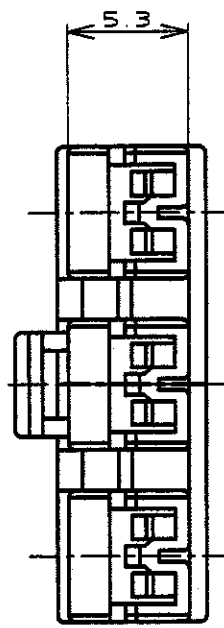
RELEASED FOR PUBLICATION

.19

© COPYRIGHT 19

BY AMP INCORPORATED. ALL RIGHTS RESERVED.

LOC		DIST		REVISIONS					
P	LTR	DESCRIPTION	ECN	DATE	DWN	APVD			
	A	REVISED	FJ00-0612-01	11 JUN '01	T.Y	M.S			
	A1	REVISED PER	ECO-09-026346	26 NOV 09	KK	AEG			



断面 "A" - "A" SECT.

1 OBSOLETE PARTS: OBSOLETE CIS STREAMLINING PER D.RENAUD/D.SINISI

1 OBSOLETE	赤 (RED)	353255-7
	青 (BLUE)	353255-6
	自然色 (NATURAL)	353255-1
	色目 (COLOR)	型番 (P/N)

THIS DRAWING IS A CONTROLLED DOCUMENT FOR AMP INCORPORATED. IT IS SUBJECT TO CHANGE AND THE CONTROLLING ENGINEERING ORGANIZATION SHOULD BE CONTACTED FOR THE LATEST REVISION.		CHK M.SUZUKI 23.AUG.'96	Tyco Electronics AMP K.K. Kawasaki, Japan	
DIMENSIONS: 単位 単位 mm	TOLERANCES UNLESS OTHERWISE SPECIFIED 一般公差 10mm ±0.2 20mm ±0.25 30mm ±0.3 100mm ±0.3 ANGLE ±0.3°	APVD Y.KASHIWA 23.AUG.'96	NAME 110 シリーズ ポジティブ ロック EX-III ダブル ロック タイプ 3極 ハウジング 110 SERIES POSITIVE LOCK EX-III DOUBLE LOCK TYPE 3Pos. HOUSING	
MATERIAL 材料 6/6ナイロン (UL94V-0) 6/6 NYLON	FINISH 仕上 //	PRODUCT SPEC 製品規格 108-5530	SIZE A3	DRAWING NO. C=353255
CUSTOMER DRAWING		APPLICATION SPEC 取付適用規格 114-5229	WEIGHT //	SCALE 尺数 //
		WIRE RANGE 適合電線径範囲 //		INSULATION DIA 絶縁外径 //
		SHEET 1 OF 1		REV A1