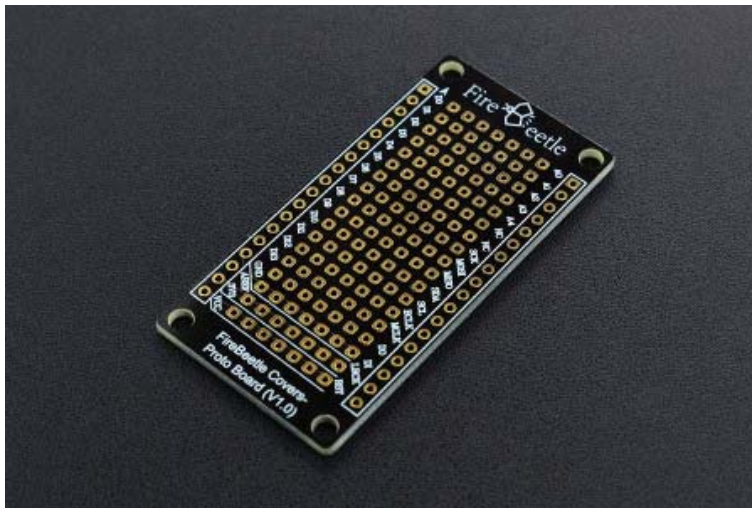




# FireBeetle Covers-Proto Board

## SKU:DFR0481



### INTRODUCTION

DFRobot FireBeetle series is the low-power consumption micro-controller intentionally designed for Internet of Things (IoT). The series micro-controllers aims at IoT node of low-power consumption, attending to build the IoT hardware platform quickly and conveniently. There are three types of FireBeetle, containing Boards (main control), Covers (expansion boards) and related Accessories.

Proto Board is compatible with products of FireBeetle series. There are 14×7 general 2.54mm solder holes in the board of standard spacing. The prototyping boards connect to one master board with VCC, 3.3V and GND soldering pads. These features of Proto Board contribute to it an ideal vehicle for soldering any electronic component. Moreover, the ports compatible with other projects of FireBeetle makes it the best choice for overlay circuit prototypes.

## FEATURES

- Compatible with products in the DFRobot FireBeetle Series, plug and play
- Cost-Effective
- Small size, convenient to install

## SPECIFICATION

- 14×7 general 2.54mm soldering pad
- Dimension: 29.00×58.00mm/ 1.41×2.28 inches
- Weight: 18 g

## SHIPPING LIST

FireBeetle Covers-Proto Board x1  
18 pin-2.54mm pin x4  
18 pin-2.54mm long pin header x4

