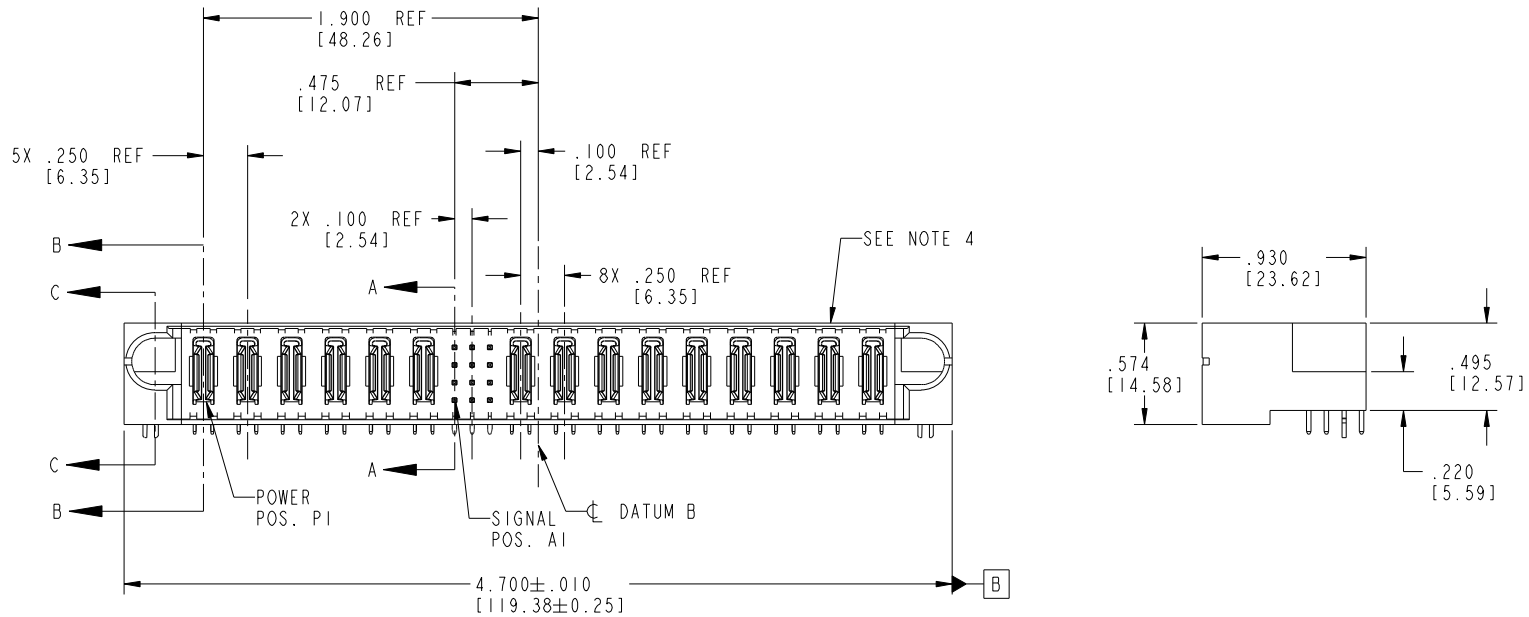


Tous droits strictement réservés. Reproduction ou communication à des tiers interdite sous quelque forme que ce soit sans autorisation écrite du propriétaire. Propriété de c FCI. Droits de reproduction FCI.

All rights strictly reserved. Reproduction or issue to third parties in any form whatever is not permitted without written authority from the proprietor. Property of FCI. Copyright FCI.

PRODUCT NO.	ROWS	POWER					SGN			POWER					E2						
		E1	P1	P2	P3	P4	P5	P6	1	2	3	P7	P8	P9		P10	P11	P12	P13	P14	P15
51730-107 NOTE: ③	D C B A	HA	PA	PA	PA	PA	PA	PA	1 2 3 S R L	2	3	PA	PA	PA	PA	PA	PA	PA	PA	PA	HA



CODE	DIM "M" MATING LENGTH	CONTACT TYPE
U	.270 [6.86]	SIGNAL
T	.270 [6.86]	SIGNAL
S	.270 [6.86]	SIGNAL
R	.270 [6.86]	SIGNAL
PA	N/A [N/A]	POWER
HA	N/A [N/A]	HOLD-DOWN
E	.220 [5.59]	SIGNAL

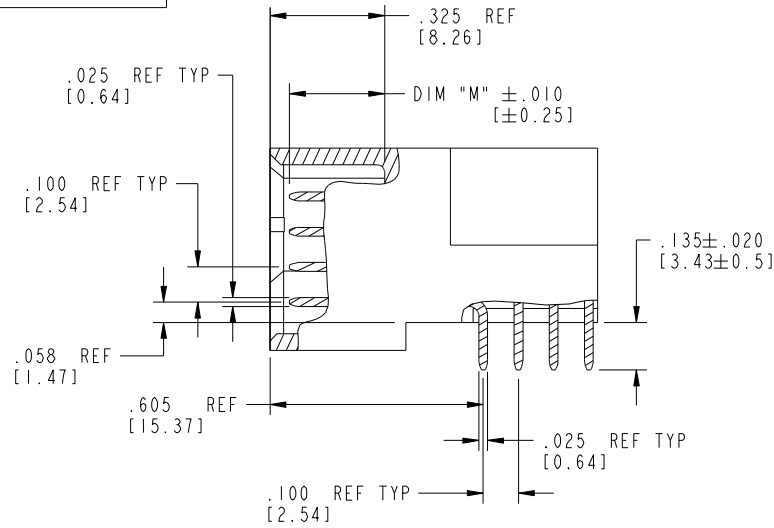
mat'l code				SEE NOTE 2		tolerances unless otherwise specified		CUSTOMER		FCJ	
ltr	ecn no.	dr	date	linear	.XX±.01/0.X±0.3	projection	COPY	www.fciconnect.com			
A	DG04-0086	LH	11/24/04	linear	.XXX±.005/0.XX±0.13	INCH/MM	title	6P + 12S + 9P			
B	DG05-0227	SJ	07/15/05	angles	.XXX±.002/0.XX±0.051	scale	RIGHT ANGLE SOLDER HEADER		product family PwrBlade code 213		
C	DG05-0463	CS	11/14/05	dr	0°±2°	1:1	size	dwg no		sheet	
D	DG08-0253	SH	09/13/08	enrg			A		51730-107		1 of 4
				chr	VICTOR LIN	11/24/04					
				appd	JOSEPH HSIA	11/24/04					
sheet index	revision sheet	D	D	D	D						
		1	2	3	4						

cage code 22526

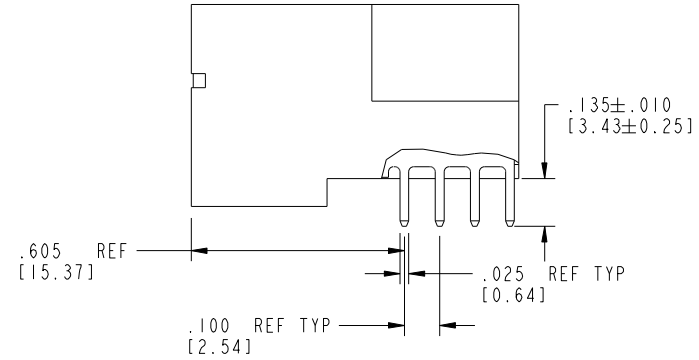
Tous droits strictement réservés. Reproduction ou communication à des tiers interdite sous quelque forme que ce soit sans autorisation écrite du propriétaire. Propriété de c FCI. Droits de reproduction FCI.

All rights strictly reserved. Reproduction or issue to third parties in any form whatever is not permitted without written authority from the proprietor. Property of FCI. Copyright FCI.

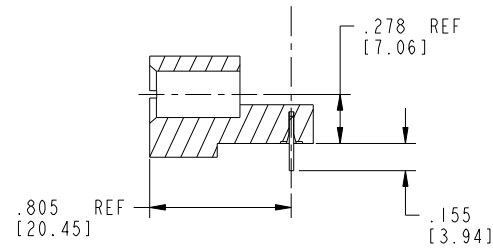
PRODUCT NUMBER
51730-107--
NOTE: ③



BROKEN-OUT SECTION A-A
SCALE 2:1



BROKEN-OUT SECTION B-B
SCALE 2:1



SECTION C-C

mat'l code				SEE NOTE 2		tolerances unless otherwise specified		CUSTOMER		FCI	
ltr	ecn no.	dr	date	linear	.XX±.01/0.X±0.3	projection	COPY	www.fciconnect.com			
D				linear	.XXX±.005/0.XX±0.13	INCH/MM	title	6P + 12S + 9P			
				angles	.XXX±.0020/0.XXX±0.051	scale	RIGHT ANGLE SOLDER HEADER				
				dr	0°±2°	1:1	product family	PwrBlade	code	213	
				enr	LH 11/24/04		size	dwg no	2 of 4		
				chr	VICTOR LIN 11/24/04		51730-107				
				appd	JOSEPH HSIA 11/24/04						
sheet index	revision sheet										

cage code 22526

Pro/E

Tous droits strictement réservés. Reproduction ou communication à des tiers interdite sous quelque forme que ce soit sans autorisation écrite du propriétaire. Propriété de c FCI. Droits de reproduction FCI.



All rights strictly reserved. Reproduction or issue to third parties in any form whatever is not permitted without written authority from the proprietor. Property of FCI. Copyright FCI.

PRODUCT NUMBER
51730-107--
NOTE: ③

NOTES:

1. DIMENSIONS AND TOLERANCES ARE IN ACCORDANCE WITH ASME Y14.5M, 1994 UNLESS OTHERWISE SPECIFIED.

CONNECTOR NOTES:

2. HOUSING MATERIAL: UL 94 V-0 GLASS FILLED HIGH-TEMP THERMOPLASTIC
POWER CONTACT MATERIAL: COPPER ALLOY
SIGNAL PIN MATERIAL: COPPER ALLOY

③ PLATING:
△ SEE ITEM 1 & 2 IN PRINT 10064183 FOR PLATING SPEC OF 51730-107 AND 51730-107LF RESPECTIVELY

4. MANUFACTURER'S NAME, P/N, AND DATE CODE TO APPEAR ON THIS SURFACE.
5. PRODUCT SPECIFICATION GS-12-149.
APPLICATION SPECIFICATION BUS-20-067.

6. PACKAGED IN TRAYS.

PCB NOTES:

7. ALL HOLE DIAMETERS ARE FINISHED HOLE SIZE.
8. MOUNTING HOLES, WHERE APPLICABLE, ARE UNPLATED.
9. $\varnothing .0453 \pm .0010$ [1.151 ± 0.025] DRILLED HOLES PLATED WITH .0003 [0.008] MIN SnPb OVER .001 [0.03] TO .003 [0.08] Cu PLATING TO ACHIEVE $\varnothing .040 \pm .003$ [1.02 ± .07] HOLE.
10. "DIM XXX" TO BE DETERMINED BY THE CUSTOMER.
11. CONNECTOR KEEP-OUT ZONE.
12. A △ SYMBOL WILL BE NEXT TO ANY DIMENSION, VIEW, OR NOTE WHICH HAS BEEN MODIFIED WITH CURRENT DRAWING VERSION.

mat'l code				SEE NOTE 2		tolerances unless otherwise specified		CUSTOMER		FCI		www.fciconnect.com	
ltr	ecn no.	dr	date	linear	.XX±.01/0.X±0.3		COPY		projection	title			
D					.XXX±.005/0.XX±0.13		INCH/MM			6P + 12S + 9P			
					.XXX±.002/0.XXX±0.051		1:1			RIGHT ANGLE SOLDER HEADER			
				angles	0° ± 2°		scale		product family		code		
				dr	LH	11/24/04	A		PwrBlade		213		
				enrg	LH	11/24/04	A		size		sheet		
				chr	VICTOR LIN	11/24/04	A		dwg no		4 of 4		
				appd	JOSEPH HSIA	11/24/04	A		51730-107				
sheet index		revision sheet											

cage code 22526

Pro/E