

Power Dividers 2-Way



Applications

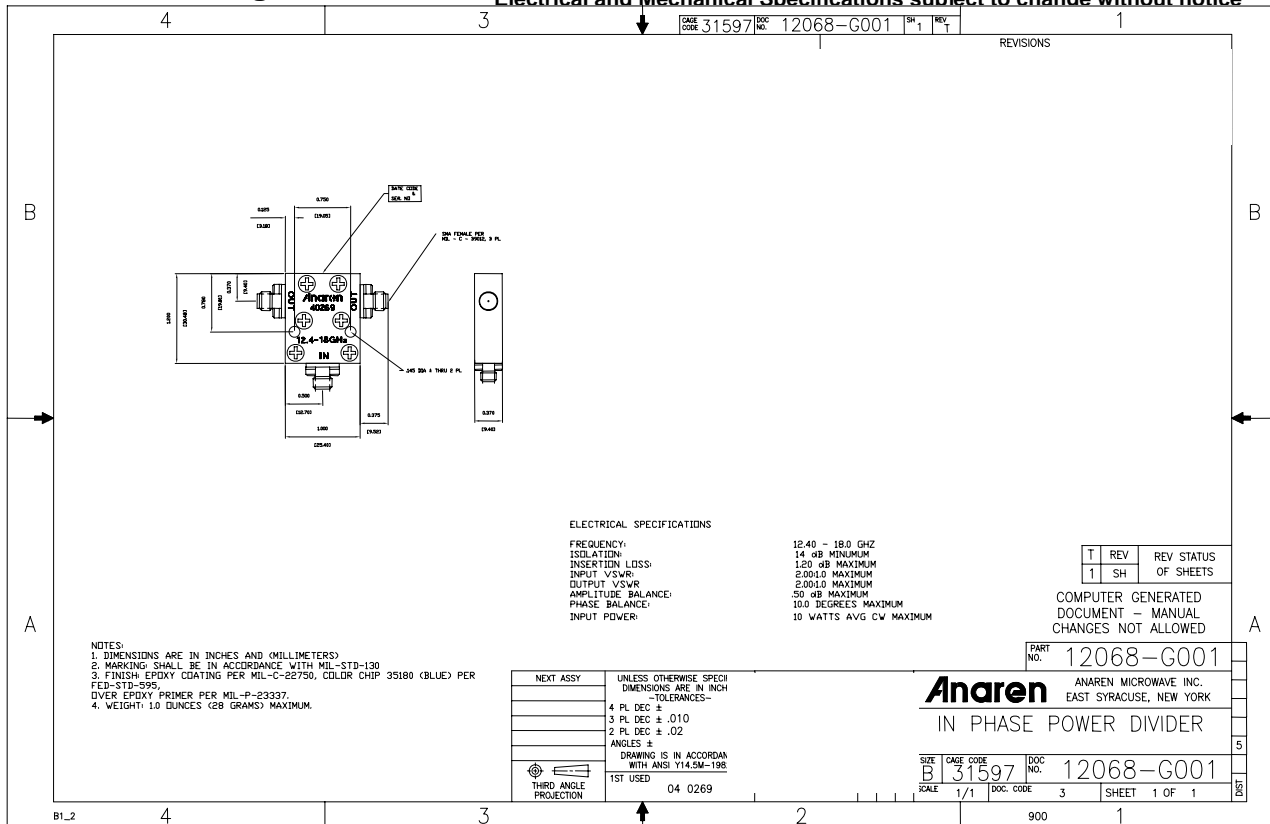
- Phased Arrays
- Antenna Feed Networks
- Image Reject Mixers
- Test Systems
- LO Power Dividers

Features

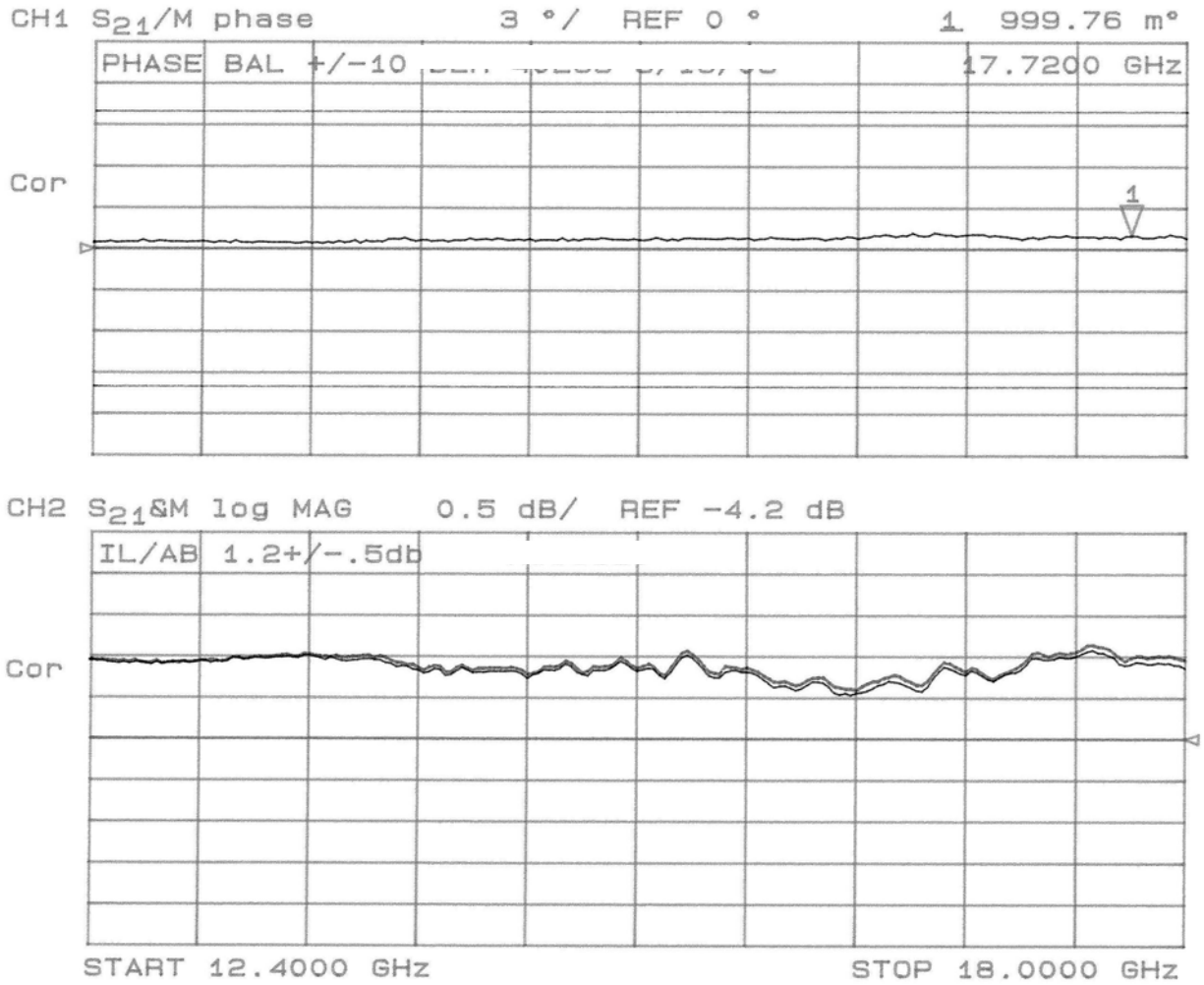
- Military Grade
- 12.4 – 18.0 GHz
- 2-Way Power Split
- In-Phase
- Connectors Per MIL-C-39012
- Rugged Aluminum Housing
- Low VSWR
- Meets MIL-E-5400 Class 3 Requirements

Outline Drawing

NOTES: Input power wit load VSWR of 1.20:1
Electrical and Mechanical Specifications subject to change without notice



Typical Test Data Plots



Typical Test Data Plots

