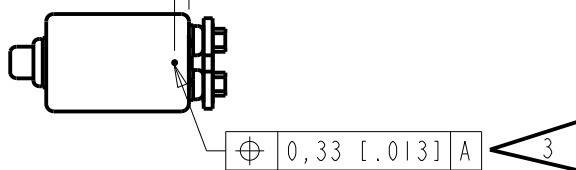
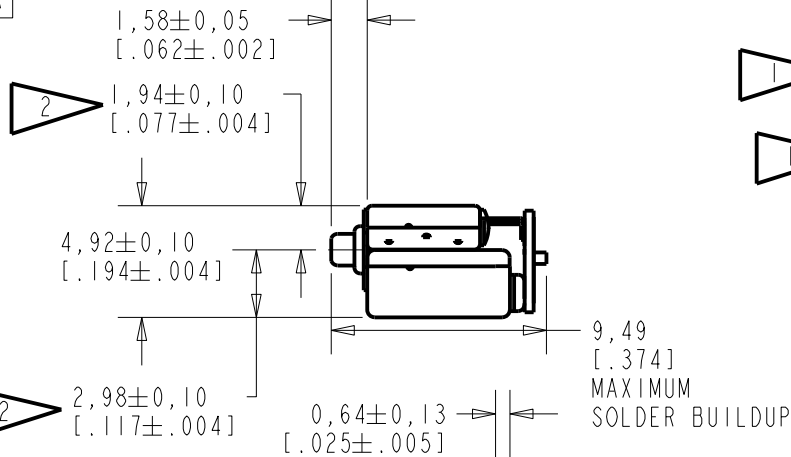
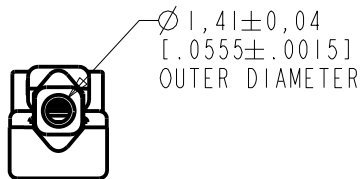
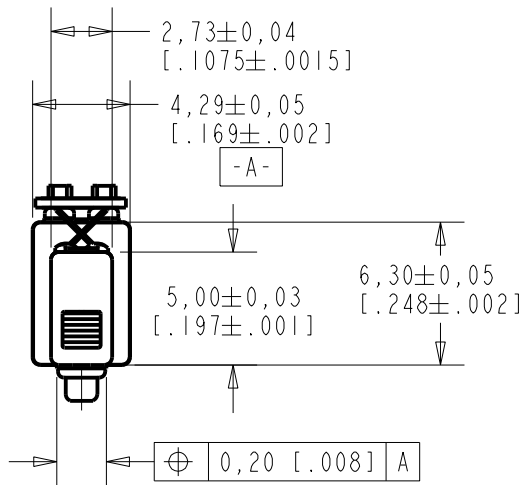
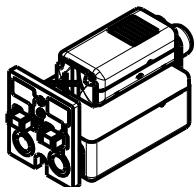
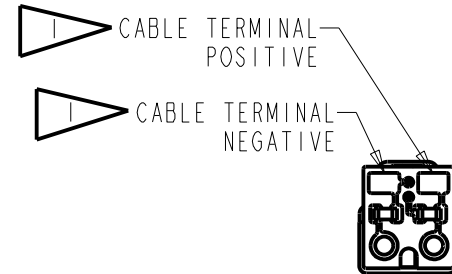


CO-30710-000
SHT 1.1



NOTES:

- 1 A POSITIVE GOING VOLTAGE AT THE POSITIVE TERMINAL RELATIVE TO THE NEGATIVE TERMINAL CAUSES A DECREASE IN PRESSURE AT THE SOUND OUTLETS.
- 2 LOCATED FROM TWO SURFACES FOR CUSTOMER CONVENIENCE. ONLY APPLICABLE FROM ONE SURFACE, NOT TO BE USED TOGETHER.
- 3 IT IS IMPORTANT TO KEEP HOLE CLEAN AND CLEAR AT ALL TIMES. CLOGGING THE HOLE WILL CAUSE PERFORMANCE CHANGES.



NOMINAL WEIGHT
.43 GRAM

DIMENSIONS IN MILLIMETERS [INCHES]

Revision	C.O. #	Implementation Date	RELEASE LEVEL	REVISION
			Active	A
A	C10111210	6-11-10		

SCALE:	3:1	DR. BY	DATE
DO NOT SCALE DRAWING		LSY	6-11-10
TITLE:	RECEIVER	CK. BY	DATE
	OUTLINE DRAWING	GJP	6-17-10
	CO-30710-000	APP. BY	DATE
	SHT 1.1	GJP	6-17-10

KNOWLES ELECTRONICS
ITASCA, ILLINOIS U.S.A.

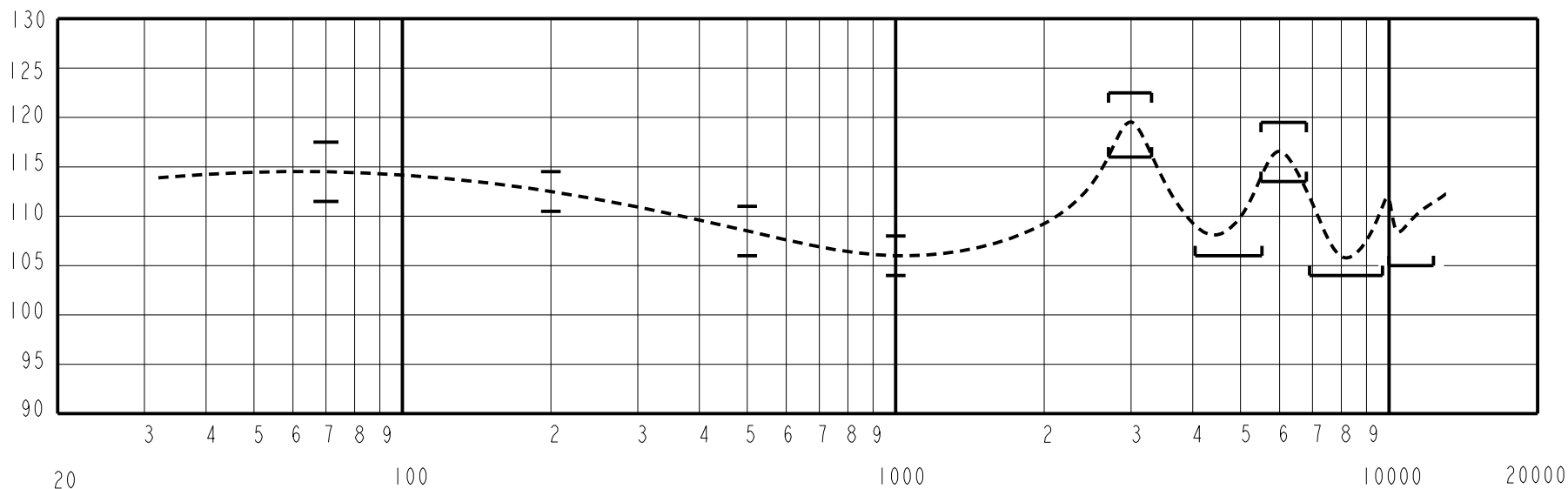
UNDAMPED MAGNETIC BALANCED ARMATURE RECEIVERS INTENDED FOR USE AS THE HIGH AND LOW FREQUENCY DRIVERS IN A Hi Fi SYSTEM. THE GO RECEIVER COMBINES A WBFK AND ED RECEIVERS COUPLED THROUGH A CIRCUIT TO PROVIDE THE RESPONSE SHAPE.

NO DAMPING

GO-30710-000
SHEET 2.1

CONSTANT VOLTAGE DRIVE CONDITIONS
TESTED WITH VENT UNSEALED

SENSITIVITY IN dB RELATIVE TO 1.0 VOLT / 0.1 Pa (N/M²)
FOR CONDITIONS SHOWN BELOW



ACOUSTICAL

SENSITIVITY
DEVICE WILL PRODUCE THE SPL LISTED BELOW UNDER TEST CONDITION IN TABLE 2.
NOMINAL SENSITIVITY AT 1kHz IS dB RELATIVE TO 20 μ Pa. ALL OTHER VALUES
IN dB RELATIVE TO THE SENSITIVITY AT 1kHz.

FREQUENCY (Hz)	MINIMUM	NOMINAL	MAXIMUM
70	+5.5	+8.5	+11.5
200	+4.5	+6.5	+8.5
500	0.0	+2.5	+5.0
1000	-2.0	106.0	+2.0
2700 - 3300	+10.5	+13.5	+16.5
4050 - 5450	0.0	---	---
5400 - 6800	+7.5	+10.5	+13.5
6900 - 9600	-7.0	---	---
10000 - 13000	-6.0	---	---

TABLE 1

TEST CONDITIONS

NOMINAL SOURCE VOLTAGE	0.146 V rms, 0 V DC BIAS
SOURCE IMPEDANCE	<1 Ohm
TUBING	7 X 2 mm + 0.188cc CAVITY
COUPLER CAVITY	IEC 60318-4("711")
TEST STATION	FCART

TABLE 2

ELECTRICAL

DC RESISTANCE	25.4 Ohms \pm 10%
IMPEDANCE @ 500 Hz	51.7 Ohms \pm 15%
IMPEDANCE @ 1kHz	90.0 Ohms \pm 15%

TABLE 3

MAXIMUM TOTAL HARMONIC DISTORTION
6% AT 1000 Hz AT 100 dB SPL

MECHANICAL

PORT LOCATION: 12S
SOLDER TYPE: SAC305(LEAD FREE)

TEMPERATURE:
OPERATING: SENSITIVITY AT 1K Hz WILL NOT VARY
MORE THAN +1/-3 dB FROM 17°C TO 63°C.
STORAGE: -40°C TO 63°C.

ISOLATION: CASE WILL BE ELECTRICALLY ISOLATED FROM THE COIL CIRCUIT.

Revision	C.O. #	Implementation Date	RELEASE LEVEL	REVISION
			Active	A
A	CI0111210	6-11-10		
WHEN TEST LIMITS ARE USED TO ESTABLISH INCOMING INSPECTION ACCEPTANCE/REJECTION CRITERIA, CORRELATION OF TEST EQUIPMENT WITH KNOWLES IS ALSO REQUIRED FOR ELIMINATION OF EQUIPMENT AND TEST METHOD VARIATION			DR. BY	DATE
TITLE: RECEIVER PERFORMANCE SPECIFICATION			LSY	6-11-10
			GO-30710-000	
			CK. BY	DATE
			GJP	6-17-10
			APP. BY	DATE
			GJP	6-17-10
			SHT 2.1	

KNOWLES ELECTRONICS
ITASCA, ILLINOIS U.S.A.