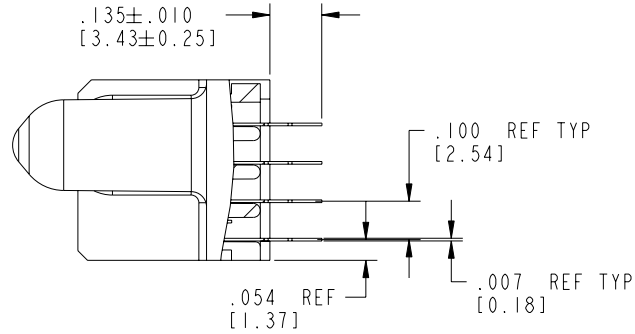


Tous droits strictement réservés. Reproduction ou communication a des tiers interdite sous quelque forme que ce soit sans autorisation écrite du propriétaire. Propriété de c FCI. Droits de reproduction FCI.

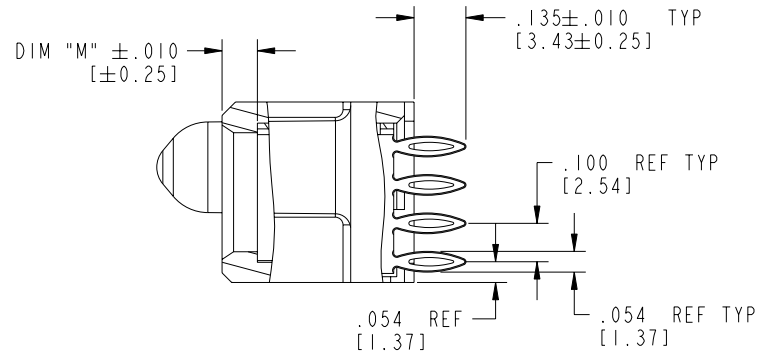


All rights strictly reserved. Reproduction or issue to third parties in any form whatever is not permitted without written authority from the proprietor. Property of FCI. Copyright FCI.

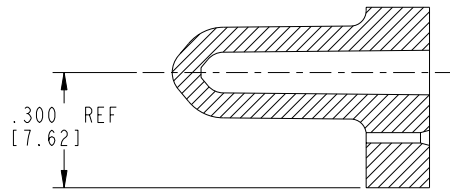
PRODUCT NUMBER
51751-014__
NOTE: 3



SECTION A-A
SCALE 2:1



SECTION B-B
SCALE 2:1



SECTION C-C
SCALE 2:1

mat'l code				SEE NOTE 2		tolerances unless otherwise specified		CUSTOMER		FCI		www.fciconnect.com			
ltr	ecn no.	dr	date	linear	.XX±.01/0.X±0.3		COPY		projection	title			32S +11P VERTICAL PRESS-FIT RECEPT		
D					.XXX±.005/0.XX±0.13		INCH/MM			product family		code			
					angles	.XXXX±.0020/0.XXX±0.051		1:1		PwrBlade		213			
						0°±2°		scale		size		sheet			
				dr	T. BRUNGARD	08/02/04			A		51751-014		2 of 4		
				engr	M. GRAY	08/02/04									
				chr	M. GRAY	08/02/04									
				appd	M. GRAY	08/02/04									
sheet index		revision sheet													

cage code 22526

Pro/E

PDM: Rev:D

STATUS: Released

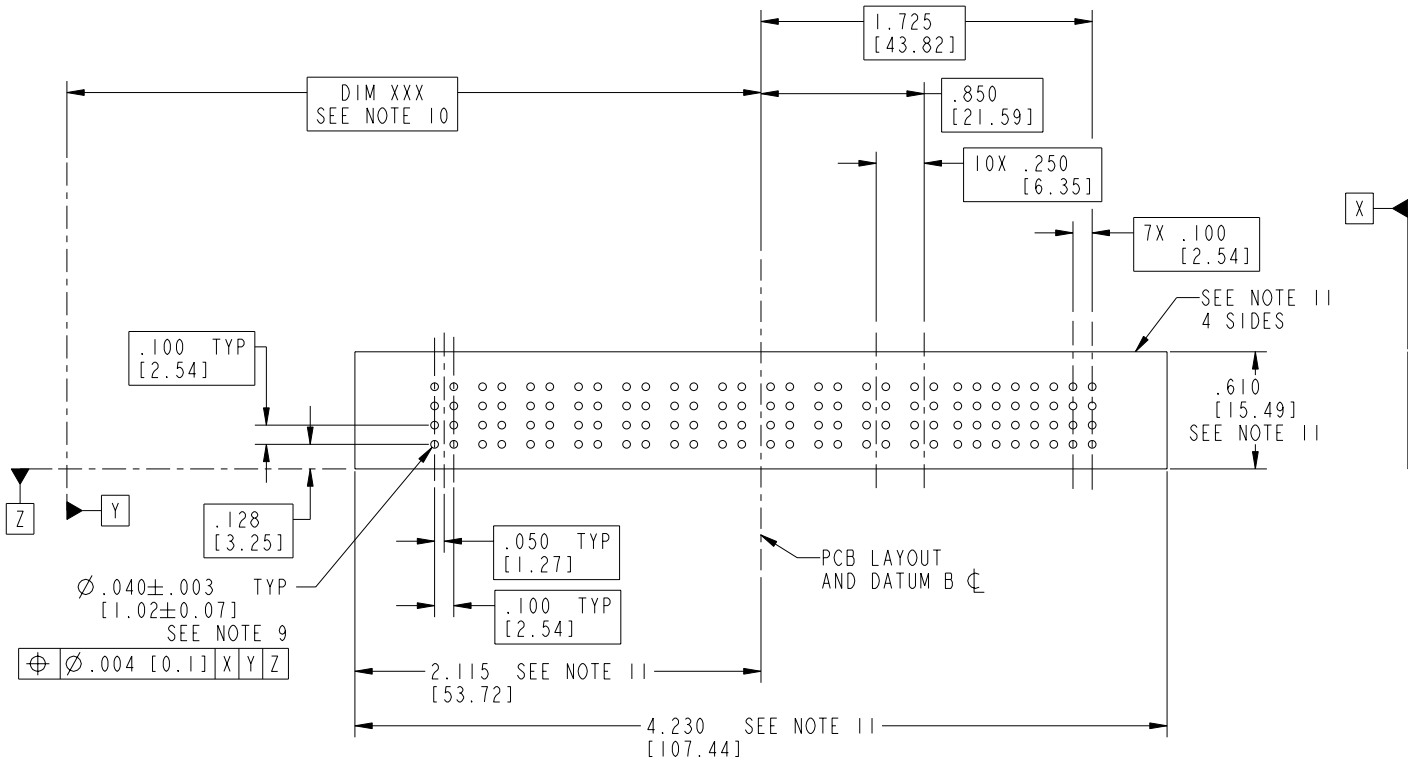
Printed: Dec 20, 2010

Tous droits strictement reserves. Reproduction ou communication a des tiers interdite sous quelque forme que ce soit sans autorisation écrite du propriétaire. Propriete de c FCI. Droits de reproduction FCI.



All rights strictly reserved. Reproduction or issue to third parties in any form whatever is not permitted without written authority from the proprietor. Property of FCI. Copyright FCI.

PRODUCT NUMBER
51751-014__
NOTE: 3



mat'l code		SEE NOTE 2		tolerances unless otherwise specified		CUSTOMER		FCI		www.fciconnect.com	
ltr	ecn no.	dr	date	linear	.XX±.01/0.X±0.3	COPY		title		32S + IIP	
D				angles	.XXX±.005/0.XX±0.13	projection		VERTICAL PRESS-FIT RECEIPT			
					.XXX±.0020/0.XX±0.051	INCH/MM		product family		PwrBlade	
				dr	T. BRUNGARD 08/02/04	scale		size		213	
				enr	M. GRAY 08/02/04	1:1		dwg no		51751-014	
				chr	M. GRAY 08/02/04			sheet		3 of 4	
				appd	M. GRAY 08/02/04			A			
sheet index	revision sheet										

cage code 22526

Pro/E

PDM: Rev:D

STATUS: Released

Printed: Dec 20, 2010

Tous droits strictement reserves. Reproduction ou communication a des tiers interdite sous quelque forme que ce soit sans autorisation écrite du propriétaire. Propriete de c FCI. Droits de reproduction FCI.



All rights strictly reserved. Reproduction or issue to third parties in any form whatever is not permitted without written authority from the proprietor. Property of FCI. Copyright FCI.

PRODUCT NUMBER
51751-014__
NOTE: 3

NOTES:

1. DIMENSIONS AND TOLERANCES ARE IN ACCORDANCE WITH ASME Y14.5M, 1994 UNLESS OTHERWISE SPECIFIED.

CONNECTOR NOTES:

- 2 HOUSING MATERIAL: UL 94 V-0 GLASS FILLED
HIGH-TEMP THERMOPLASTIC
POWER CONTACT MATERIAL: COPPER ALLOY
SIGNAL PIN MATERIAL: COPPER ALLOY
- 3. 51751-014;51751-014LF;51751-014GLF PLATING SPEC. SEE PRINT:10064183
- 4 MANUFACTURER'S NAME, P/N, AND DATE CODE TO APPEAR ON THIS SURFACE.
- 5. PRODUCT SPECIFICATION GS-12-149.
APPLICATION SPECIFICATION BUS-20-067.
- 6. PACKAGED IN TRAYS.

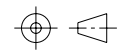
PCB NOTES:

- 7. ALL HOLE DIAMETERS ARE FINISHED HOLE SIZE.
- 8 MOUNTING HOLES, WHERE APPLICABLE, ARE UNPLATED.
- 9 $\varnothing .0453 \pm .0010$ [1.151 \pm 0.025] DRILLED HOLES PLATED WITH .0003 [0.008] MIN SnPb OR Sn OVER .001 [0.03] TO .003 [0.08] Cu PLATING TO ACHIEVE $\varnothing .040 \pm .003$ [1.02 \pm .07] HOLE.
- 10 "DIM XXX" TO BE DETERMINED BY THE CUSTOMER.
- 11 CONNECTOR KEEP-OUT ZONE.

mat'l code				SEE NOTE 2		tolerances unless otherwise specified		CUSTOMER		FCI		www.fciconnect.com	
ltr	ecn no.	dr	date	linear	.XX±.01/0.X±0.3		COPY		projection	title			32S +11P
D					.XXX±.005/0.XXX±0.13		INCH/MM			VERTICAL PRESS-FIT RECEPT			
					.XXXX±.0020/0.XXX±0.051		scale			product family		PwrBlade	code
				angles	0° ± 2°		1:1		size		dwg no	sheet	4 of 4
				dr	T. BRUNGARD	08/02/04			A		51751-014		
				enr	M. GRAY	08/02/04							
				chr	M. GRAY	08/02/04							
				appd	M. GRAY	08/02/04							
sheet index	revision sheet												



www.fciconnect.com



INCH/MM

scale 1:1

title 32S +11P
VERTICAL PRESS-FIT RECEPT

product family PwrBlade code 213

size A 51751-014 sheet 4 of 4

cage code 22526

Pro/E

PDM: Rev:D

STATUS: Released

Printed: Dec 20, 2010