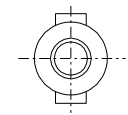
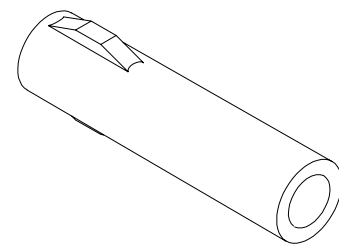
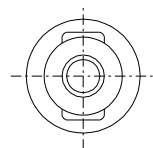
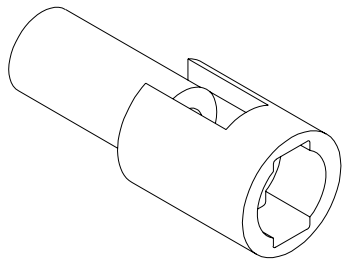
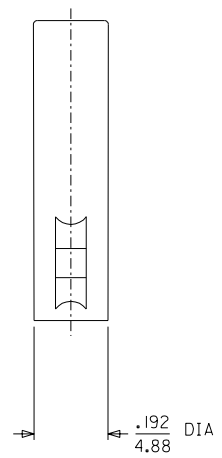
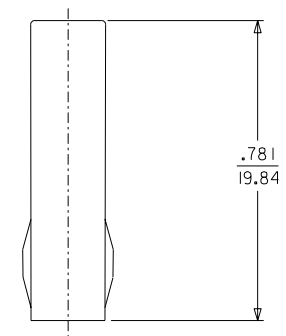
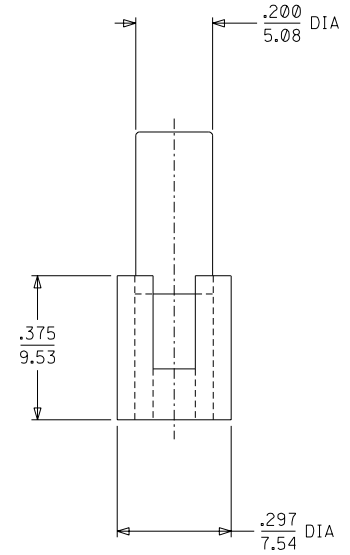
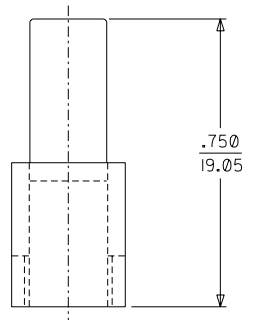
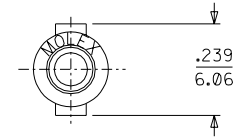
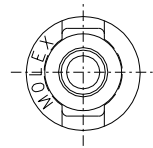


PLUG

RECEPTACLE



PLUG HOUSING

RECEPTACLE HOUSING

REDRAWN ON CAD
 EC NO. LUCP2003-2578
 DRWN: BSYNNOTT 6/10/03
 CHK: BWIRKLUS 6/13/03
 APPR: BWIRKLUS 6/16/03

QUALITY SYMBOLS
 MAJOR =
 CRITICAL =
 DESCRIPTION
 REV

GENERAL TOLERANCES: (UNLESS SPECIFIED)

	mm	INCH
4 PLACES	±0.---	±.
3 PLACES	±0.	±.010
2 PLACES	±0.25	±.014
1 PLACE	±0.35	±.

 ANGULAR: ± 1°
 DRAFT WHERE APPLICABLE MUST REMAIN WITHIN DIMENSIONS

SCALE 4 : 1
 DESIGN UNITS mm INCH
 DRAWN BY & DATE
 JBS 6/10/03
 CHECKED BY & DATE
 BW 6/13/03
 APPROVED BY & DATE
 BW 6/16/03
 CAD FILENAME
 SD1625IX1.DGN

DIMENSIONS: mm INCH mm ONLY
 THIRD ANGLE PROJECTION
 TITLE: PLUG & RECEPTACLE HOUSINGS I CIRCUIT, .062/(1.57) DIA. SERIES
 Molex MOLEX INCORPORATED
 MATERIAL NO. SEE CHART
 DRAWING NO. SD-1625-1*-*
 SHEET NO. 1 OF 2
 THIS DRAWING CONTAINS INFORMATION THAT IS PROPRIETARY TO MOLEX INCORPORATED AND SHOULD NOT BE USED WITHOUT WRITTEN PERMISSION.
 SIZE C

2	H
1	H
	REV
	REV
	REV

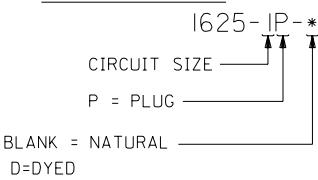
PLUG

RECEPTACLE

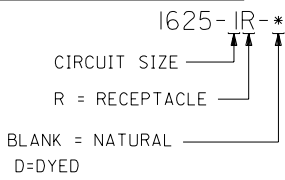
PART NO.	ENG. NO.
03-06-2011	1625-IP
03-06-7011	1625-IP-D

PART NO.	ENG. NO.
03-06-1011	1625-IR
03-06-6011	1625-IR-D

PLUG LEGEND:



RECEPTACLE LEGEND:



NOTES:

1. MATERIAL: NYLON, PA66, U.L. 94V-2.
2. FINISH: NONE.
3. PRODUCT SPECIFICATION: PS-02-06.
4. PACKAGING SPECIFICATION: NONE.
5. FOR USE WITH .062 SERIES TERMINALS.

DIMENSIONS SHOWN (METRIC) INCH UNLESS OTHERWISE SPECIFIED TOLERANCES: ANGULAR \pm .5°			REVISIONS ONLY ON CAD SYSTEM										
<table border="1"> <tr> <th>INCH</th> <th>METRIC</th> </tr> <tr> <td>3 PLACE \pm .010</td> <td>---</td> </tr> <tr> <td>2 PLACE \pm .014</td> <td>\pm 0.25</td> </tr> <tr> <td>1 PLACE ---</td> <td>\pm 0.35</td> </tr> </table>			INCH	METRIC	3 PLACE \pm .010	---	2 PLACE \pm .014	\pm 0.25	1 PLACE ---	\pm 0.35	TITLE: PLUG & RECEPTACLE HOUSINGS 1 CIRCUIT .062/(1.57) DIA. SERIES		
INCH	METRIC												
3 PLACE \pm .010	---												
2 PLACE \pm .014	\pm 0.25												
1 PLACE ---	\pm 0.35												
DRAFT WHERE APPLICABLE MUST REMAIN WITHIN DIMENSIONS			FROM: MOLEX INCORPORATED U.S.A. LISLE, ILL. 60532										
DRWG. BY: JBS		CHK'D. BY: BW	PART NO. SD-1625-1**		DRWG. NO. SD-1625-1**								
APP'D. BY: BW		SCALE: 1:1	SEE CHART	SHEET NO. 2 DATE 6/10/03									
LTR.	REVISIONS	LTR.	REVISIONS	FILE NAME: SD16251X2	THIS DRAWING CONTAINS INFORMATION THAT IS PROPRIETARY TO MOLEX INC. AND SHOULD NOT BE USED WITHOUT WRITTEN PERMISSION.								

DWG. NO. SD-1625-IR

E

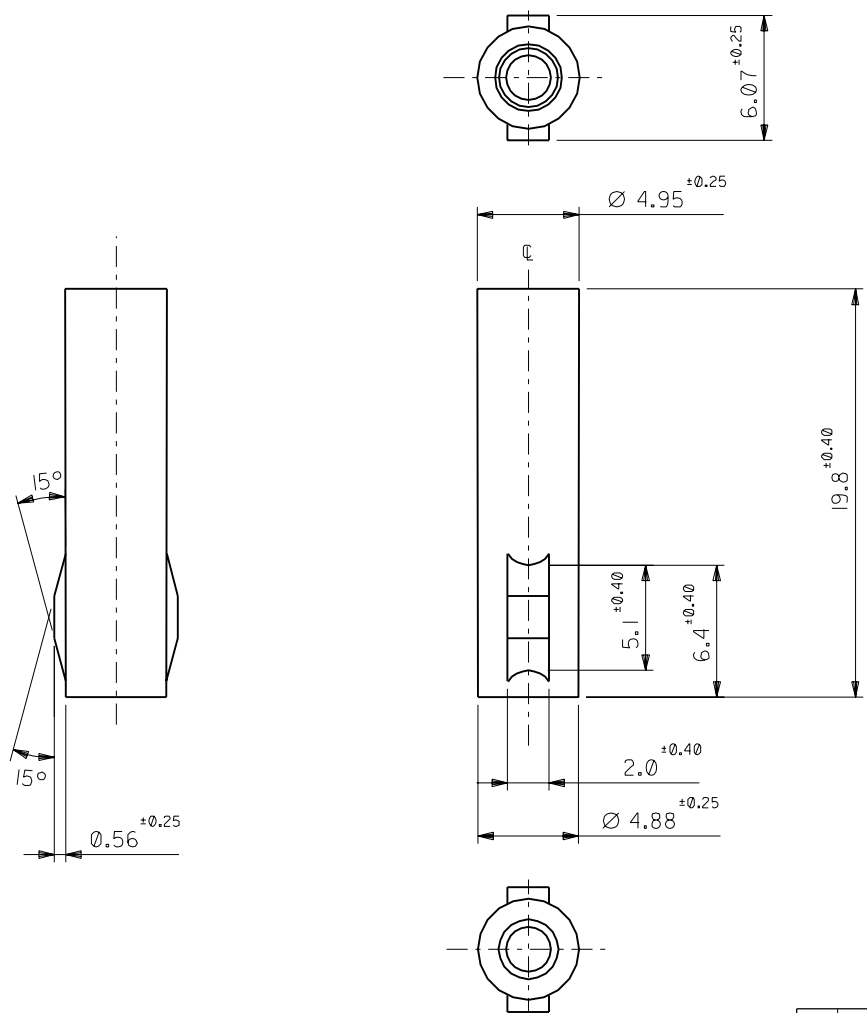
D

C

B

A

DIMENSIONS IN METRIC DO NOT SCALE DRAWING



注記
NOTE

材質: ナイロン66, 94V-2
MATERIAL: NYLON66, 94V-2

03-06-1011	1625-IR
PART NO.	ENG. NO.

材料 MATERIAL		☑中参照 REFER TO DRAWING		MOLEX-JAPAN CO.,LTD. 日本モレックス株式会社	
仕上げ FINISH		—		REVISE ONLY ON CAD SYSTEM	
適用電線範囲 WIRE RANGE		—		TITLE 名称	
被覆外径 INS. RANGE		—		.062 DIA. 1 CIRCUIT RECEPT. HOUSING	
DRAWN BY '96/07/01 H.IIJIMA		CHK'D BY '96/07/01 M.FUKUSHIMA		DWG. NO.	
APP'D BY '96/07/01 M.ENOMOTO		尺 度 SCALE 1:1		SD-1625-IR	
記号 LTR		変更内容 REVISION RECORD		REV	
B		再作図 REDRAWN (JC70305)		B	
DR. CHK.		日 付 DATE			
		7.1 M.F			
		%/07/01			
一般公差 GENERAL TOLERANCES					
角度 ANGLE	±30°				
30 以上 OVER	±0.3				
10 以上 OVER	±0.25				
10 未満 UNDER	±0.2				

8 7 6 5 4 3 2 1

8 7 6 5 4 3 2 1

F
E
D
C
B
A