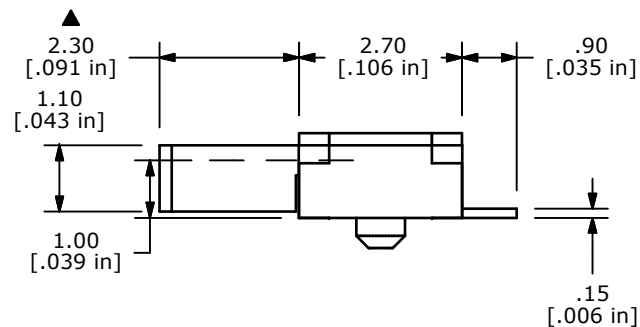
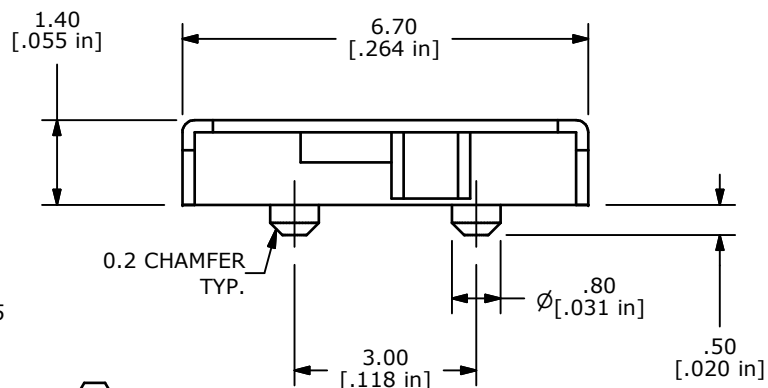
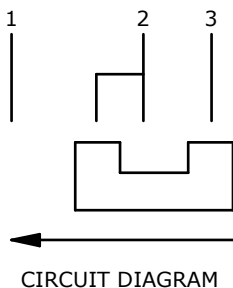
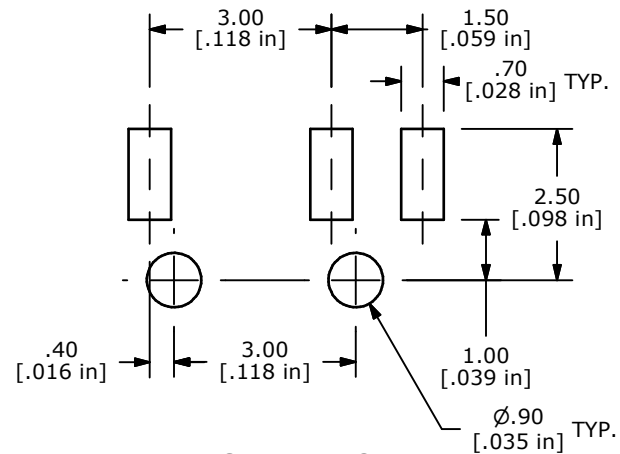
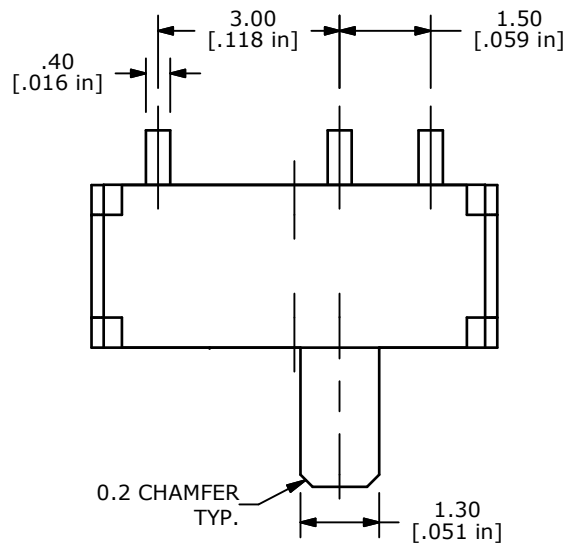
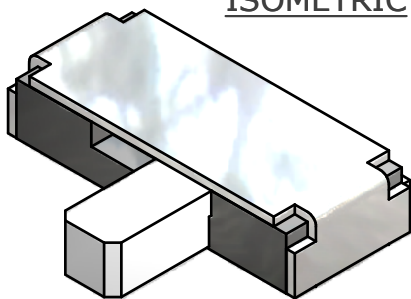


ISOMETRIC



- NOTES:
1. ALL DIMENSIONS IN MM [INCH]
 2. GENERAL TOLERANCE: X.X=± 0.4
X.XX=± 0.25
 3. TERM. NOS. FOR REF. ONLY
 4. RATING: 0.3A, 4VDC
 - ▲ 5. PLATING: 40 MICRO INCHES NICKEL
W/40 MICRO INCHES OF SILVER
 - ▲ 6. OPERATING FORCE: 150± 100GF
 7. OPERATING LIFE: 10,000 CYCLES
 8. TRAVEL: 1.50MM
 9. PACKAGING: TAPE & REEL - 2,000 PER
 10. ▲ DENOTES CRITICAL PARAMETER.
 11. 2002/95/EC (ROHS) COMPLIANT.



| | | | | |
|-----|--------|--------------------------------|----------|-----|
| D | 18606 | RE-DEFINE PACKAGING QTY. | 9/14/09 | BLR |
| C | 14330 | ADD PLATING NOTE, UPDATE TITLE | 9/21/04 | BLR |
| B | 13591 | CORRECT ACTUATOR LENGTH | 11/11/03 | BLR |
| A | 13514 | RELEASED FOR PRODUCTION | 10/8/03 | BLR |
| REV | PCR NO | DESCRIPTION | DATE | BY |



TITLE EG1260BNQ

| | | | | |
|-------|-----------|-----|---------|-----|
| SCALE | DATE | DR | DWG | REV |
| 4:1 | 9/14/2009 | BLR | D041211 | D |

THE INFORMATION CONTAINED IN THIS DOCUMENT IS PROPRIETARY TO E-SWITCH AND IS NOT TO BE COPIED OR TRANSFERRED