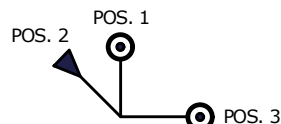


NOTES:

1. ALL DIMENSIONS IN MM [INCH]
2. GENERAL TOLERANCE: X.X = ±0.4
X.XX = ±0.25
3. TERM. NOS. FOR REF. ONLY
4. CONTACT RATING: 4A @125VAC/28VDC, 2A @250VAC
5. DIELECTRI STRENGTH: 1KV RMS min. AT SEA LEVEL
6. ELECTRICAL LIFE: 10,000 MAKE-AND-BREAK CYCLES AT FULL LOAD.
7. KEYCODE: A126

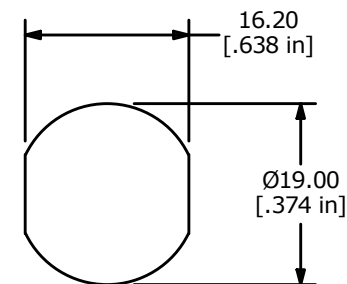


CIRCUIT: SP (45°/90° INDEXING)
CONTACT CONFIGURATION

SWITCH FUNCTION		
CONNECTED TERMINAL #		
POS. 1	POS. 2	POS. 3
8-1	8-7	1-3

LEGEND

- = DETENT POSITIONS
- ⊙ = KEY PULL POSSIBLE IN THESE POSITIONS
- ▲ = MOMENTARY POS.



RECOMENDED PANEL CUTOUT

D	21924	UPDATED AND REDRAWN IN INVENTOR	7/22/15	MW
C	19509	CHANGED THREAD DESCRIPTION	12/9/10	BGL
B	11566	REVISED	7/13/01	CJB
REV	PCR NO	DESCRIPTION	DATE	BY

THE INFORMATION CONTAINED IN THIS DOCUMENT IS PROPRIETARY TO E-SWITCH AND IS NOT TO BE COPIED OR TRANSFERRED



TITLE KO129AA126

SCALE	DATE	DR	DWG	REV
1:1	7/21/2015	AS	K200207	D