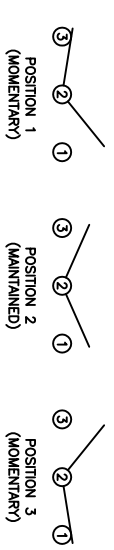
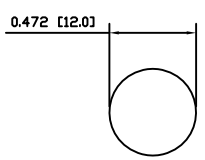
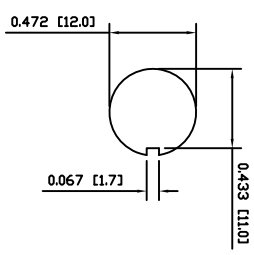
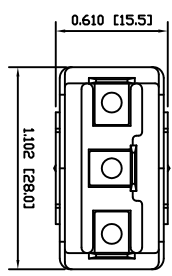


- MATERIALS**
- BODY: Phenolic, UL94 V-0
 - ACTUATOR: Nickel Plated Brass
 - BUSHING: Nickel Plated Brass
 - HOUSING: Nickel Plated Steel
 - HARDWARE: Nickel Plated Brass
 - SPACER PLATE: Epoxy Board
 - SPRING: Steel
 - ACTUATOR PLUNGER: Phenolic, UL94 V-0
 - MOBILE CONTACT BAR: Silver Plated Copper
 - CENTER PIVOT: Silver Plated Copper
 - CONTACTS: Silver Alloy Clad Copper
 - TERMINALS: Brass

- SPECIFICATIONS**
- FUNCTION: 1P2T (ON)-OFF-(ON)
 - RATINGS:
 - ANSI/UL1054 and CAN/CSA C22.2 No.55 (E194579): 20A 125VAC [cURus]
 - 15A 277VAC [cURus]
 - 1.5HP 125/277VAC [cURus]
 - CONTACT RESISTANCE: Initial: 10mΩ Max.
 - INSULATION RESISTANCE: 10MΩ Min.
 - DIELECTRIC STRENGTH: 1,500VAC for 1 Minute
 - OPERATING LIFE: 6,000 Cycles [cURus]
 - TEMPERATURE: Operating: 0°C to 85°C [cURus]
- APPROVALS: **ROHS COMPLIANT**



SCHEMATIC

SUGGESTED PANEL CUTOUT

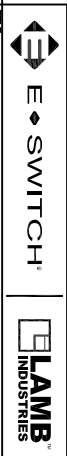
ALTERNATE PANEL CUTOUT

ACTUATOR BODY	REV.	DATE	BY
B	10/06/10	CAB	
B	10/06/10	CAB	
B	10/06/09	CAB	
B	10/06/09	CAB	

THE INFORMATION CONTAINED IN THIS DOCUMENT IS PROPRIETARY TO E-SWITCH AND IS NOT TO BE COPIED OR TRANSMITTED

CONNECTED PANEL CUTOUT, SPECIFICATIONS, AND MATERIALS	REV.	DATE	BY
A	19133	10/06/10	CAB
A	19133	09/08/09	CAB
A	19133	09/08/09	CAB

DIMENSIONS	INCHES [MILLIMETERS]
GENERAL TOLERANCES	±0.008 [±0.2] / ±1'
SCALE	DRAWING NOT TO SCALE



ST14DD00

PROJECTION	DRAWING NUMBER	DATE	REVISION
1	34-ST14DD00	JUNE 10, 2010	B