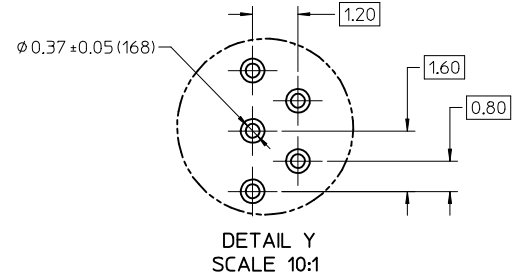
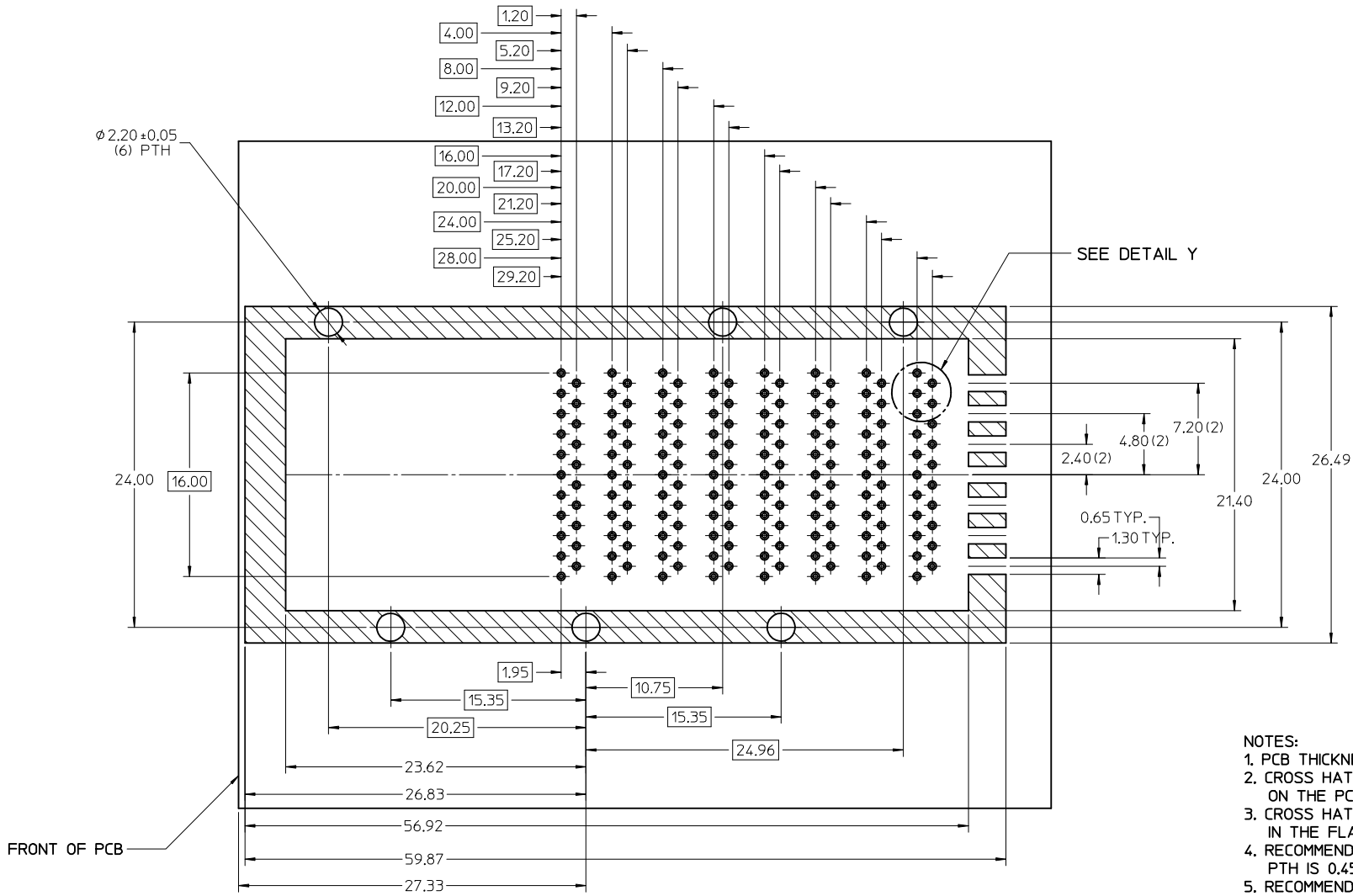


NOTES:

1. MATERIALS:
 CONNECTOR HOUSING: HIGH TEMPERATURE THERMOPLASTIC
 GLASS FILLED, UL94V-0
 COLOR: BLACK
 EMI HOUSING: DIE CAST ALLOY, NICKEL PLATED FINISH
 TERMINALS: COPPER ALLOY
 COVER: STAINLESS STEEL ALLOY
 EMI GASKET: CONDUCTIVE POLYMER
2. PLATING:
 CONTACT AREA: 0.764mm MIN. GOLD OVER 2.544mm MIN. NICKEL
 COMPLIANT AREA: 0.76-1.524mm TIN OVER 1.274mm MIN. NICKEL
3. PACKAGING SPECIFICATION: TRAY PACK PER PK-76024-001
4. MOUNTING HARDWARE: M2x8mm CAP SCREWS (NOT SUPPLIED)
5. THIS CONNECTOR IS DESIGNED TO MATE WITH MOLEX CABLE SERIES 111025
6. THIS CONNECTOR IS FOR PASSIVE COPPER CABLES ONLY
 NO OPTICAL MODULES OR ACTIVE COPPER CABLES

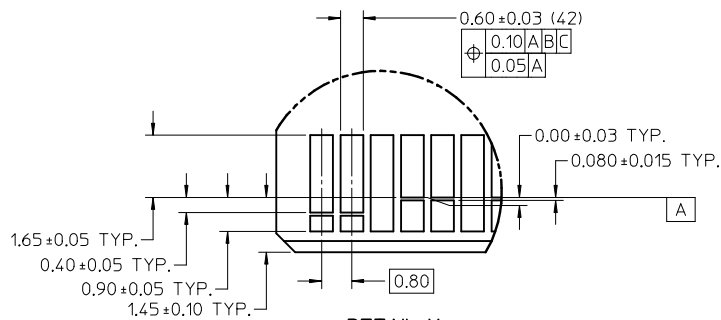
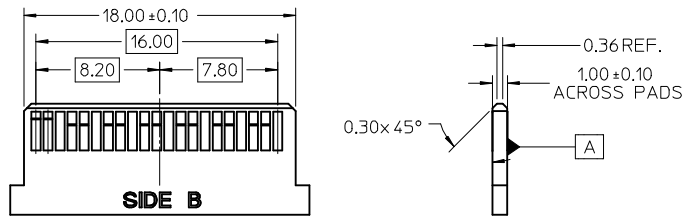
ADD LOCKING EMI_F EC NO: UCP2014-4635 DRAWING: GPRATT 2014/05/09 CHK'D: MBANAKIS 2014/05/09 APPR: MBANAKIS 2014/08/05	QUALITY SYMBOLS ∇=0 ∇=0 ∇=0	GENERAL TOLERANCES (UNLESS SPECIFIED)		DIMENSION STYLE MM ONLY		SCALE 2:1	DESIGN UNITS METRIC	THIRD ANGLE PROJECTION	
		4 PLACES ± --- ± --- 3 PLACES ± --- ± --- 2 PLACES ± 0.25 ± --- 1 PLACE ± --- ± --- 0 PLACE ± --- ± ---	mm INCH ± --- ± --- ± 0.25 ± --- ± --- ± --- ± --- ± ---	DRAWN BY K. LANG	DATE 2008/06/12	TITLE IPASS PLUS HSC 84/84 HIGH SPEED CHANNEL 0.8MM I/O		molex	
REV	DESCRIPTION	ANGULAR ±1/2° DRAFT WHERE APPLICABLE MUST REMAIN WITHIN DIMENSIONS		MATERIAL NO. 760240569	DATE 2014/05/01	DATE 2008/07/21	DOCUMENT NO. SD-76024-568	THIS DRAWING CONTAINS INFORMATION THAT IS PROPRIETARY TO MOLEX INCORPORATED AND SHOULD NOT BE USED WITHOUT WRITTEN PERMISSION	

RECOMMENDED PCB LAYOUT COMPONENT SIDE SHOWN

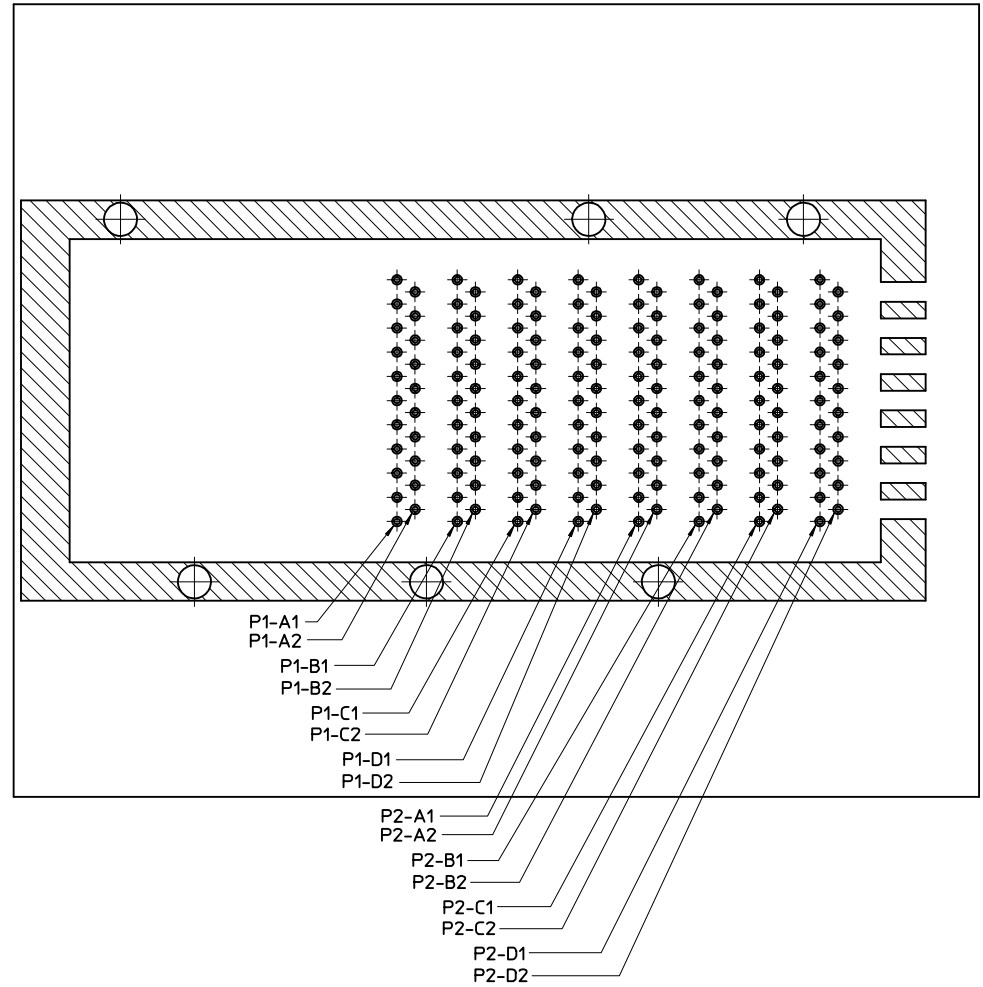
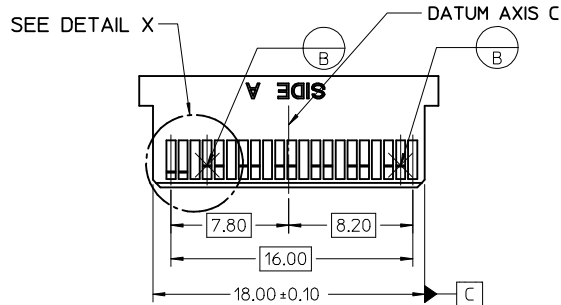


- NOTES:**
1. PCB THICKNESS: 1.57 MINIMUM
 2. CROSS HATCHED AREA TO BE CONDUCTIVE ON THE PCB
 3. CROSS HATCHED AREA TO BE INCORPORATED IN THE FLAT ROCK PRESS-FIT TOOLING
 4. RECOMMENDED DRILL SIZE FOR 0.37 ϕ FINISHED PTH IS 0.457 mm (0.018") \pm 77 DRILL.
 5. RECOMMENDED ANNULAR RING AROUND 0.37 ϕ FINISHED PTH IS 0.73 ϕ
 6. MINIMUM RECOMMENDED SPACING: 26.50mm

SEE SHEET 1 EC NO: UCP2014-4635 DRAWN: GPRATT 2014/05/09 CHKD: MBANAKIS 2014/05/09 APPR: MBANAKIS 2014/08/05	QUALITY SYMBOLS ▽=0 ▽=0 ▽=0	GENERAL TOLERANCES (UNLESS SPECIFIED)		DIMENSION STYLE	SCALE	DESIGN UNITS	THIRD ANGLE PROJECTION		
				MM ONLY	4:1	METRIC			
				ANGULAR $\pm 1/2^\circ$	DRAWN BY DATE			TITLE	
				DRAFT WHERE APPLICABLE MUST REMAIN WITHIN DIMENSIONS	K.LANG 2008/06/12			IPASS PLUS HSC 84/84 HIGH SPEED CHANNEL 0.8MM I/O	
				CHECKED BY DATE		molex			
				GPRATT 2014/05/09		DOCUMENT NO.			
				APPROVED BY DATE		SD-76024-568			
				M.BANAKIS 2008/07/21		SHEET NO.			
				MATERIAL NO.		2 OF 4			
				SEE SHEET 1		THIS DRAWING CONTAINS INFORMATION THAT IS PROPRIETARY TO MOLEX INCORPORATED AND SHOULD NOT BE USED WITHOUT WRITTEN PERMISSION			



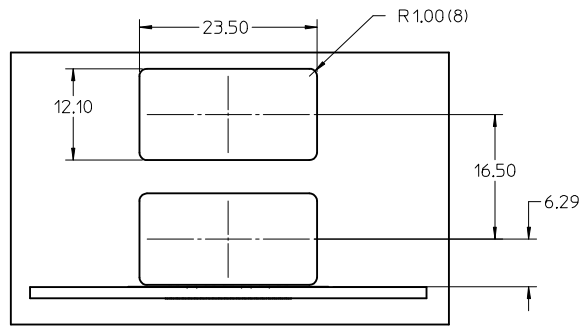
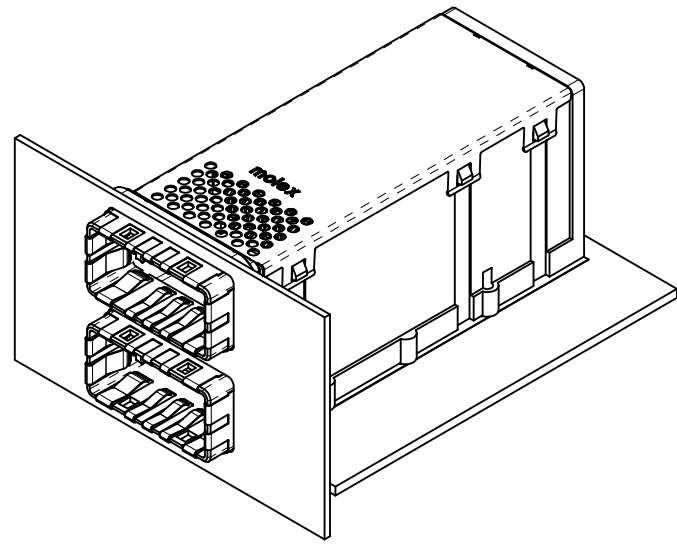
DETAIL X
SCALE 10:1



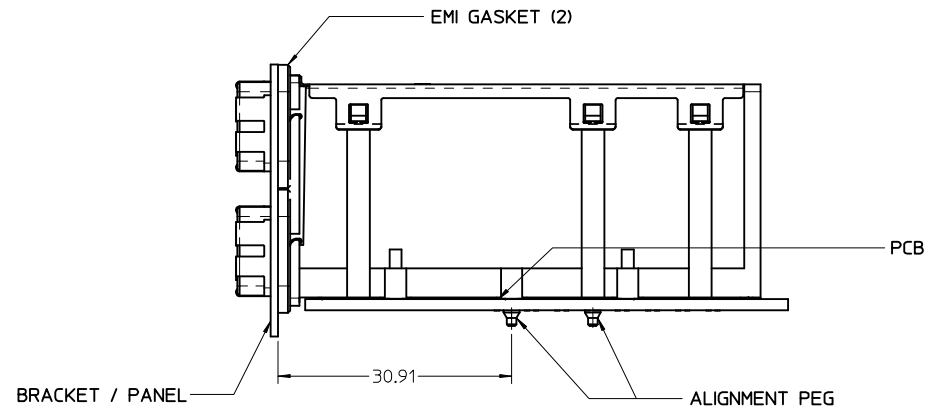
NOTES:

- 0.03 MINIMUM KEEP-OUT FOR SOLDER MASK AROUND ALL PADS
- DATUM B TARGETS ARE DEFINED BY THE RESPECTIVE PAD CENTER LINES AND THE LEADING EDGE OF THE TARGET PADS

SEE SHEET 1 EC NO: UCP2014-4635 DRAWING: GPRATT 2014/05/09 CHKD: MBANAKIS 2014/05/09 APPR: MBANAKIS 2014/08/05	QUALITY SYMBOLS ▽=0 ▽=0 ▽=0	GENERAL TOLERANCES (UNLESS SPECIFIED)		DIMENSION STYLE MM ONLY	SCALE 4:1	DESIGN UNITS METRIC	THIRD ANGLE PROJECTION								
		4 PLACES ± --- ± ---	3 PLACES ± --- ± ---	2 PLACES ± 0.25 ± ---	1 PLACE ± --- ± ---	0 PLACE ± --- ± ---	ANGULAR ± 1/2°	DRAFT WHERE APPLICABLE MUST REMAIN WITHIN DIMENSIONS	DRAWN BY K. LANG	DATE 2008/06/12	CHECKED BY GPRATT	DATE 2014/05/09	APPROVED BY M. BANAKIS	DATE 2008/07/21	TITLE IPASS PLUS HSC 84/84 HIGH SPEED CHANNEL 0.8MM I/O
MATERIAL NO.		SEE SHEET 1		THIS DRAWING CONTAINS INFORMATION THAT IS PROPRIETARY TO MOLEX INCORPORATED AND SHOULD NOT BE USED WITHOUT WRITTEN PERMISSION		molex									



RECOMMENDED PANEL CUT-OUT



ASSEMBLED VIEW

SEE SHEET 1 EC NO: UCP2014-4635 DRAWING: GPRATT 2014/05/09 CHK'D: MBANAKIS 2014/05/09 APPR: MBANAKIS 2014/08/05	QUALITY SYMBOLS	GENERAL TOLERANCES (UNLESS SPECIFIED)		DIMENSION STYLE	SCALE	DESIGN UNITS	THIRD ANGLE PROJECTION
	▽=0	mm	INCH	MM ONLY	2:1	METRIC	
	▽=0	4 PLACES ± --- ± ---	3 PLACES ± --- ± ---	DRAWN BY DATE	TITLE		
	▽=0	2 PLACES ± 0.25 ± ---	1 PLACE ± --- ± ---	CHECKED BY DATE	IPASS PLUS HSC 84/84 HIGH SPEED CHANNEL 0.8MM I/O		
	▽=0	0 PLACE ± --- ± ---	ANGULAR ±1/2°	GPRATT 2014/05/09			
REV	DESCRIPTION	DRAFT WHERE APPLICABLE MUST REMAIN WITHIN DIMENSIONS		APPROVED BY DATE	DOCUMENT NO.	SHEET NO.	
				M. BANAKIS 2014/07/21	SD-76024-568	4 OF 4	
				MATERIAL NO.	THIS DRAWING CONTAINS INFORMATION THAT IS PROPRIETARY TO MOLEX INCORPORATED AND SHOULD NOT BE USED WITHOUT WRITTEN PERMISSION		
				SEE SHEET 1			