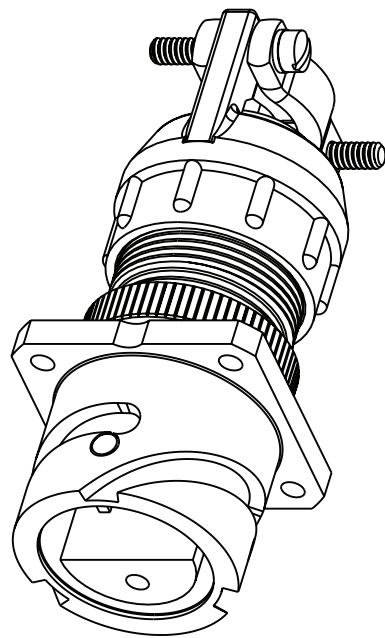
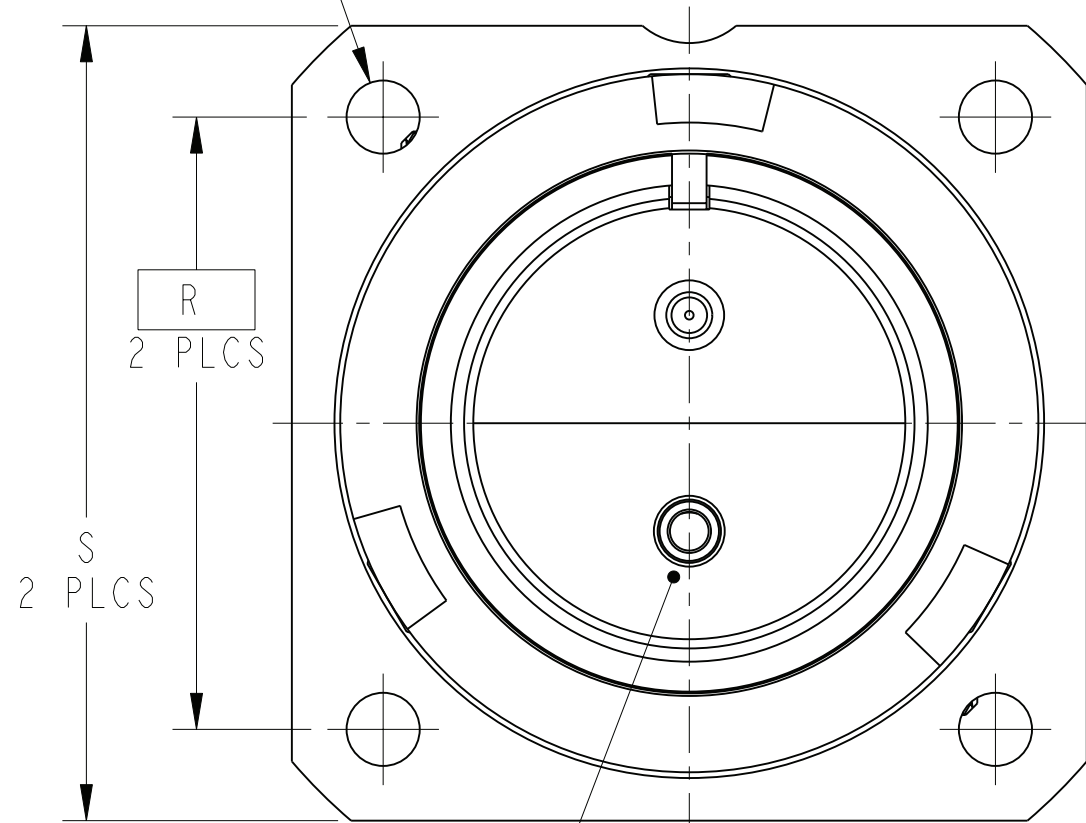


REV. A	SHEET 1 OF 2	71-621740/759
REVISIONS		
LTR	DESCRIPTION	DATE
A	INITIAL RELEASE	

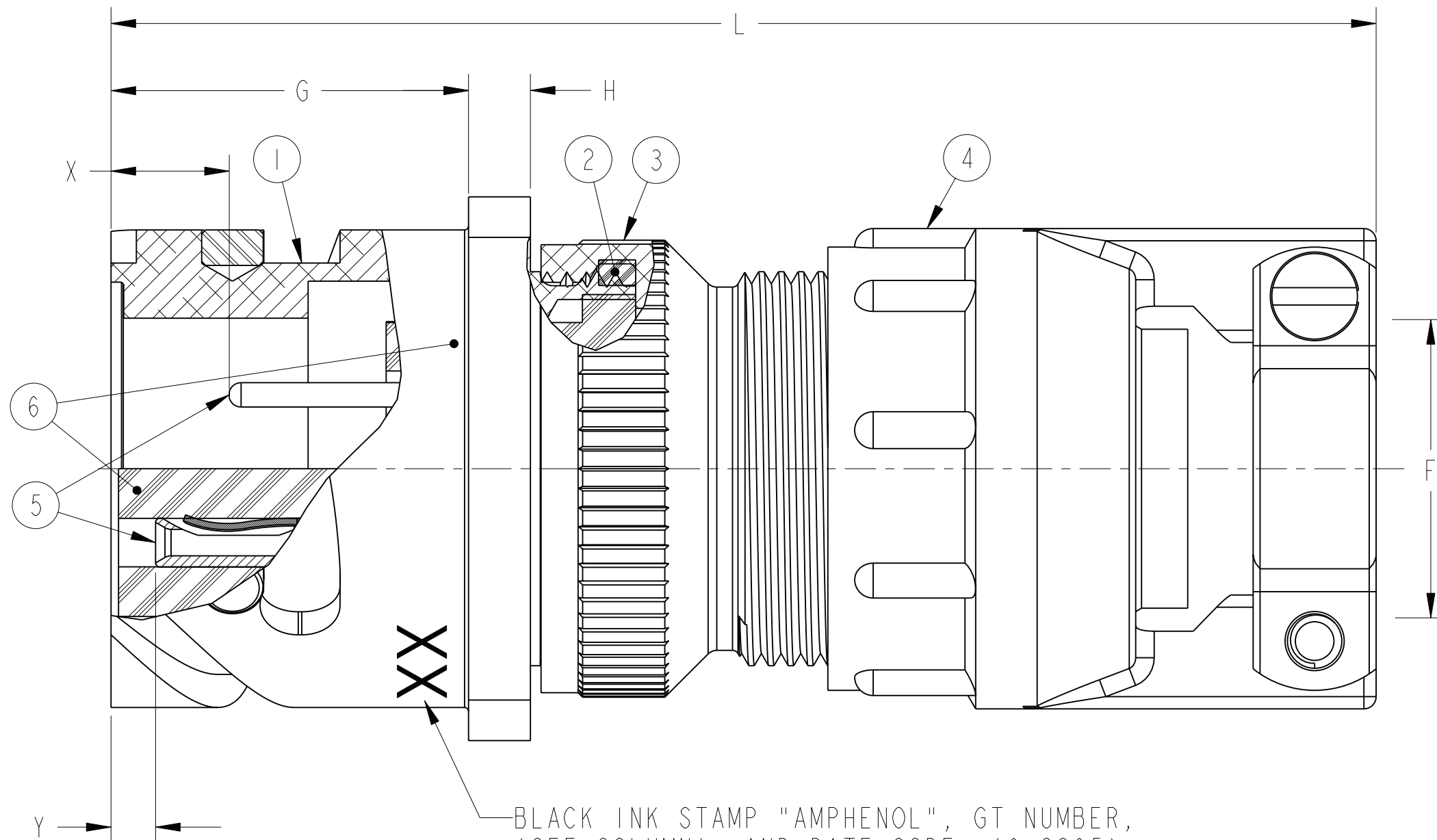
INTERFACE REQUIREMENTS			
CONTACT SIZE	SHELL SIZE	X	Y ±.040
16 SHORT	10SL, 14S, 16S	.087±.039	.079
16 LONG	16 THRU 40	.260 <sup>+.052</sup> -.041	.102
12	16 THRU 40	.118 <sup>+.039</sup> -.056	.102
0,4,8	16 THRU 40	.091±.039	.102



4 HOLES  
 Ø T  
 Ø .005 M



SEE NOTES  
2 & 4



BLACK INK STAMP "AMPHENOL", GT NUMBER, (SEE COLUMN), AND DATE CODE, (9-3895), APPROX .125 HIGH, IN APPROX LOCATION SHOWN PER 9-3856-5.  
 EXAMPLE:  
 AMPHENOL GTC00CF24-11P 0952

POS	QTY	PART NUMBER	DESCRIPTION	NOTE
6		SEE NOTE 10	CONTACTS	
5	1	10-0748XX-( )	INSERT	4
4	1	SEE COLUMN	CLAMP ASSEMBLY	
3	1	10-564867-XX3	ADAPTER	
2	1	10-101379-XX1	GASKET	
1	1	SEE COLUMN	SHELL, RECEPTACLE	

SEE SHEET 2.

NOTES:

THE USE OF THIS DOCUMENT IS UNLIMITED. HOWEVER, DOCUMENTS REFERENCED HEREON MAY CONTAIN LIMITED RIGHTS DATA.

RELEASED / Nov . 02 2009, 11:10:42 AM

N/A	PRO/ENGINEER INFORMATION
N/A	Pro/e Model Used: gtc00cf.assem
NEXT ASSEMBLY	Drawing Name: 71-621740-759

UNLESS OTHERWISE SPECIFIED  
 LINEAR DIMENSIONS ARE IN INCHES  
 TOLERANCES:  
 .XXXX = ±.0005 ANGLES= ±2°  
 .XXX = ±.010  
 .XX = ±.03  
 .X = ±.1  
 DIM. & TOL. PER ASME Y14.5M;  
 DRM PER MIL-DTL-31000;  
 OTHER Amphenol Sids. PER 9-3800  
 LEGENDS:  
 =FLAG NOTE CALL OUT  
 REFERENCE ONLY

SPECIFICATIONS  
 MATERIAL SPEC.  
 9-1936  
 PROCESS SPEC.  
 SEE NOTE 5

APPROVALS	DATE
PREPARED BY A.Prescott	
ENGINEER IN CHARGE R.Barnes	31-0c1-09
DESIGN MANAGER R.Barnes	
DESIGN ACTIVITY GROUP C & I	
THIRD ANGLE PROJECTION	

PARTS LIST			
AMPHENOL CORPORATION 40-60 DELAWARE AVENUE SIDNEY, N.Y. 13858			
CONNECTOR, ELECTRICAL RECEPTACLE, TYPE GTC00CF-( ), OLIVE DRAB CADMIUM PLATED			
SIZE C	CAGE CODE 77820	DOCUMENT NO. 71-621740/759	REV. A
SCALE: 3.0		REF: 92-622860/879	SHEET 1 OF 2

DOCUMENT NO. 71-621740/759  
 SHEET 1 OF 2  
 REV. A

REV. A  
 SHEET 1 OF 2  
 DOCUMENT NO. 71-621740/759

REV. A  
 SHEET 1 OF 2  
 DOCUMENT NO. 71-621740/759

ASSEMBLY NUMBER	SIZE	GT NUMBER	SHELL	CLAMP ASSEMBLY	F		G +.016 -.000	H ±.008	L MAX	R	S ±.012	T DIA ±.002
					FREE DIA	CLOSED DIA						
71-621740-()	8S	NOT AVAILABLE										
71-621741-()	10S	NOT AVAILABLE										
71-621742-()	10SL	GTC00CF10SL-()	10-580920-113	10-350349-113	.312	.094	.559	.110	2.740	.717	1.000	.128
71-621743-()	12S	NOT AVAILABLE										
71-621744-()	12	NOT AVAILABLE										
71-621745-()	14S	GTC00CF14S-()	10-580920-143	10-350349-143	.438	.230	.559	.126	2.898	.906	1.181	.128
71-621746-()	14	NOT AVAILABLE										
71-621747-()	16S	GTC00CF16S-()	10-580920-163	10-350349-163	.531	.316	.559	.126	2.898	.969	1.280	.128
71-621748-()	16	GTC00CF16-()	10-580920-173	10-350349-173	.531	.316	.748	.126	3.216	.969	1.280	.128
71-621749-()	18	GTC00CF18-()	10-580920-183	10-350349-183	.625	.378	.748	.157	3.307	1.063	1.378	.128
71-621750-()	20	GTC00CF20-()	10-580920-203	10-350349-203	.750	.445	.748	.157	3.311	1.157	1.496	.128
71-621751-()	22	GTC00CF22-()	10-580920-223	10-350349-203	.750	.445	.748	.157	3.350	1.252	1.614	.128
71-621752-()	24	GTC00CF24-()	10-580920-243	10-350349-243	.938	.611	.811	.157	3.484	1.374	1.752	.148
71-621753-()	28	GTC00CF28-()	10-580920-283	10-350349-243	.938	.611	.811	.157	3.736	1.563	2.000	.148
71-621754-()	32	GTC00CF32-()	10-580920-323	10-350349-323	1.250	.922	.874	.157	4.142	1.752	2.244	.171
71-621755-()	36	GTC00CF36-()	10-580920-363	10-350349-363	1.315	.922	.874	.157	4.390	1.937	2.500	.171
71-621756-()	40	GTC00CF40-()	10-580920-403	10-350349-403	1.625	1.180	.874	.157	4.988	2.185	2.752	.171
71-621757/59		NOT AVAILABLE										

TO COMPLETE, ADD APPLICABLE INSERT ARRANGEMENT SUFFIX PER 9-2437.

CONTACT SIZE	0	4	8	12	16
WELL DIA	.453±.005	.281 <sup>+.005</sup> <sub>-.004</sub>	.179 <sup>+.004</sup> <sub>-.002</sub>	.098 <sup>+.004</sup> <sub>-.001</sub>	.063 <sup>+.004</sup> <sub>-.001</sub>
WELL DEPTH <sup>+.031</sup> <sub>-.000</sub>	.592	.500	.500	.250	.250

5. PROCESS SPEC:  
 ASSY 9-9238  
 TEST 9-3106-18  
 9-3856-5, 9-3895, 9-2437, 9-1936

4. INSERTS ARE NOT REMOVABLE.

3. DRAWING ILLUSTRATES FINAL ASSEMBLY.

2. FOR CONTACT SIZE, SPACING AND SERVICE RATING, SEE MIL-STD-1651 OR L-11908/48-().

1. UNIT MEETS THE APPLICABLE REQUIREMENTS OF MIL-C-5015.

10. APPLY A LIGHT FILM OF 9-1936 TO ADAPTER GASKET.

9. PACKAGE PER PRODUCTION PROCESS SHEET.

8. SEE SEPARATE PARTS LIST FOR COMPONENT PART NUMBERS AND QUANTITIES.

7. FOR MATING CONNECTOR ASSEMBLIES, SEE 71-580450/469 AND OTHERS.

6. SEE WORK ORDER FOR PERMISSIBLE ADDITIONAL OR ALTERNATE STAMPING.

NOTES:

THE USE OF THIS DOCUMENT IS UNLIMITED. HOWEVER, DOCUMENTS REFERENCED HEREON MAY CONTAIN LIMITED RIGHTS DATA.

RELEASED / Nov . 02 2009, 11:10:42 AM

SIZE <b>C</b>	CAGE CODE <b>77820</b>	DOCUMENT NO. <b>71-621740/759</b>	REV. <b>A</b>
SCALE: 2.0		REF. 92-622860/879	SHEET 2 OF 2

71-621740/759

SHEET 2 OF 2

REV. A

C

B

A

REV. A

SHEET 2 OF 2

71-621740/759

A