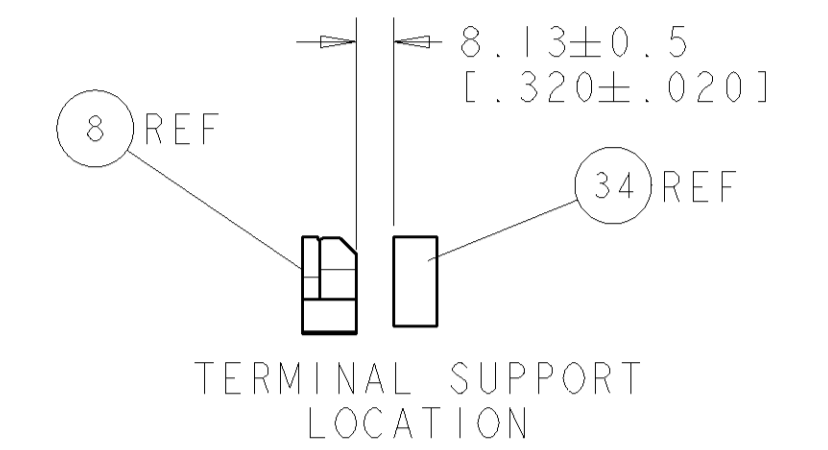
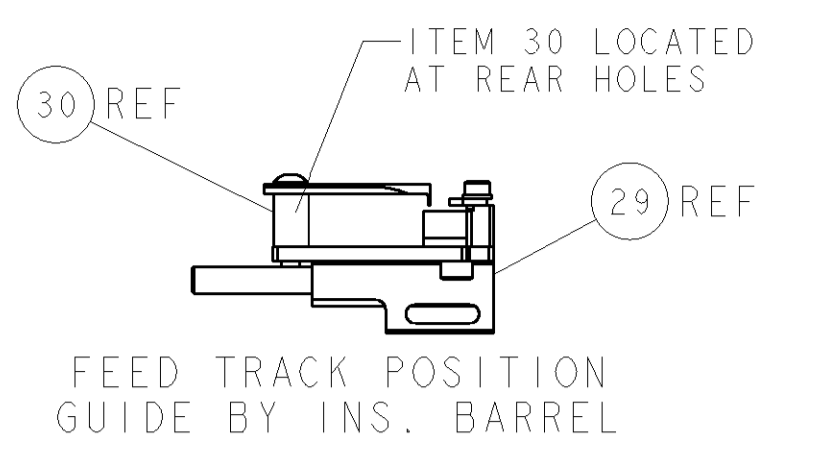
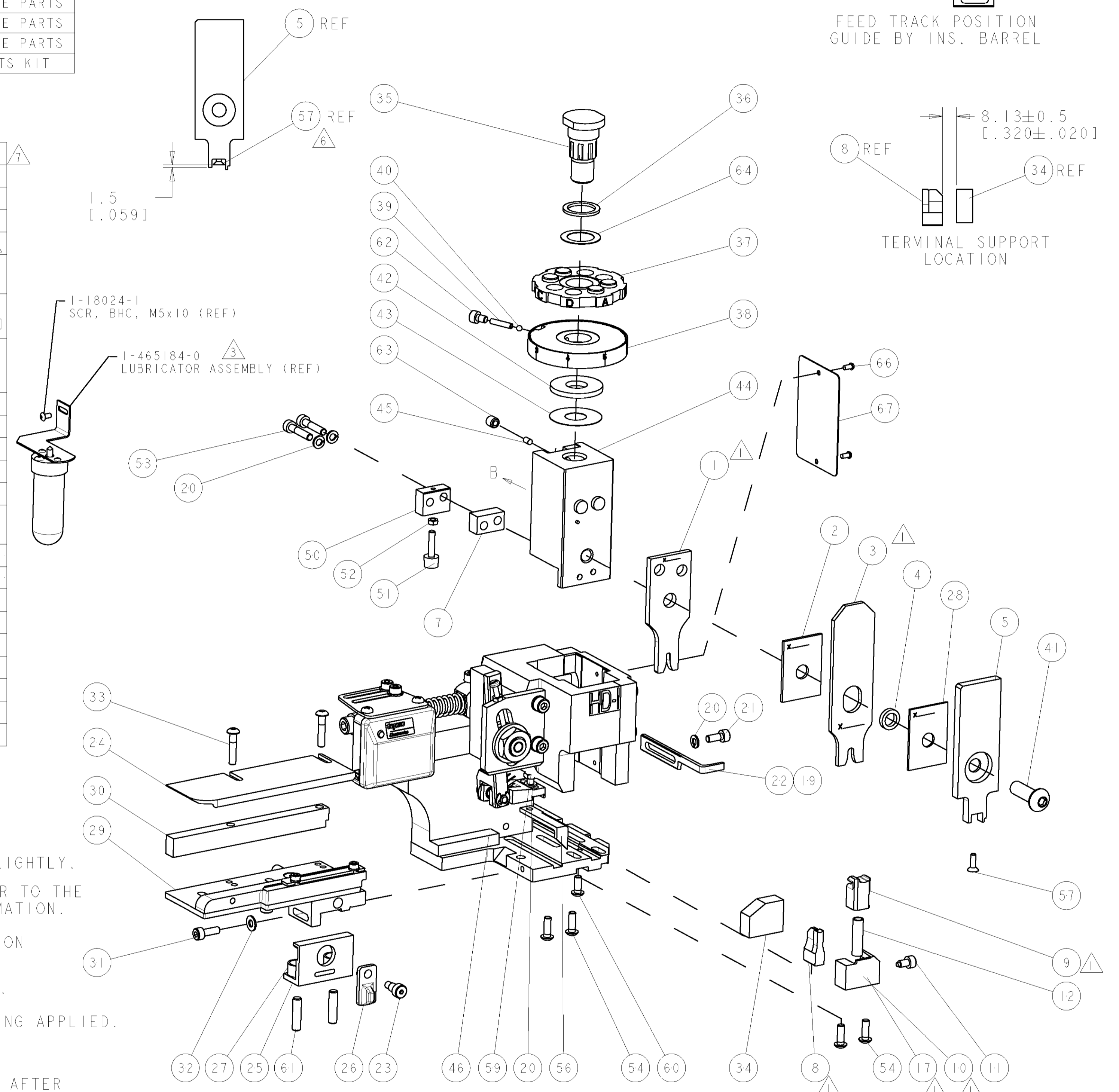
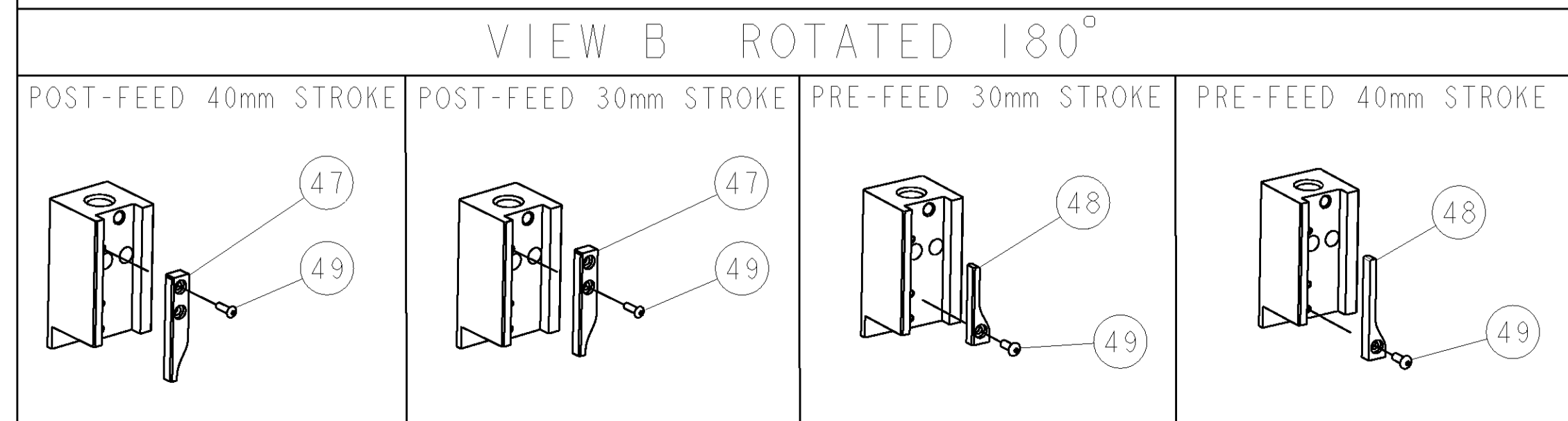


PART NUMBER	REV	TERMINATOR	FEED TYPE	DESCRIPTION
1426644-1	A	LEADMAKER	MECH POST FEED	CUTS CARRIER
1426644-2	A	BENCH	MECH PRE FEED	CUTS CARRIER
1426644-6	A	LEADMAKER	MECH POST FEED	CONTINUOUS CARRIER
7-1426644-1	A	LEADMAKER	MECH POST FEED	-1 AND SPARE PARTS
7-1426644-2	A	BENCH	MECH PRE FEED	-2 AND SPARE PARTS
7-1426644-6	A	LEADMAKER	MECH POST FEED	-6 AND SPARE PARTS
7-1426644-7	A	-	-	SPARE PARTS KIT

CRIMP DATA		DELPHI TERMINAL		DELPHI CRIMP SPECS	
TERMINAL NAME: TAXI TERMINAL M M/P 150 SEALED					
CRIMP	SIZE	TYPE	RANGE		
WIRE	2.03 [1.080 IN]	F	0.35-0.50mm ²		
INSUL	4.06 [1.160 IN]	O	1.47-2.40 [1.058-.094 IN]		
WIRE STRIP LENGTH		APPL INSTRUCTIONS			
5.60 [1.220 IN]		408-8322			
TERMINAL APPL SPEC		FEED		12.70 [1.500 IN]	
TERMINALS APPLIED					
TE TERM PN	MANUF TERM PN	TE SEAL PN	MANUF SEAL PN		
1572275-1	12077628	286934-1	12052925		
1572275-2	12191888	286934-2	15324974		
1572275-3	15359163	1572277-1	12048087		
WIRE SIZE	CRIMP HEIGHT	PINPN & LENGTH [IN]			
0.50mm ²	1.15 ± 0.05 [1.045 ± .002 IN]	3-354779-8 [1.3180]			
0.35mm ²	1.10 ± 0.05 [1.043 ± .002 IN]	4-354779-2 [1.3200]			

- △ RECOMMENDED SPARE PARTS.
- 2. GREASE RAM, CAM, CAM FOLLOWER AND FEED ROD LIGHTLY.
- △ CERTAIN TERMINALS REQUIRE LUBRICATION. REFER TO THE APPLICATOR INSTRUCTION SHEET FOR MORE INFORMATION.
- 4. LUBRICATE DAILY PER THE APPLICATOR INSTRUCTION SHEET SUPPLIED WITH THE APPLICATOR.
- △ THIS APPLICATOR APPLIES TERMINAL WITH A SEAL. INSULATION DIA QUOTED IS RANGE OF TERMINAL. WIRE INSULATION DIA IS DEPENDENT ON SEAL BEING APPLIED. FOR SEAL PART NUMBERS, AS SHOWN ABOVE, INS RANGE IS 1.29-1.70.
- △ APPLY TORQ-SEAL IN ALLEN SOCKET TO FILL HOLE AFTER FLAT HD HAS BEEN ADJUSTED TO CORRECT HEIGHT AT QUALIFICATION. APPLY #1-23419-5 LOC-TITE TO THREADS.
- △ CRIMP DATA SUPPLIED BY THE TERMINAL MANUFACTURER.
- △ SEE DELPHI DATA SHEET FOR SPECIFIC WIRE DETAILS.
- △ 0.35mm WIRE SIZE MAX TENSILE ACHIEVABLE 50N.



LOC	DIST	REV	DESCRIPTION	DATE	BY	APPD
A	66		SEE ECO-07-019475	20AUG2007	LJL	MC
		A1	SEE ECR-07-021685	13SEP2007	LL	MC

QTY	UNIT	DESCRIPTION	ITEM NO						
-	-	-	73						
-	-	-	72						
-	-	-	71						
-	-	-	70						
-	-	-	69						
-	-	-	68						
-	-	-	67						
-	-	-	66						
-	-	-	65						
-	-	-	64						
-	-	-	63						
-	-	-	62						
-	-	-	61						
-	-	-	60						
-	-	-	59						
-	-	-	58						
-	-	-	57						
-	-	-	56						
-	-	-	55						
-	-	-	54						
-	-	-	53						
-	-	-	52						
-	-	-	51						
-	-	-	50						
-	-	-	49						
-	-	-	48						
-	-	-	47						
-	-	-	46						
-	-	-	45						
-	-	-	44						
-	-	-	43						
-	-	-	42						
-	-	-	41						
-	-	-	40						
-	-	-	39						
-	-	-	38						
-	-	-	37						
-	-	-	36						
-	-	-	35						
-	-	-	34						
-	-	-	33						
-	-	-	32						
-	-	-	31						
-	-	-	30						
-	-	-	29						
-	-	-	28						
-	-	-	27						
-	-	-	26						
-	-	-	25						
-	-	-	24						
-	-	-	23						
-	-	-	22						
-	-	-	21						
-	-	-	20						
-	-	-	19						
-	-	-	18						
-	-	-	17						
-	-	-	16						
-	-	-	15						
-	-	-	14						
-	-	-	13						
-	-	-	12						
-	-	-	11						
-	-	-	10						
-	-	-	9						
-	-	-	8						
-	-	-	7						
-	-	-	6						
-	-	-	5						
-	-	-	4						
-	-	-	3						
-	-	-	2						
-	-	-	1						
-77	-76	-72	-71	-6	-2	-1	PART NO	DESCRIPTION	ITEM NO

-77	-76	-72	-71	-6	-2	-1	PART NO	DESCRIPTION	ITEM NO
-	-	-	-	-	-	-	-	-	84
-	-	-	-	-	-	-	-	-	83
-	-	-	-	-	-	-	-	-	82
-	-	-	-	-	-	-	-	-	81
-	-	-	-	-	-	-	-	-	80
-	-	-	-	-	-	-	-	-	79
-	-	-	-	-	-	-	-	-	78
-	-	-	-	-	-	-	-	-	77
-	-	-	-	-	-	-	-	-	76
-	-	-	-	-	-	-	-	-	75
-	-	-	-	-	-	-	-	-	74

SET UP GAGE 458637-3

LOC A DIST 66

DATE: 09 JUL 2007

BY: M. CLIFFORD

NAME: M. CLIFFORD

PRODUCT SPEC: SIDE FEED HDI APPLICATOR

APPLICATION SPEC: See Table

SCALE: 3:5

REV: A1