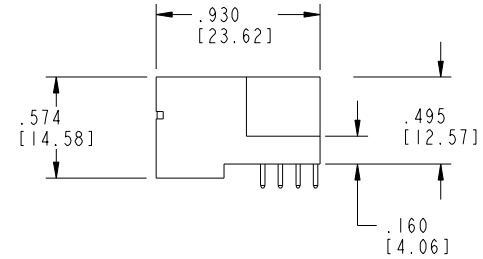
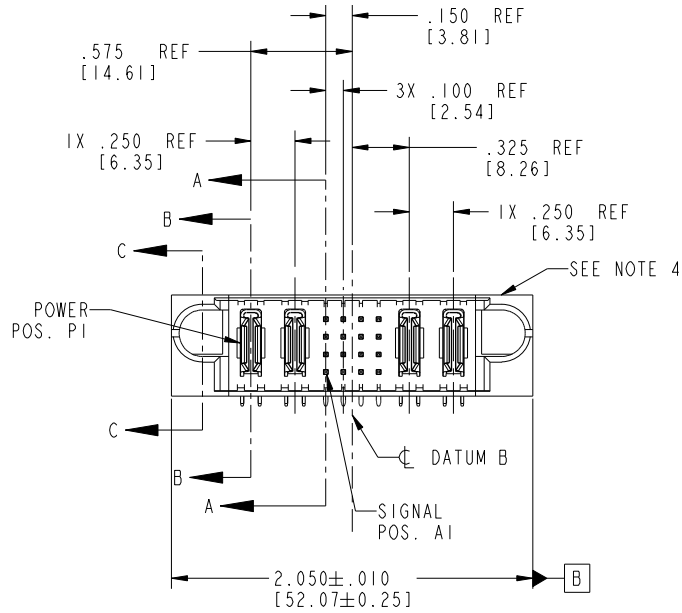


Tous droits strictement reserves. Reproduction ou communication a des tiers interdite sous quelque forme que ce soit sans autorisation écrite du propriétaire. Propriete de c FCI. Droits de reproduction FCI.



All rights strictly reserved. Reproduction or issue to third parties in any form whatever is not permitted without written authority from the proprietor. Property of FCI. Copyright FCI.

PRODUCT NO. 51730-112 NOTE ③	ROWS D C B A	POWER		SGN				POWER			
		E1	P1	P2	1	2	3	4	P3	P4	E2



CODE	DIM "M" MATING LENGTH	CONTACT TYPE
U	.270 [6.86]	SIGNAL
T	.270 [6.86]	SIGNAL
S	.270 [6.86]	SIGNAL
R	.270 [6.86]	SIGNAL
PA	N/A [N/A]	POWER
E	.220 [5.59]	SIGNAL
F	.220 [5.59]	SIGNAL
G	.220 [5.59]	SIGNAL
H	.220 [5.59]	SIGNAL

mat'l code				SEE NOTE 2		tolerances unless otherwise specified		CUSTOMER		FCI	
ltr	ecn no.	dr	date	linear	.XX±.01/0.X±0.3	projection	COPY	www.fciconnect.com			
A	DG05-0189	LH	06/24/05		.XXX±.005/0.XX±0.13		title	2P + 16S + 2P			
B	DG05-0455	CS	11/12/05	angles	.XXX±.0020/0.XXX±0.051			RIGHT ANGLE SOLDER HEADER			
C	DG08-0253	SH	09/13/08		0°±2°	INCH/MM	product family	PwrBlade	code		
sheet index		revision sheet	C	C	C	C	size	dwg no	213		
			1	2	3	4	scale	A	51730-112		
							1:1	sheet		1 of 4	

1 | 2

Pro/E

3 |

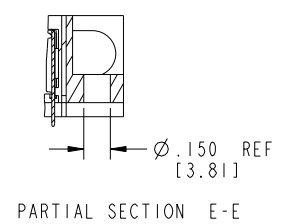
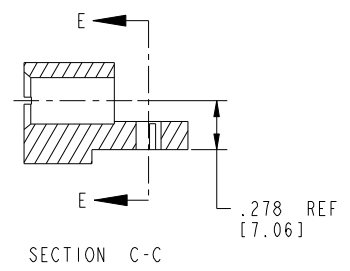
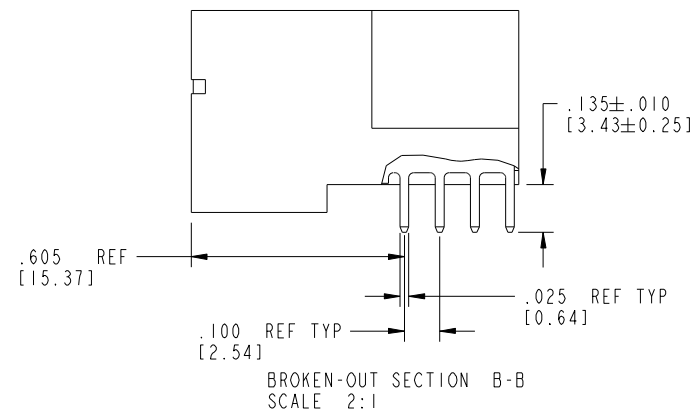
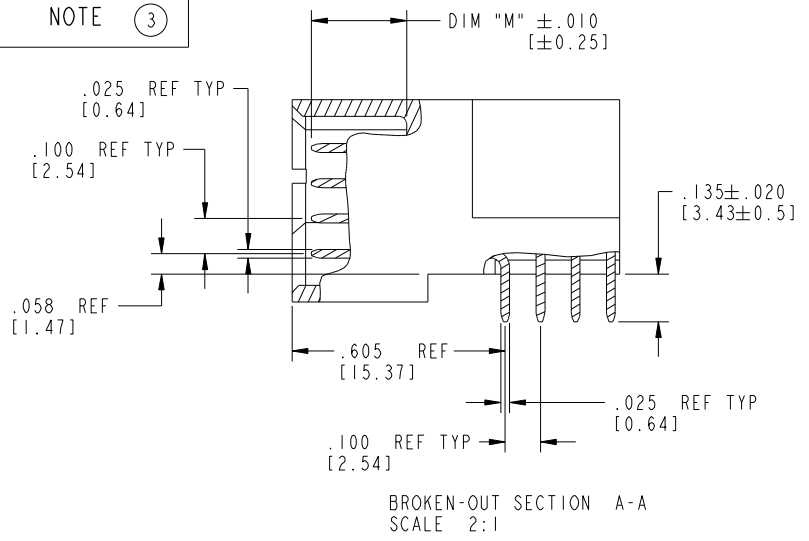
cage code 22526

4

Tous droits strictement réservés. Reproduction ou communication à des tiers interdite sous quelque forme que ce soit sans autorisation écrite du propriétaire. Propriété de c.FCI. Droits de reproduction FCI.

All rights strictly reserved. Reproduction or issue to third parties in any form whatever is not permitted without written authority from the proprietor. Property of FCI. Copyright FCI.

PRODUCT NUMBER  
51730-112--  
NOTE (3)



mal't code		SEE NOTE 2		tolerances unless otherwise specified		CUSTOMER		FCI		www.fciconnect.com	
ltr	ecn no.	dr	date	linear	.XX±.01/0.X±0.3	COPY					
C				projection	.XXX±.005/0.XX±0.13	projection		title 2P + 16S + 2P			
				angles	.XXX±.0020/0.XXX±0.051	INCH/MM		RIGHT ANGLE SOLDER HEADER			
				dr	0°±2°	scale		product family PwrBlade		code 213	
				enr	LH 06/24/05	1:1		size dwg no		sheet 2 of 4	
				chr	LH 06/24/05			A 51730-112			
				appd	VICTOR LIN 06/24/05						
					JOSEPH HSIA 06/24/05						
sheet index	revision sheet										

cage code 22526

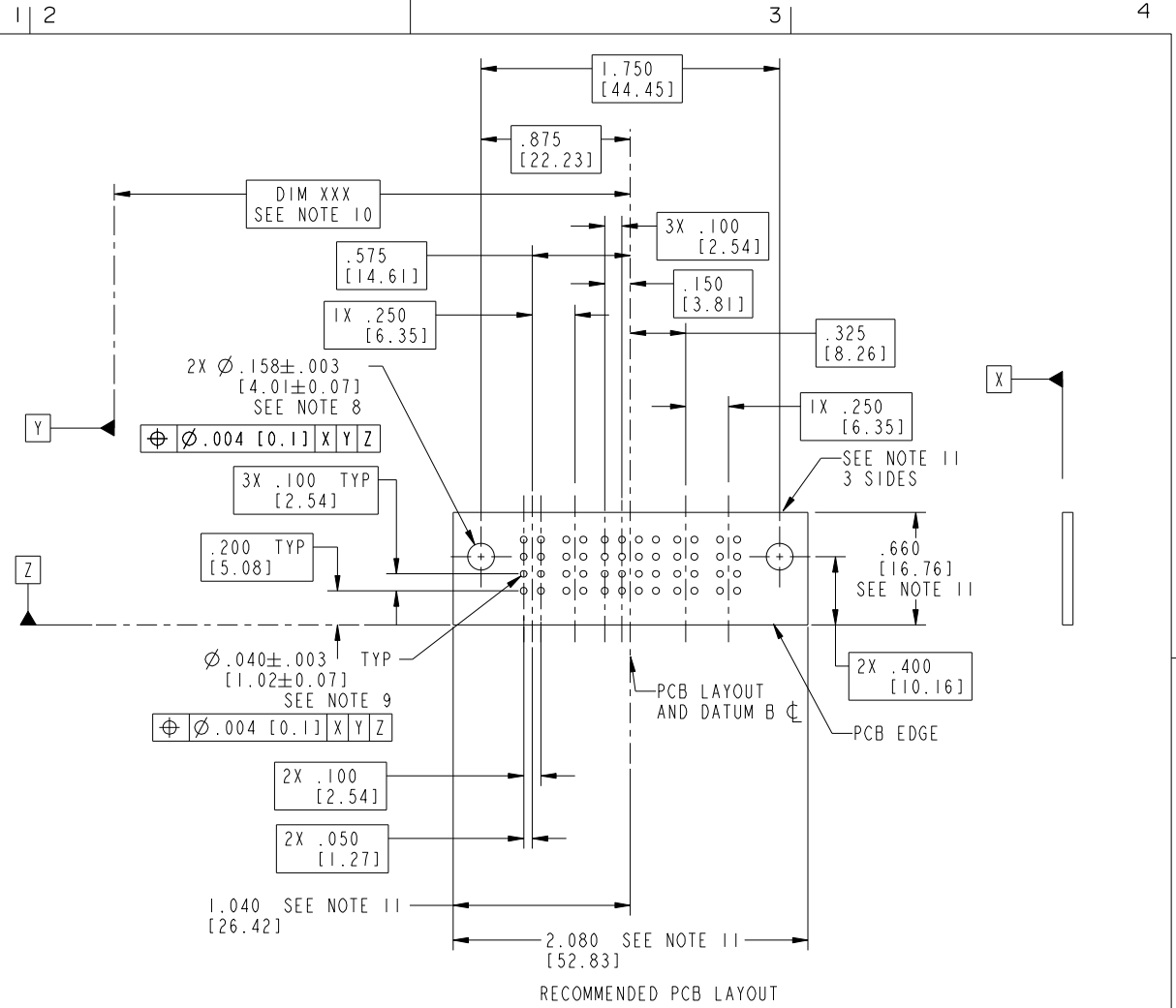
Pro/E

Tous droits strictement reserves. Reproduction ou communication a des tiers interdite sous quelque forme que ce soit sans autorisation écrite du propriétaire. Propriete de c FCI. Droits de reproduction FCI.



All rights strictly reserved. Reproduction or issue to third parties in any form whatever is not permitted without written authority from the proprietor. Property of FCI. Copyright FCI.

PRODUCT NUMBER  
51730-112\_\_  
NOTE (3)



RECOMMENDED PCB LAYOUT

mat'l code		SEE NOTE 2		tolerances unless otherwise specified		CUSTOMER		 www.ficconnect.com	
ltr	ecn no.	dr	date	linear	.XX±.01/0.X±0.3	COPY		title	
C					.XXX±.005/0.XX±0.13	projection		2P + 16S + 2P	
				angles	.XXX±.0020/0.XXX±0.051			RIGHT ANGLE SOLDER HEADER	
				dr	0° ± 2°	INCH/MM		product family	
				enr	LH 06/24/05	scale		PwrBlade	
				chr	LH 06/24/05	1:1		code	
				appd	VICTOR LIN 06/24/05	A		213	
					JOSEPH HSIA 06/24/05	51730-112		sheet	
sheet index	revision sheet					cage code		3 of 4	
						22526		4	

Pro/E

cage code 22526

Tous droits strictement reserves. Reproduction ou communication a des tiers interdite sous quelque forme que ce soit sans autorisation écrite du propriétaire. Propriete de c FCI. Droits de reproduction FCI.



All rights strictly reserved. Reproduction or issue to third parties in any form whatever is not permitted without written authority from the proprietor. Property of FCI. Copyright FCI.

PRODUCT NUMBER  
51730-112-  
NOTE (3)

NOTES:

1. DIMENSIONS AND TOLERANCES ARE IN ACCORDANCE WITH ASME Y14.5M, 1994 UNLESS OTHERWISE SPECIFIED.

CONNECTOR NOTES:

(2) HOUSING MATERIAL: UL 94 V-0 GLASS FILLED  
HIGH-TEMP THERMOPLASTIC  
POWER CONTACT MATERIAL: COPPER ALLOY  
SIGNAL PIN MATERIAL: COPPER ALLOY

3. PLATING:  
△ SEE ITEM 1 & 2 IN PRINT 10064183 FOR PLATING SPEC OF 51730-112 AND 51730-112LF RESPECTIVELY

(4) MANUFACTURER'S NAME, P/N, AND DATE CODE TO APPEAR ON THIS SURFACE.

5. PRODUCT SPECIFICATION GS-12-149.  
APPLICATION SPECIFICATION BUS-20-067.

6. PACKAGED IN TRAYS.

PCB NOTES:

7. ALL HOLE DIAMETERS ARE FINISHED HOLE SIZE.

(8) MOUNTING HOLES, WHERE APPLICABLE, ARE UNPLATED.

(9)  $\varnothing .0453 \pm .0010$  [ $1.151 \pm 0.025$ ] DRILLED HOLES PLATED WITH  
.0003 [0.008] MIN SnPb OVER .001 [0.03]  
TO .003 [0.08] Cu PLATING TO ACHIEVE  
 $\varnothing .040 \pm .003$  [ $1.02 \pm .07$ ] HOLE.

(10) "DIM XXX" TO BE DETERMINED BY THE CUSTOMER.

(11) CONNECTOR KEEP-OUT ZONE.

12:A △ SYMBOL WILL BE NEXT TO ANY DIMENSION, VIEW, OR NOTE WHICH HAS BEEN MODIFIED WITH CURRENT DRAWING VERSION.

mat'l code		SEE NOTE 2		tolerances unless otherwise specified		CUSTOMER		FCI		www.fciconnect.com	
ltr	ecn no.	dr	date	linear	.XX±.01/0.X±0.3	COPY					
C				projection	.XXX±.005/0.XX±0.13	title		2P + 16S + 2P			
				angles	.XXX±.0020/0.XXX±0.051	RIGHT ANGLE SOLDER HEADER					
				dr	0°±2°	INCH/MM		product family		PwrBlade	code
				enr	LH 06/24/05	scale		size		dwg no	213
				chr	LH 06/24/05	1:1		A		51730-112	sheet
				appd	VICTOR LIN 06/24/05						4 of 4
					JOSEPH HSIA 06/24/05						
sheet index	revision sheet										

cage code 22526

Pro/E