

DRAWING MADE IN THIRD ANGLE PROJECTION

© COPYRIGHT 1980, 81, 82 BY AMP INCORPORATED, HARRISBURG, PA. ALL INTERNATIONAL RIGHTS RESERVED. AMP INCORPORATED PRODUCTS COVERED BY U. S. AND FOREIGN PATENTS AND/OR PATENTS PENDING.

LOC GP 00 DIST 00

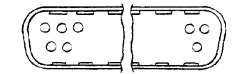
REVISIONS				DATE	APPROVED
P	F	ZONE	LTR		
		A		REVISED PER EC 0513-0023-03	14MAY80 JG

OBSOLETE ~~745036-1~~
745036-2

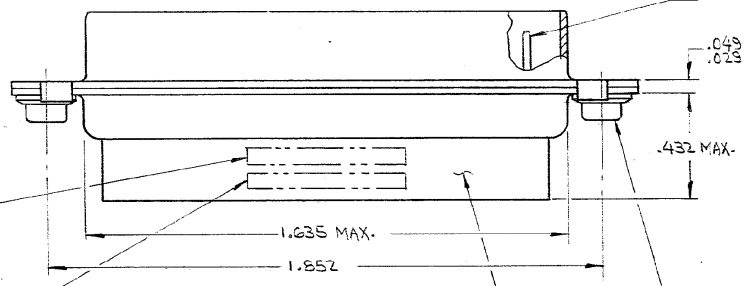
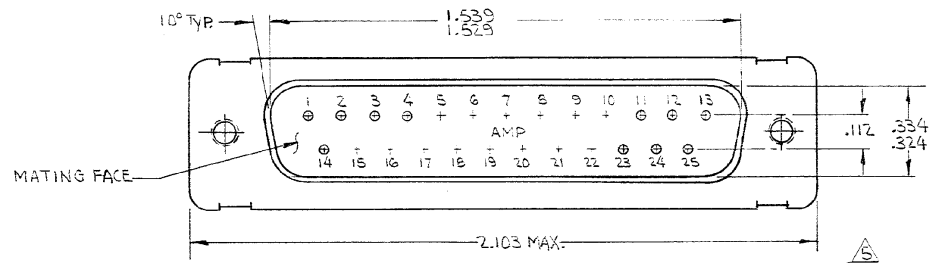
- AS SHOWN
- SAME AS -1 EXCEPT:
2. PLUG FRONT HAS GROUNDING INDENTS AS SHOWN IN DETAIL
- SHELL FINISH IS $0.002-0.004$ TYP BRIGHT TAN OVER BRIGHT NICKEL FLASH

OBSOLETE ~~745036-3~~

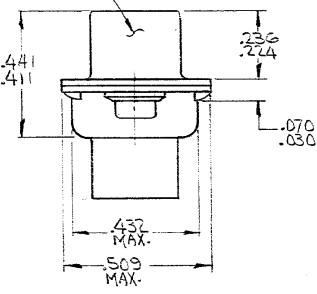
- SAME AS -2 EXCEPT:
2. PLUG FRONT SHELL DOES NOT HAVE GROUNDING INDENTS



GROUNDING INDENTS
(-2 ONLY)



SHELL: STEEL, ZINC PLATED PER QQ-Z-325, TYPE II, CLASS 3, YELLOW CHROMATE.



"AMP" DATE CODE INK STAMPED ON FAR SIDE

AMP PART No. INK STAMPED ON FAR SIDE.

INSERT: GLASS FILLED BLACK NYLON, (SELF EXTINGUISHING)

#4-40 STEEL CLINCH NUT, 2 PLACES.

- THIS PLUG WILL MATE WITH ANY SIZE 3, 25 POS. RECEPTACLE IN AMPLIMITE SERIES & CONFORMS TO AMP SPEC 108-10.020.
 - THIS PLUG ACCEPTS SIZE 20 PIN CONTACTS. RETENTION TINES ARE AN INTEGRAL PART OF INSERT.
 - WIRE INSULATION SIZE OF .068 DIA. MAX. IS RECOMMENDED FOR USE WITH THIS PLUG.
 - AMP TOOL No. 91067-2 IS RECOMMENDED FOR INSERTION / REMOVAL OF CONTACTS.
- CONTACTS ARE SHOWN FOR ILLUSTRATION ONLY, NOT PART OF CONNECTOR PACKAGE, MUST BE ORDERED SEPARATELY.

UNLESS OTHERWISE SPECIFIED DIMENSIONS ARE IN INCHES.		CONTRACT NO		PART NO	
TOLERANCES ON: DECIMALS ±.005 ANGLES ±.2°		DR <i>[Signature]</i> 11/7/80		AMP INCORPORATED Harrisburg, Pa.	
MATERIAL SEE CALLOUT		CHKD <i>[Signature]</i> 11780		NAME PLUG, SIZE 3, 25 POSITION; AMPLIMITE HDP/20 SERIES (W/ 4-40 CLINCH NUTS)	
FINISH SEE CALLOUT		APPRD <i>[Signature]</i> 1-17-80		SIZE CODE IDENT NO DRAWING NO C 00779 745036	
		DSGN APPD		SCALE <i>[Signature]</i> SHEET	
		OTHER APPD			