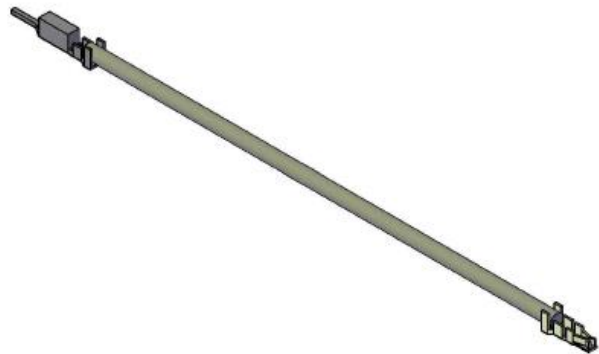
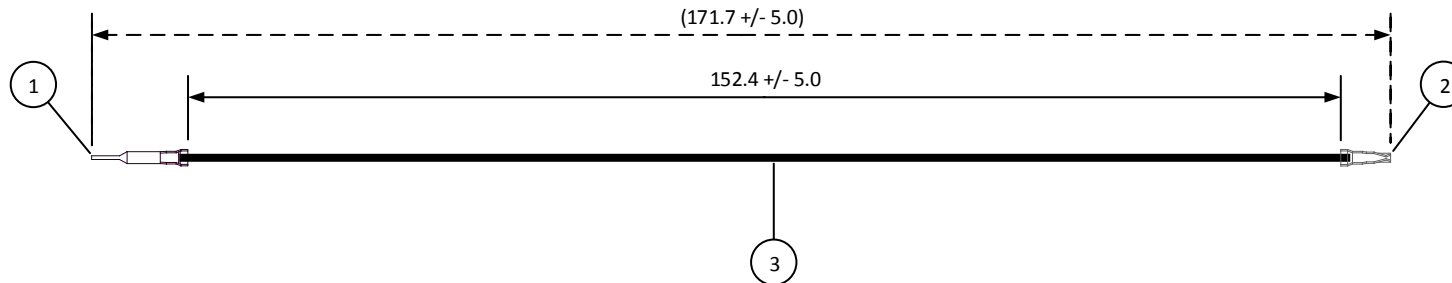


4		3		2		1	
ITEM	CONNECTOR PART NO.	DESCRIPTION	IPI CHECK	EOR CHECK	Applicable Tooling		
1	SPAL-001T-P0.5	PAL CONNECTOR MALE CONTACT			APPLICATOR		
2	SPHD-001T-P0.5	PA CONNECTOR FEMALE CONTACT			<b>Applicable Housings</b>		
3	UL1061, 22 AWG	BLACK					

NO. OF CIRCUITS	HOUSING PART NO. FOR PA CONTACT	HOUSING PART NO. WITH PANEL LOCKS FOR PAL CONTACT	HOUSING PART NO. WITHOUT PANEL LOCKS FOR PAL CONTACT
2	PAP-02V-S	PALR-02V	PALR-02VF
3	PAP-03V-S	PALR-03V	PALR-03VF
4	PAP-04V-S	PALR-04V	PALR-04VF
5	PAP-05V-S	-	PALR-05VF
6	PAP-06V-S	PALR-06V	PALR-06VF
7	PAP-07V-S	PALR-07V	PALR-07VF
8	PAP-08V-S	PALR-08V	PALR-08VF



**JST**

SCALE	CUSTOMER NAME	CUSTOMER PART NO.
1:1		
DIMENSIONS	DESCRIPTION	
All dimensions are in MM with a tolerance of +/- 3.0 unless otherwise specified.	2.0 mm Pitch PAL to PA Series Standard Leads - 6" Inside Length DOUBLE-END LEADS, M-F	
DRAWN BY	ASSEMBLY PART NO.	
STEVEN PILKINGTON	APALPA22K152	
CHECKED BY	DRAWING NO. & REVISION	REVISED
JUSTIN BAKER	GAM-068	3/8/2016

REV.	DESCRIPTION	DATE	BY
------	-------------	------	----

4

3

2

1