

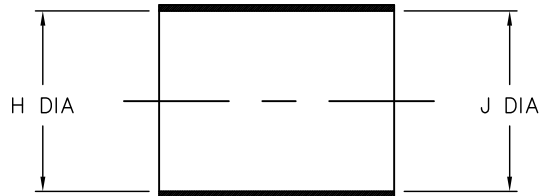
4

3

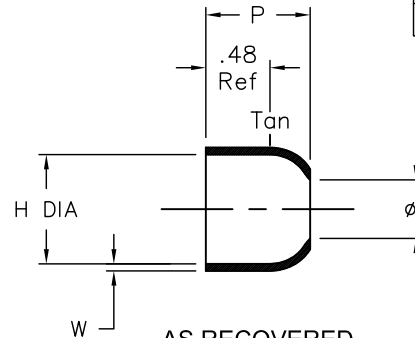
2

1

REVISIONS		
LTR	DESCRIPTION	DATE
A	INITIAL RELEASE OF DWG PER ECO-10-025273	12/09/2010



AS EXPANDED



AS RECOVERED

NOTES:

- PART IS TO BE MADE FROM 202A132.
- DIMENSION APPEARING IN TABLE ARE AS FOLLOWS:
a - AS SUPPLIED
b - AFTER UNRESTRICTED RECOVERY
- COATING (ADHESIVE) IS OPTIONAL. AS SUPPLIED DIMENSIONS APPEARING IN TABLE ARE FOR UNCOATED PARTS. WHEN COATING IS ADDED, ENTRY DIAMETER WILL BE REDUCED BY .06 MAX.

ORDERING INFORMATION: 202A132 -XX -20 /XX -0

BASE PART NUMBER

MATERIAL DASH NUMBER
(See Compatibility Chart)

MODIFICATION NUMBER

ADHESIVE SLASH NUMBER
(See Compatibility Chart)

COLOR DESIGNATOR

TABLE OF DIMENSIONS

PART DESCRIPTION	H		J		P	W
	MIN a	MAX b	±10% a	±10% b	±10% b	±20% b
202A132-12-20	.70 [17,8]	.56 [14,2]	.70 [17,8]	.30 [7,6]	.78 [19,8]	.07 [1,78]

CUSTOMER DRAWING

UNLESS OTHERWISE SPECIFIED
DIMENSIONS ARE INCHES. METRIC
DIMENSIONS ARE IN BRACKETS.

DECIMAL TOLERANCES

.XXX ± 0.005	[0.13 mm]
.XX ± 0.01	[0.25 mm]
.X ± 0.1	[0.50 mm]

ANGLE TOLERANCE

.X ± 1 DEG.

TYCO ELECTRONICS RESERVES THE RIGHT TO
AMEND THIS DRAWING AT ANY TIME. USERS
SHOULD EVALUATE THE SUITABILITY OF THE
PRODUCT FOR THEIR APPLICATION.

© 2009 Tyco Electronics Corporation. All rights reserved.

DRAWN

G.Rositano
12/03/10

APPROVED

D.Hurrell
12/08/10THIRD ANGLE
PROJECTION

Tyco Electronics

Raychem Molded Parts
305 Constitution Dr
Menlo Park, CA 94025

TITLE

BOOT, STRAIGHT

SIZE
BCODE IDENT. NO.
06090

DWG. NO.

202A132-XX-20

DO NOT SCALE THIS DRAWING

SHEET 1 OF 1

If this document is printed it becomes uncontrolled. Check for the latest revision

COMPATIBILITY CHART

MATERIAL DASH No.	MATERIAL DESCRIPTION	MATERIAL SPEC	ADHESIVE COATING SLASH No.	ADHESIVE COATING "S" No.
-12	FLUROELASTOMER, FLEXIBLE	RT-1312	N/A	N/A

D

D

C

C

B

B

B

B

A

A

3

2

1