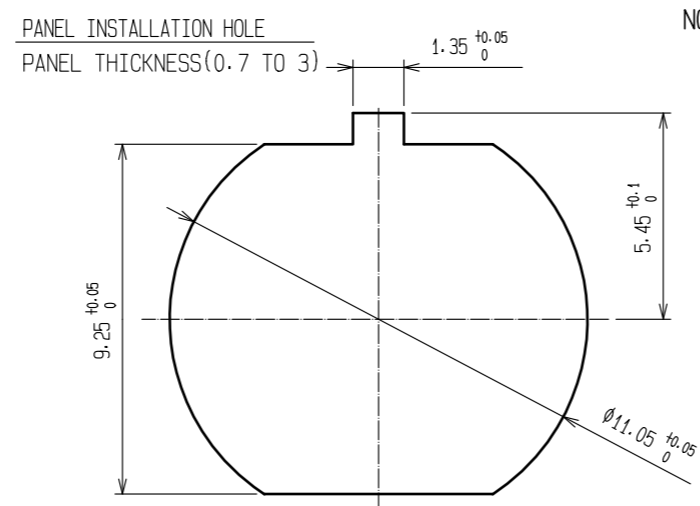
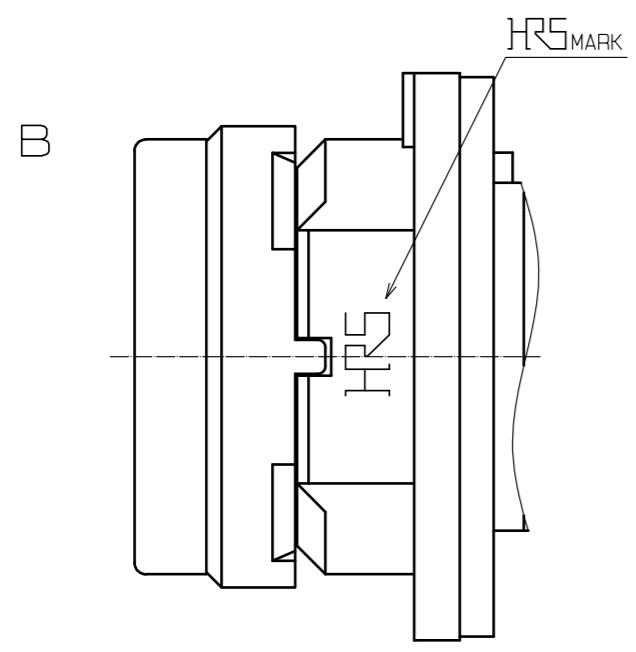
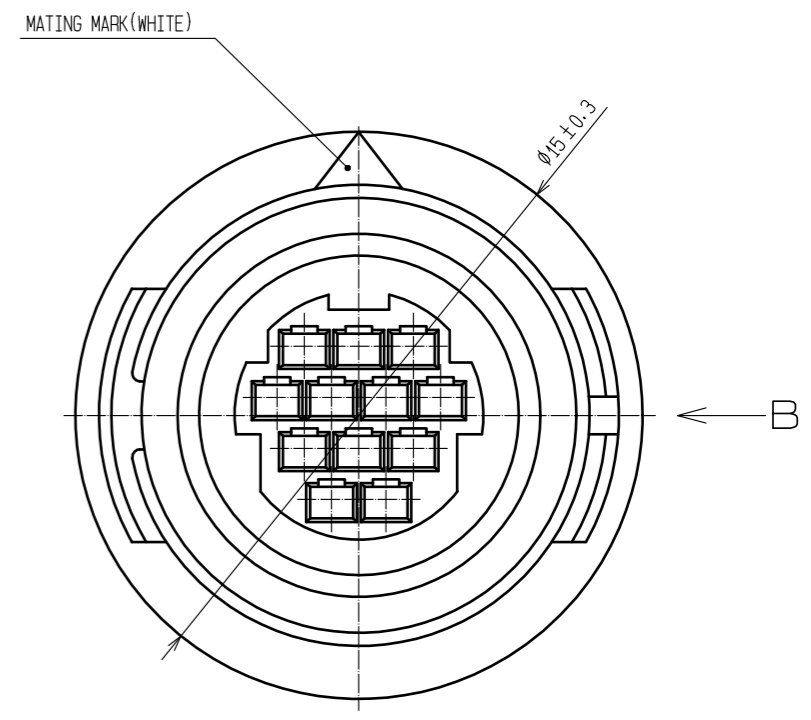
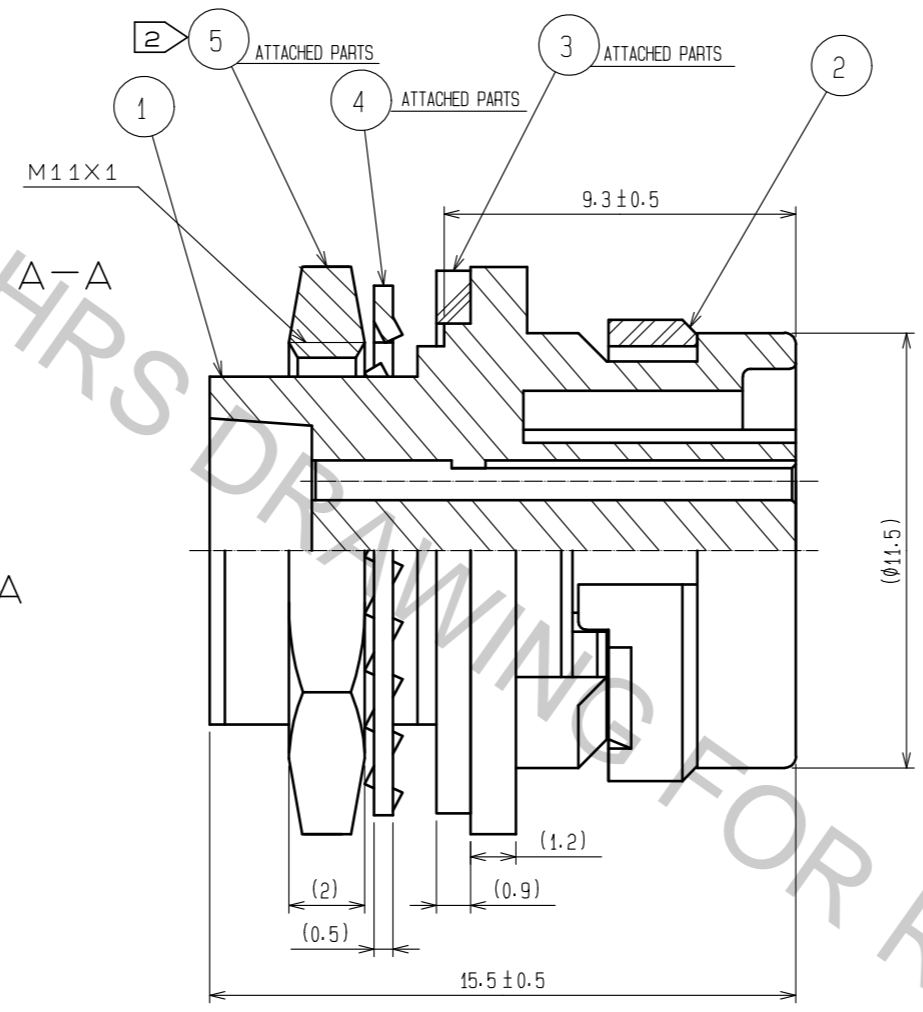
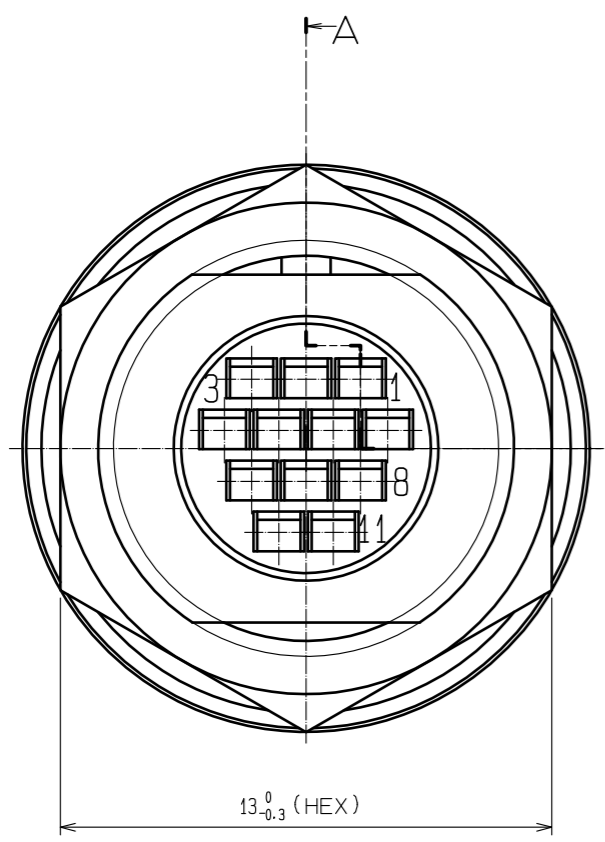


Aug.1.2018 Copyright 2018 HIROSE ELECTRIC CO., LTD. All Rights Reserved.
 In case that the application demands a high level of reliability, such as automotive,
 please contact a company representative for further information.



NOTES 1 APPLICABLE CRIMPING CONTACT:HR30-SC-211
 (APPLICABLE WIRE:26 TO 30 AWG WIRE JACKET DIAMETER:Ø1 MAX)
 APPLICABLE CONTACT WITHDRAWAL TOOL:HP30-TP
 2 THE RECOMMENDED CLUMP TORQUE OF REF. NO.5 TO BE 0.8N·m.
 LOCTITE 263, LOCPRIMER 7649, HENKEL JAPAN IS RECOMMENDED TO PREVENT REF. NO.5 FROM LOOSENING.

NO.	MATERIAL	FINISH .	REMARKS	NO.	MATERIAL	FINISH .	REMARKS
3	SYNTHETIC RUBBER	(BLACK)					
2	PPS	(BLACK)	UL94V-0	5	BRASS	NICKEL PLATING	
1	PPS	(BLACK)	UL94V-0	4	PHOSPHOR BRONZE	NICKEL PLATING	

UNITS	SCALE	COUNT	DESCRIPTION OF REVISIONS	DESIGNED	CHECKED	DATE
mm	5 : 1	1				
APPROVED : HY. KOBAYASHI			18.02.26	DRAWING NO. EDC-112398-31-00		
CHECKED : HY. KOBAYASHI			18.02.26	PART NO. HR30-8R-12SC(31)		
DESIGNED : DS. MATSUNE			18.02.26	CODE NO. CL130-1014-0-31		
DRAWN : DS. MATSUNE			18.02.26	1/1		