

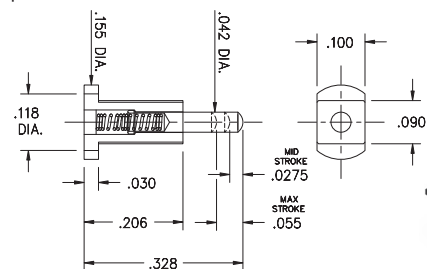
# SPRING-LOADED PINS

## DISCRETE SPRING-LOADED CONTACTS

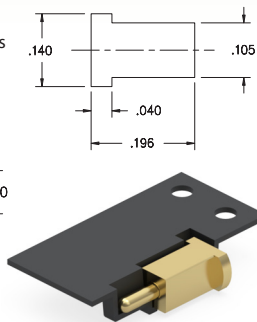
### 0967

0967-0-15-20-75-14-11-0

Standard stroke, Horizontal surface mount  
Also available on 16mm wide carrier tape: 2,200 parts per 13" reel. Order as: 0967-0-58-20-75-14-11-0



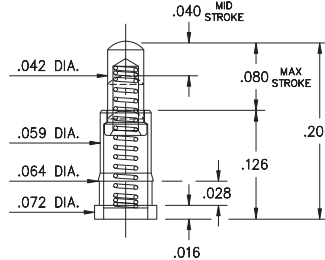
### P.C.B. Layout



### 0964

0964-0-15-20-85-14-11-0

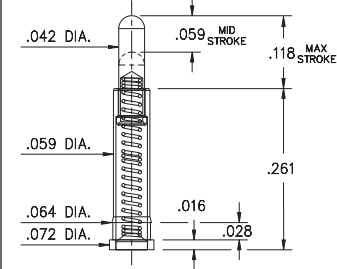
Long stroke, Surface mount, Mid profile  
\*Stainless steel spring



### 0919

0919-0-15-20-89-14-11-0

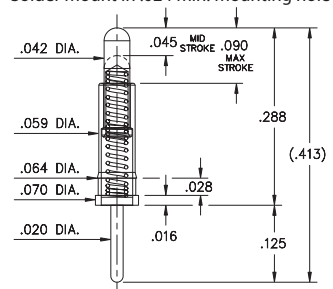
3mm (.118") Long stroke, Surface mount  
\*Stainless steel spring



### 7913

7913-0-15-20-77-14-11-0

Long stroke  
Solder mount in .024 min. mounting hole



#### Material Specifications:

**Sleeve & Plunger Material:** Copper Alloy  
**Spring Material:** BeCu or Stainless Steel 302 \*  
**Sleeve & Plunger Finish:** 20 μ" Gold over Nickel  
**Spring Finish:** 10 μ" Gold over Nickel  
**Dimensions: Inches**  
**Tolerances On:** Lengths: ± .006  
Diameters: ± .002  
Angles: ± 2°



#### Mechanical & Electrical Specifications:

**Durability:** 1,000,000 cycles  
**Current Rating:** 2A continuous, 3A peak  
**Contact Resistance:** 20 mΩ max.  
**Environmental Specifications:**  
**Operating temperature range:** -55/+125° C

**75, 77, 85, 89 Springs are not interchangeable**

Order Code: X9XX - X - 15 - 20 - XX - 14 - 11 - 0

Spring Number

Spring Number	Mid. Stroke	Max. Stroke	Force @ Mid. Stroke	Initial Force (Pre-Load)
75	.0275	.055	60 g	25 g
77	.045	.090	60 g	25 g
85	.040	.080	60 g	25 g
89	.059	.118	85 g	25 g

