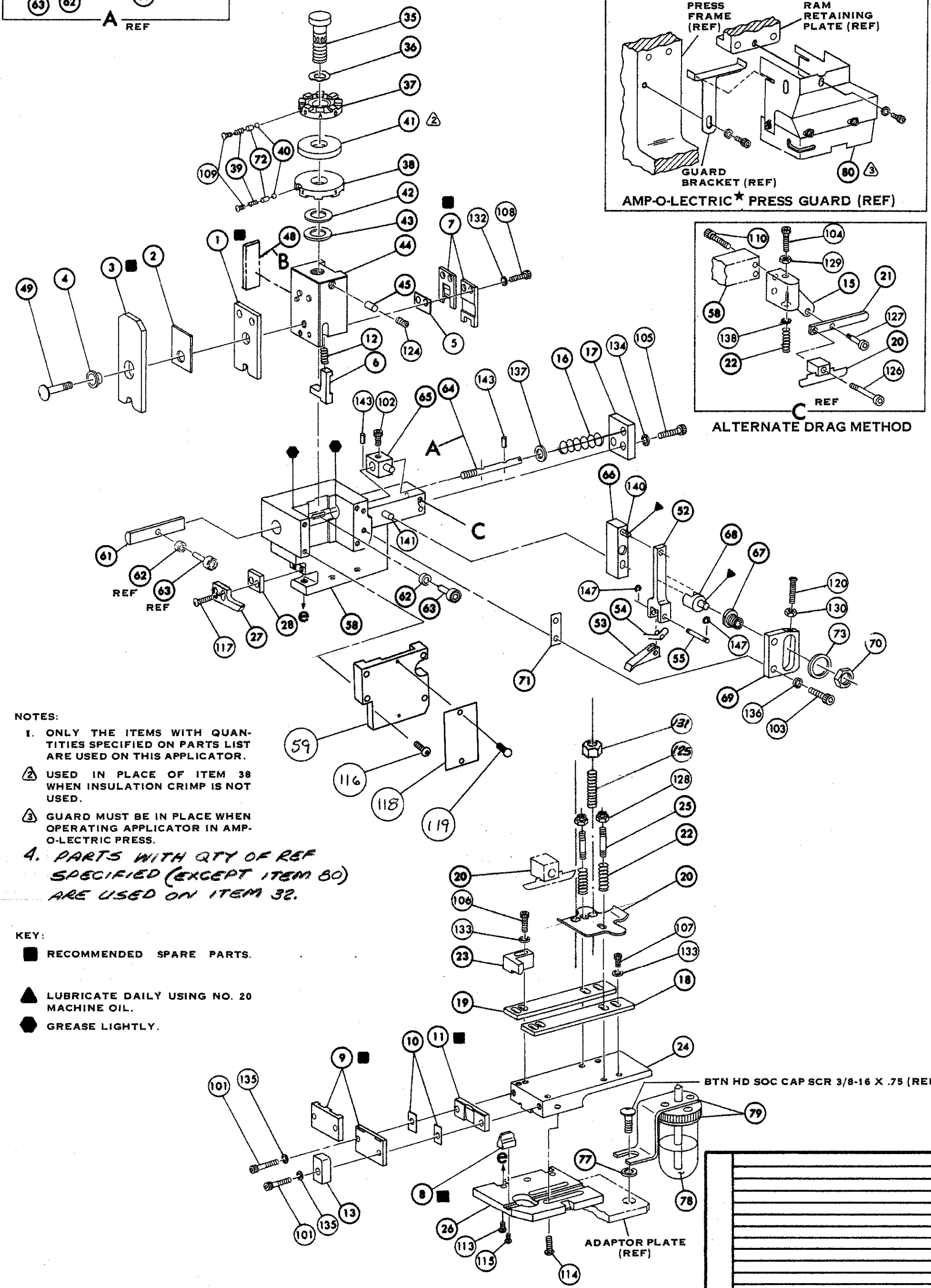
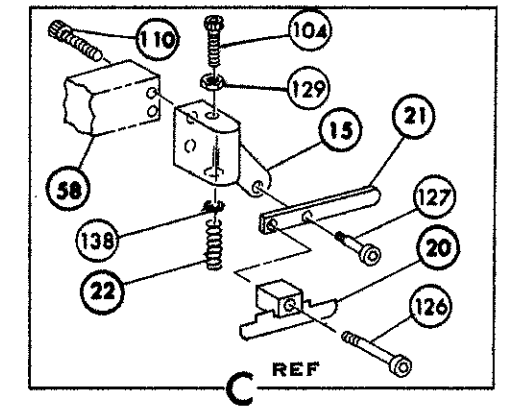
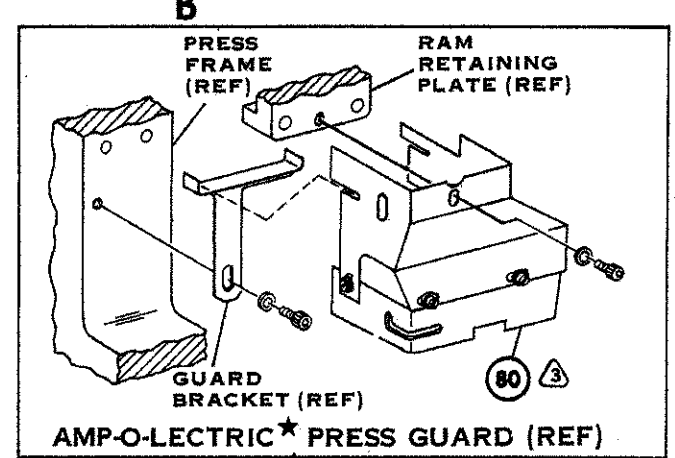
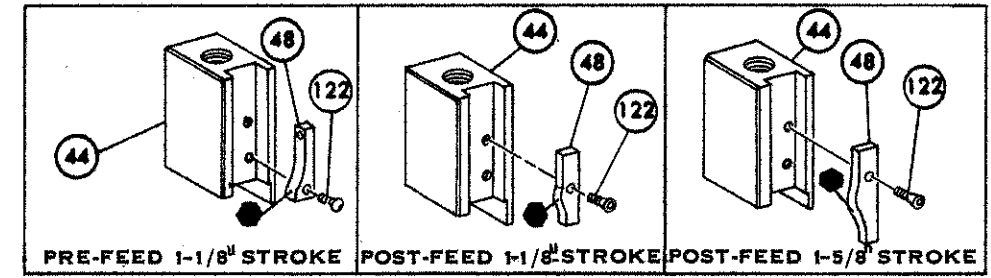
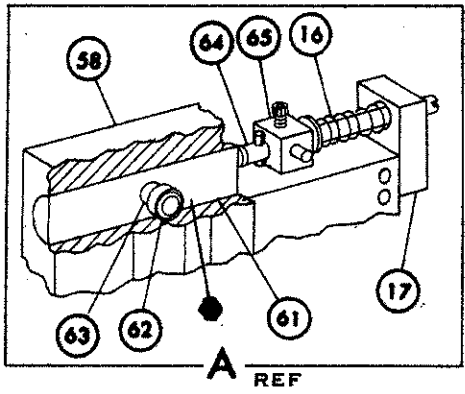


THIS IS A CONTROLLED DOCUMENT.

887942-2



NOTES:  
 1. ONLY THE ITEMS WITH QUANTITIES SPECIFIED ON PARTS LIST ARE USED ON THIS APPLICATOR.  
 2. USED IN PLACE OF ITEM 38 WHEN INSULATION CRIMP IS NOT USED.  
 3. GUARD MUST BE IN PLACE WHEN OPERATING APPLICATOR IN AMP-O-LECTRIC PRESS.  
 4. PARTS WITH QTY OF REF SPECIFIED (EXCEPT ITEM 80) ARE USED ON ITEM 32.

KEY:  
 ■ RECOMMENDED SPARE PARTS.  
 ▲ LUBRICATE DAILY USING NO. 20 MACHINE OIL.  
 ● GREASE LIGHTLY.

ECN	DATE	DESCRIPTION	BY	CHK
E	01/20/04	REV PER ECN 1-1378-04		
D	01/24/04	REV PER ECN 0124-0342-03		
C	01/24/04	REV PER ECN AIGOG88		
B	01/24/04	REV PER ECN R-5525		
A	01/24/04	REV ITEM 37		

REF	PART NO.	DESCRIPTION	NO.	REQ.	PART NO.	DESCRIPTION	NO.
162	REF	690517-1	SPACER				71
161		22594-8	HEX, NUT				70
160		240628-1	PLATE, ADJ				69
159		240626-1	SHAFT, PIVOT				68
158		240633-1	BUSHING				67
157		455680-1	LEVER, INTERMEDIATE				66
156		240629-1	BLOCK, PIVOT				65
155		240632-2	SCREW, ADJ				64
154		240659-3	PIN, CAM ROLLER				63
153		240658-1	CAM, ROLLER				62
152	REF	454398-1	ROD, FEED				61
151							60
150	REF	454220-1	CAP, RAM				59
149	REF	453736-1	HOUSING				58
148							57
147							56
146	REF	240624-1	PIN, FEED FINGER				55
145	REF	691999-1	SPRING, FEED FINGER				54
144	REF	240635-1	FINGER, FEED				53
143	REF	240634-1	LEVER, TERMINAL				52
142							51
141							50
REF	21045-3	RING, RETAINING 'C' (.187 DIA) FEED PIN					
140							49
REF	1- 21030-7	PIN, DOWEL (.187 DIA x 1.50) HOUSING					
REF	1- 21030-1	PIN, DOWEL (.187 DIA x .50) LEVER					
139							48
138							47
137							46
136							45
135							44
134							43
133							42
132							41
131							40
130							39
129							38
128							37
127							36
126							35
125							34
124							33
123							32
122							31
121							30
120							29
119							28
118							27
117							26
116							25
115							24
114							23
113							22
112							21
111							20
110							19
109							18
108							17
107							16
106							15
105							14
104							13
103							12
102							11
101							10
80							9
79							8
78							7
77							6
76							5
75							4
74							3
73							2
72							1
REF	458109-1	WASHER, FLAT (SPECIAL)					
1	690603-1	SPRING, ASSIST					

TERM APPL SPEC 114-2036

CRIMPING DATA				THIS APPLICATOR WILL APPLY
PAD LETTER	CRIMP HEIGHT	WIRE SIZE	WIRE STRIP LENGTH	42845
A	.070	#14	.237-.267	60021
B	.060	#16	.237-.267	
C	.054	#18	.237-.267	
D	NOT USED			
CRIMP SIZE	TYPE	FEED	PRESS REF.	
WIRE	.110	F	5654355	
INSULATION RANGE	WIRE RANGE	APPLICATOR INSTRUCTION		
	18-14	A 8039		
REMARKS AMP-O-LECTRIC POST FEED				
E.D. PLATE (REF): 461264-1				
SET UP GAGE	LAYOUT NO.	APPROVED	DATE	NO.
458638-1	51	10-11-73	10/11/73	687942-2
AMP INCORPORATED HARRISBURG, PENNA.				
MINIATURE QUICK CHANGE APPLICATOR END-FEED (.250 FAST IN FAST OUT)				