

NOTES: UNLESS OTHERWISE SPECIFIED.

1. MATERIAL & FINISH:

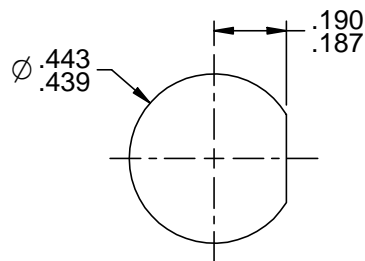
- 1.1 BODY & PANEL NUT: NICKEL PLATED BRASS
- 1.2 CENTER CONTACT AND INTERMEDIATE CONTACT: GOLD PLATED BERYLLIUM COPPER
- 1.3 DIELECTRIC: PTFE (TEFLON)
- 1.4 GASKET: SILICON RUBBER
- 1.5 GROUND LUG & LOCKWASHER: NICKEL PLATED COPPER ALLOY

2. ELECTRICAL

- 2.1 FREQUENCY (MAX): 500 MHZ
- 2.2 IMPEDENCE: NON-CONSTANT

3. PANEL NUT TORQUE (MAX): 35 INCH POUNDS

4. PANEL THICKNESS (MAX): .250



**RECOMMENDED  
PANEL CUTOUT**

<p>This PROPRIETARY Document is property of Cinch Connectivity Solutions. It is confidential in nature, non-transferable, and issued with the clear understanding that it is not traced or copied without permission and is returnable upon demand.</p> <p>INTERPRET DRAWING IN ACCORDANCE WITH ASME Y14.5-2009.</p>	<p>3RD ANGLE PROJECTION</p>	<p><b>Trompeter</b></p>	
	<p>RoHS <input checked="" type="checkbox"/></p> <p>2002/95/EC</p>	<p>Title: TRS BULKHEAD SOLDER POT JACK</p>	
<p>UNLESS OTHERWISE SPECIFIED UNITS: INCH</p> <p>.XX ±.02 .XXX ±.005 ANGLES ±2°</p>	<p>Model No. BJ150FL</p>		
<p>Size A</p>	<p>DO NOT SCALE DRAWING</p>	<p>Date: 5/9/2014</p>	<p>Sheet 1 of 1</p>